



# Toshiba Satellite L45-S7423 Wireless Card Replacement

This guide shows the user how to remove and install the wireless card for the Toshiba Satellite L45-S7423.

Written By: Stephen Sippel



## INTRODUCTION

The wireless card allows the user to wirelessly connect to the internet if Wifi is available. If you are experiencing trouble with your wireless connection, replacement of your wireless card may be necessary. Following the this guide will allow you to easily replace your wireless card.

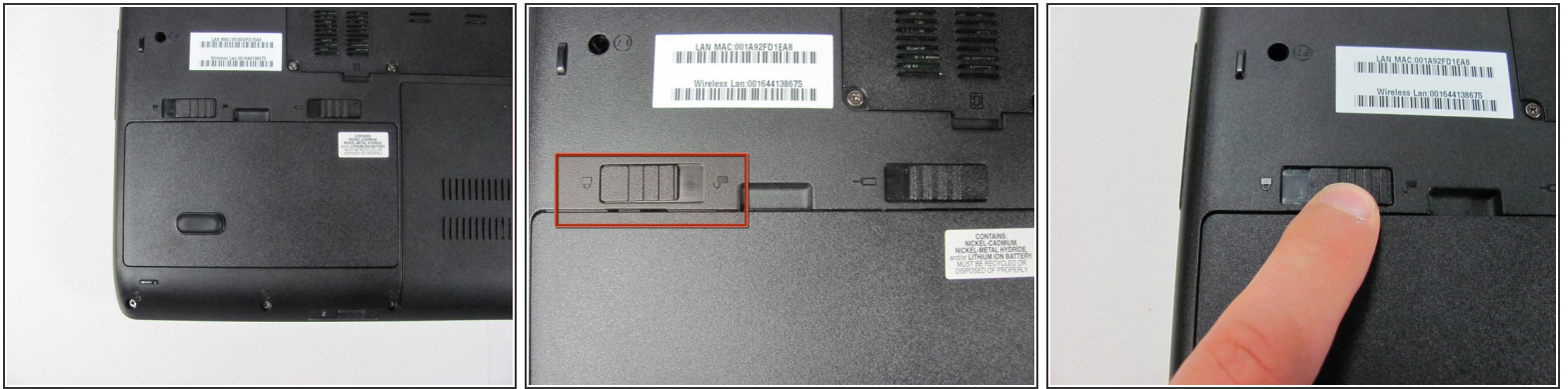


### TOOLS:

- [Phillips #00 Screwdriver](#) (1)
-

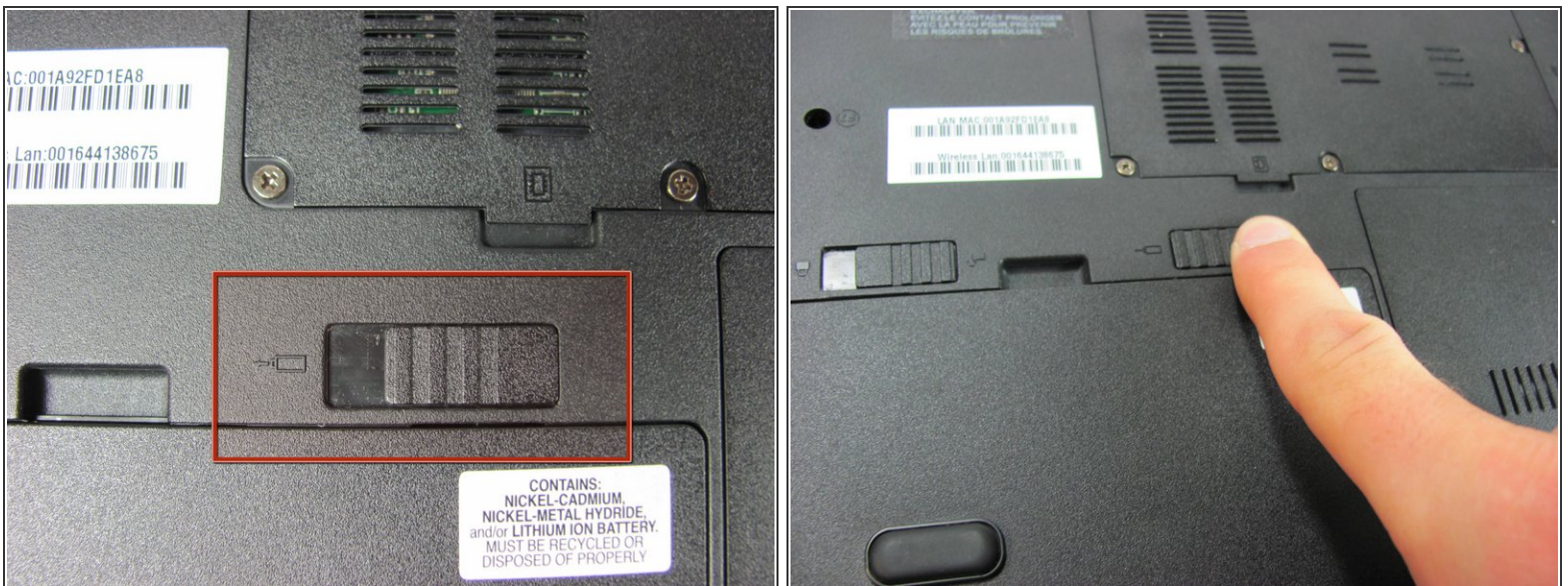


## Step 1 — Battery



- Make sure the battery lock switch is switched to the unlocked position.
- The battery is unlocked when the battery lock switch is slid to the side with an image of an unlocked lock.

## Step 2



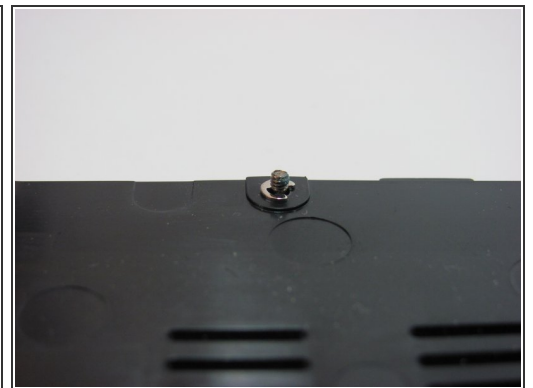
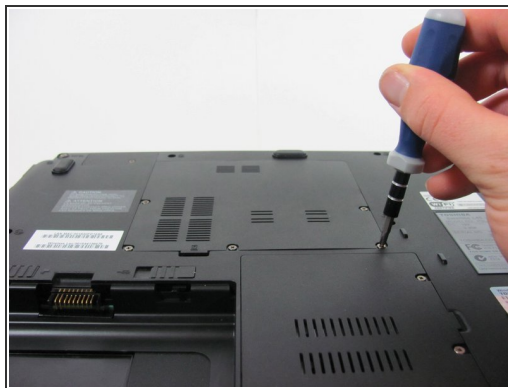
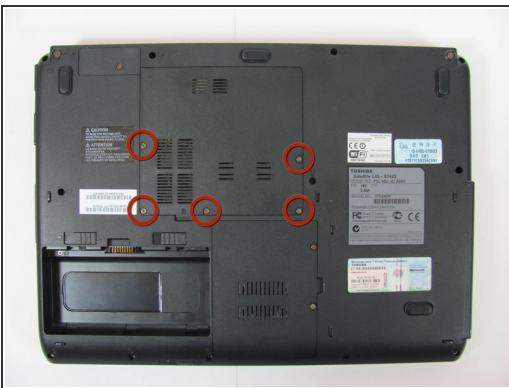
- Slide the battery release switch to the left.
- ⓘ The switch is spring loaded, so you must hold the switch in place while removing the battery.

### Step 3



- Using a finger, lift up the battery.
- ☑ The battery release switch must be held in place.

### Step 4 — Bottom Access Panel



- Remove the 5 Phillips screws holding the panel in place.
- ⓘ These screws are permanently fastened to the panel; they are designed to be removed only partially to avoid loss.

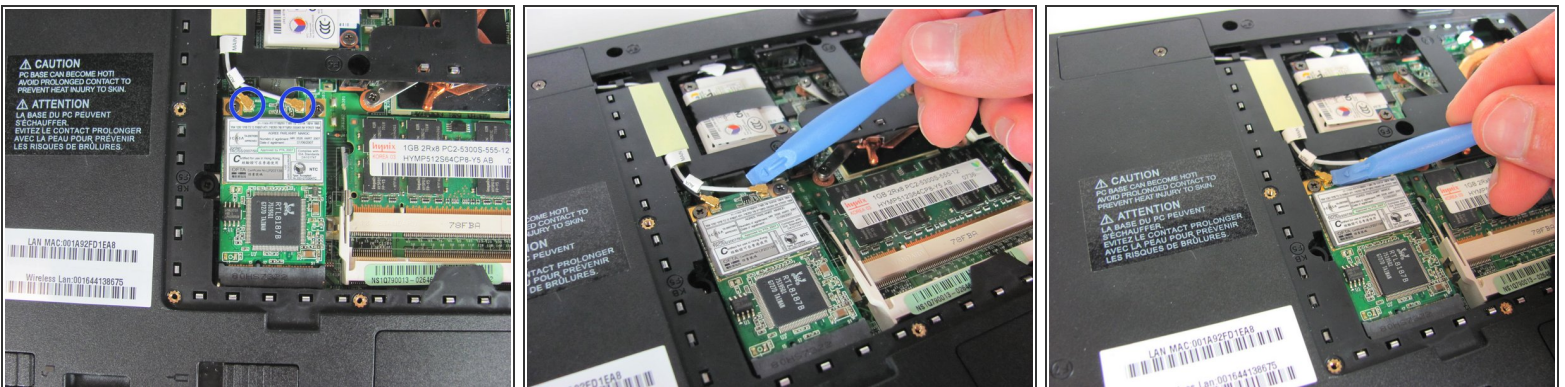


## Step 5



- Use a finger to remove the panel by lifting up on the provided removal tab.

## Step 6 — Wireless Card



- Remove the black and the white antenna wires attached to the wireless card.
- Using a plastic removal tool, gently pop the connections apart.

## Step 7



- Remove the screws holding the wireless card in place.
- Two 3.6 mm Phillips screws.

## Step 8



- The wireless card will automatically pop up allowing for easy removal.



## Step 9



- Pull to remove the wireless card.

To reassemble your device, follow these instructions in reverse order.