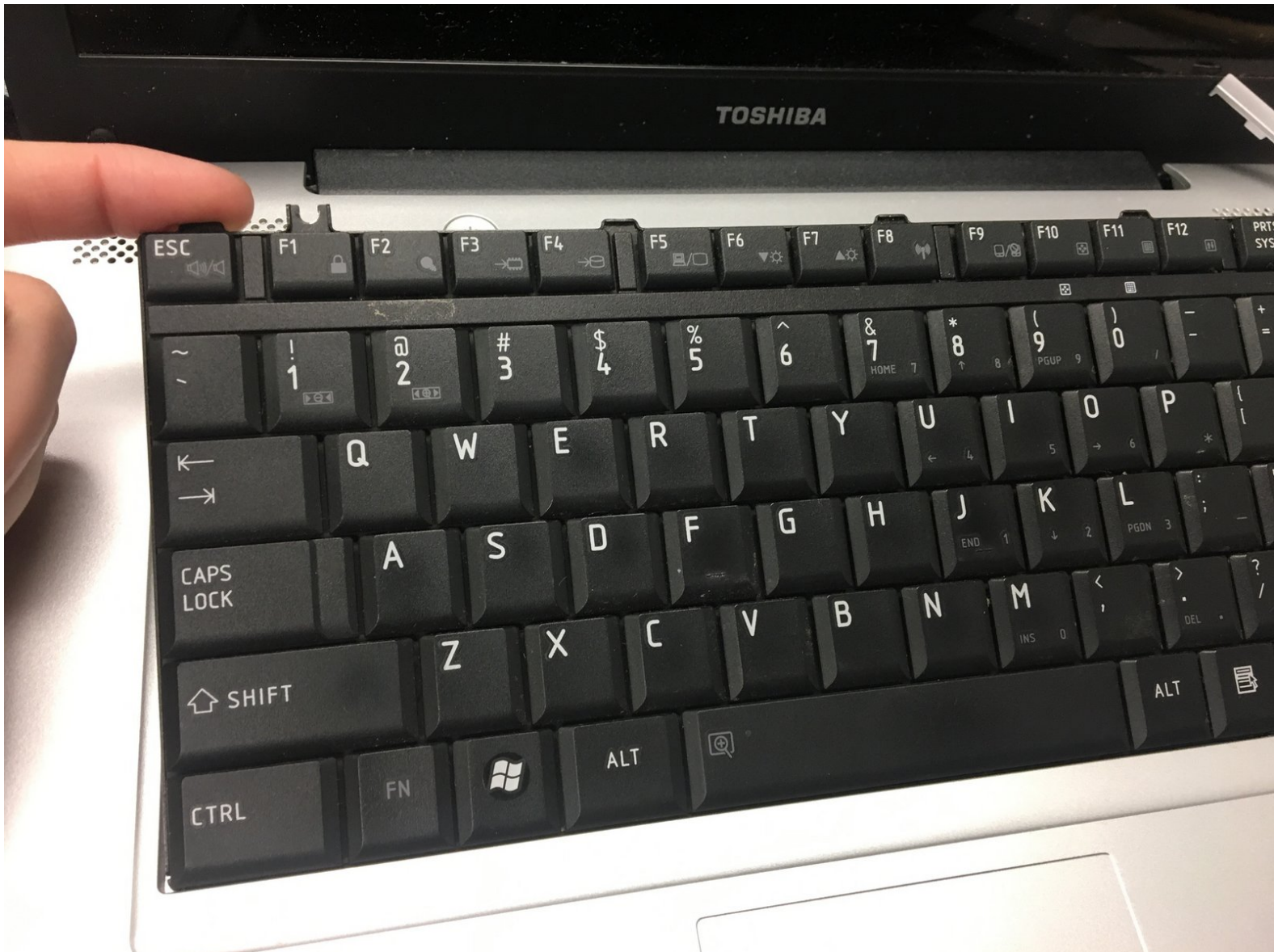




Toshiba Satellite L455-S5046 Keyboard Replacement

How to remove and then replace the keyboard for the Toshiba Satellite L455-S5046.

Written By: Daryl Spurgeon



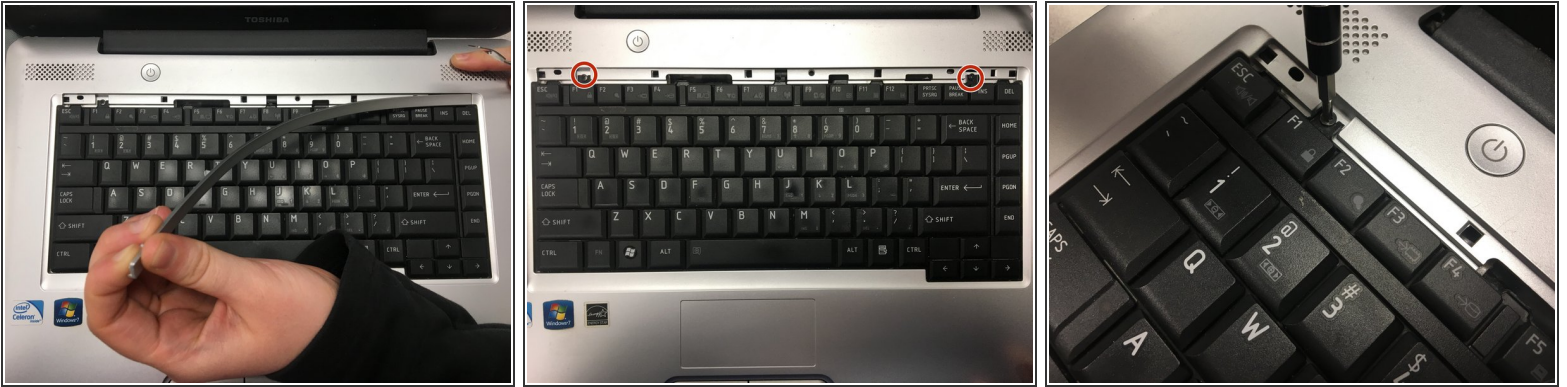
INTRODUCTION

In this guide we will teach you how to replace the keyboard of your laptop.

TOOLS:

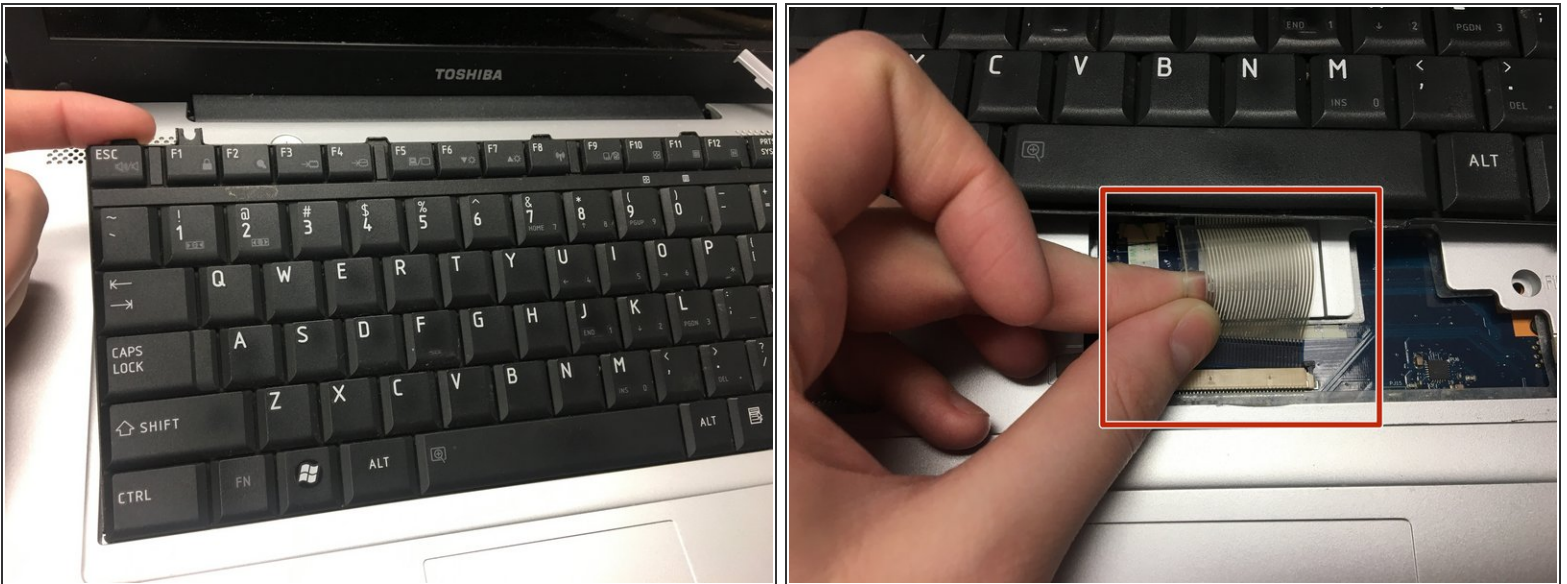
- [Phillips #0 Screwdriver](#) (1)
-

Step 1 — Keyboard



- Lift the plastic strip above the keyboard. If you use a lever to pick up the left edge it should pop off.
- Use the Phillips #0 screwdriver to remove the two indicated 5-mm screws.

Step 2



- Remove the keyboard slowly. It will be attached to the laptop by a plastic connector, which can be disconnected from the laptop by pulling gently.

To reassemble your device, follow these instructions in reverse order.