



Toshiba Satellite L455-S5975 Keyboard Replacement

Learn how to remove and replace your Toshiba Satellite L455-S5975 keyboard.

Written By: Mike Kennedy



INTRODUCTION

This guide is useful for replacing a broken keyboard on your Toshiba Satellite L455-S5975. In this replacement guide, you will remove the old keyboard and install the new one.

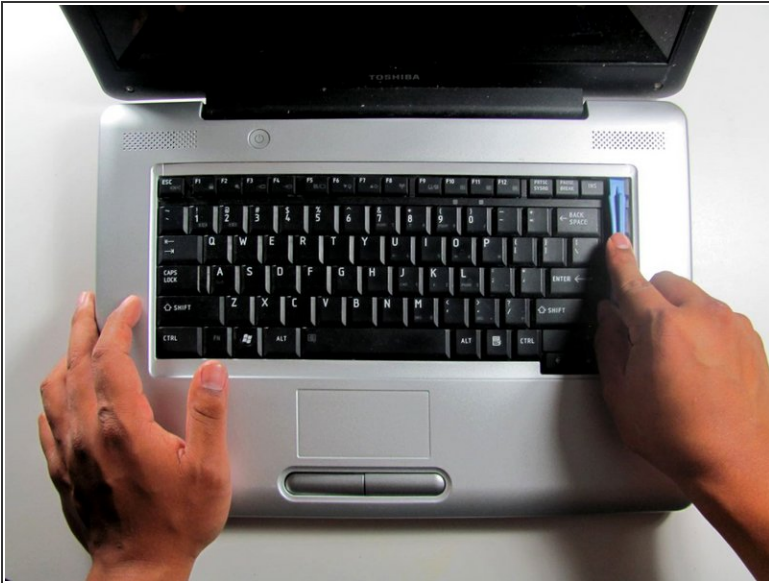
Note: Before starting any removal or installation, remember to turn off the device and to remove it from the power source.



TOOLS:

- [iFixit Opening Tools](#) (1)
 - [Phillips #00 Screwdriver](#) (1)
-

Step 1 — Keyboard



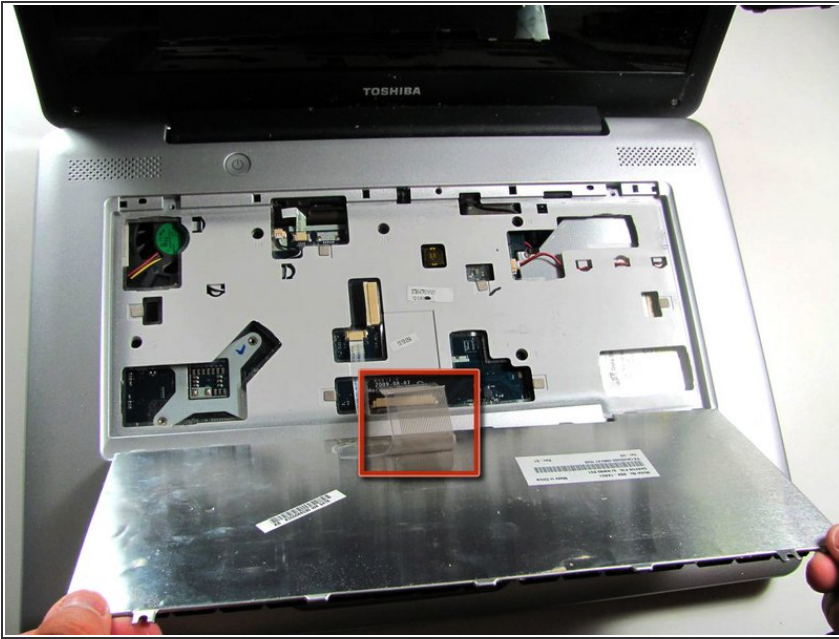
- ❗ Before repairing your laptop, power down the system, disconnect the charger if necessary and remove the battery.
- Use the flat edge of the plastic opening tool to pry open the narrow plastic strip above the keyboard.

Step 2



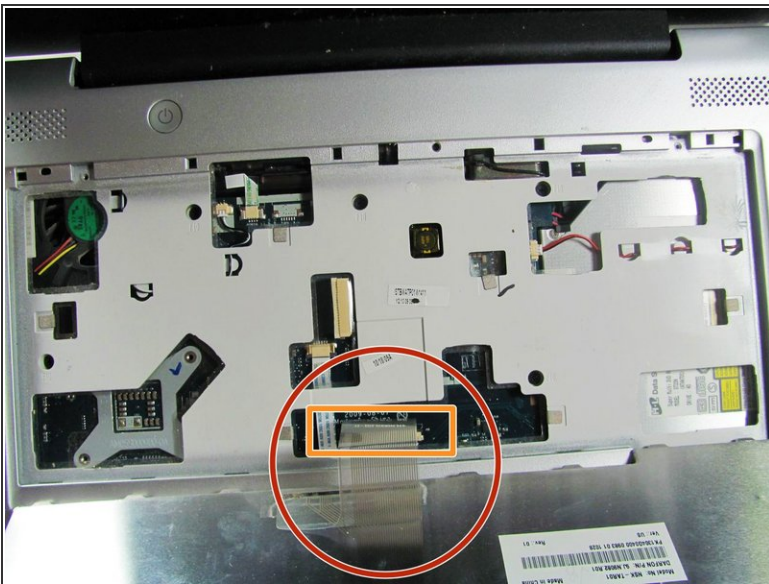
- Remove the three 3mm screws with a Phillips#00 Screwdriver.

Step 3



- Lift the keyboard away from the top side of the laptop.
- ⚠ Do not pull the keyboard away too hard. It is still connected by the fragile ribbon cable (shown in the red square).

Step 4



- Disconnect the keyboard cable that is still attached to the keyboard.
- Unlatch the fastener.
- Using your hands, pull the keyboard connector out, not up.

To reassemble your device, follow these instructions in reverse order.