



Toshiba Satellite L455-S5975 Logic Board Replacement

This guide will show you how to dive deep in to the laptop and remove the mother board.

Written By: Mike Kennedy



INTRODUCTION

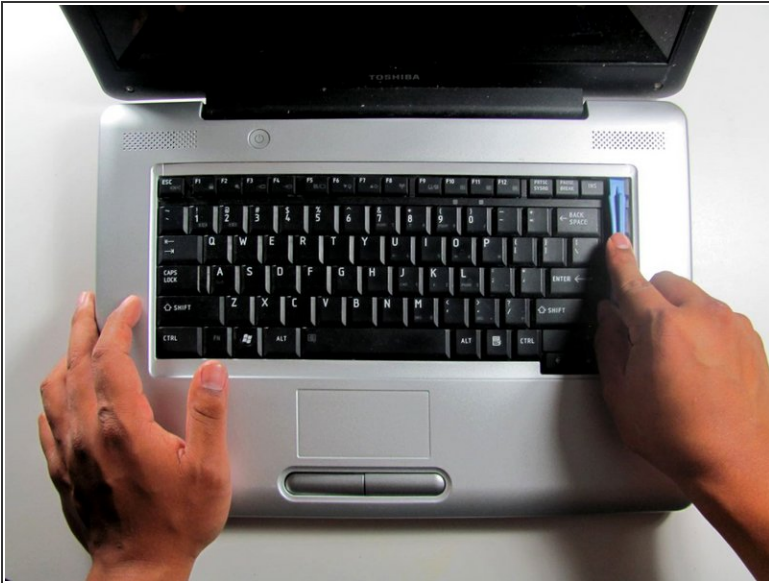
Before starting any removal or installation, remember to turn off the device and to remove it from the power source.



TOOLS:

- [Phillips #00 Screwdriver](#) (1)
 - [iFixit Opening Tools](#) (1)
-

Step 1 — Keyboard



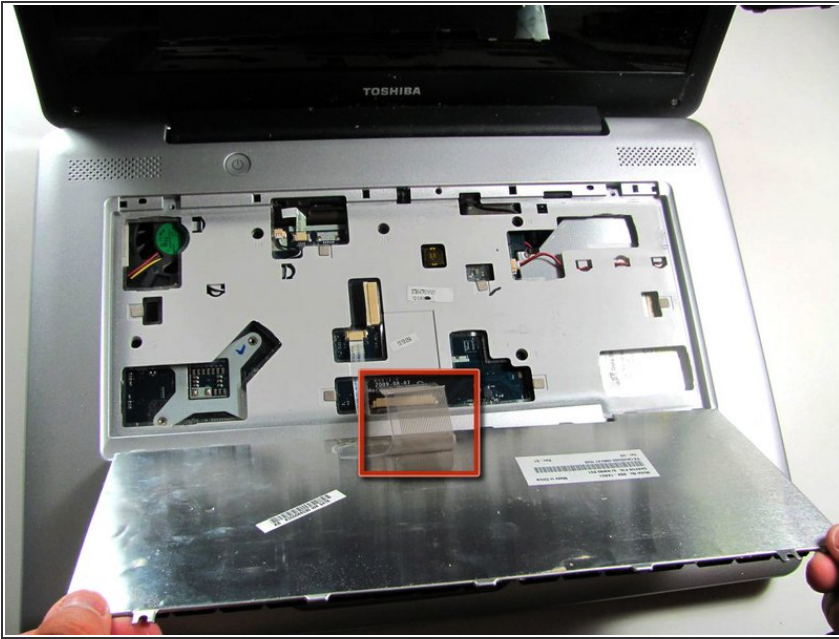
- ❗ Before repairing your laptop, power down the system, disconnect the charger if necessary and remove the battery.
- Use the flat edge of the plastic opening tool to pry open the narrow plastic strip above the keyboard.

Step 2



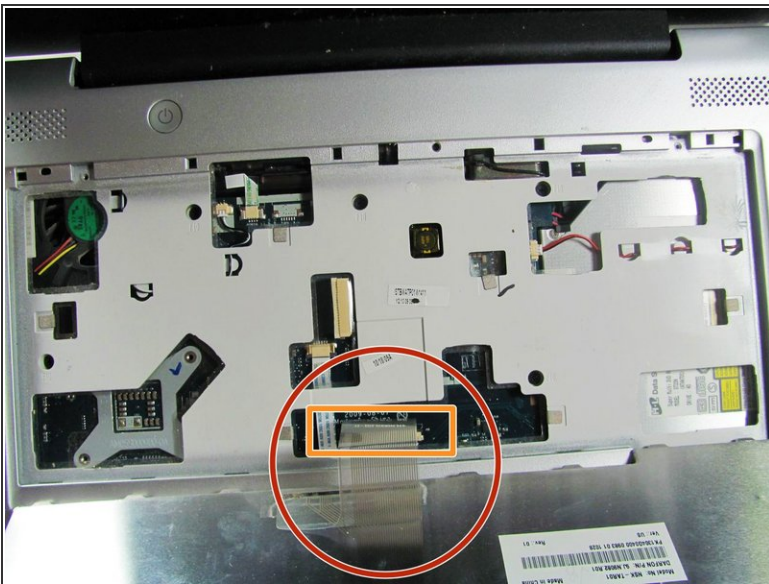
- Remove the three 3mm screws with a Phillips#00 Screwdriver.

Step 3



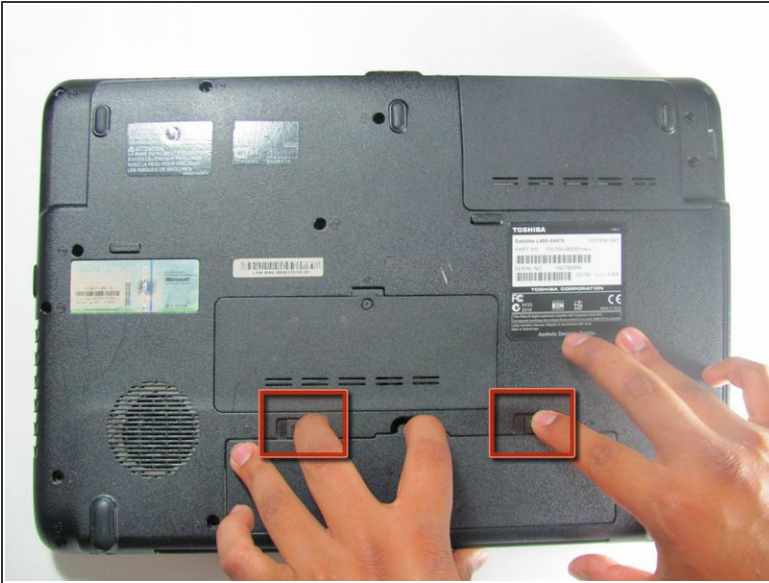
- Lift the keyboard away from the top side of the laptop.
- ⚠ Do not pull the keyboard away too hard. It is still connected by the fragile ribbon cable (shown in the red square).

Step 4



- Disconnect the keyboard cable that is still attached to the keyboard.
- Unlatch the fastener.
- Using your hands, pull the keyboard connector out, not up.

Step 5 — Fan



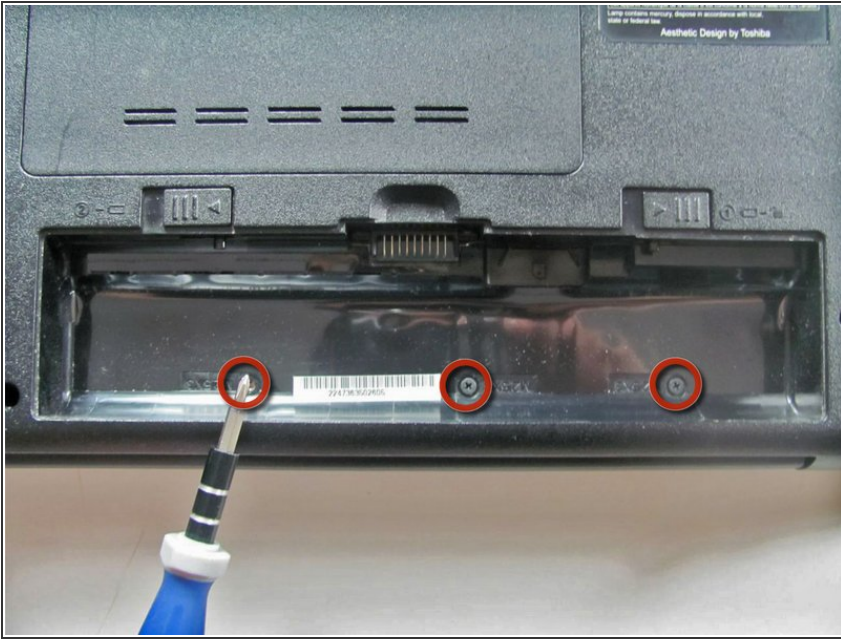
- Flip the laptop over to access the battery.
- Remove the battery by sliding fingers away from each other and lifting up the tab at the same time.

Step 6



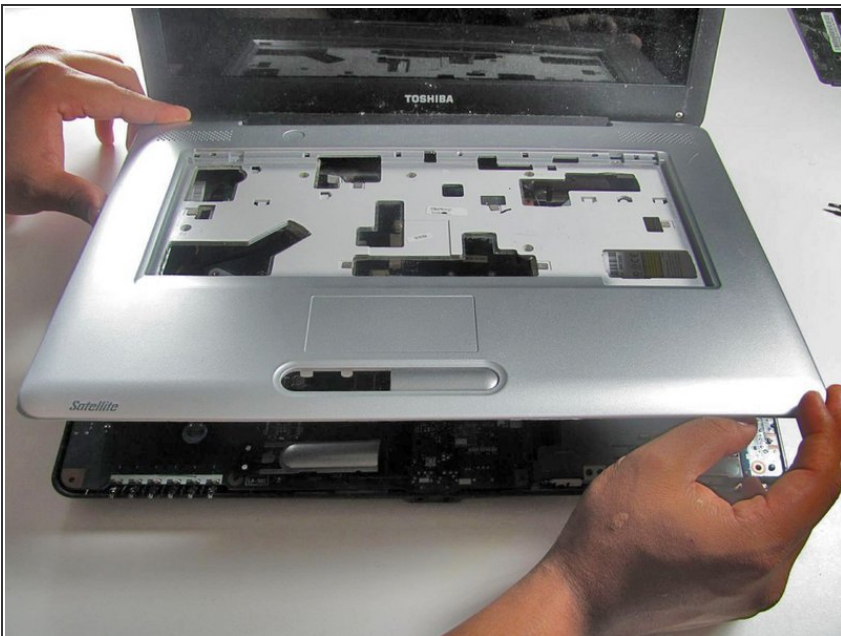
- Remove the twelve 10mm screws with a Phillips #00 screwdriver.
- Remove the cover over the hard drive (upper right in photo) and remove the four 10mm screws at the four corners.

Step 7



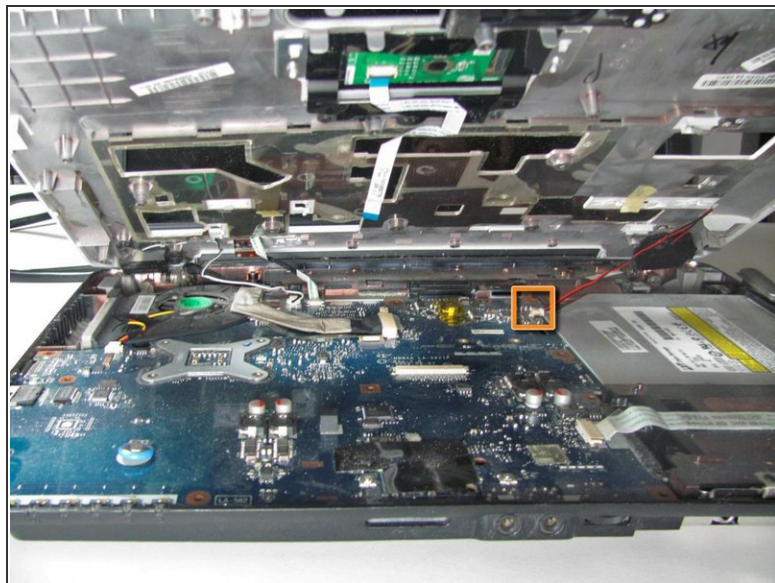
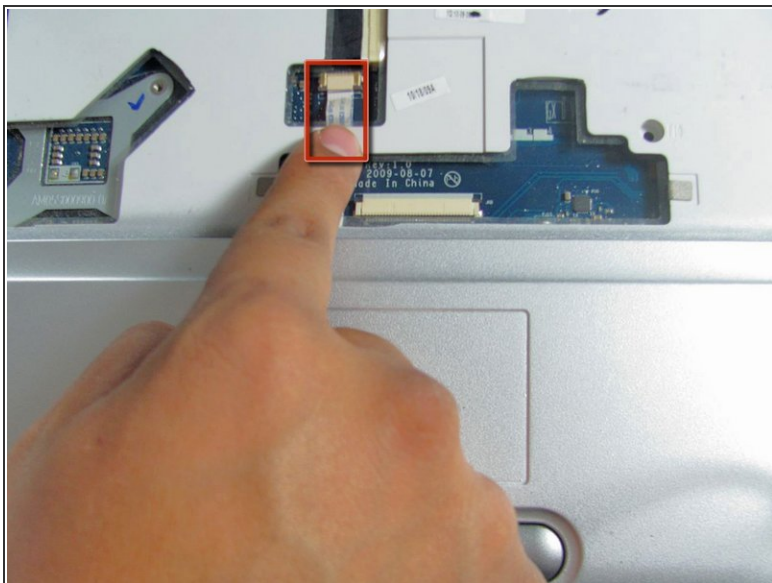
- Remove the three 4mm screws with a Phillips #00 screwdriver.

Step 8



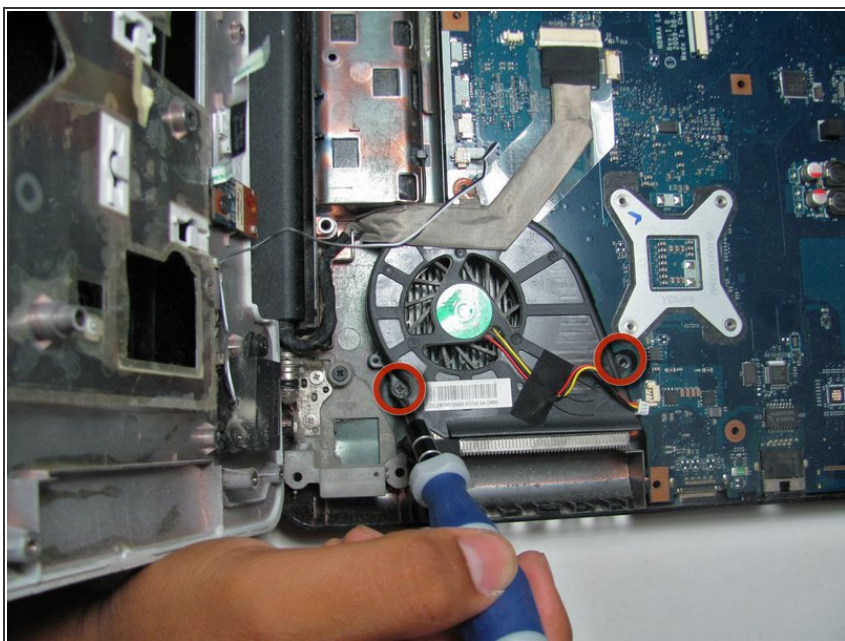
- Flip the laptop over so it's in the right-side-up position.
- Lift the grey plastic casing up and unhook any wires attached to the casing.
- Remove the five 10mm screws, each with a label 'F10' next to them.

Step 9



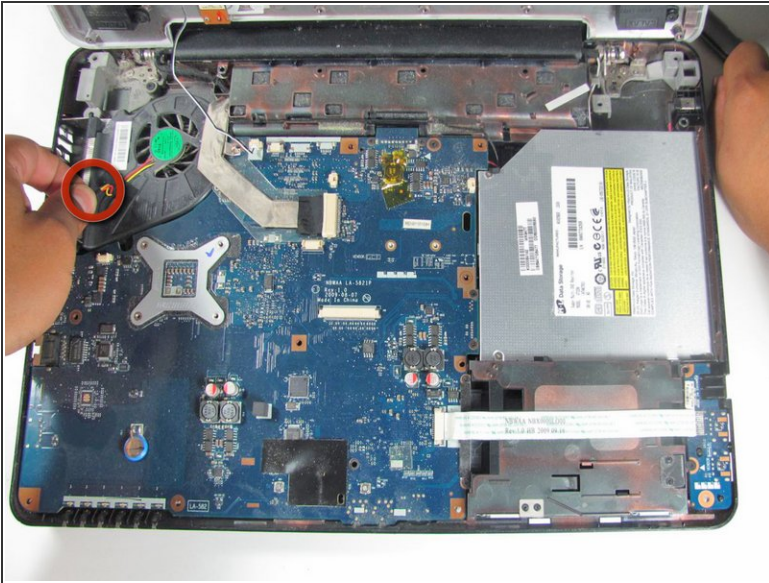
- Disconnect the flat thin wire connecting the track pad to the motherboard by pulling it straight out.
- Disconnect the thin red wire on the right side of the motherboard.

Step 10



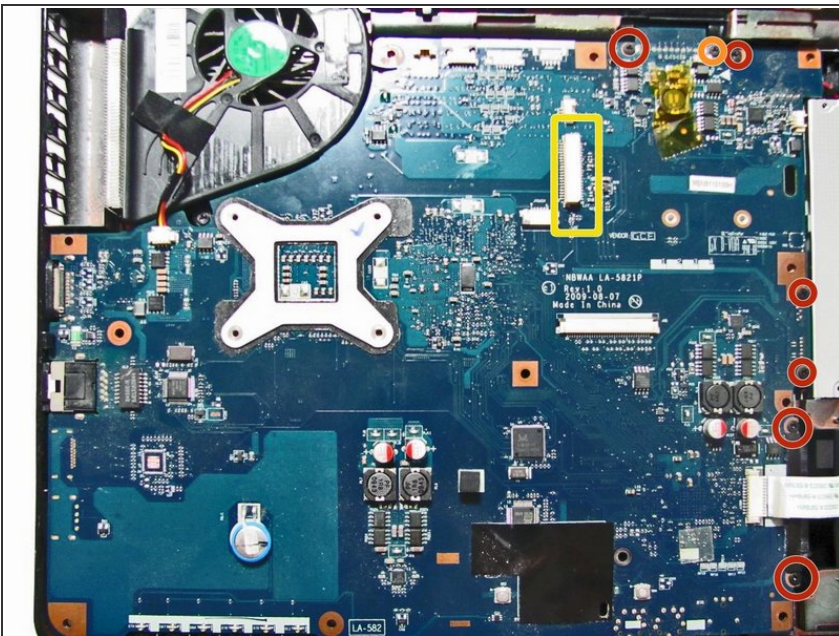
- Remove the two 6mm screws with a Phillips #00 screwdriver.

Step 11



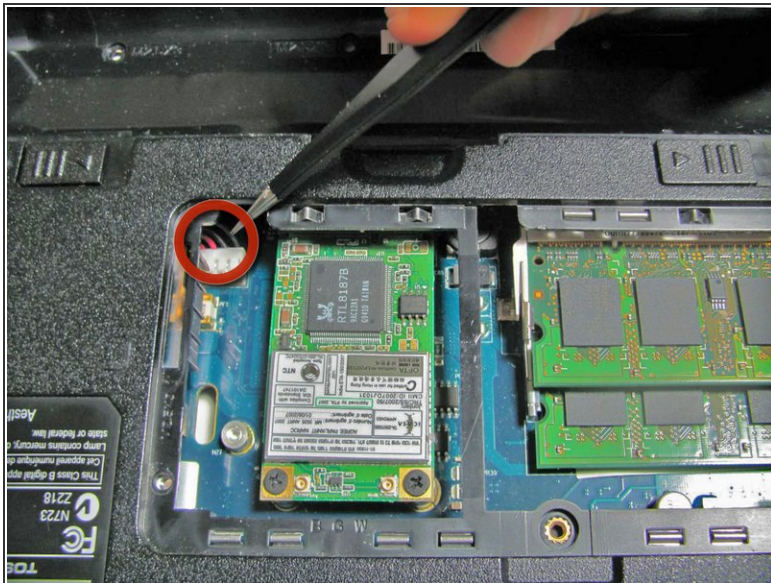
- Disconnect the red and yellow wires connecting the fan to the motherboard by pulling the wires straight out.
- Remove the fan.

Step 12 — Logic Board



- Remove the following with a Phillips #00 Screwdriver:
 - Six 7mm Phillips Head screws
 - One 5 mm Phillips Head screw
 - Remove the LCD screen tab

Step 13



- A red wire connects the motherboard to the computer, so release the wire by pulling it straight out.
- After all the screws are removed, lift the motherboard up and away from the earphone jacks that are located at the front of the laptop.

To reassemble your device, follow these instructions in reverse order.