



# Toshiba Satellite L455D-S5976 Optical Drive Replacement

This guide will show you how to replace the optical drive in your device.

Written By: NateJohnson



## INTRODUCTION

The optical drive is what reads a CD or DVD when placed in the drive. To replace it, follow the steps outlined in this guide.

---

### TOOLS:

- [Phillips #1 Screwdriver](#) (1)
  - [Spudger](#) (1)
-

## Step 1 — Battery



- Unlock the right tab by sliding it to the right with your finger.

## Step 2



- Hold the left tab to the left using your left hand.

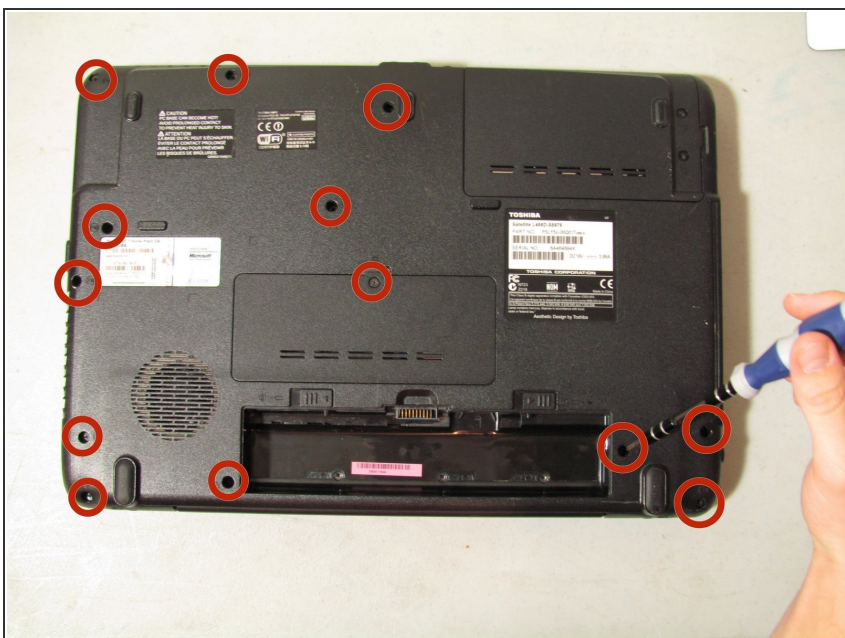


### Step 3



- Remove the battery by placing your finger in the middle groove and lifting up.

### Step 4 — Optical Drive



- Remove the 13 Phillips #1 10mm screws from the backside of your computer using a Phillips #1 screwdriver.

## Step 5



- Remove the two Phillips #1 6mm screws from the backside of your computer using a Phillips #1 screwdriver.

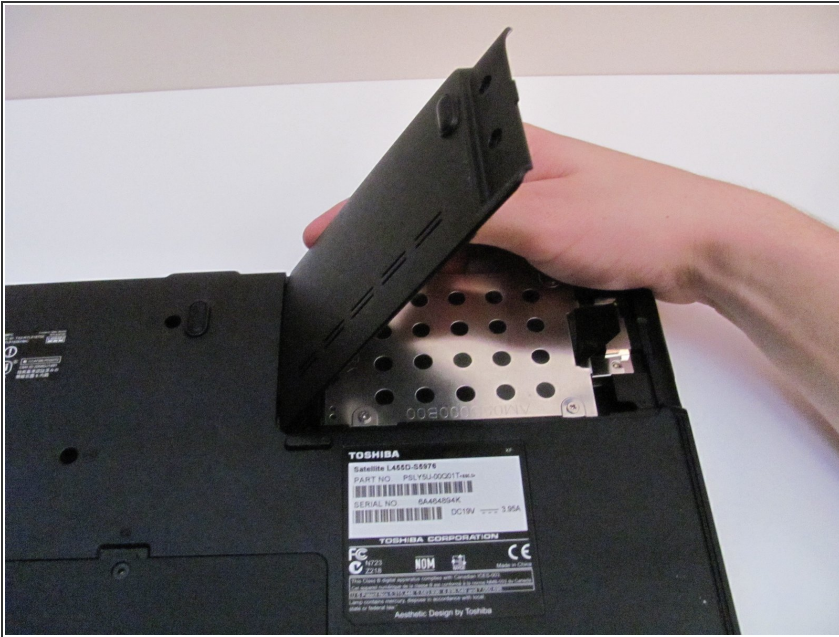
## Step 6



- Remove the three 3mm screws from beneath the battery with a Phillips #1 screwdriver.



## Step 7



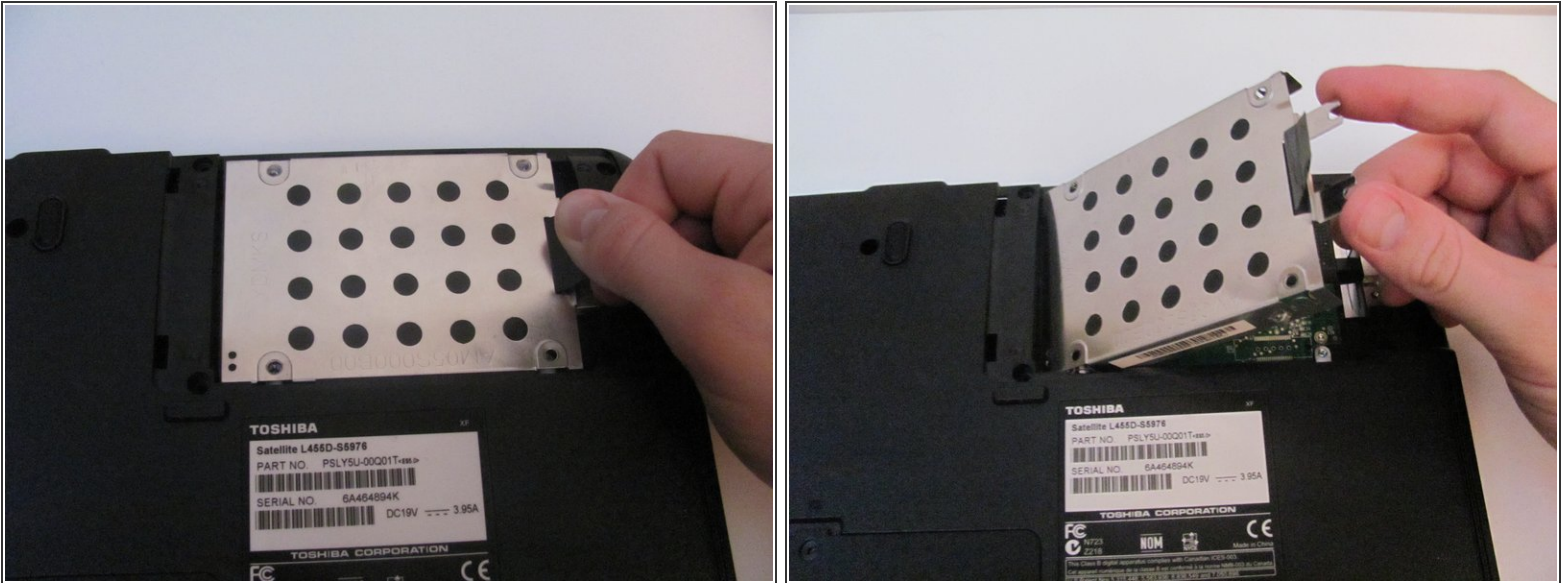
- Lift up the corner panel and remove it with your hand.

## Step 8



- Unscrew the four Phillips #1 3mm using a Phillips #1 screwdriver.
- Unscrew the four 10mm screws around hard drive using a Phillips #1 screwdriver.

## Step 9



- To remove the hard drive case, first pull the black tab to the right.
- Then pull the black tab up to remove the case.

## Step 10



- Remove the plastic strip above the "F" keys using the spudger by placing the small end of the spudger under the strip and lifting up.



## Step 11



- Remove the two Phillips #1 3mm screws underneath the plastic strip using a Phillips #1 screwdriver.

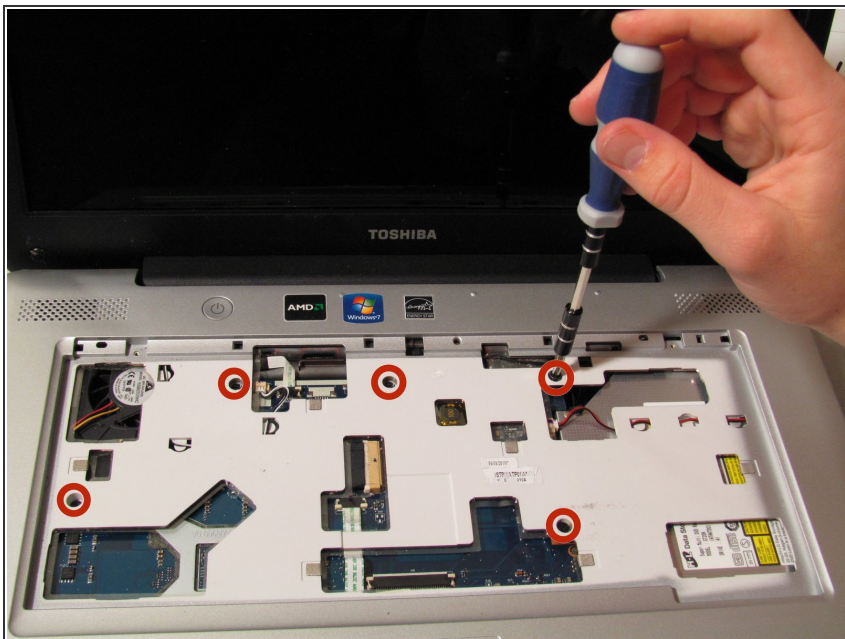
## Step 12



- Lift the keyboard up and remove it with your hands.

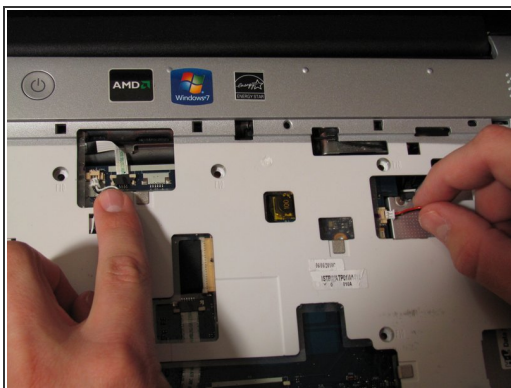


## Step 13



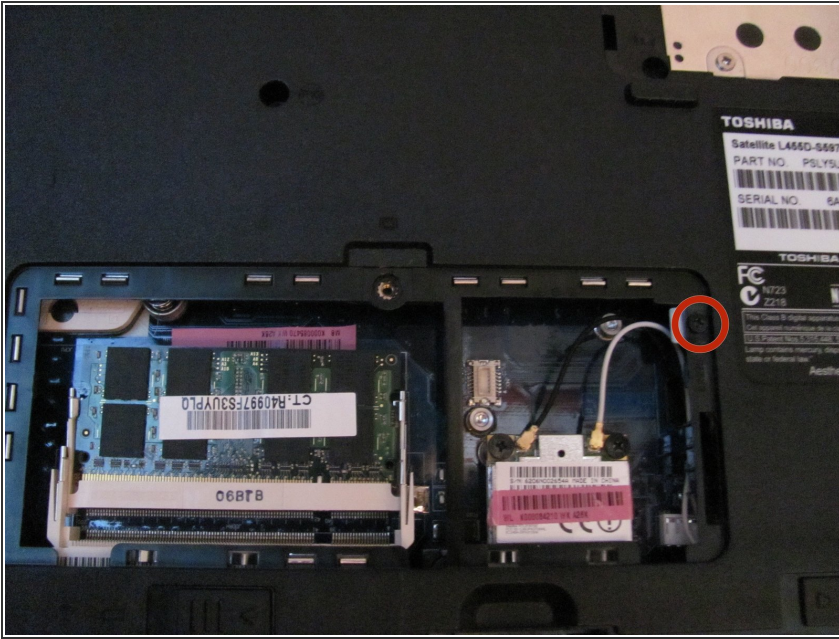
- Remove the five Phillips #1 10mm screws underneath the keyboard using a Phillips #1 screwdriver.

## Step 14



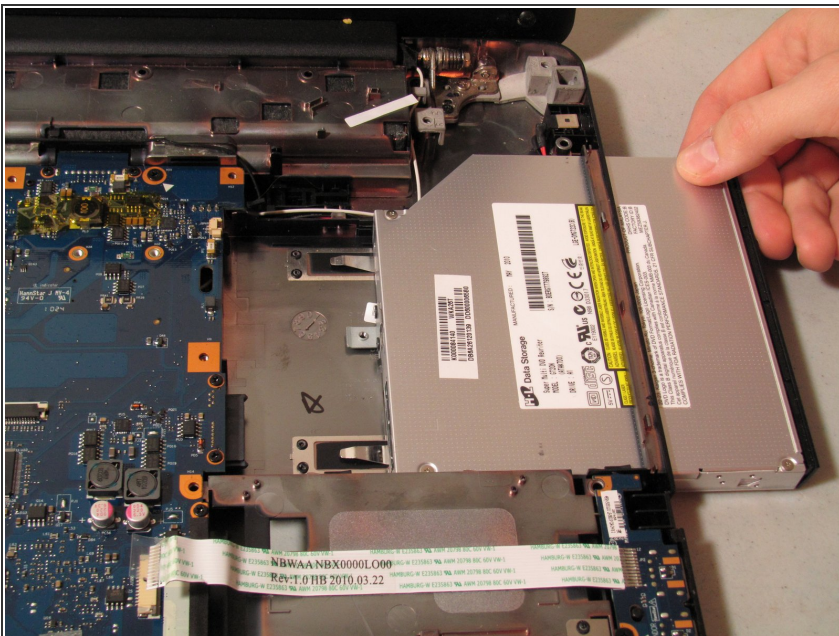
- Lift up the plastic panel and carefully disconnect the red and white ports.
- Remove the panel

## Step 15



- Turn the laptop over so the bottom is facing up
- Then remove the 3mm screw with a #1 screwdriver, located underneath the panel containing the wifi card and RAM

## Step 16



- Turn the laptop back over so the motherboard is facing up
- Now slide the optical drive out of the computer by gently pulling it to the right

To reassemble your device, follow these instructions in reverse order.