



Toshiba Satellite L455D-S5976 RAM Replacement

This guide will show you how to replace the RAM in your device.

Written By: NateJohnson



INTRODUCTION

The RAM is an essential part of the computer that helps it run. Without the RAM, the computer will be slower and will not have as much memory. This guide will give the steps necessary to replace the RAM.



TOOLS:

- [Phillips #1 Screwdriver](#) (1)
-

Step 1 — RAM



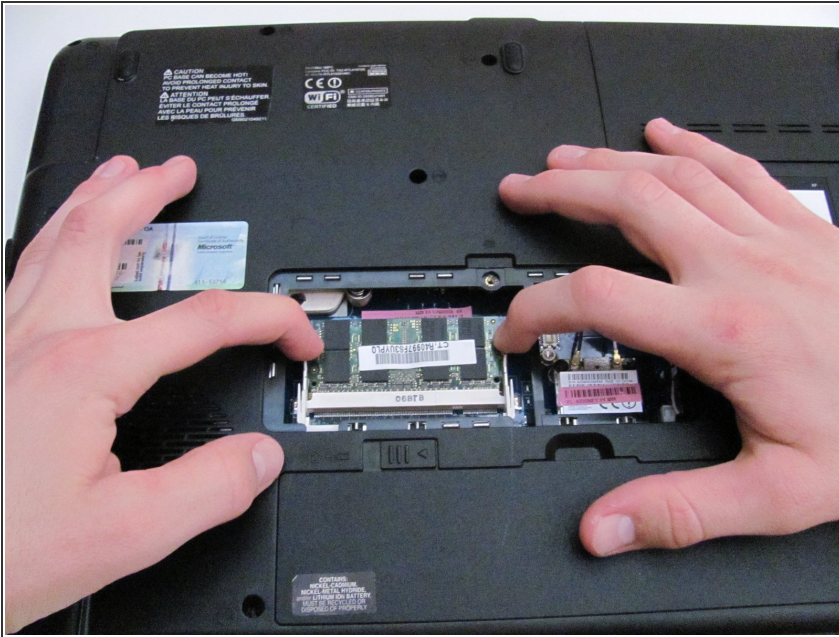
- Unscrew the 4mm screw from the middle panel using a Phillips #1.

Step 2



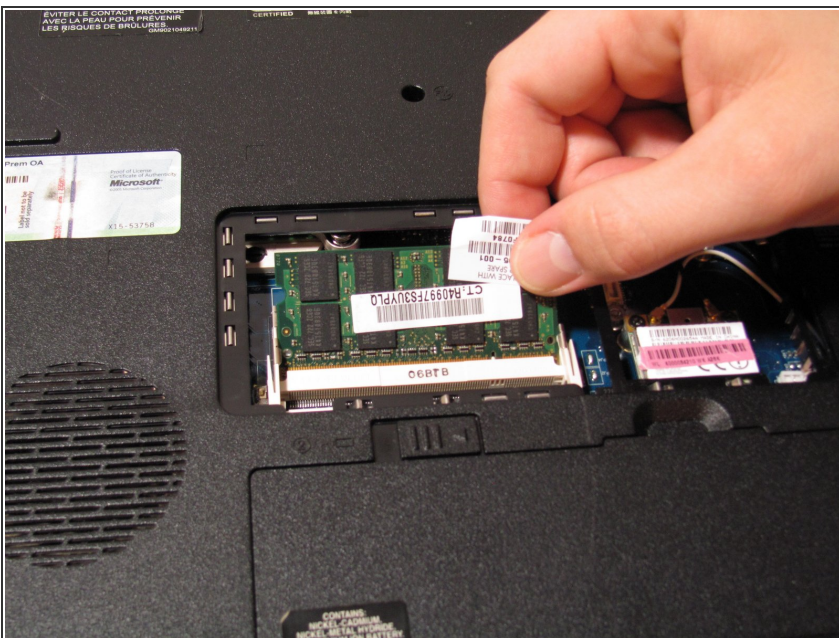
- Lift up on the middle panel and remove it.

Step 3



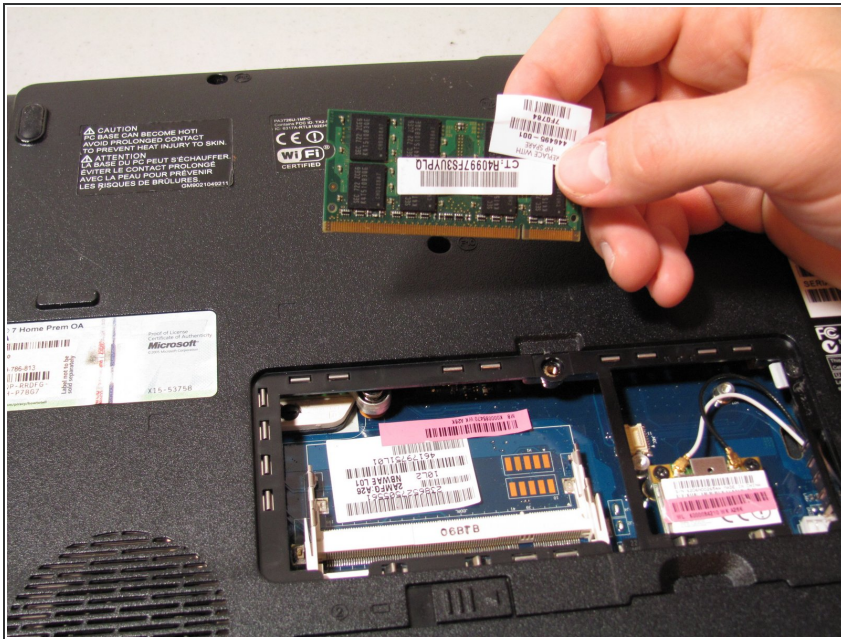
- Pull the right clip to the right and left clip to the left using your right and left hands respectively.

Step 4



- Once the clips have been removed, the RAM will pop up.

Step 5



- Slide the RAM out of its position and remove it.

To reassemble your device, follow these instructions in reverse order.