



Toshiba Satellite L455D-S5976 Wifi Card Replacement

This guide will show you how to replace the wifi card in your device.

Written By: NateJohnson



INTRODUCTION

The wifi card enables the computer to be compatible with wifi. If the card is malfunctioning, the computer will not receive a signal from any wifi sources. This guide shows how to remove the wifi card so it can be replaced.



TOOLS:

- [Phillips #1 Screwdriver](#) (1)



PARTS:

- [New wifi card](#) (1)

Step 1 — Wifi Card



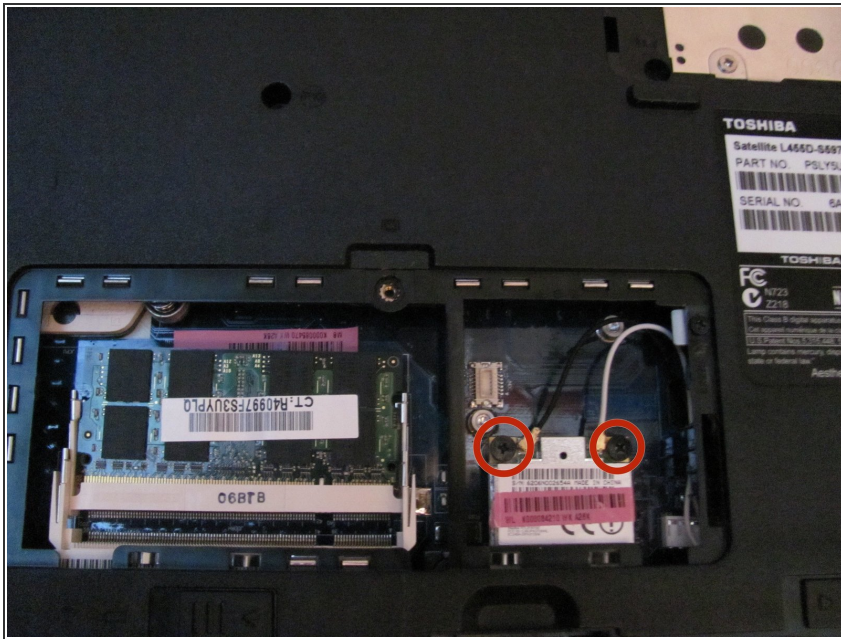
- Unscrew the Phillips #1 4mm screw from the middle panel using a Phillips #1 screwdriver.

Step 2



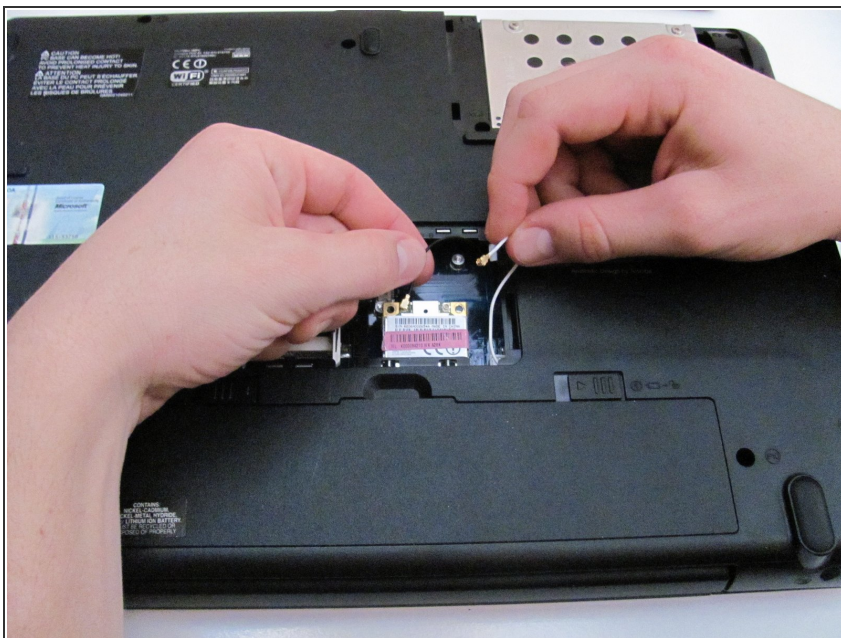
- Remove the middle panel by lifting up and out.

Step 3



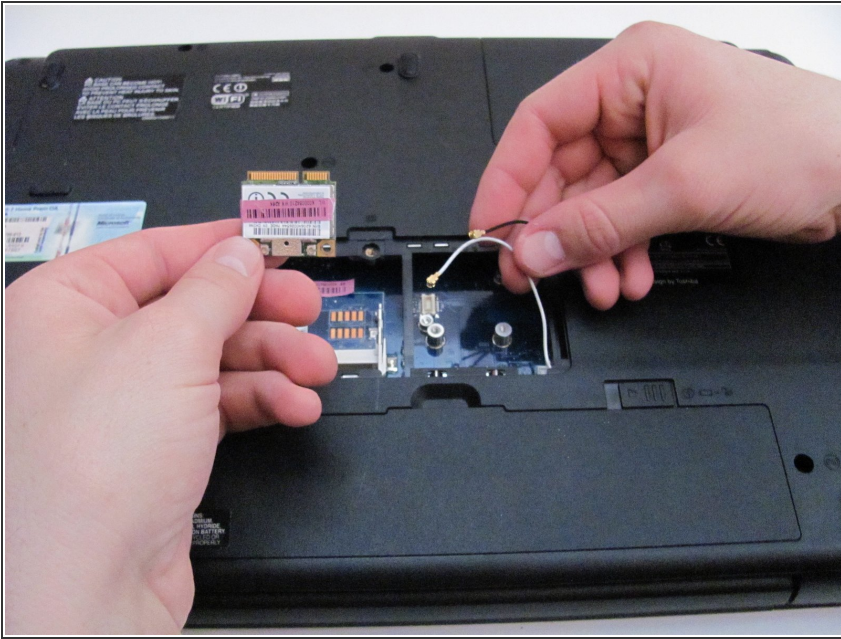
- Remove the two Phillips #1 6mm screws from the wifi card using a Phillips #1 screwdriver.

Step 4



- Unsnap the two cables from the wifi card.

Step 5



- Remove the wifi card using your hands.

To reassemble your device, follow these instructions in reverse order.