



# Toshiba Satellite L505 Laptop Keyboard Replacement

This guide is for the removal and replacement of the Toshiba Satellite L505.

Written By: Matias



## INTRODUCTION

Removing the keyboard from this laptop is a very simple and easy process. It should be noted that even though it is simple, it is equally as easy to push a component on the hard drive out of place since some parts of the motherboard are exposed under the keyboard



### TOOLS:

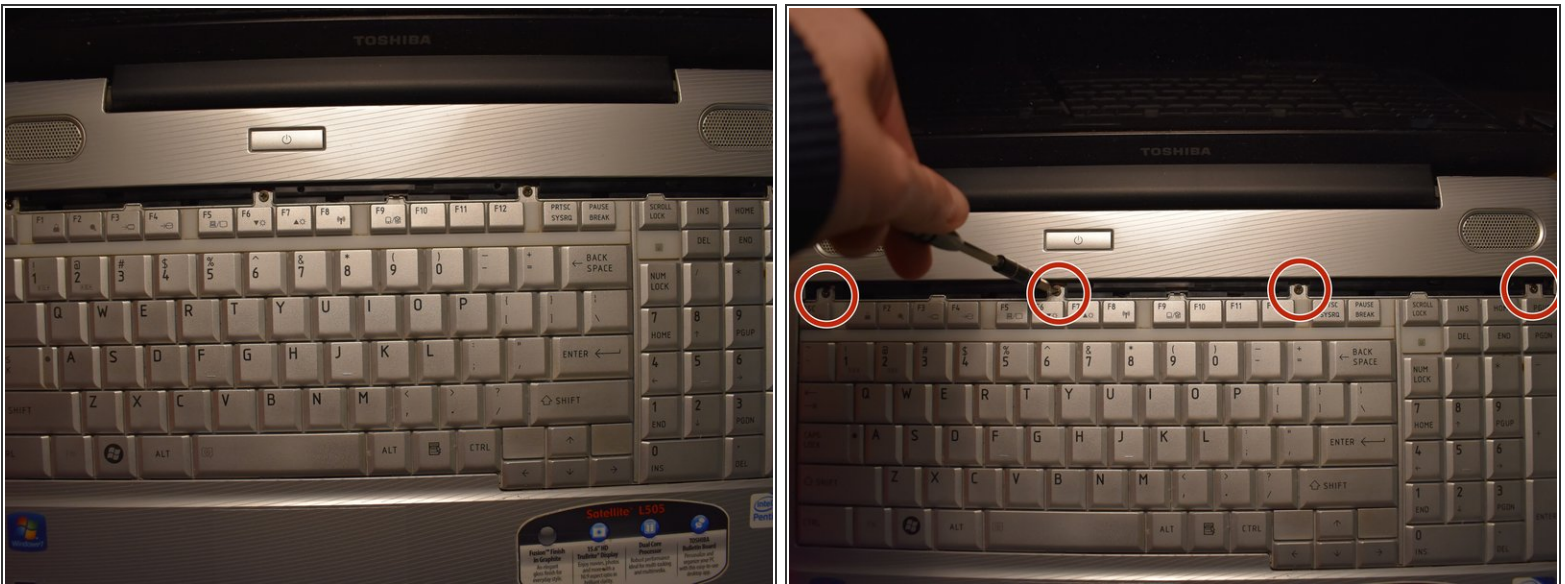
- [ESD-safe pry tool](#) (1)
  - [Phillips #1 Screwdriver](#) (1)
-

## Step 1 — Keyboard



- Open the laptop and locate the plastic strip just above the keyboard.
- With care, slide the prying tool into an end and lift it up until you hear an audible click, meaning it has separated.
- Slowly slide a finger or the prying tool under and follow the strip to the opposite end, completely detaching the strip.

## Step 2



- Remove the four screws using the Phillips #1 screwdriver.



### Step 3



- Gently push the clip back as you lift the top of the keyboard towards you.
- ⓘ There is a cable connecting the keyboard to the motherboard so do not lift the keyboard all the way out yet.

### Step 4



- Gently disconnect the connector strip by pushing the white clips forward.
- Carefully pull the strip out of its port.
- Remove the keyboard from the device.

To reassemble your device, follow these instructions in reverse order.