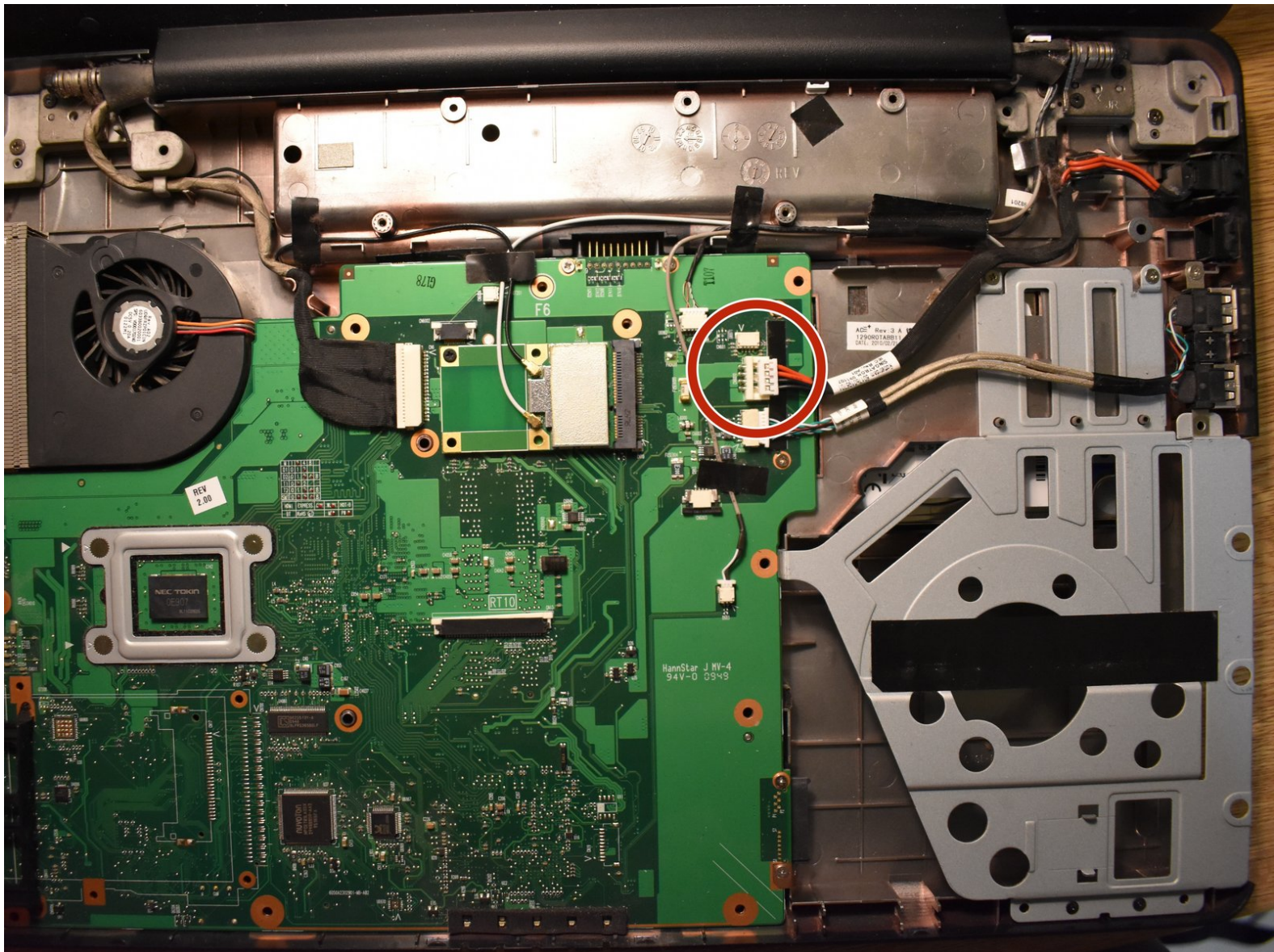




Toshiba Satellite L505 Laptop Power Jack Replacement

The purpose of this guide is to replace the power jack on the Toshiba Satellite L505 Laptop.

Written By: Matias



INTRODUCTION

Charging your laptop is necessary for everyday use. However, a faulty power jack can prevent a laptop battery from maintaining a proper charge and even charging at all. This guide will help you find and remove the power jack properly so it can be replaced.



TOOLS:

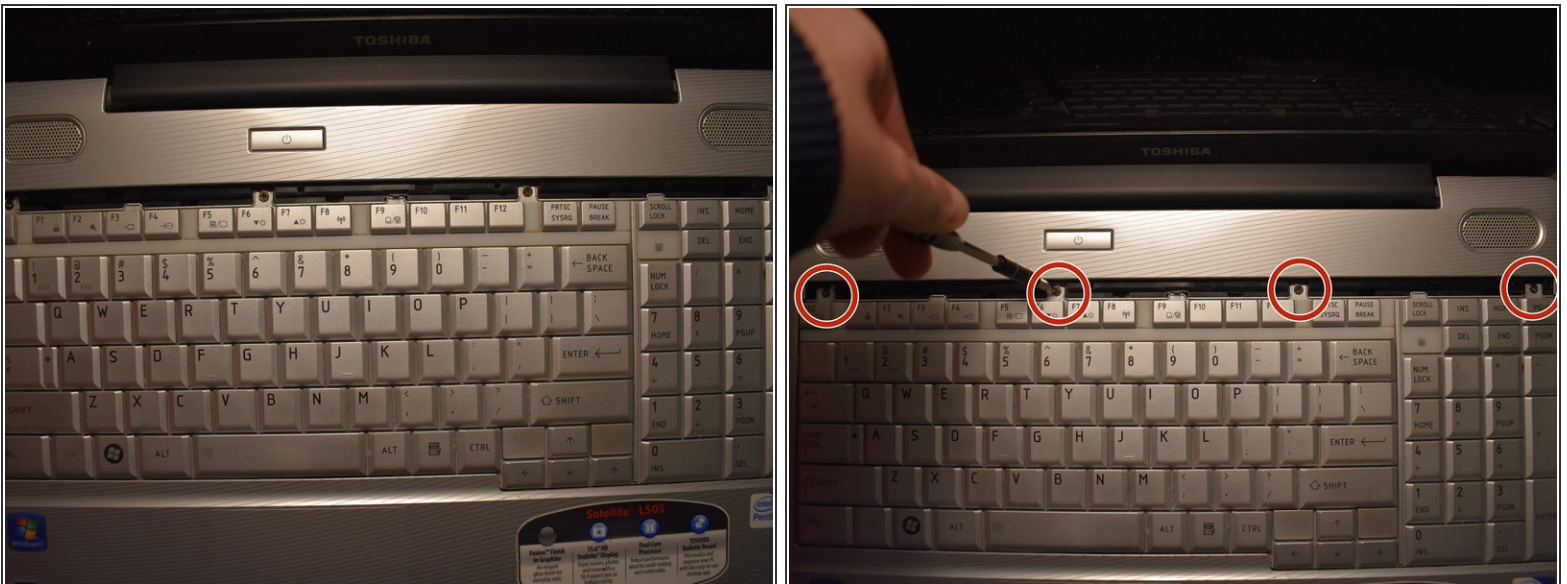
- [iFixit Opening Tools](#) (1)
 - [ESD-safe pry tool](#) (1)
 - [Phillips #1 Screwdriver](#) (1)
-

Step 1 — Keyboard



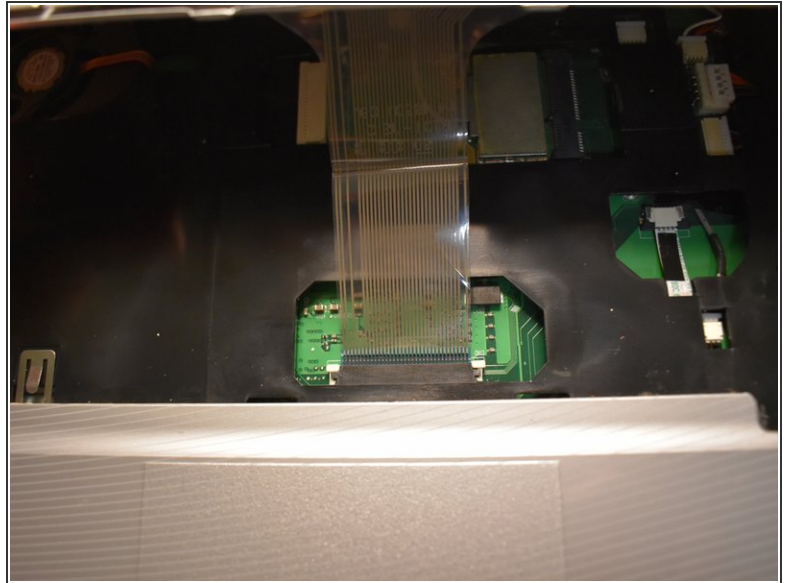
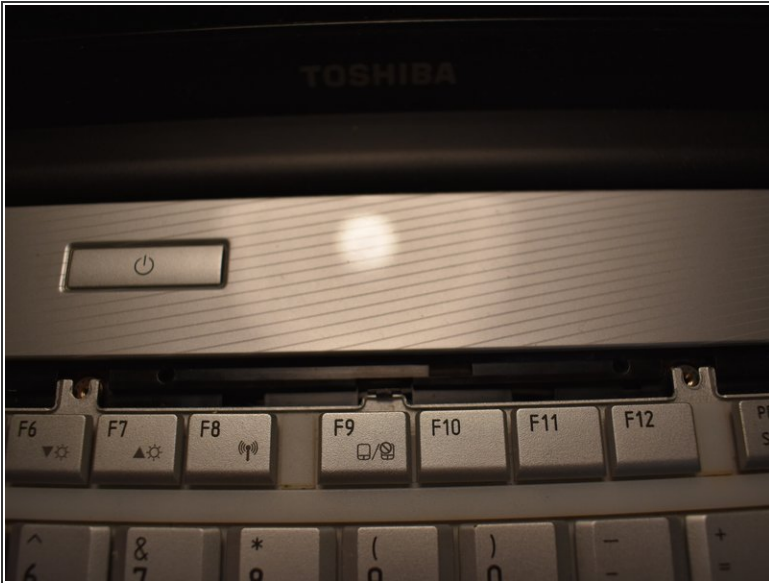
- Open the laptop and locate the plastic strip just above the keyboard.
- With care, slide the prying tool into an end and lift it up until you hear an audible click, meaning it has separated.
- Slowly slide a finger or the prying tool under and follow the strip to the opposite end, completely detaching the strip.

Step 2



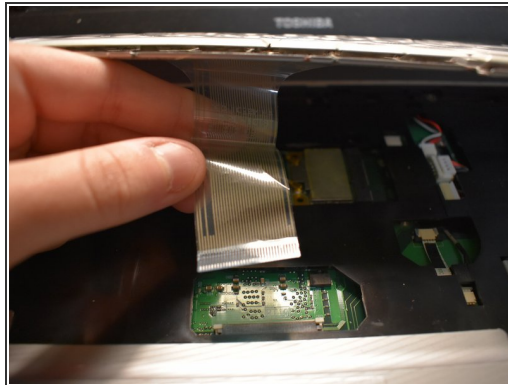
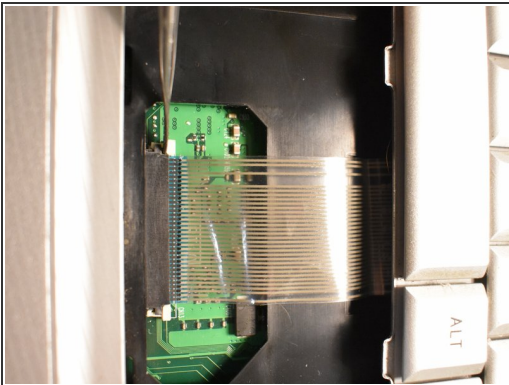
- Remove the four screws using the Phillips #1 screwdriver.

Step 3



- Gently push the clip back as you lift the top of the keyboard towards you.
- ⓘ There is a cable connecting the keyboard to the motherboard so do not lift the keyboard all the way out yet.

Step 4



- Gently disconnect the connector strip by pushing the white clips forward.
- Carefully pull the strip out of its port.
- Remove the keyboard from the device.

Step 5 — Optical Drive



- Turn the laptop upside down.
- Remove the screw labeled F4 using the Phillips #1 screwdriver.
- ⓘ There are 2 screws labeled F4, the correct screw is the one closer to the hard drive.

Step 6



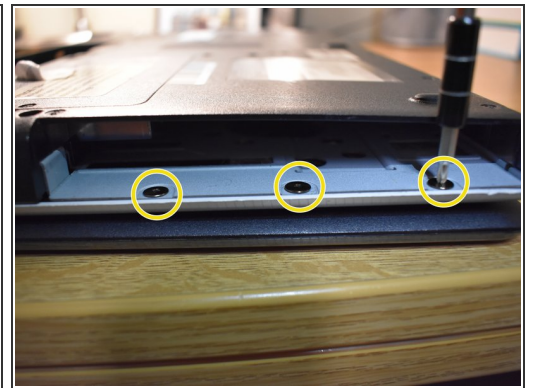
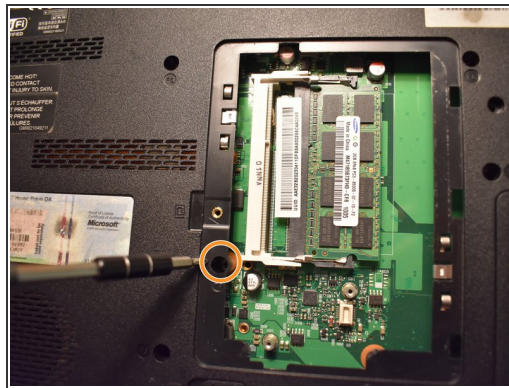
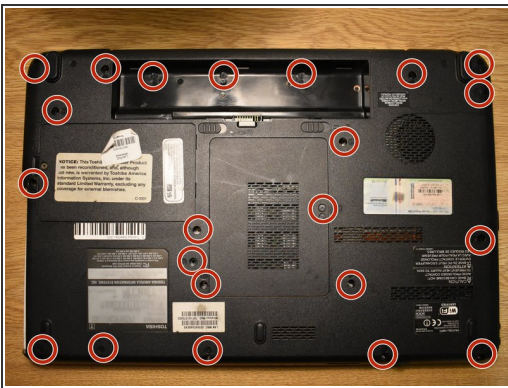
- Gently slide the optical drive out of the device.

Step 7 — Battery



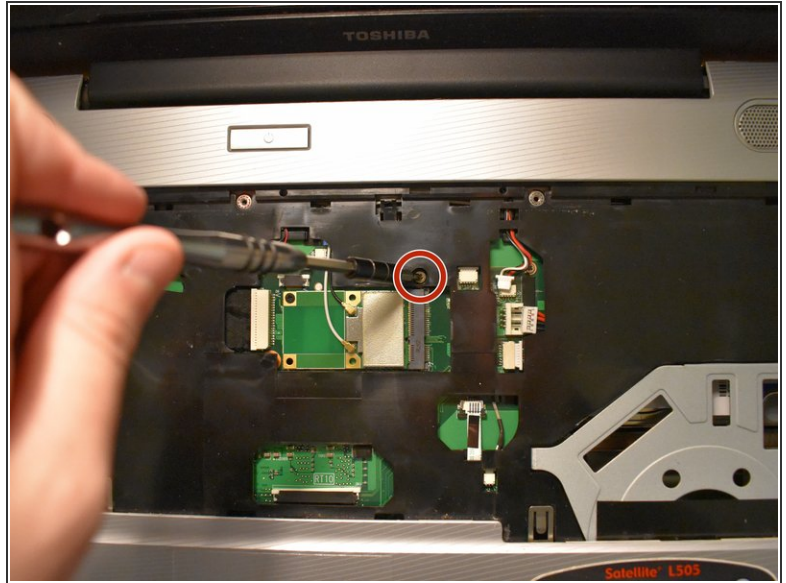
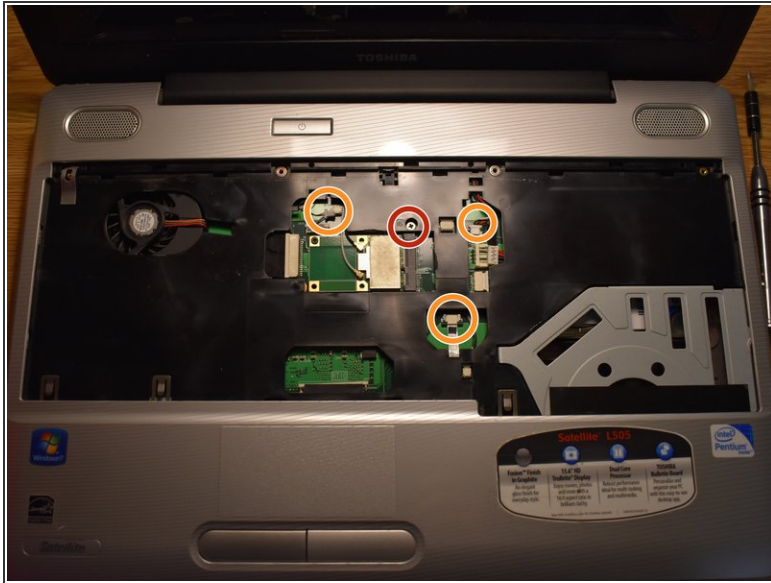
- Turn your laptop upside down, at the bottom of the laptop, slide the right sliding lock to the unlocked position.
- Slide the left sliding lock to the left and hold it. Using your fingers lift the battery out.

Step 8 — Palm Rest Assembly



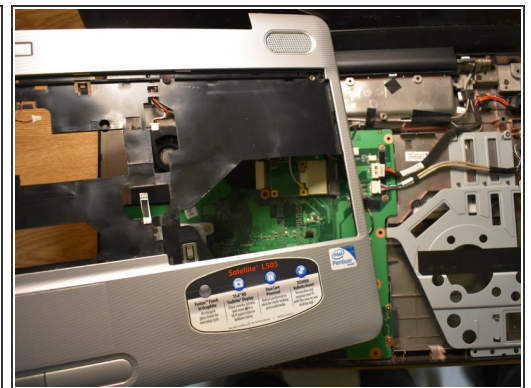
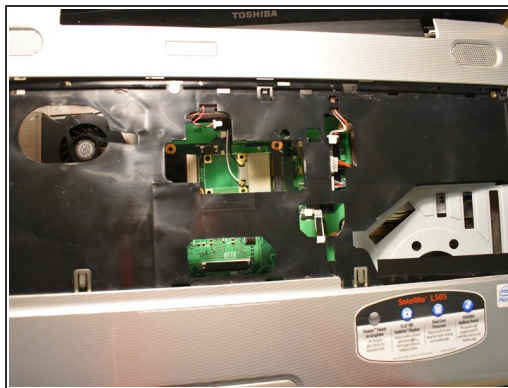
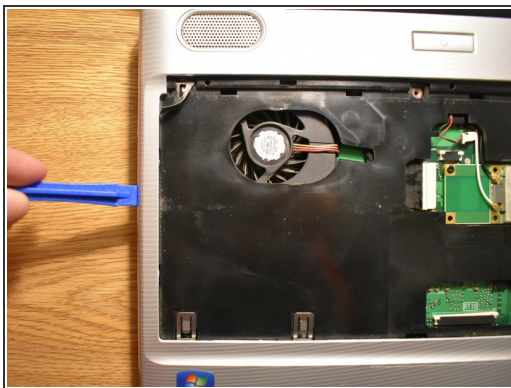
- Unscrew all of the screws marked on the underside of the laptop.
- Remove the screw marked in the second photo by lifting up the lid and unscrewing using a Phillips #1 screwdriver.
- Remove the three flat screws in the port where the Optical drive is housed in.

Step 9



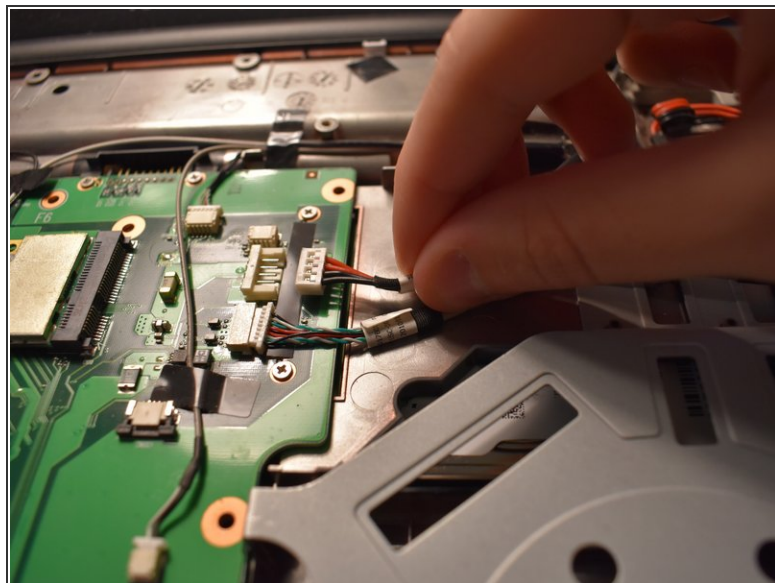
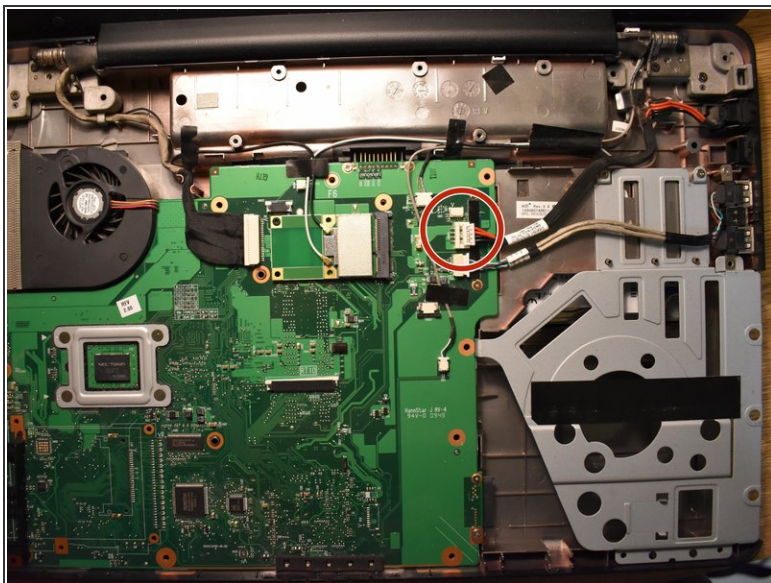
- Remove the keyboard and once that has been done, remove the screw marked "16."
- Disconnect all of the cables with a blue circle.

Step 10



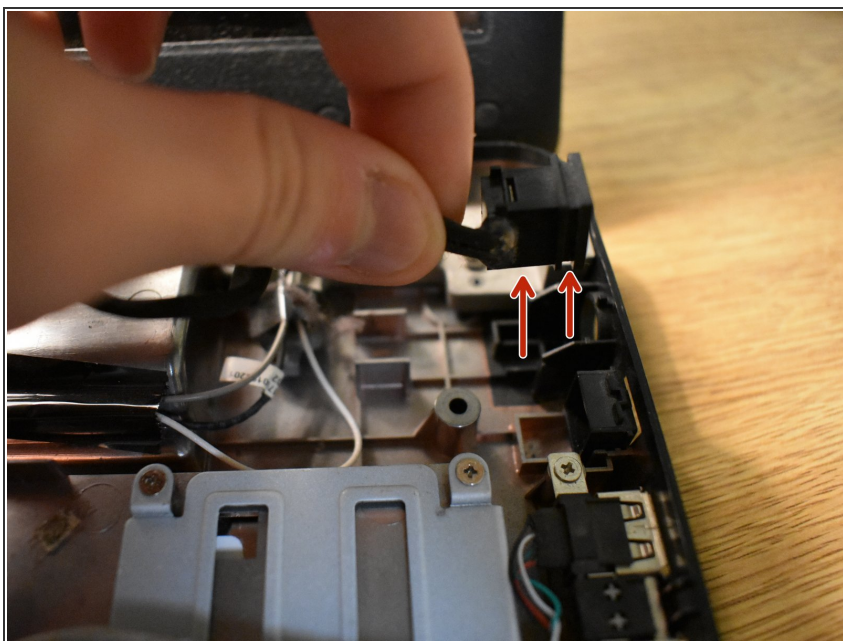
- Using the opening tool, carefully go around the edge and loosen the palm-rest assembly, until you can comfortably and easily lift it off.

Step 11 — Power Jack



- Once the motherboard is exposed, gently unplug the power cord from the motherboard.

Step 12



- Follow the cable to the power jack port and carefully lift up to remove it from the laptop.

To reassemble your device, follow these instructions in reverse order.