



Toshiba Satellite L505D-GS6000 Battery Replacement

Replace battery of your Toshiba Satellite L505D-GS6000 laptop.

Written By: Adam Dellicker



INTRODUCTION

This guide will show you how to replace your battery.

You may need to replace your battery if you notice your computer dying after short periods of use.

Replacing your battery is a short and easy process that should require no tools to complete.



TOOLS:

- [iFixit Opening Tools](#) (1)

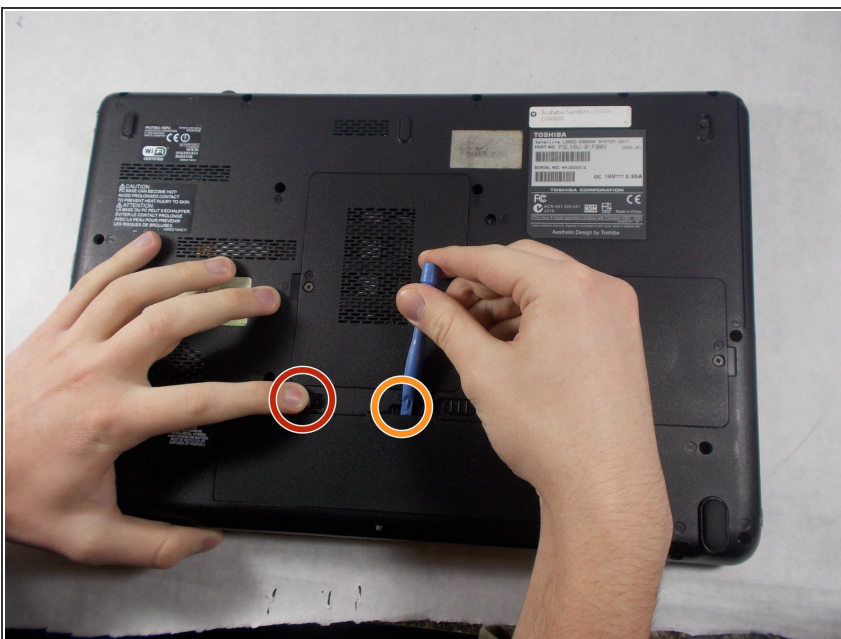
Not necessary but can make getting the battery out a bit easier.

Step 1 — Battery



- ⚠ Shut down the computer and disconnect all cables.
- Flip the computer over so that the bottom is facing up.
- Slide right switch above the battery so that it is in the rightwards position.

Step 2



- Push and hold the left-most switch in the leftward position.
- While holding the left switch in position, lift up on the battery from the groove in the casing and remove.

To reassemble your device, follow these instructions in reverse order.