



# Toshiba Satellite L505D-GS6000 Disk Drive Replacement

Replacement guide for CD disk drive of Toshiba L505D-GS6000.

Written By: Adam Dellicker



## INTRODUCTION

This guide is to be used if your disk drive is not operational and needs to be replaced.

You should replace your disk drive if it isn't able to read something and you tried other methods of fixing it, or if the disk drive itself won't open.

The process is fairly simple and will only require removal of one screw.



### TOOLS:

- [iFixit Opening Tools](#) (1)

*Not necessary but can make getting the battery out a bit easier.*

- [Phillips #0 Screwdriver](#) (1)
-

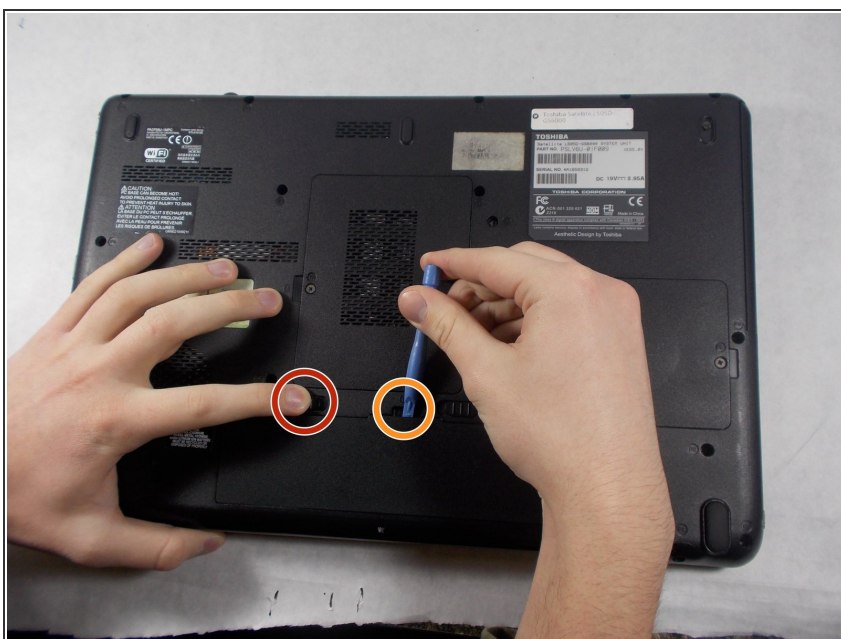
## Step 1 — Battery



⚠ Shut down the computer and disconnect all cables.

- Flip the computer over so that the bottom is facing up.
- Slide right switch above the battery so that it is in the rightwards position.

## Step 2



- Push and hold the left-most switch in the leftward position.
- While holding the left switch in position, lift up on the battery from the groove in the casing and remove.

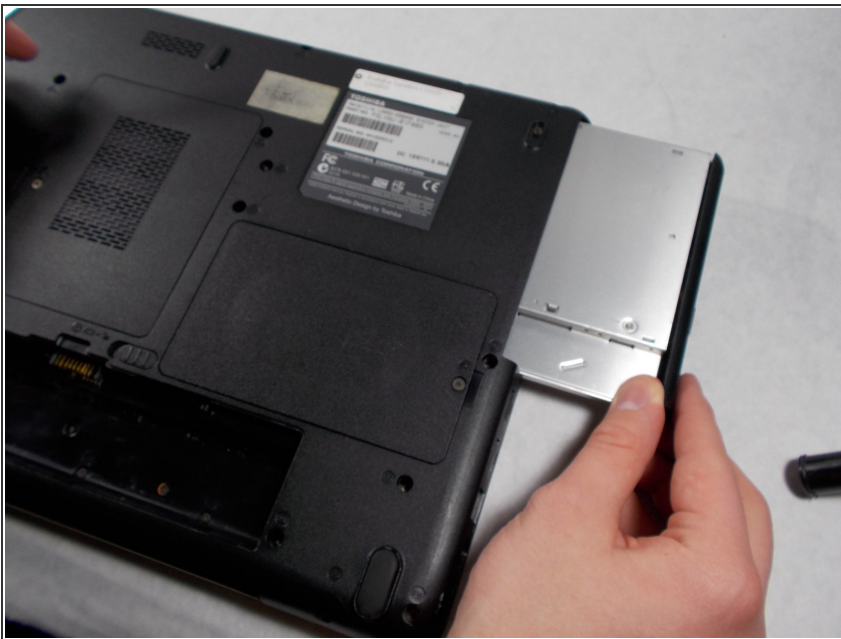


## Step 3 — Disk Drive



- Remove the M2 5x6 mm screw pointed out in the picture using the Phillips #0 screwdriver.
- ⓘ You do not need to remove anything else in order to take out the disk drive.

## Step 4



- Gently slide the disk drive out to the right until it is removed from the computer.
- ⚠ If the disk drive doesn't easily slide out then there is possible damage on the inside of the laptop.

To reassemble your device, follow these instructions in reverse order.