



Toshiba Satellite L55-A Back Cover Replacement

This guide shows how to remove the back cover of the Toshiba L55 laptop.

Written By: Arthur Shi



INTRODUCTION

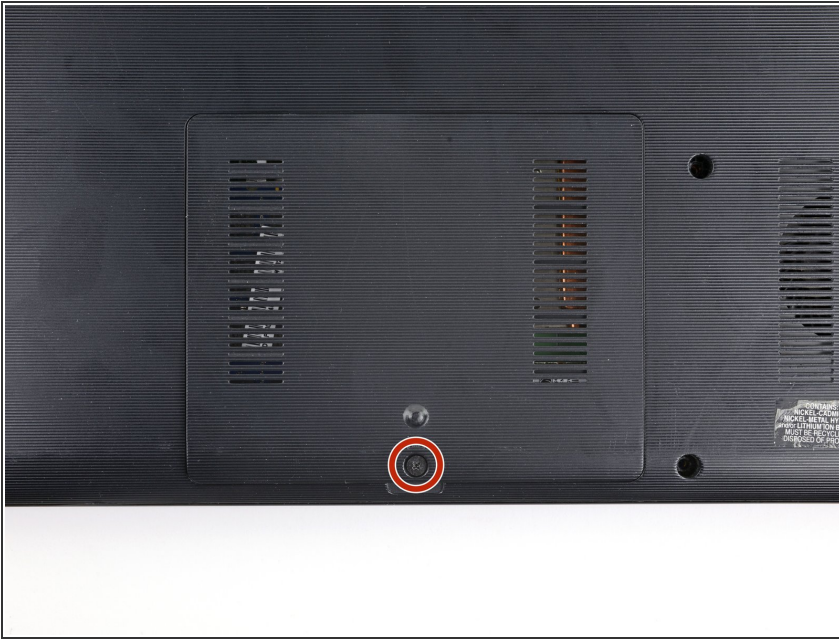
Follow this guide to remove the back cover of the Toshiba L55 laptop. This requires partially removing the DVD SuperMultiDrive, as a metal tab is trapped underneath it.



TOOLS:

- [iFixit Opening Tools](#) (1)
 - [Phillips #1 Screwdriver](#) (1)
 - [iFixit Opening Picks set of 6](#) (1)
-

Step 1 — Remove the RAM cover



- ❗ Before you begin, be sure to power down your laptop.
- Flip the laptop over so that the back cover is facing up.
- Unscrew the captive Phillips screw securing the RAM cover.

Step 2



- Lift up the edge of the RAM cover and remove it.

Step 3 — Disconnect the ethernet connector cable



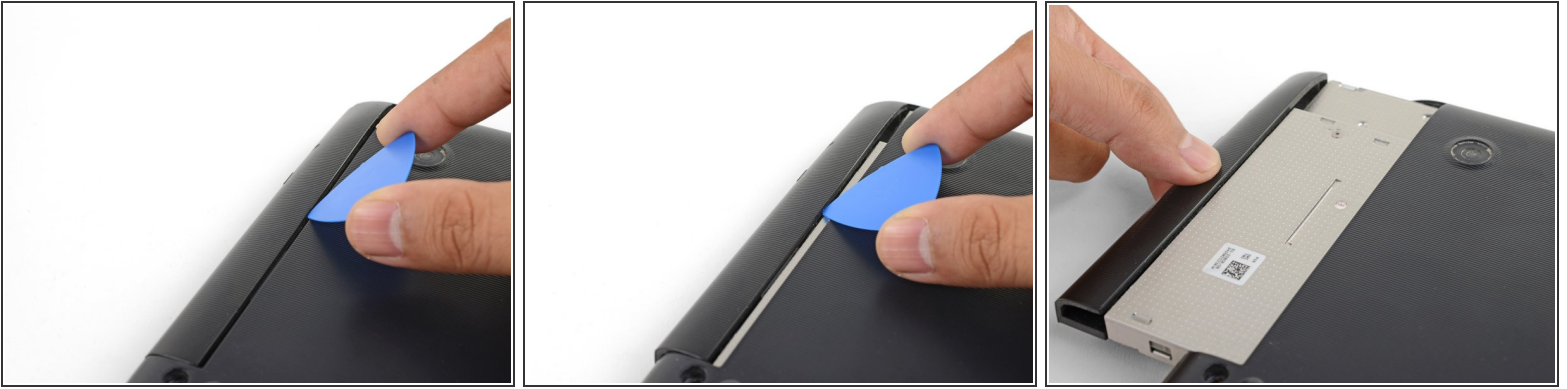
- Use an opening tool to pry up the ethernet connector cable from its socket near the RAM module.
 - Disconnect the cable.
- ☒ During reassembly, make sure you re-insert this connector right-side-up. The connector is keyed to plug in only one orientation, so if it doesn't slide into place easily, turn it around and try the other way.

Step 4 — Remove the back cover



- Remove the thirteen 6.8 mm long Phillips screws securing the back cover.

Step 5



- Insert the point of an opening pick in the seam between the SuperMultiDrive and the rest of the back cover.
- Push the SuperMultiDrive's lip away from the back cover to disconnect the drive.
- Slide the drive out of the bay and remove it from the laptop.

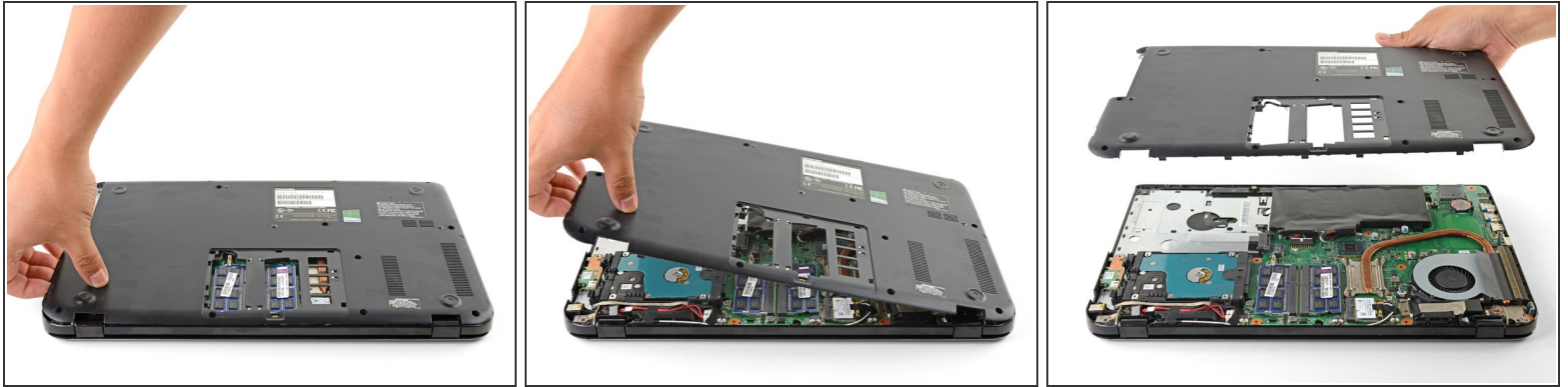
Step 6



i The back cover is still held in place by plastic clips.

- Insert the point of an opening pick into the back cover seam near the ethernet port.
- Twist the pick to release the plastic clips along the edge.

Step 7



- Grasp the loosened back case edge with your hand and lift it slowly away from the laptop. The remaining clips should release with ease.
 - ⓘ If you meet significant resistance, **stop** and check for forgotten screws.
 - Remove the back cover.
- 🔧 To reinstall the back cover, align the cover and press along the edges to snap the clips back in place.

To reassemble your device, follow these instructions in reverse order.