



Toshiba Satellite L55-B5396 Back Panel Replacement

How to replace a Toshiba Satellite L55-B5396 back panel.

Written By: Johnny thapa





TOOLS:

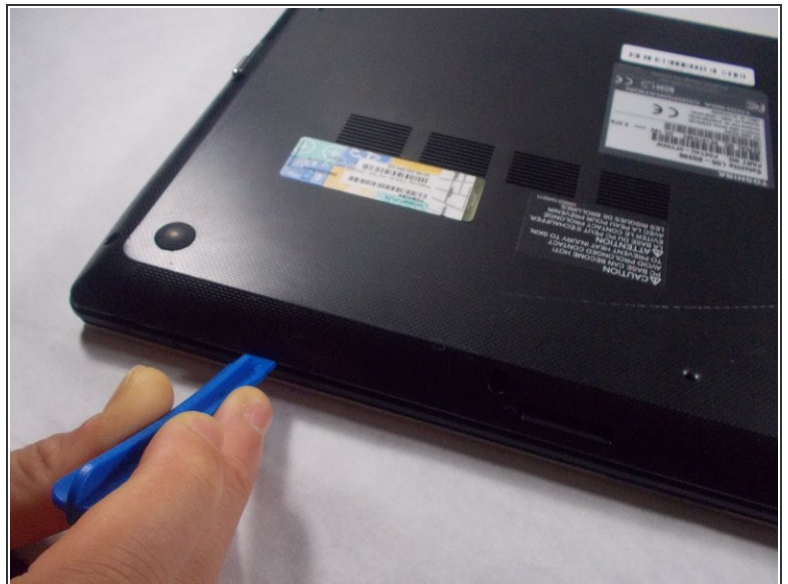
- [Phillips #2 Screwdriver](#) (1)
 - [iFixit Opening Tools](#) (1)
-

Step 1 — Back Panel



- Use the iFixit opening tool to slowly pry the edge of the laptop open from both sides.

Step 2



- Here is a close up of where to insert the tool precisely.

Step 3



- This is how the laptop will look once the back panel is taken out.