



# Toshiba Satellite L55W-C5256 Battery Replacement

Learn how to safely remove and replace the battery of your Toshiba Satellite L55W-C5256.

Written By: Jennifer



## INTRODUCTION

This guide will instruct you on how to remove and replace the battery of your Toshiba Satellite L55W-C5256. You may need to do so if:

- Your device will not hold a charge
- Your device will only power on when plugged into an AC adapter
- Your device will not power on or charge

Before beginning this replacement guide, it is recommended that you use an anti-static work mat and that you ground yourself using an anti-static wrist strap. This helps to protect your device from damage caused by static discharge. If you do not have these materials, you can find an anti-static wrist strap [here](#), and an anti-static work mat [here](#). To learn how to properly use an anti-static wrist strap and an anti-static work mat (recommended), see the guide found [here](#).



### TOOLS:

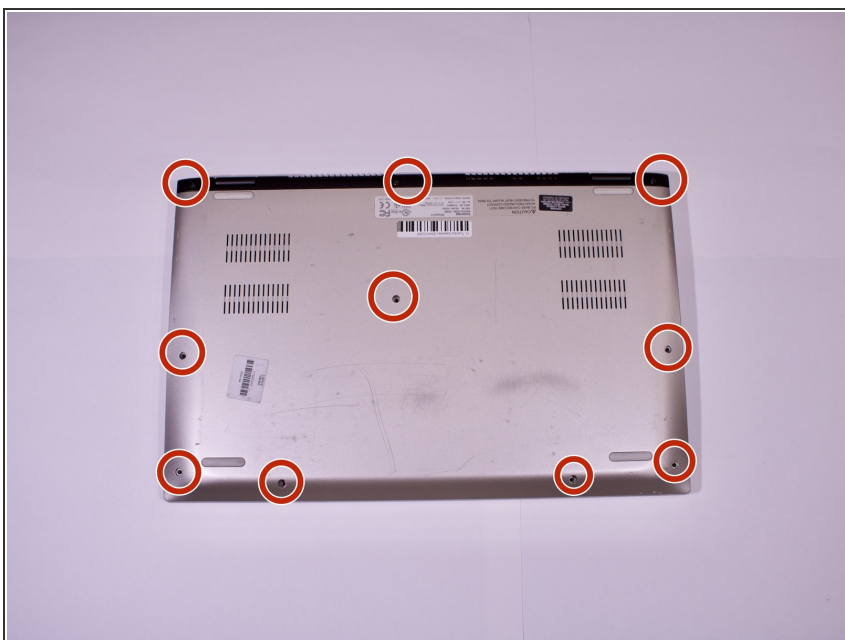
- [iFixit Opening Tools](#) (1)
  - [Magnetic Project Mat](#) (1)
  - [Anti-Static Wrist Strap](#) (1)
  - [Phillips #00 Screwdriver](#) (1)
-

## Step 1 — Battery



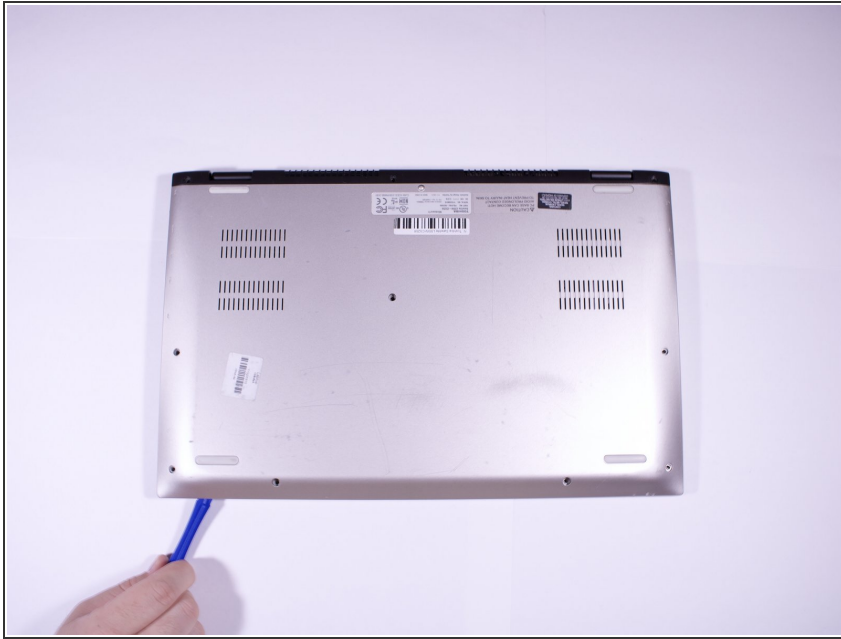
- ⚠ Before beginning this repair, power off your device and unplug all cables and accessory devices.
- Flip the laptop over so that the model numbers are facing the ceiling.

## Step 2



- Use a Phillips #00 screwdriver to remove the 10 screws that secure the back cover to the device.

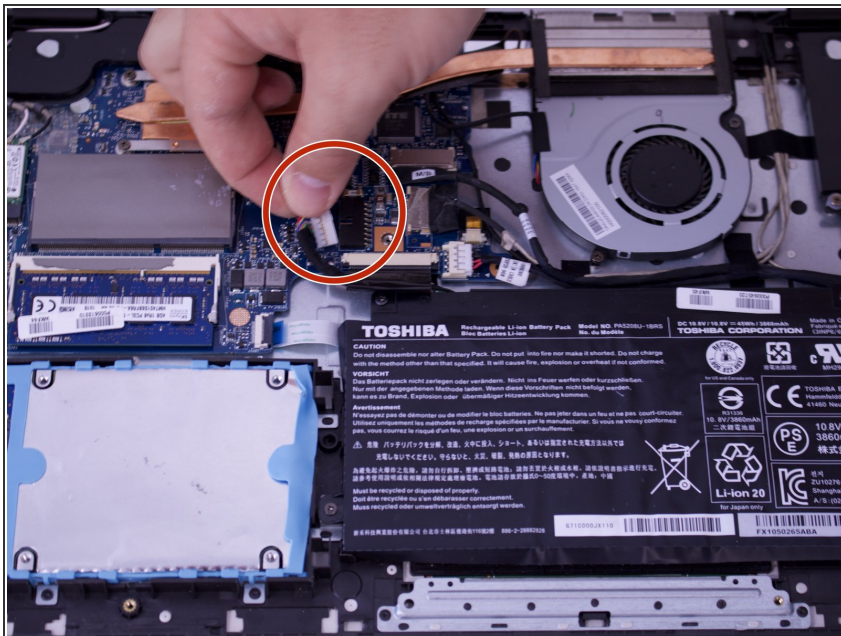
## Step 3



- Gently use an iFixit opening tool to separate the back cover from the laptop. Go around all edges until plastic clips are completely free.

⚠ Ensure all plastic clips have been freed. Attempting to forcefully remove the back cover could result in damage to your device.

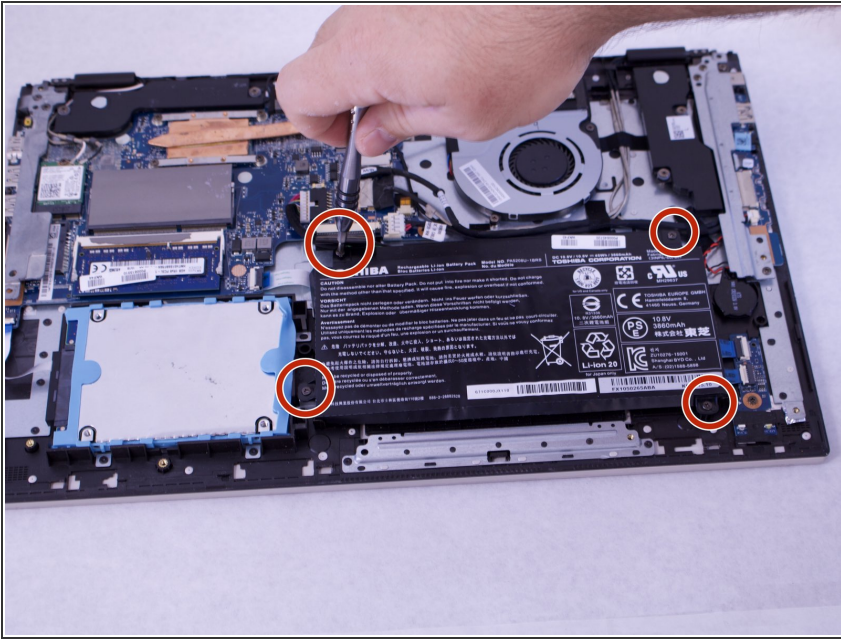
## Step 4



⚠ Before touching any component inside your device, ensure you are properly grounded with an anti-static band.

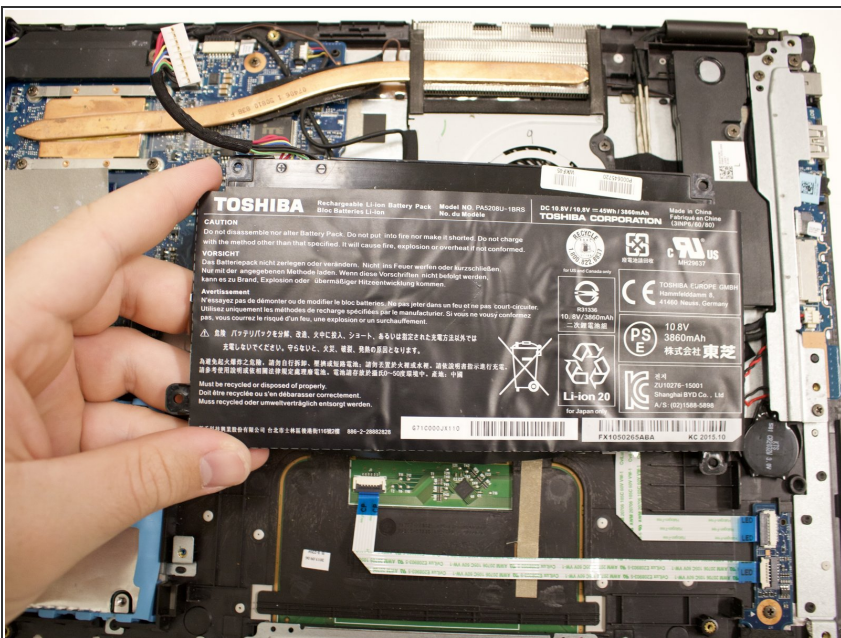
- Disconnect the battery connector cable from the motherboard.

## Step 5



- Using a Phillip's #00 screwdriver, remove the four 7.0 mm screws that secure the battery to the motherboard.

## Step 6



- Lift the battery from the motherboard.

To reassemble your device, follow these instructions in reverse order.