



Toshiba Satellite L55W-C5256 Hard Drive Replacement

Learn how to safely remove and replace the hard drive of your Toshiba Satellite L55W-C5256 .

Written By: Jennifer



INTRODUCTION

This guide will instruct you on how to safely remove and replace the hard drive of your Toshiba Satellite L55W-C5256. You may need to do this if:

- Your device's hard drive is making a clicking noise, indicating component failure
- Your device will not boot or is displaying a blue screen of death

Before beginning this replacement guide, it is recommended that you use an anti-static work mat and that you ground yourself using an anti-static wrist strap. This helps to protect your device from damage caused by static discharge. If you do not have these materials, you can find an anti-static wrist strap [here](#), and an anti-static work mat [here](#). To learn how to properly use an anti-static band and an anti-static work mat (recommended), see the guide found [here](#).

TOOLS:

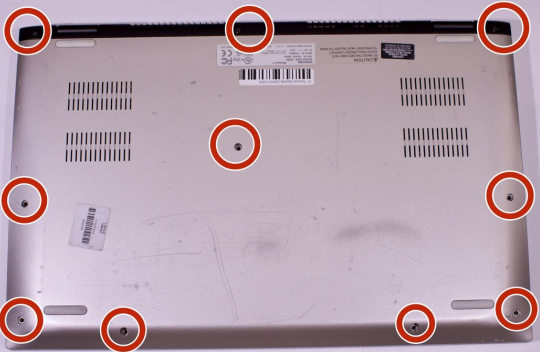
- [Phillips #00 Screwdriver](#) (1)
 - [iFixit Opening Tools](#) (1)
 - [Magnetic Project Mat](#) (1)
 - [Anti-Static Wrist Strap](#) (1)
-

Step 1 — Battery



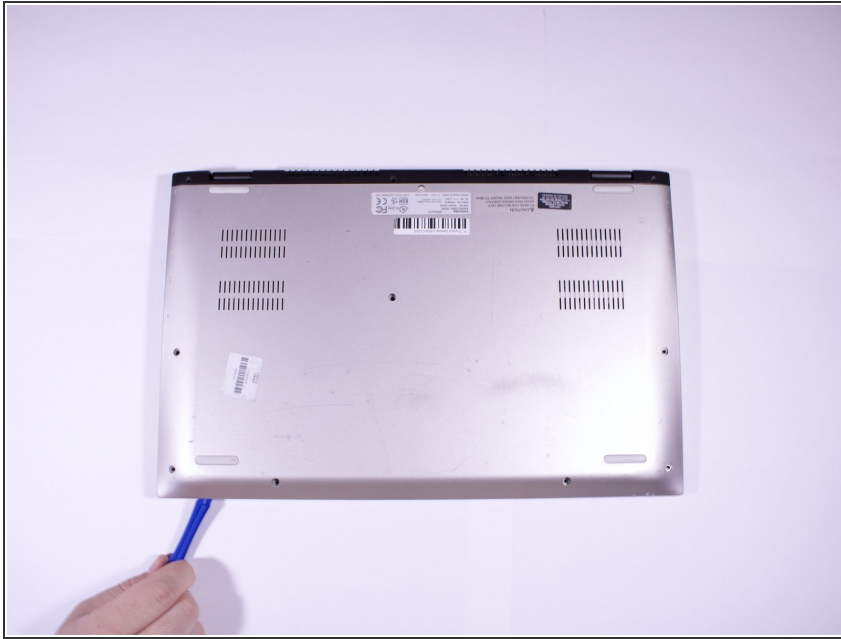
- ⚠ Before beginning this repair, power off your device and unplug all cables and accessory devices.
- Flip the laptop over so that the model numbers are facing the ceiling.

Step 2



- Use a Phillips #00 screwdriver to remove the 10 screws that secure the back cover to the device.

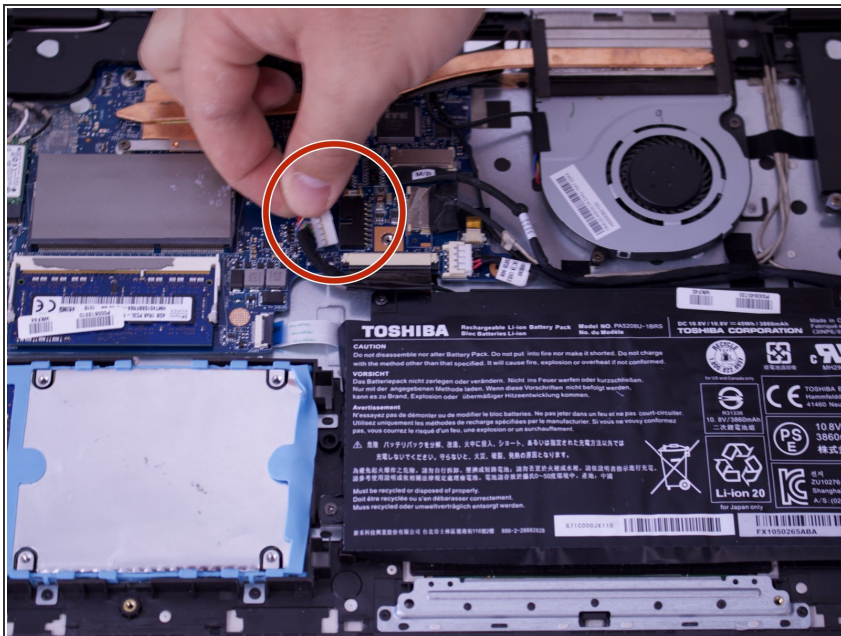
Step 3



- Gently use an iFixit opening tool to separate the back cover from the laptop. Go around all edges until plastic clips are completely free.

⚠ Ensure all plastic clips have been freed. Attempting to forcefully remove the back cover could result in damage to your device.

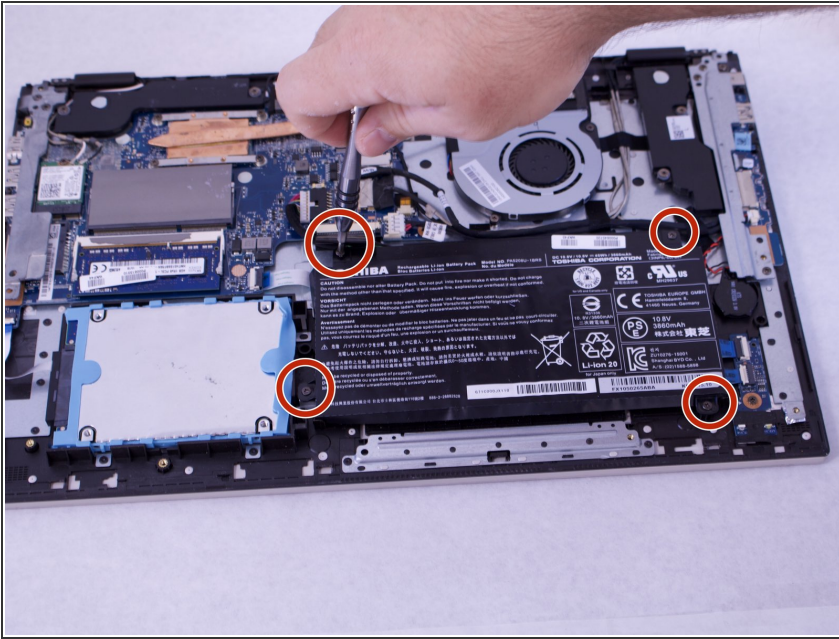
Step 4



⚠ Before touching any component inside your device, ensure you are properly grounded with an anti-static band.

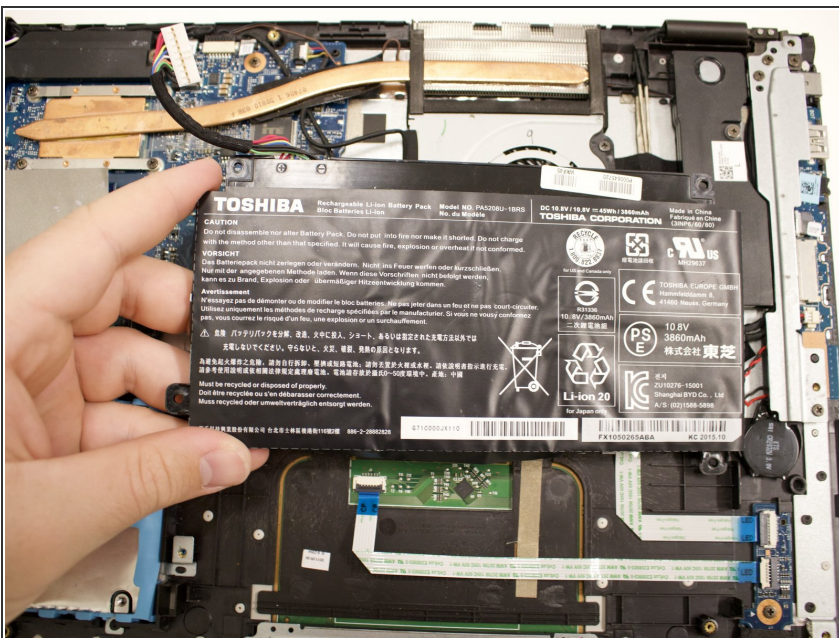
- Disconnect the battery connector cable from the motherboard.

Step 5



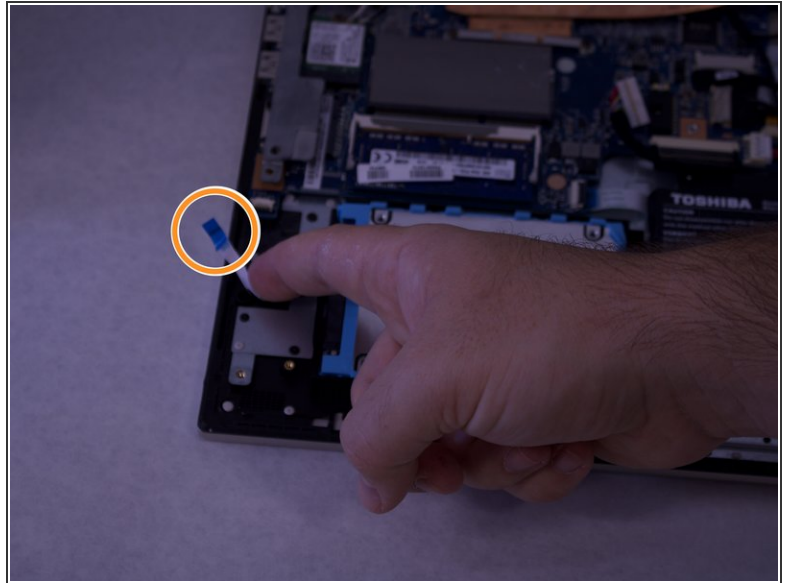
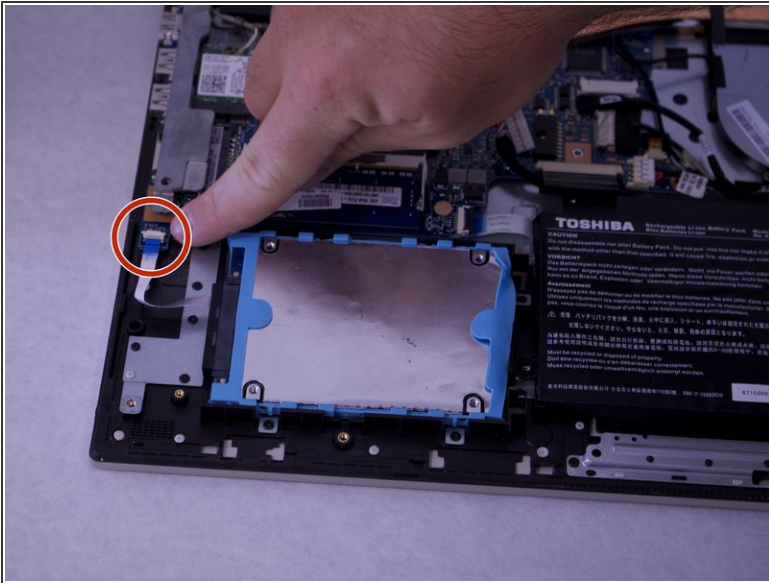
- Using a Phillip's #00 screwdriver, remove the four 7.0 mm screws that secure the battery to the motherboard.

Step 6



- Lift the battery from the motherboard.

Step 7 — Hard Drive



Before touching any component inside your device, ensure you are properly grounded with an anti-static band.

- Flip the white part of the hard drive cable connector up.
- Gently pull the cable out.

Step 8



- Lift the hard drive from the device.

Step 9



- After removing the hard drive, remove the connection cable.
- ⓘ Set the connection cable aside for use with your replacement hard drive.

Step 10



- Remove the protective blue rubber caging from the hard drive.
- ☑ Be sure not to damage the blue rubber caging during removal. This protective caging prevents your hard drive from moving freely inside your device, and will be needed for reassembly.

To reassemble your device, follow these instructions in reverse order.