



Toshiba Satellite L55t-B5271 Cooling Fan Replacement with Heat Sink

If your laptop is overheating or your cooling fan is malfunctioning, follow these guide steps to repair it.

Written By: Noelle Dulude



This document was generated on 2019-10-27 02:10:11 PM (MST).

INTRODUCTION

This guide will help in the replacement of a broken cooling fan with heat sink in your laptop. The purpose of the fan is to pull cool air in to prevent overheating in the laptop. To fix this broken part, this guide will instruct you how to replace the cooling fan by removing the lower cover to access it.



TOOLS:

- [iFixit Opening Tools](#) (1)
- [Anti-Static Wrist Strap](#) (1)
- [Phillips #00 Screwdriver](#) (1)
- [Heavy-Duty Spudger](#) (1)
- [Tweezers](#) (1)



PARTS:

- [Toshiba Satellite L55t-B5271 Cooling Fan](#) (1)

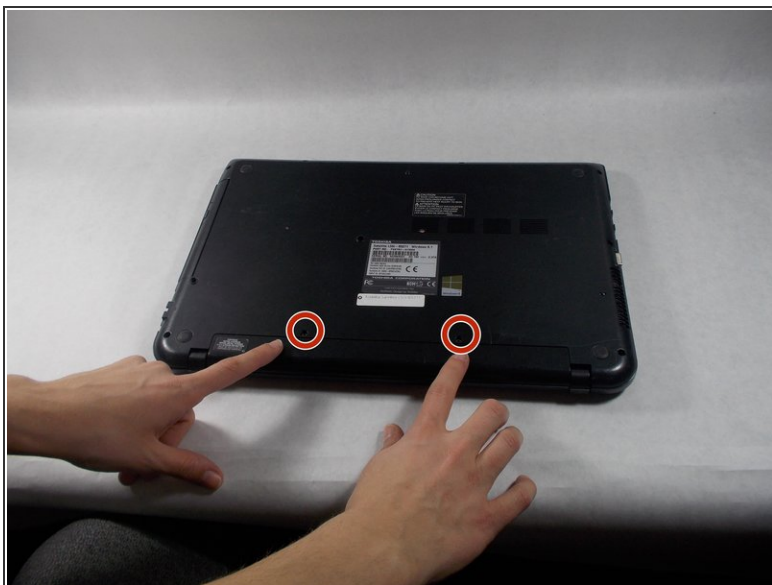
Step 1 — Battery



i Make sure you turn the laptop off first.

- Close the laptop lid and flip it over so that Toshiba logo is facing down.

Step 2



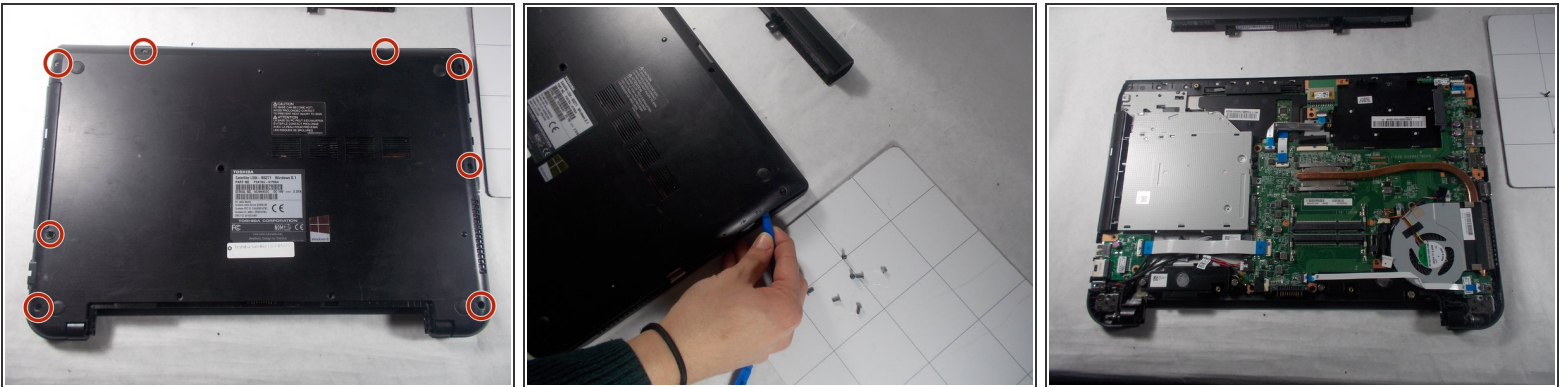
- Remove the two 6.5 mm Phillips head screws indicated using a Phillips #00 screw driver.

Step 3



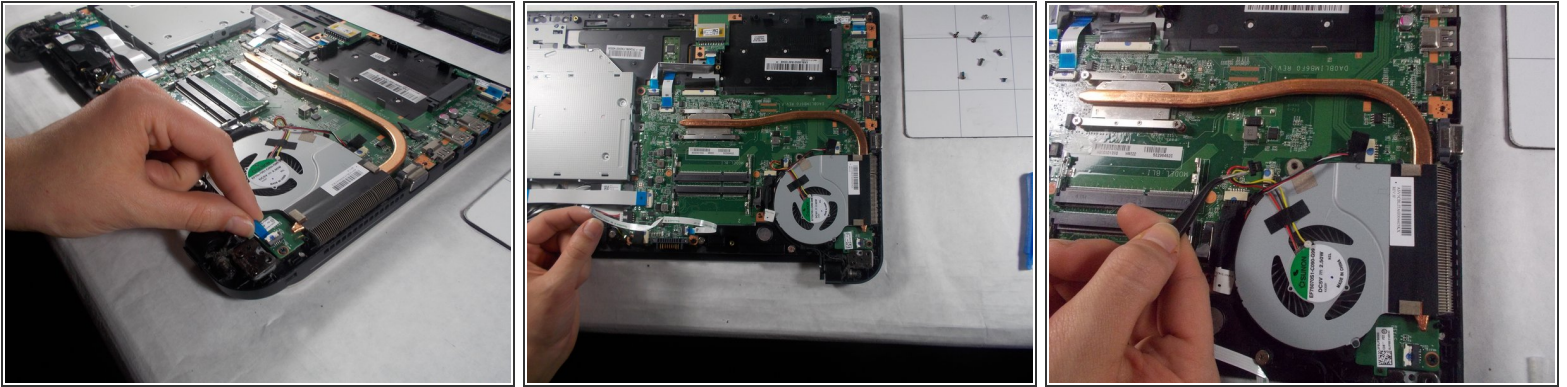
- Once the screws are removed, slide the battery pack out of the computer.

Step 4 — Back Panel



- Remove all 6.5 mm Philips head screws on the back cover of the laptop with a Philips #00 screwdriver.
 - Use the plastic opening tool to remove the back cover from the laptop.
- ⚠ Be aware that static discharge can cause damage to sensitive electrical components within the computer. To avoid this you can wear an anti-static wrist strap.

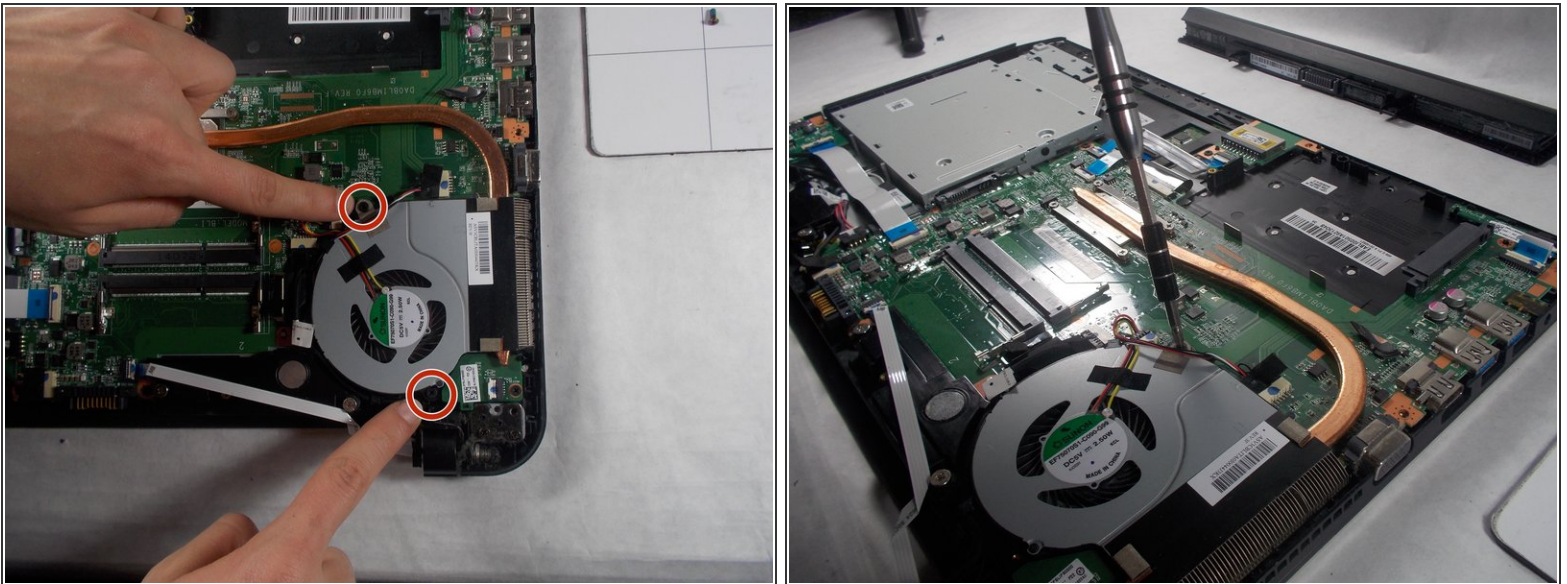
Step 5 — Cooling Fan with Heat Sink



i The ribbon and wire must be moved out of the way of the fan.

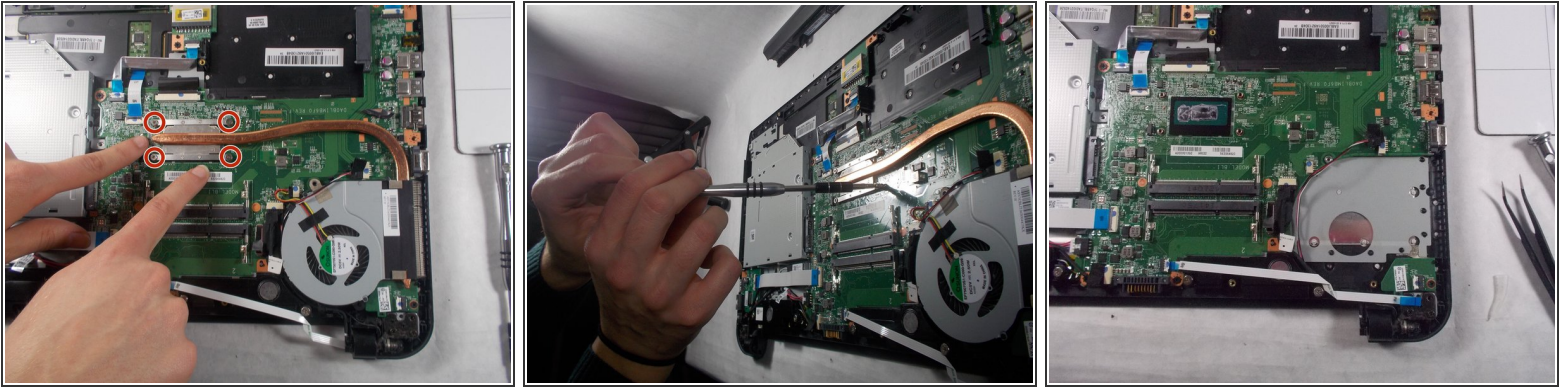
- Using a black tweezer tool, lift the tab holding the ribbon in place and then gently pull it out.
- Using the same tweezer tool, again lift the tab holding the wires in place and gently pull them out.

Step 6



- Unscrew the two 3mm Phillips head screws on each fan using the Phillips #00 screwdriver.

Step 7



- Unscrew the four, 3mm Phillips head screws holding the last piece to the laptop using a Phillips #00 screwdriver.
- Gently pull the cooling fan with heat sink off the laptop and set aside.

To reassemble your device, follow these instructions in reverse order.