



Toshiba Satellite L55t-B5271 Screen Replacement

With this guide, you will be able to disconnect the screen from the laptop and replace it

Written By: Carson Longendorfer



INTRODUCTION

This guide will assist you in removing the display of your device. You'll need to be extra careful when removing the glass screen from your device.



TOOLS:

- [Anti-Static Wrist Strap](#) (1)
- [Phillips #00 Screwdriver](#) (1)
- [Phillips #0 Screwdriver](#) (1)
- [Heavy-Duty Spudger](#) (1)
- [iFixit Opening Tools](#) (1)



PARTS:

- [Toshiba Satellite L55t-B5271 Screen](#) (1)
- [Toshiba Satellite L55t-B5271 LED LCD Display](#) (1)

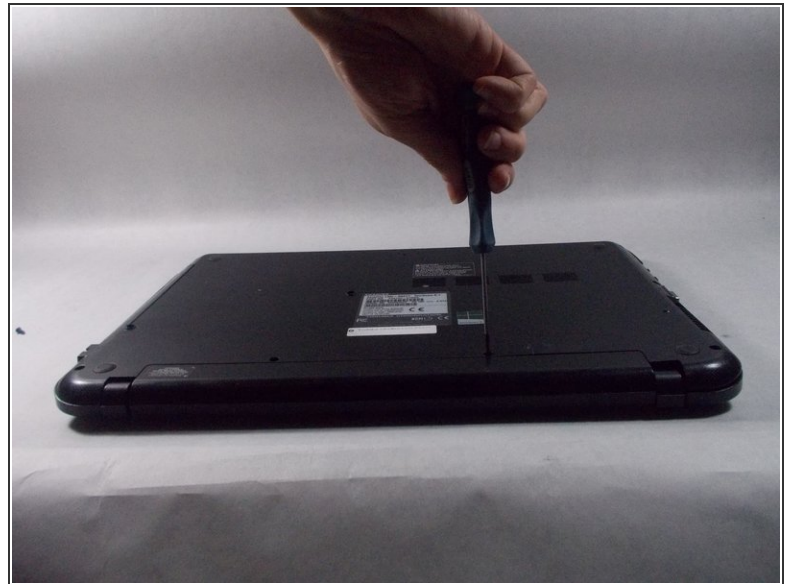
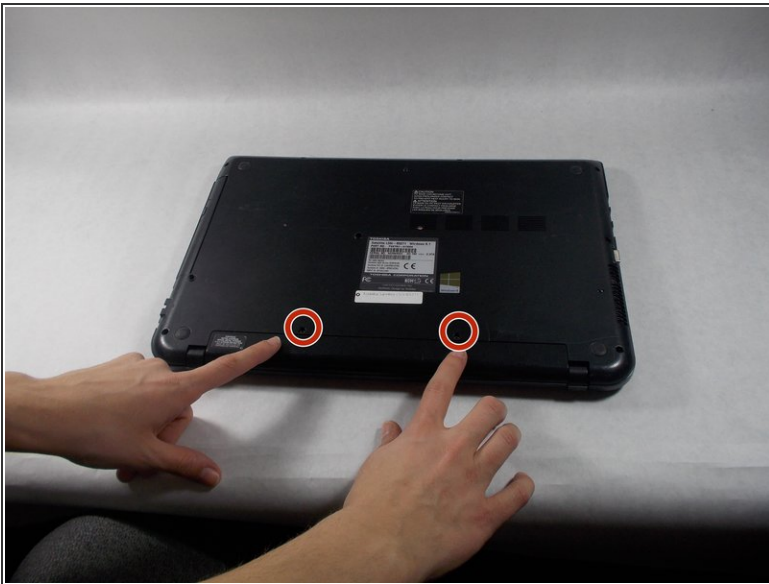
Step 1 — Battery



i Make sure you turn the laptop off first.

- Close the laptop lid and flip it over so that Toshiba logo is facing down.

Step 2



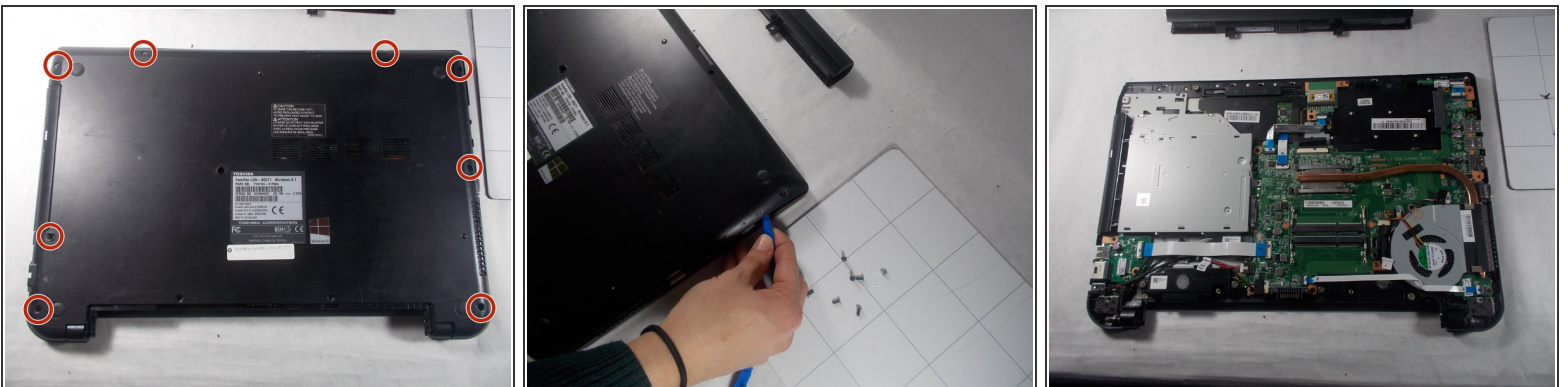
- Remove the two 6.5 mm Phillips head screws indicated using a Phillips #00 screw driver.

Step 3



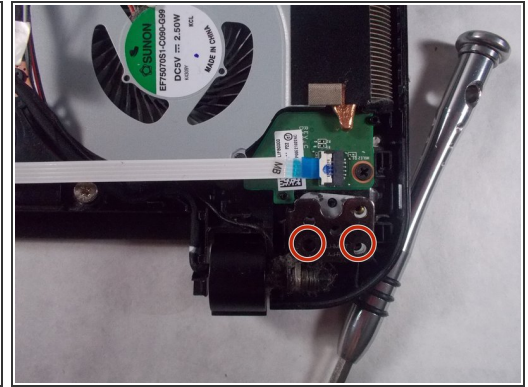
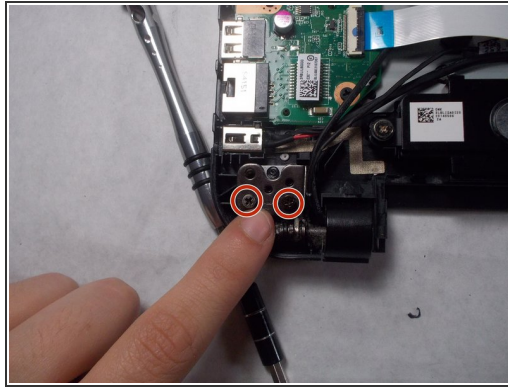
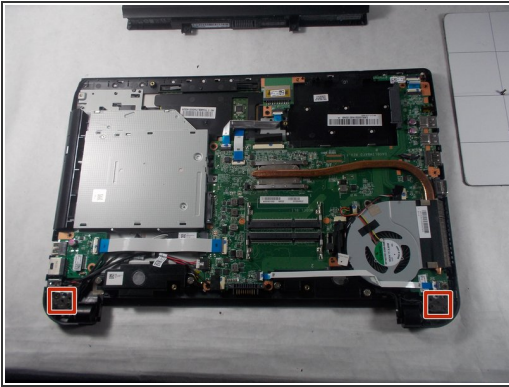
- Once the screws are removed, slide the battery pack out of the computer.

Step 4 — Back Panel



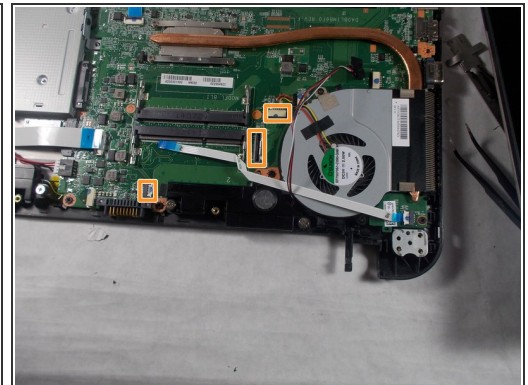
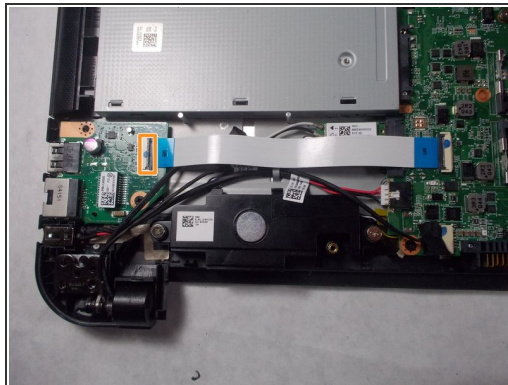
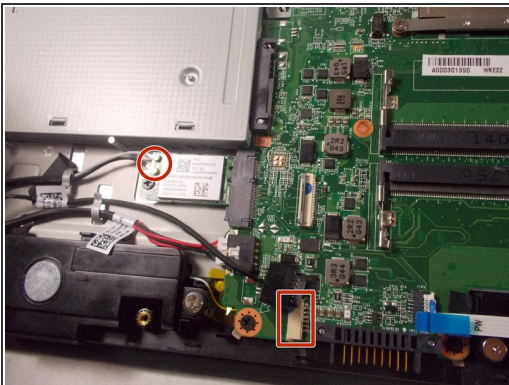
- Remove all 6.5 mm Philips head screws on the back cover of the laptop with a Philips #00 screwdriver.
 - Use the plastic opening tool to remove the back cover from the laptop.
- ⚠ Be aware that static discharge can cause damage to sensitive electrical components within the computer. To avoid this you can wear an anti-static wrist strap.

Step 5 — Screen



- Unscrew the four 6mm screws from each of the laptop hinges using a Philips head #00 screwdriver.

Step 6



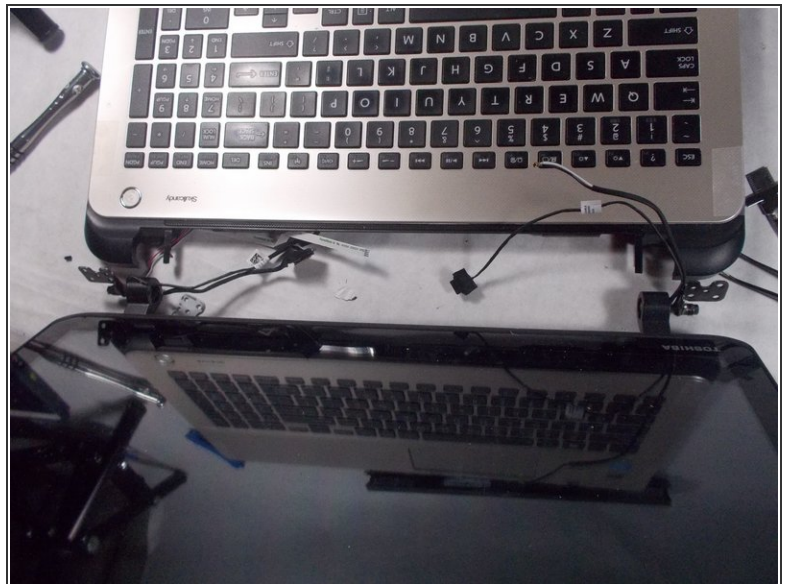
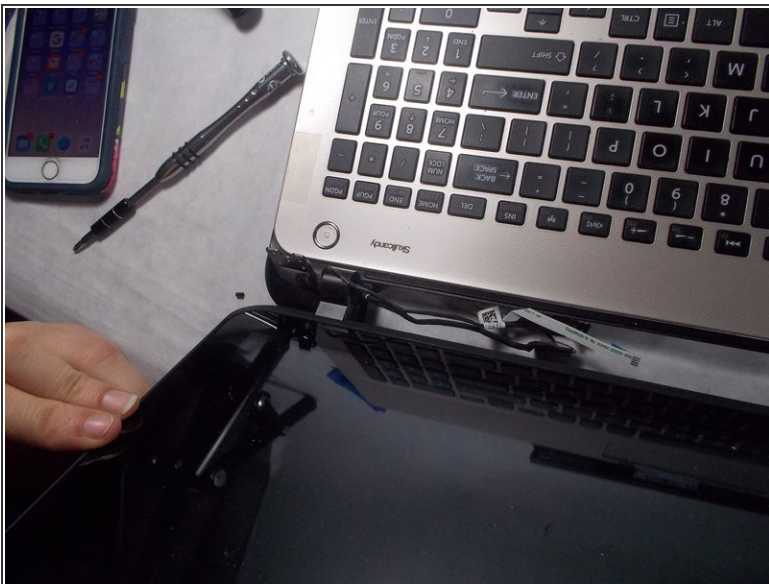
- Disconnect the ribbon marked in red.
- Disconnect all ribbons and cables marked in orange.

Step 7



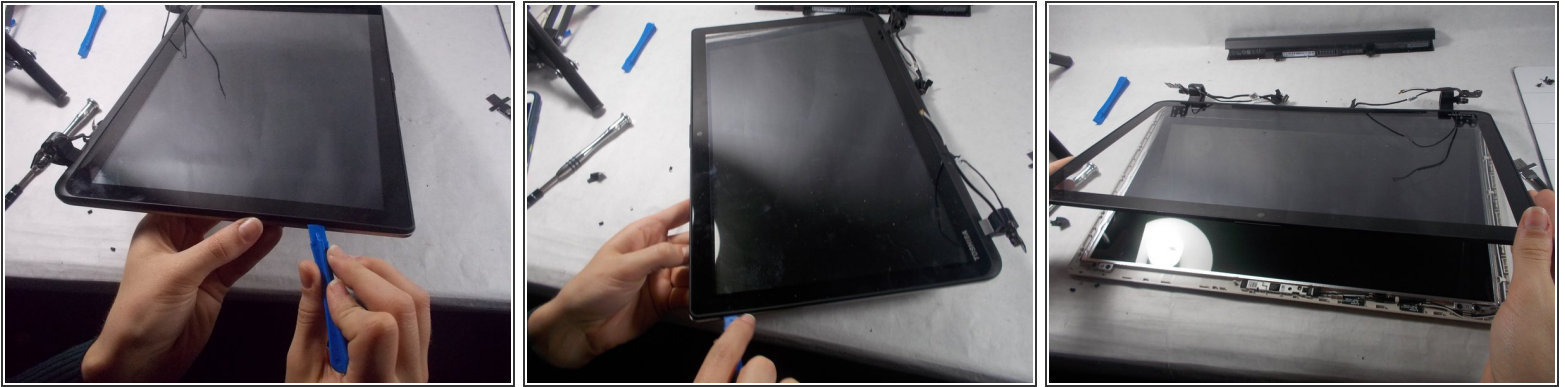
- Flip your laptop back to the front.
- Lift up the screen cover.

Step 8




- Gently pull the screen to disconnect the monitor from the hinges.

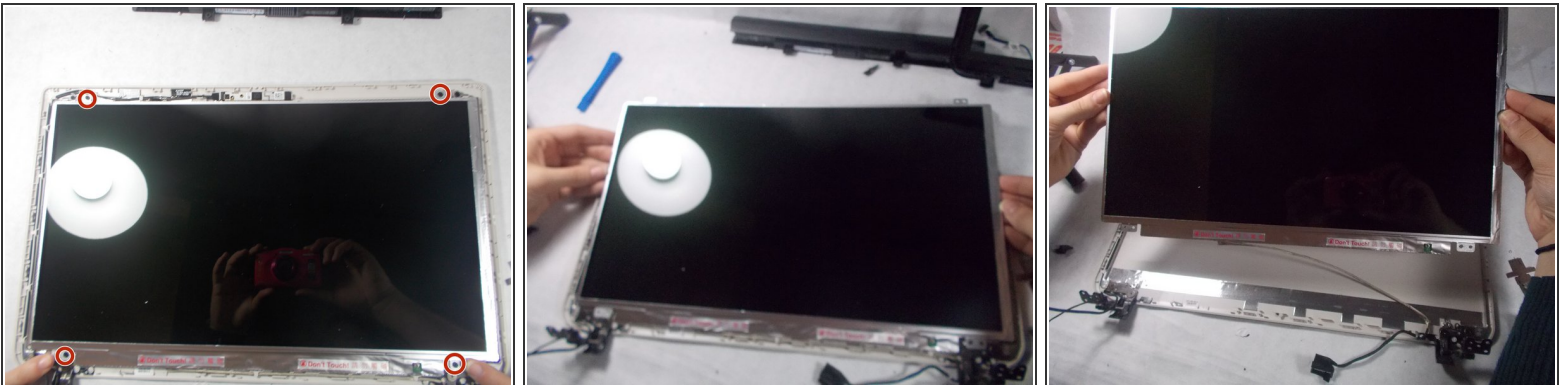
Step 9



- Use the plastic opening tool to pry the plastic covering off of the monitor.

 Be careful not to break the glass, as this can cause injury.

Step 10



- Remove the four 3mm Phillips head screws with a Phillips #00 screwdriver.
- Gently remove the screen from the device.

To reassemble your device, follow these instructions in reverse order.