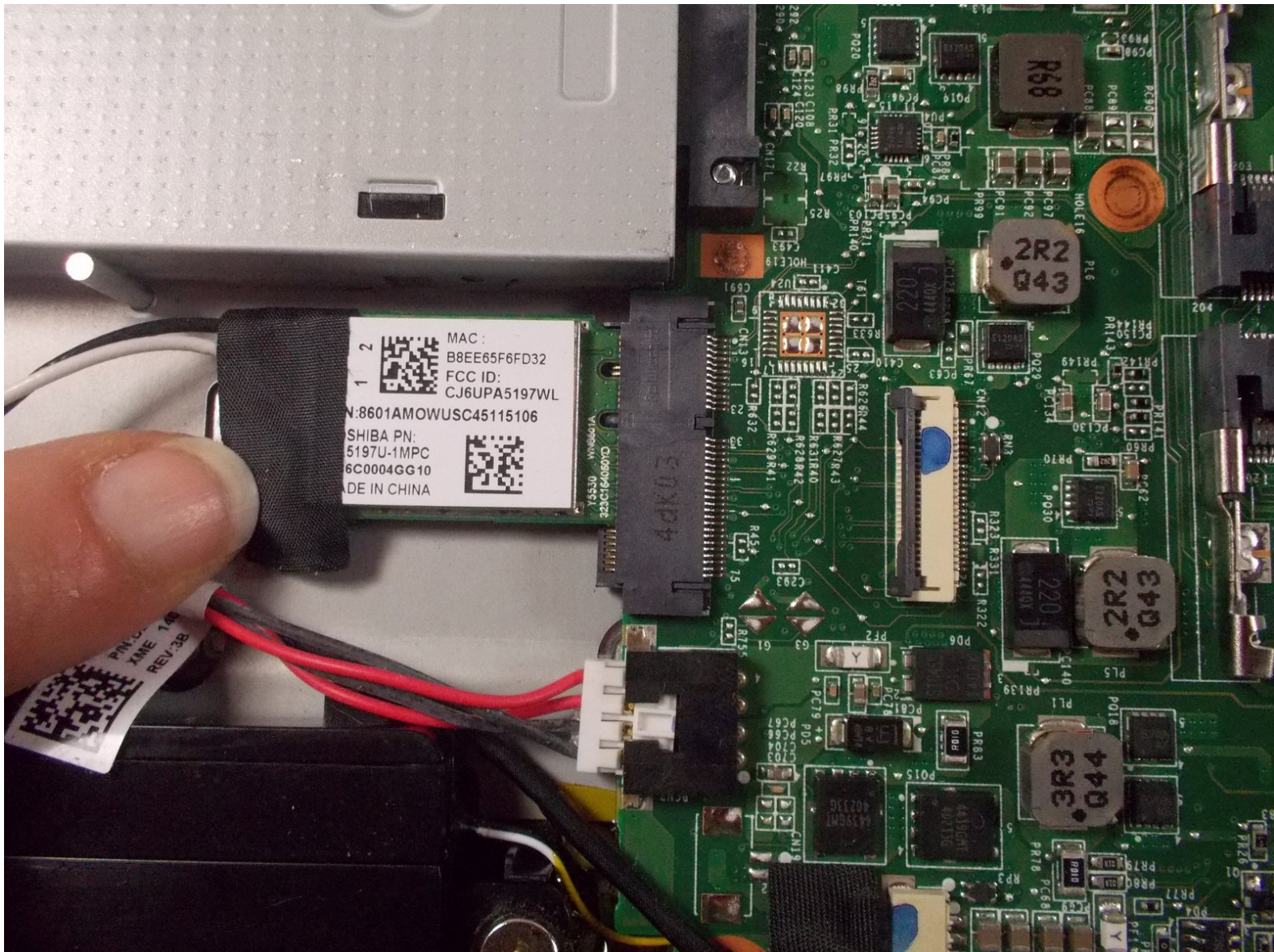




# Toshiba Satellite L55t-B5271 Wireless Card Replacement

To replace a faulty wireless card, follow these simple instructions.

Written By: Noelle Dulude



## INTRODUCTION

This guide will help you replace the wireless card if it is not functioning adequately. It will instruct you to remove the cover to the wifi to gain access to the card and then replace it.



### TOOLS:

- [iFixit Opening Tools](#) (1)
- [Anti-Static Wrist Strap](#) (1)
- [Phillips #00 Screwdriver](#) (1)
- [Heavy-Duty Spudger](#) (1)
- [Tweezers](#) (1)



### PARTS:

- [Toshiba Satellite L55t-B5271 Wireless Card](#) (1)



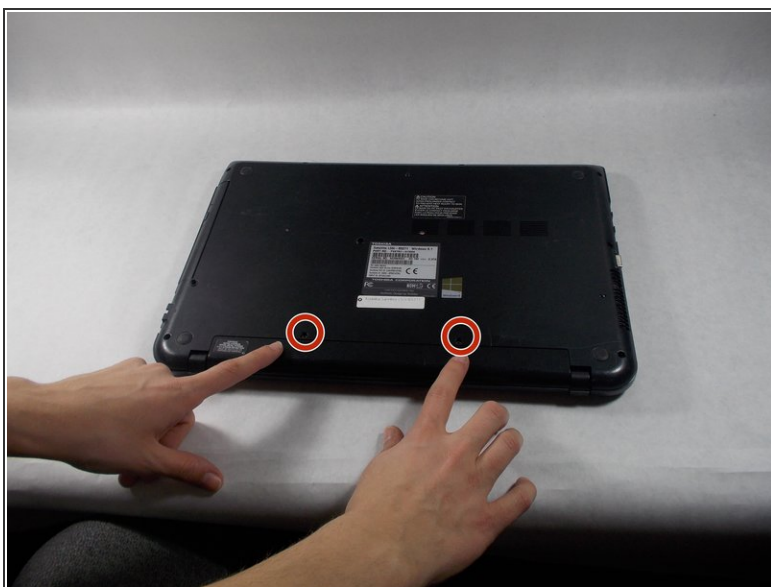
## Step 1 — Battery



**i** Make sure you turn the laptop off first.

- Close the laptop lid and flip it over so that Toshiba logo is facing down.

## Step 2



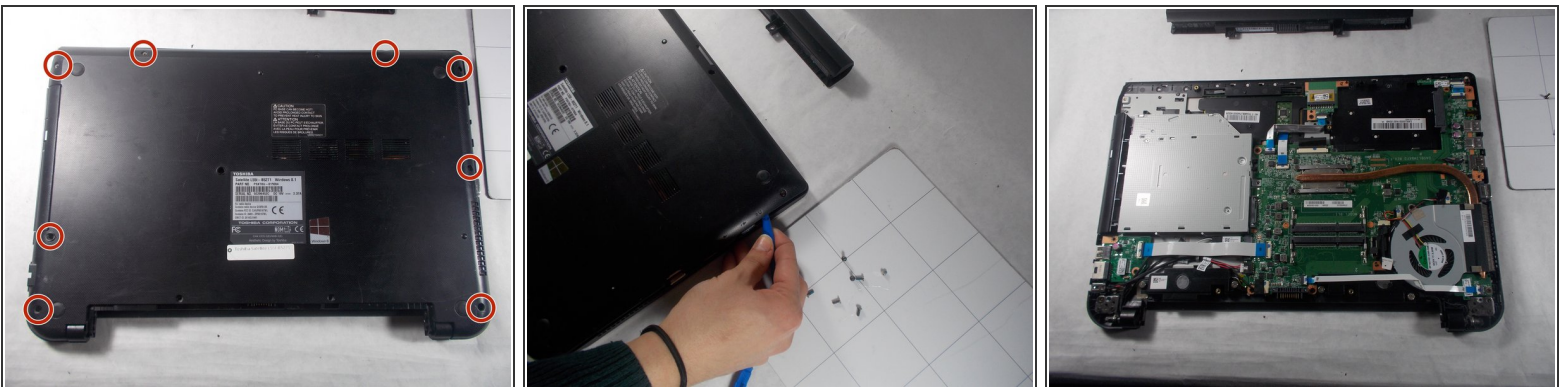
- Remove the two 6.5 mm Phillips head screws indicated using a Phillips #00 screw driver.

### Step 3



- Once the screws are removed, slide the battery pack out of the computer.

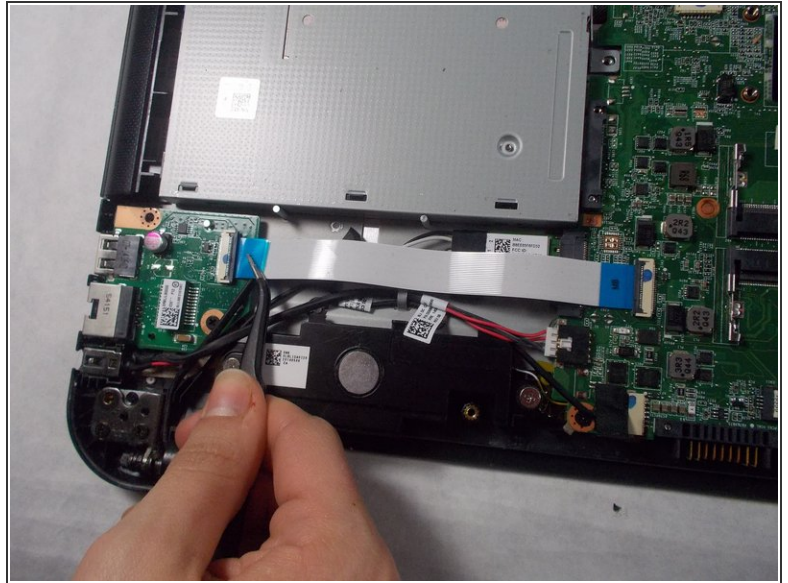
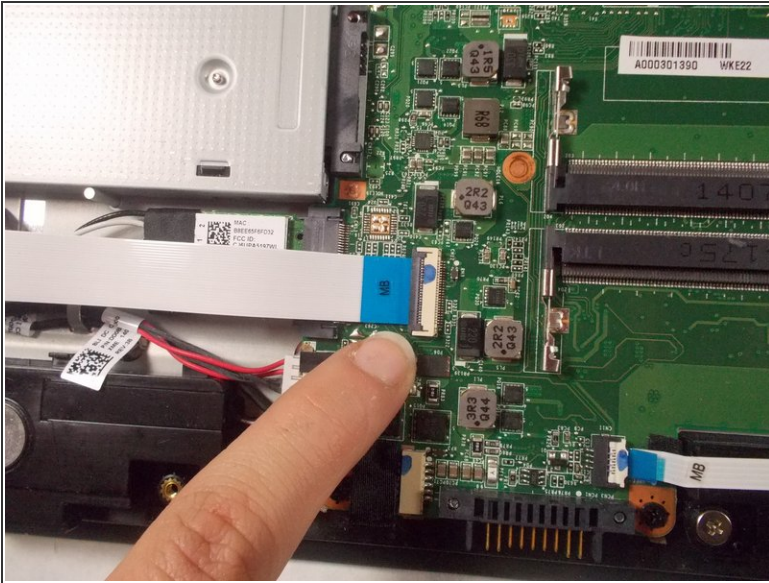
### Step 4 — Back Panel



- Remove all 6.5 mm Philips head screws on the back cover of the laptop with a Philips #00 screwdriver.
  - Use the plastic opening tool to remove the back cover from the laptop.
- ⚠ Be aware that static discharge can cause damage to sensitive electrical components within the computer. To avoid this you can wear an anti-static wrist strap.

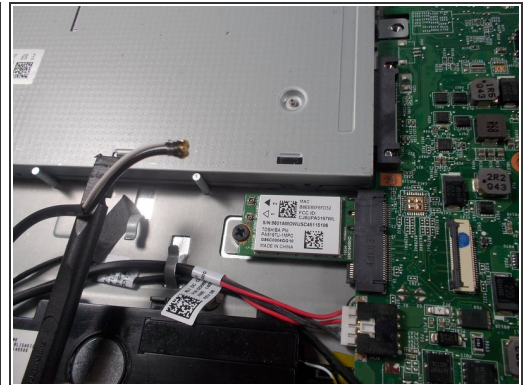
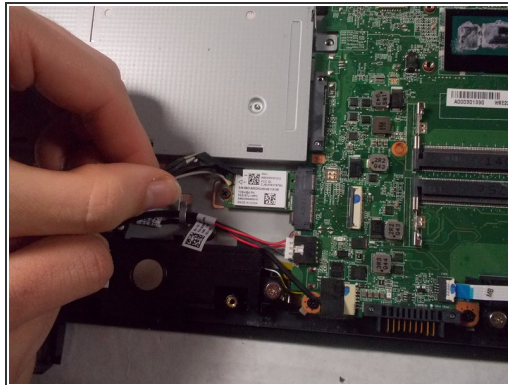
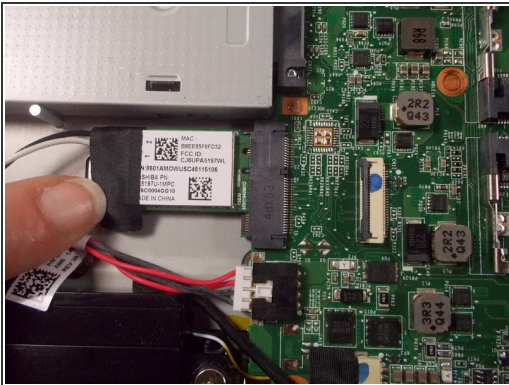


## Step 5 — Wireless Card



- Remove the ribbon by flipping up the tabs and using the black tweezers to gently pull the ribbon out from both ends.

## Step 6



- Remove the tape from the card.
- Disconnect the wires using the #4 black spudger tool.

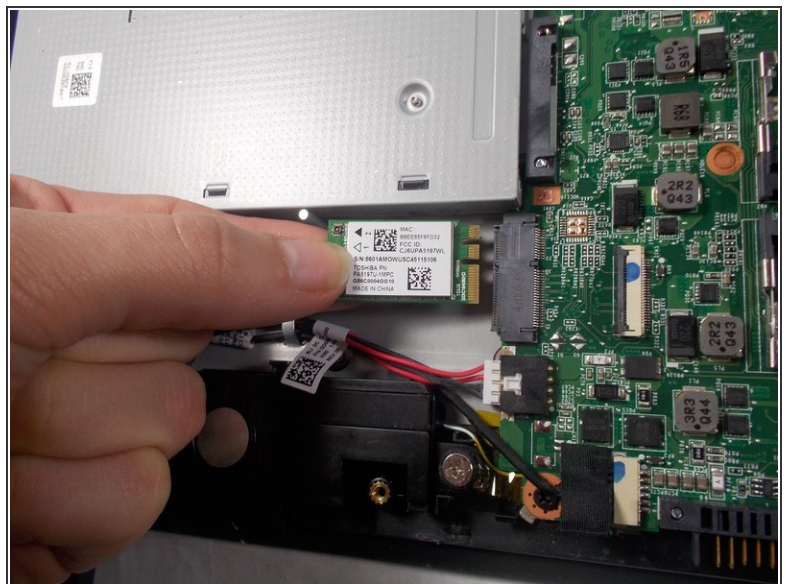


## Step 7



- Remove the 3mm Phillips head screw with a Phillips #00 screwdriver.

## Step 8



- Pull up on the wireless card and remove it from the device.

To reassemble your device, follow these instructions in reverse order.