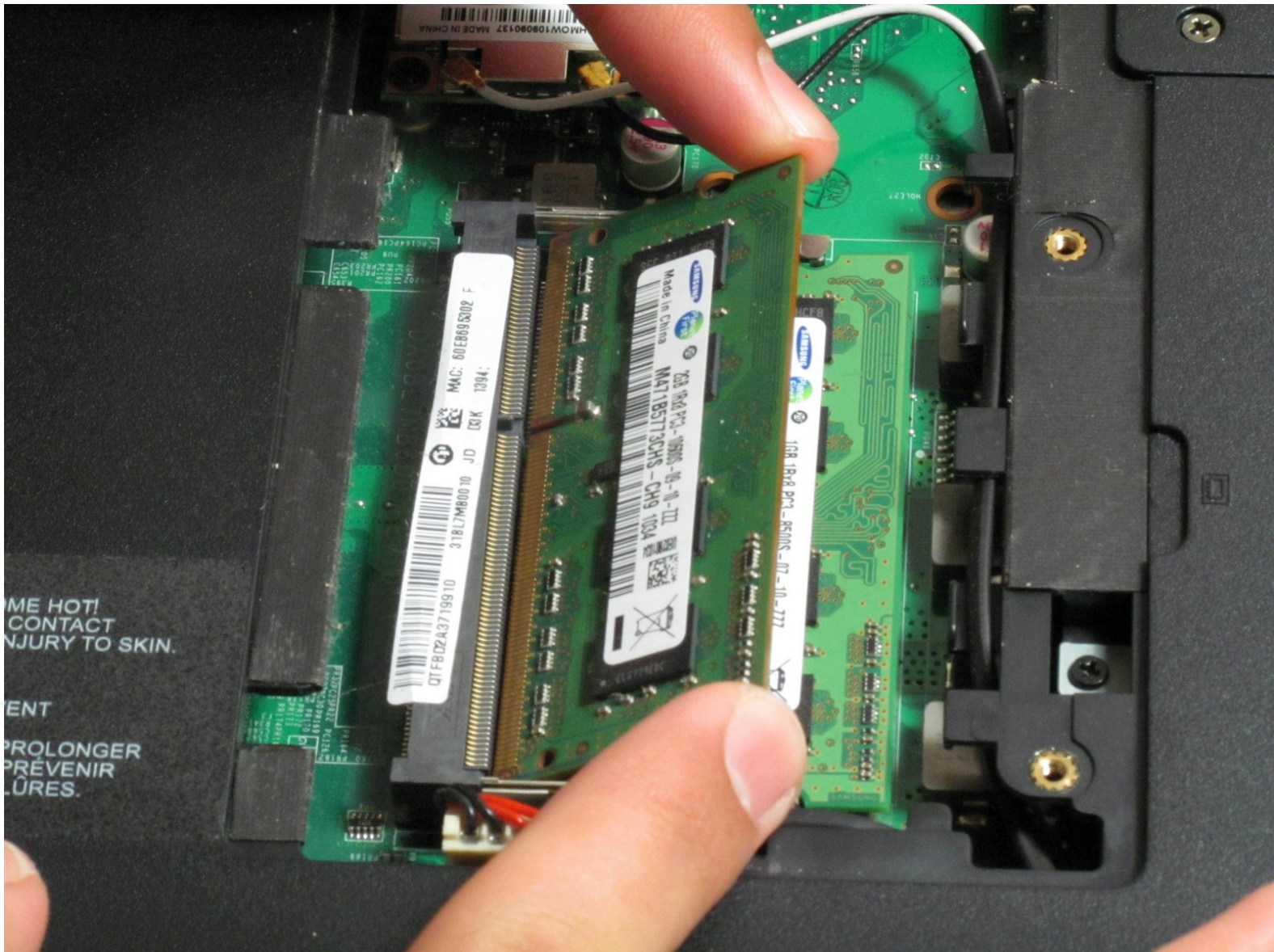




# Toshiba Satellite L655D-S5095 RAM Replacement

Replace the RAM in your laptop.

Written By: Jerry Wakai



## INTRODUCTION

This guide replaces the RAM in your laptop and is fairly simple to complete.



### TOOLS:

- [Phillips #1 Screwdriver](#) (1)



### PARTS:

- [PC3-10600 2 GB RAM Chip](#) (1)
- [PC3-10600 4 GB RAM Chip](#) (1)

## Step 1 — RAM



- Unscrew the three 4.6 mm screws holding the panel using a #1 size Phillips head screwdriver. The panel is centered on the bottom of the laptop.

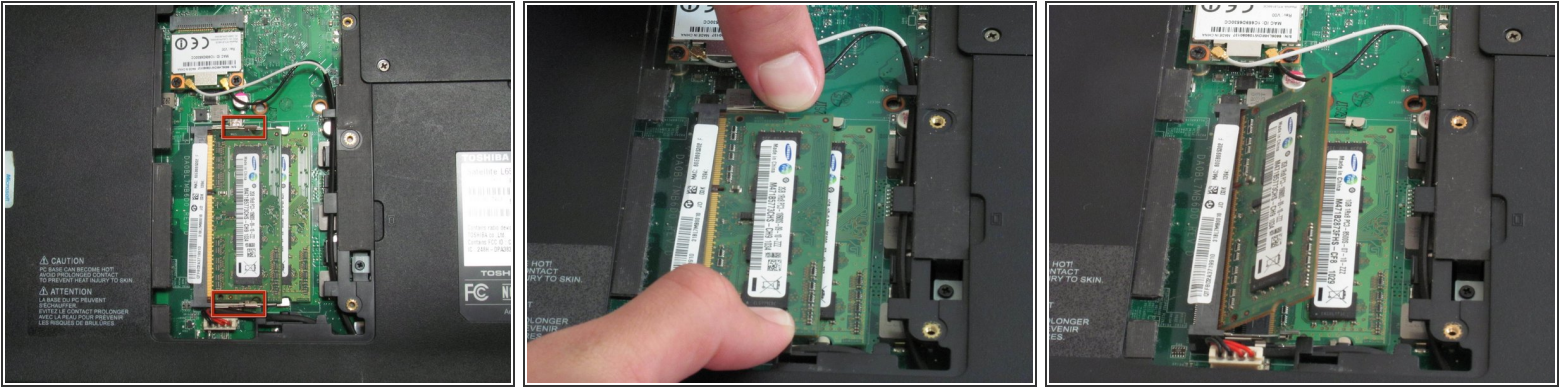
## Step 2



- Remove the cover, firmly lifting from the indent. It is recommended that you leave the screws in the panel.



## Step 3



- Push the two tabs outwards, away from the RAM. The RAM should spring up.

## Step 4



- Pull the top RAM stick out gently.
- Repeat steps 3 and 4 for the bottom RAM stick.
- When installing the new RAM, line up the notches in the RAM's contacts and insert it at the same angle you removed it.

To reassemble your device, follow these instructions in reverse order.