



# Toshiba Satellite L655D-S5095 Screen Replacement

Replacing the screen is an intermediate level repair. Carefully follow the instructions and keep an eye out for placement of important connections stressed in the photos.

Written By: Christopher Camara





## TOOLS:

- [Phillips #1 Screwdriver](#) (1)
  - [iFixit Opening Tools](#) (1)
-

## Step 1 — Battery



- Locate the battery locks on the bottom of the laptop.
- Slide the right lock outwards, until it locks into place.
- Slide and hold the left lock outwards and hold it in place.

## Step 2



- While holding the lock in place, slide the battery out towards you.

## Step 3 — Keyboard



- Using a #1 Phillips screwdriver, remove the 5.8 mm screw in the battery slot.

## Step 4



- Use a plastic opening tool to pry off the plastic panel above the keyboard.



## Step 5



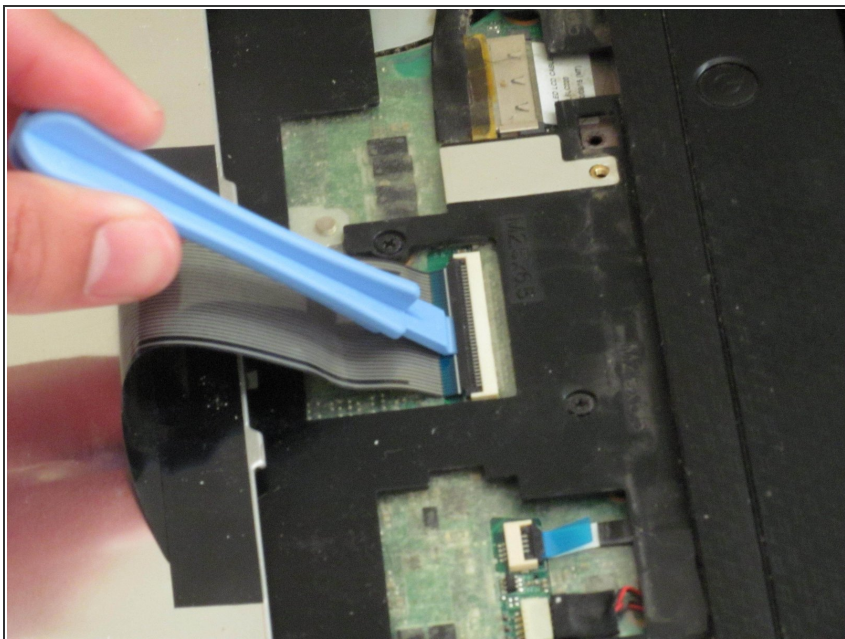
- Unscrew the four 3.7 mm screws at the top of the keyboard using a #1 Phillips screwdriver.

## Step 6



- Slowly lift the keyboard out, up and towards the screen.
- ⚠ Do not try to remove the keyboard completely because it is still attached to the motherboard.

## Step 7



- Using a plastic opening tool, flip the ZIF connector up to release the ribbon and the keyboard.

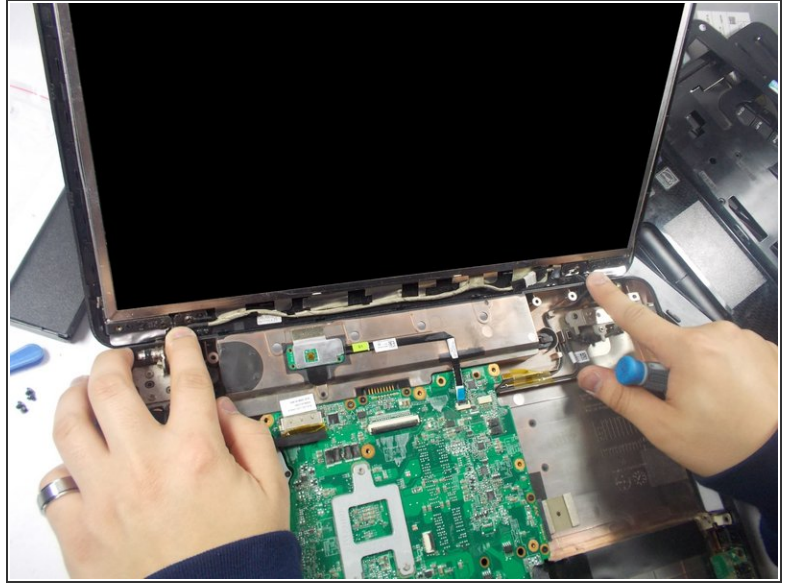
## Step 8 — Screen



- Remove stickers from four corners of laptop.
- Remove screws underneath stickers.

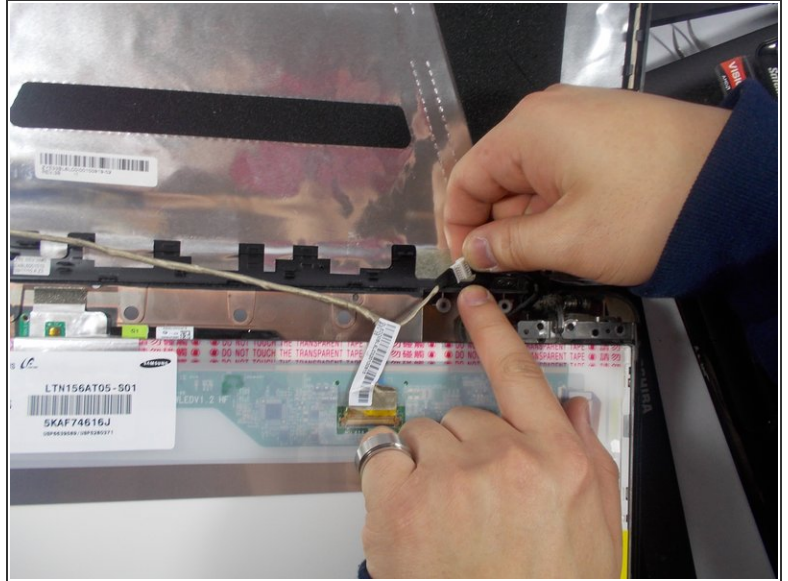
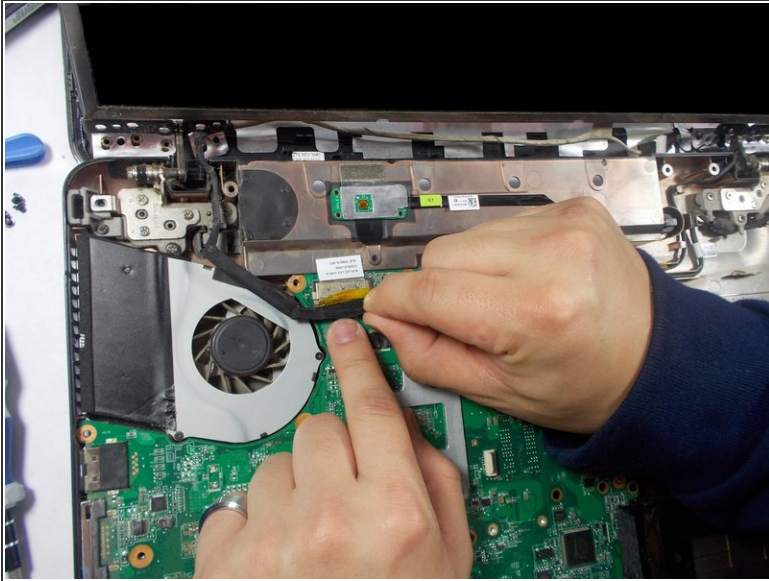


## Step 9



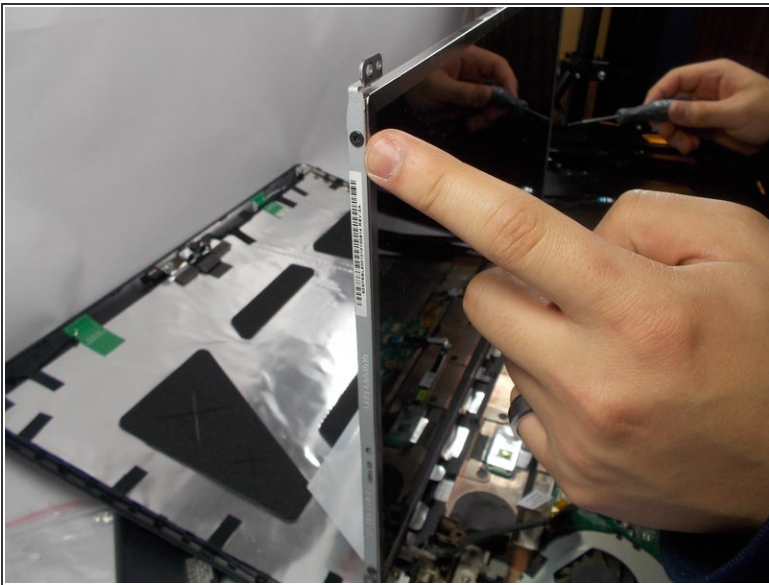
- Use plastic opening tool to pry the hinges off.
- Remove the screen cover.
- Unscrew the six screws on the bottom of the screen near the top of the hinges.

## Step 10



- Remove cable located next to the fan.
- Fold down screen without screen back cover to remove cable as shown.

## Step 11



- Unscrew both screws on each side of the screen.
- Remove the screen.



To reassemble your device, follow these instructions in reverse order.