



# Toshiba Satellite L670 HDD Replacement

Replace the HDD with an SSD

Written By: levi lenaers



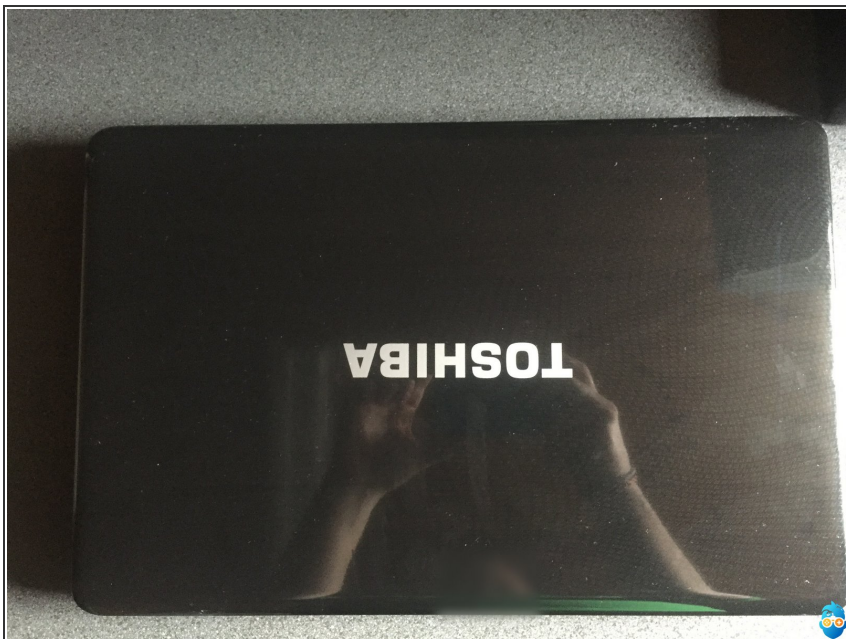
**TOOLS:**

- [Phillips #1 Screwdriver](#) (1)

**PARTS:**

- [New Item](#) (1)

## Step 1 — Battery



- Power down the computer and unplug the power adapter.

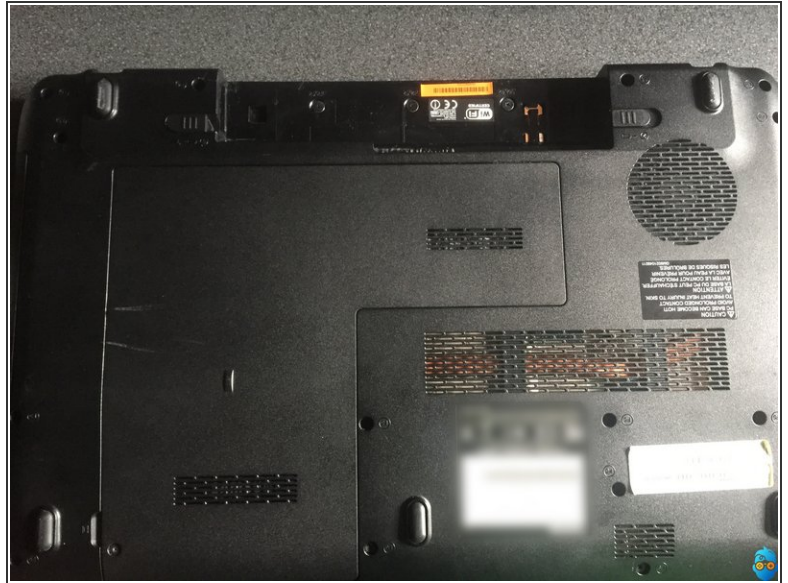
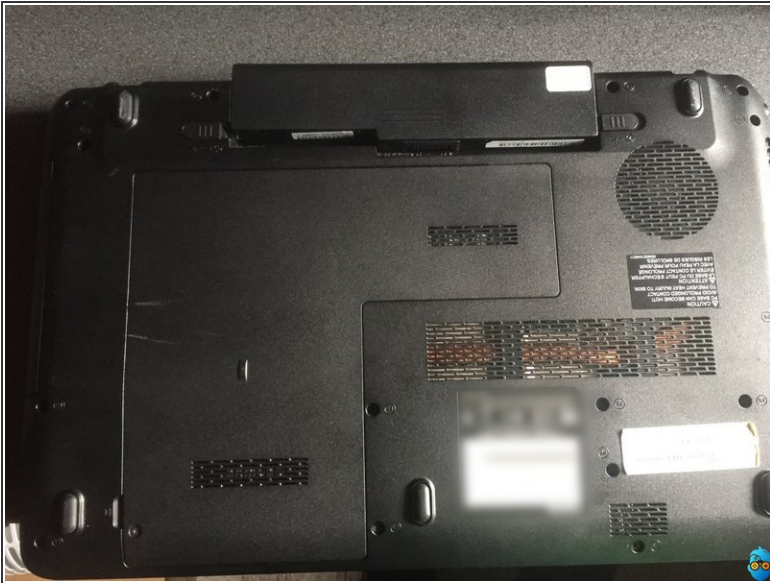
## Step 2 — Flip the Laptop



- Flip the laptop upside down. Locate the two latches on both sides of the battery.



### Step 3 — Take out the Battery



- Remove Battery

### Step 4 — Back Panel Removal



- Back Panel Removal



## Step 5 — Hard Drive



- Slide the hard drive to the left, using the silver tab.
- Pull up the silver tab, removing the hard drive from the slot.

## Step 6 — Remove Silver cover from HDD



- Remove the 4 screws from the HDD



## Step 7 — Take your new SSD



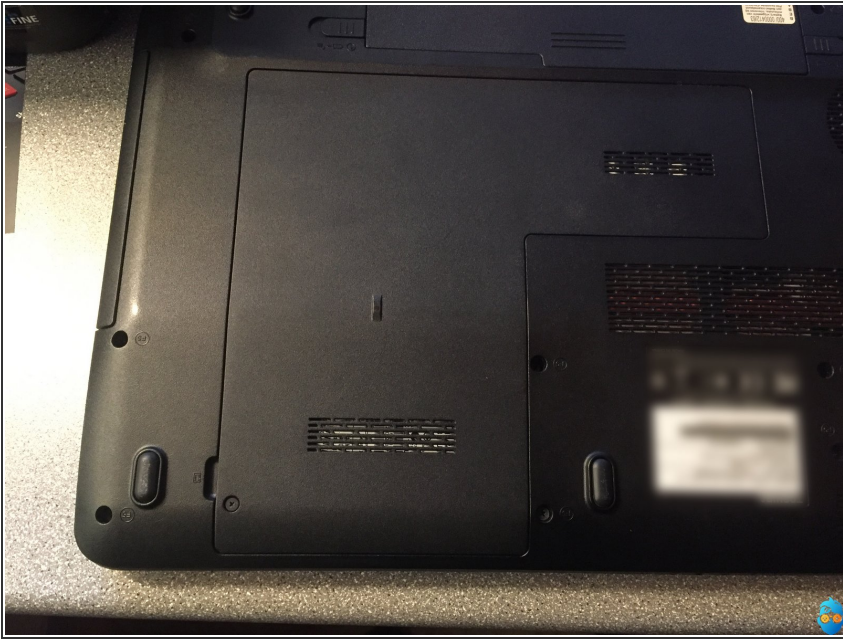
- Take your new SSD
- Place the SDD in the silver cover
- Place the 4 screws and secure the silver cover to the SSD

## Step 8 — Place the SSD



- Place the SSD in the Laptop
- Push the ssd to the right into the socket

## Step 9



- Close up the laptop
- Put your battery back in

To reassemble the device, follow these instructions in reverse order.