



# Toshiba Satellite L675D-S7015 Keyboard Replacement

This guide will show you how to properly take out and replace the keyboard to your Toshiba Satellite L675D-S7015.

Written By: Brendon Kidwell



---

## INTRODUCTION

Before beginning this guide, make sure that you take a look at the keyboard section of this [troubleshooting guide](#) to make sure you have a proper diagnosis of your keyboard. After determining that you need to replace the keyboard, please follow these steps carefully making sure you have the required equipment before proceeding with this repair guide.

---



### TOOLS:

- [Phillips #1 Screwdriver](#) (1)
  - [iFixit Opening Tools](#) (1)
  - [Heavy-Duty Spudger](#) (1)
  - [Metal Spudger](#) (1)
-

## Step 1 — Battery



- Flip the laptop on a scratch free surface, exposing underneath the laptop.
- Identify the unlocking latches denoted by the red circles.

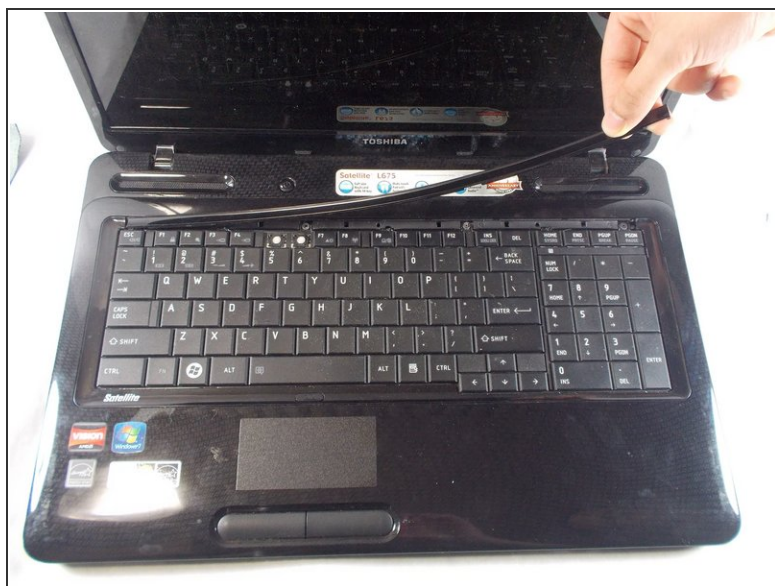
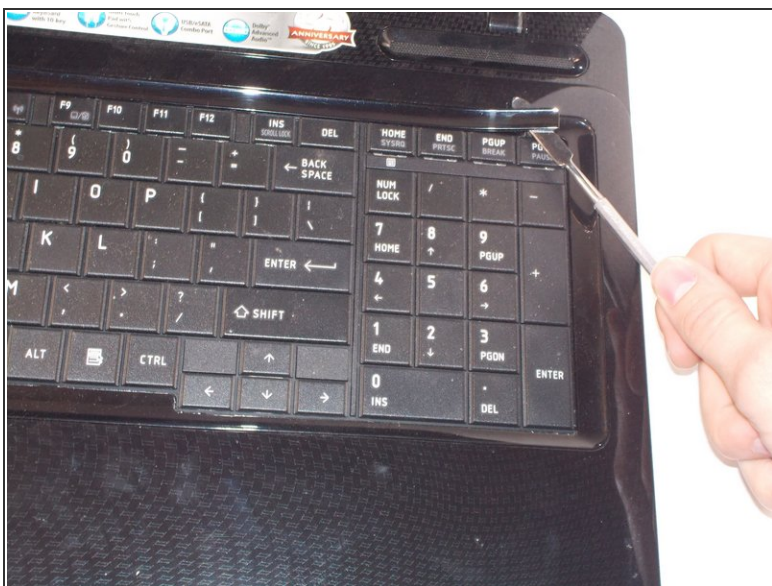
## Step 2



- Simply slide the latches outward to the unlocked position.
- The latches should stay in the unlocked position. If not, hold them in the unlocked position.
- With the latches in the unlocked position, slide the battery out, away from the laptop.

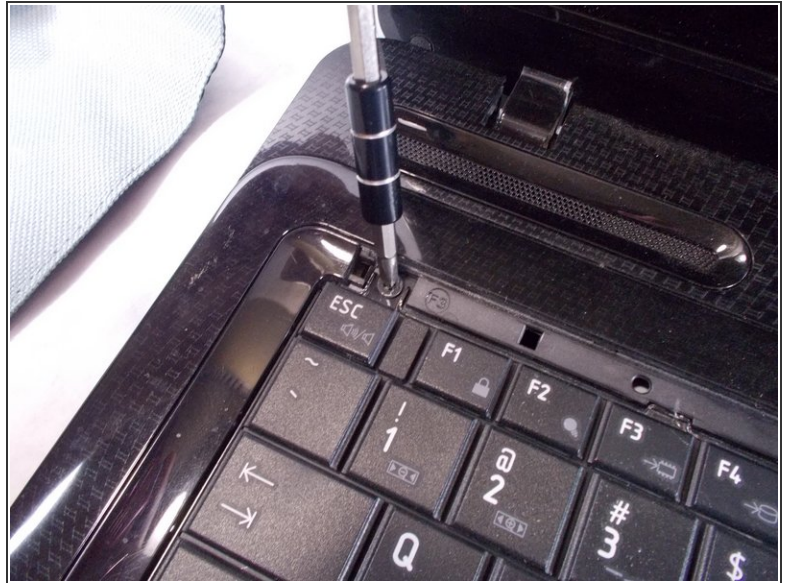
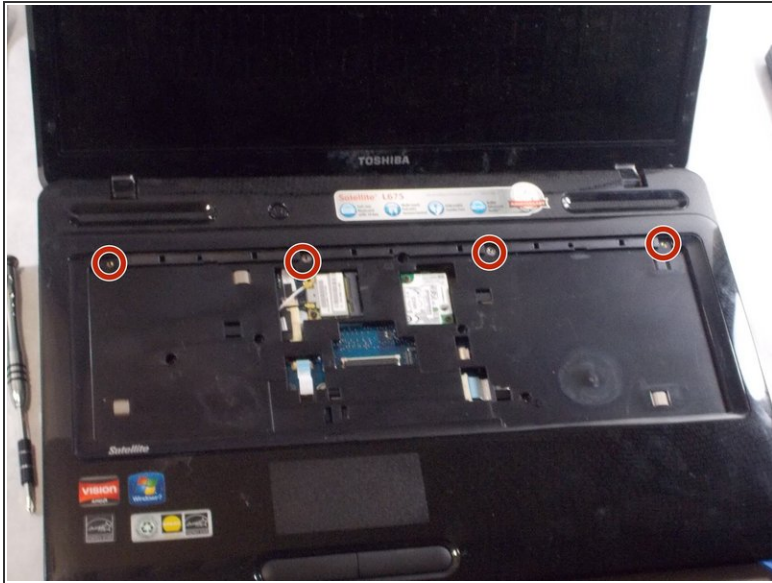


## Step 3 — Keyboard



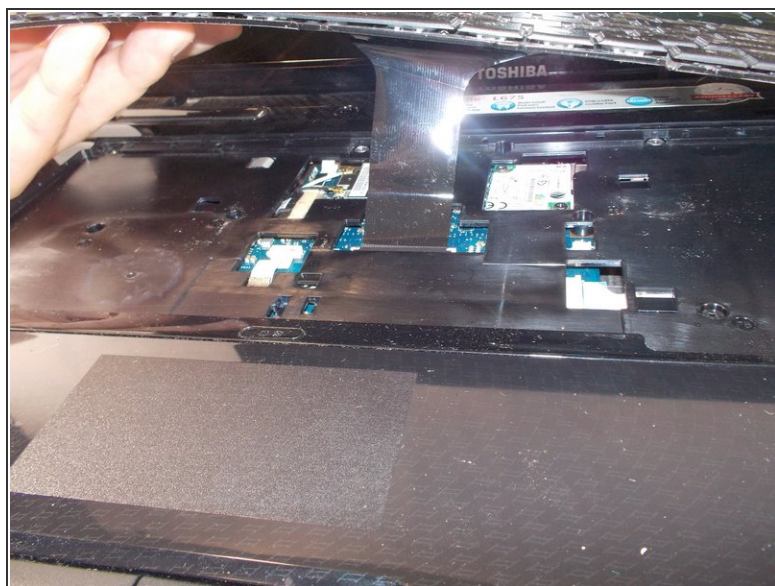
- Use a spudger to pry under the corner of the thin piece of plastic located above the keyboard.
- Once part of the plastic guard is up, continue to pull up gently until the piece pops off of the laptop exposing 4 screws.

## Step 4



- With the screws exposed, grab your Phillips #1 screwdriver and remove the four 4 mm screws.
- ☑ Make sure you do not lose them since you will need them to reinstall your new keyboard.

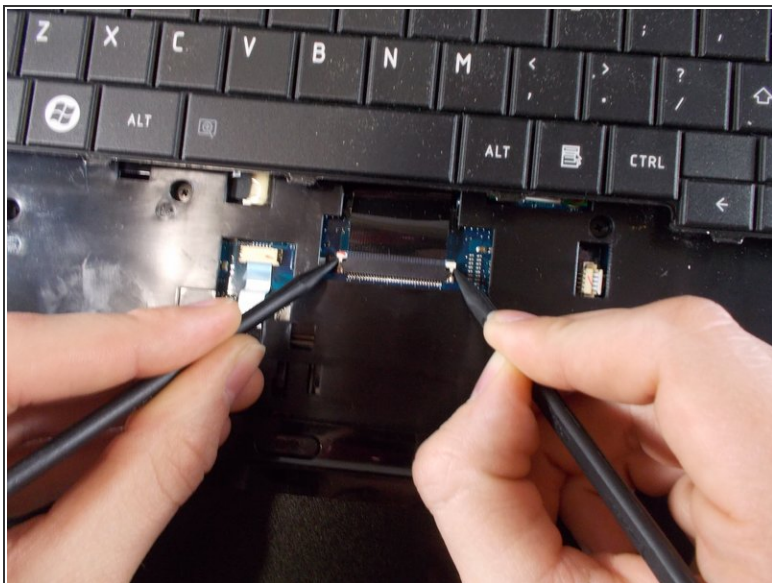
## Step 5



- With the screws removed, you are ready to take out the keyboard. Lift the keyboard from the top and carefully pull the keyboard away from the laptop.
- ⚠ There is a thin connector that wires the keyboard to the motherboard. Pulling on this too hard could cause damage to the clip that will connect your new keyboard to the motherboard and require you to purchase a new one.



## Step 6



- With the connector exposed, use a couple spudgers to hold the two clips in and carefully slide out the ribbon connector.
- Once removed, the keyboard is free to be replaced with a new one.

To reassemble your device, follow these instructions in reverse order.