



# Toshiba Satellite L675D-S7016 RAM

## Replacement

This guide will walk the user through accessing and replacing the RAM.

Written By: Austin Bons



---

## INTRODUCTION

If you find that your computer is responding slow, this guide will show you how to access and remove the RAM.

---



### TOOLS:

- [Phillips #1 Screwdriver](#) (1)
-

## Step 1 — Battery



- Power down the computer and unplug the power adapter.

## Step 2




- Flip the laptop upside down. Locate the two latches on both sides of the battery.

### Step 3



- Slide the latch on the right outwards, releasing the lock. The latch stays unlocked once moved.
- Simultaneously slide the latch on the left outwards while pulling the battery towards you.

 Do not touch the metal connectors on the laptop and the battery.

### Step 4 — Back Panel Removal



- Remove the single captive screw on the back panel with your Phillips #1 screwdriver.

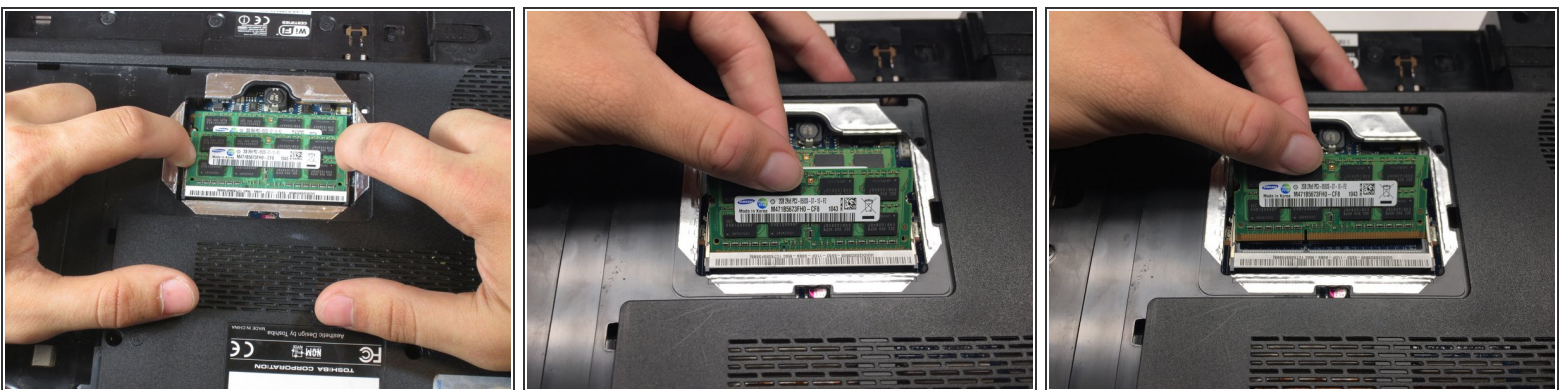


## Step 5



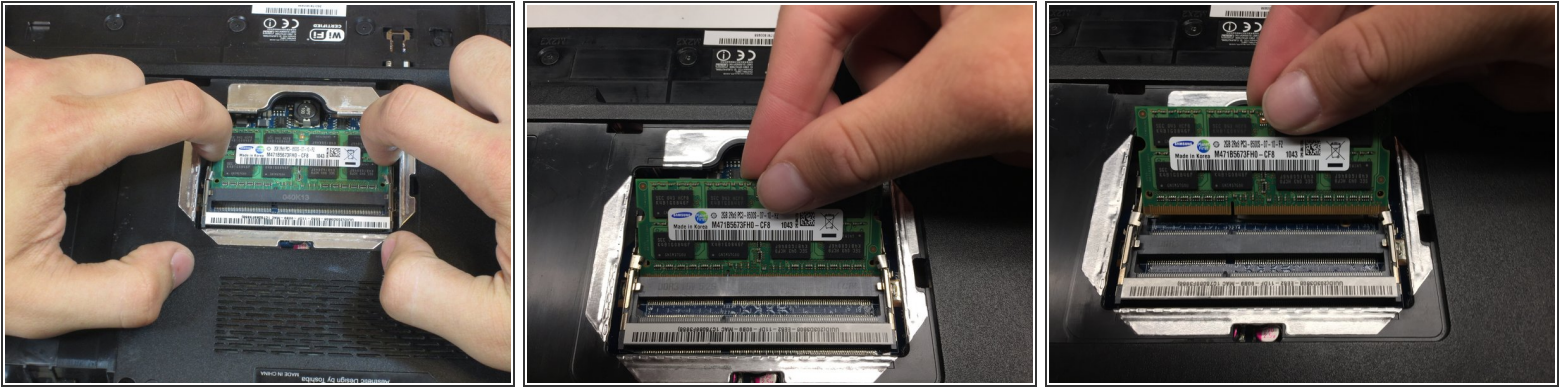
- Pry the removal tab up. You will feel and hear the first clip release, popping up slightly.
- Work your way around the border of the panel, releasing the rest of the clips.
- Once all clips are released, lift the cover up and pull towards you.

## Step 6 — RAM



- Using your fingers, spread the spring tabs holding the top stick of RAM in place.
- Once the tabs are spread apart, the stick of RAM will pop up.
- Remove the first stick of RAM by pulling out along the same angle the RAM stick springs up.

## Step 7



- Repeat the same procedure to remove the second stick of RAM.

To reassemble your device, follow these instructions in reverse order.