



# Toshiba Satellite L675D-S7016 Screen Replacement

This complicated guide will walk you through the many steps in removing the screen. Keep track of screws removed.

Written By: Austin Bons



## INTRODUCTION

If you determined that the LCD screen is unresponsive, or "black," this guide will show you how to access and remove the screen.

---

### TOOLS:

- [Phillips #1 Screwdriver](#) (1)
  - [Heavy-Duty Spudger](#) (1)
  - [Metal Spudger](#) (1)
  - [Tweezers](#) (1)
  - [iFixit Opening Tools](#) (1)
-

## Step 1 — Battery



- Power down the computer and unplug the power adapter.

## Step 2



- Flip the laptop upside down. Locate the two latches on both sides of the battery.

### Step 3



- Slide the latch on the right outwards, releasing the lock. The latch stays unlocked once moved.
- Simultaneously slide the latch on the left outwards while pulling the battery towards you.

 Do not touch the metal connectors on the laptop and the battery.

### Step 4 — Back Panel Removal



- Remove the single captive screw on the back panel with your Phillips #1 screwdriver.



## Step 5



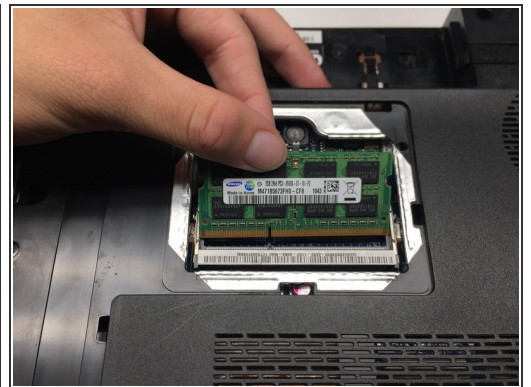
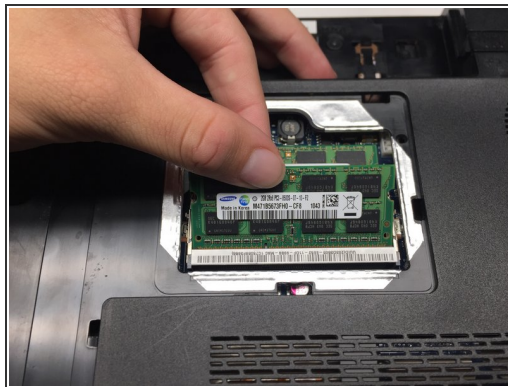
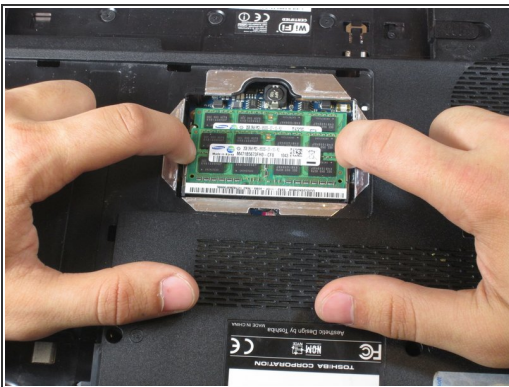
- Pry the removal tab up. You will feel and hear the first clip release, popping up slightly.
- Work your way around the border of the panel, releasing the rest of the clips.
- Once all clips are released, lift the cover up and pull towards you.

## Step 6 — Hard Drive



- Slide the hard drive to the left, using the silver tab.
  - Pull up the silver tab, removing the hard drive from the slot.
- ⚠ Do not touch the metal data pins on the hard drive or computer.

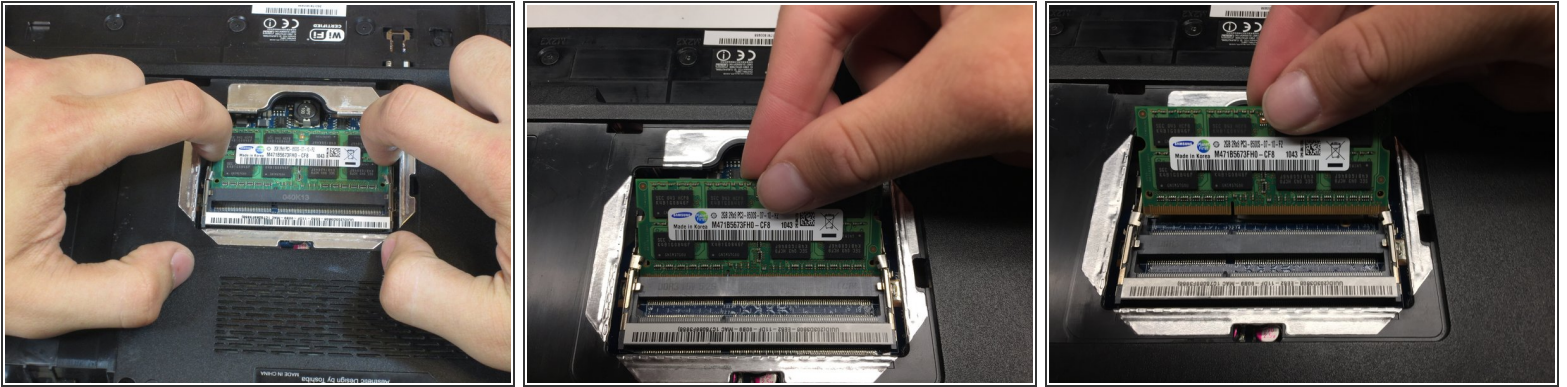
## Step 7 — RAM



- Using your fingers, spread the spring tabs holding the top stick of RAM in place.
- Once the tabs are spread apart, the stick of RAM will pop up.
- Remove the first stick of RAM by pulling out along the same angle the RAM stick springs up.

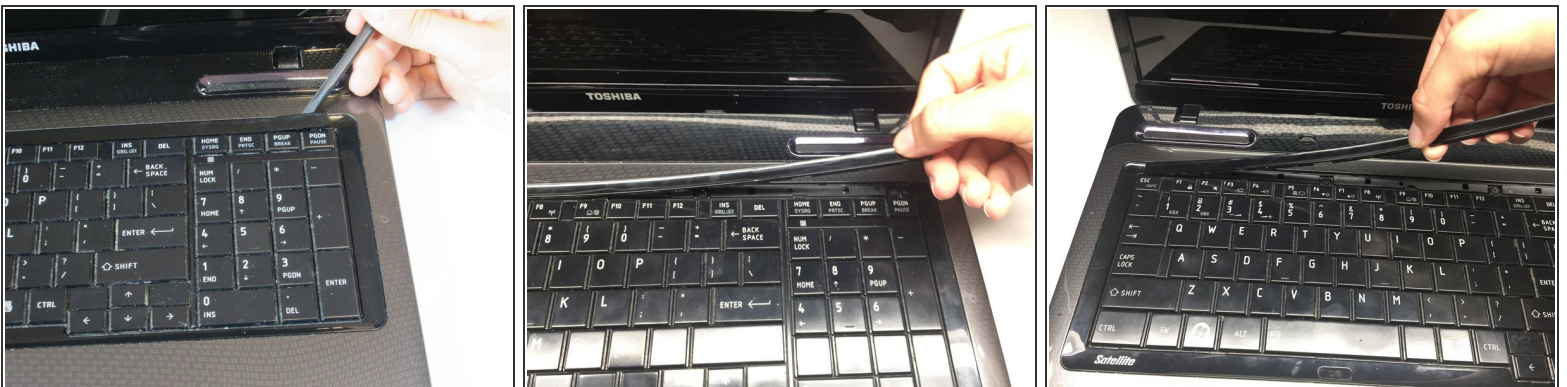


## Step 8



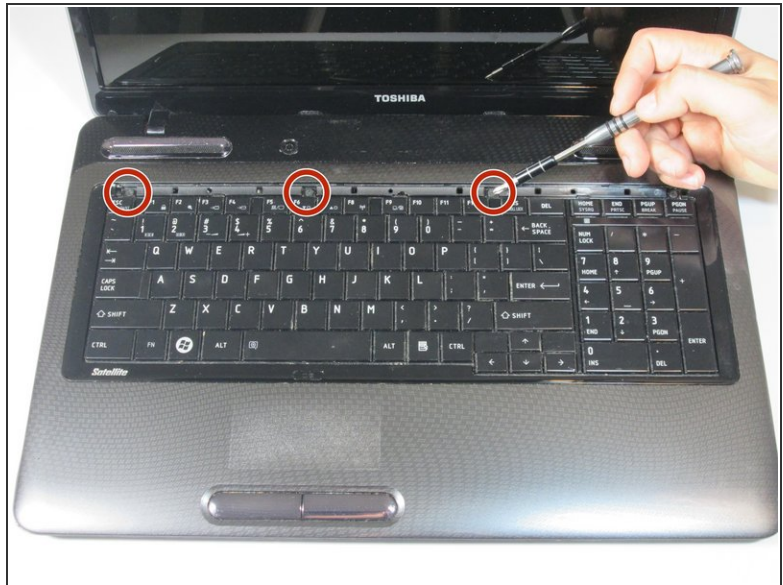
- Repeat the same procedure to remove the second stick of RAM.

## Step 9 — Keyboard



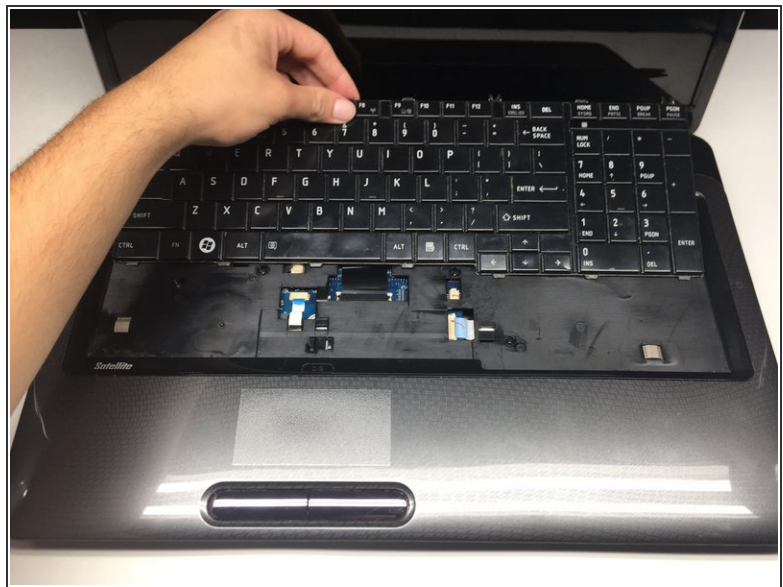
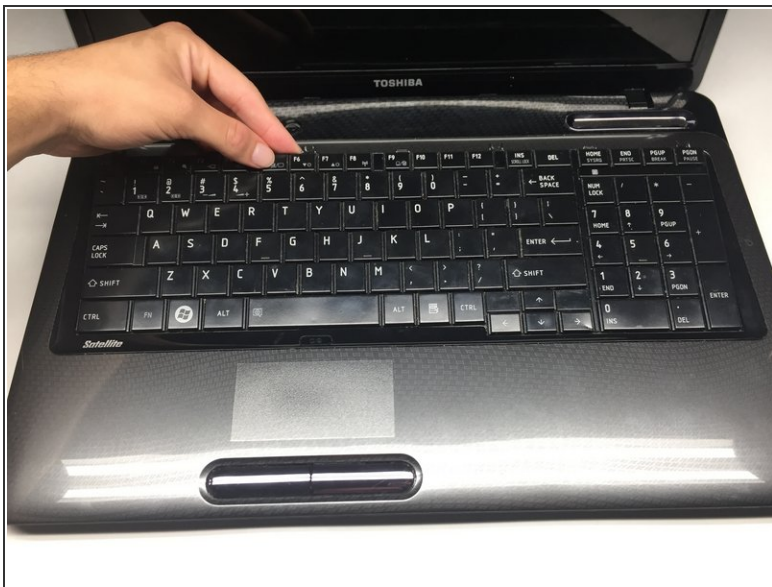
- Pry under the plastic strip, starting on the top right side of the key board with a Heavy Duty Spudger.
- Once the first corner is raised, use your hand pulling upwards and release the rest of the strip.

## Step 10



- Remove the first 3mm screw with the Phillips #1 screwdriver.
- Remove the next three 3mm screws.

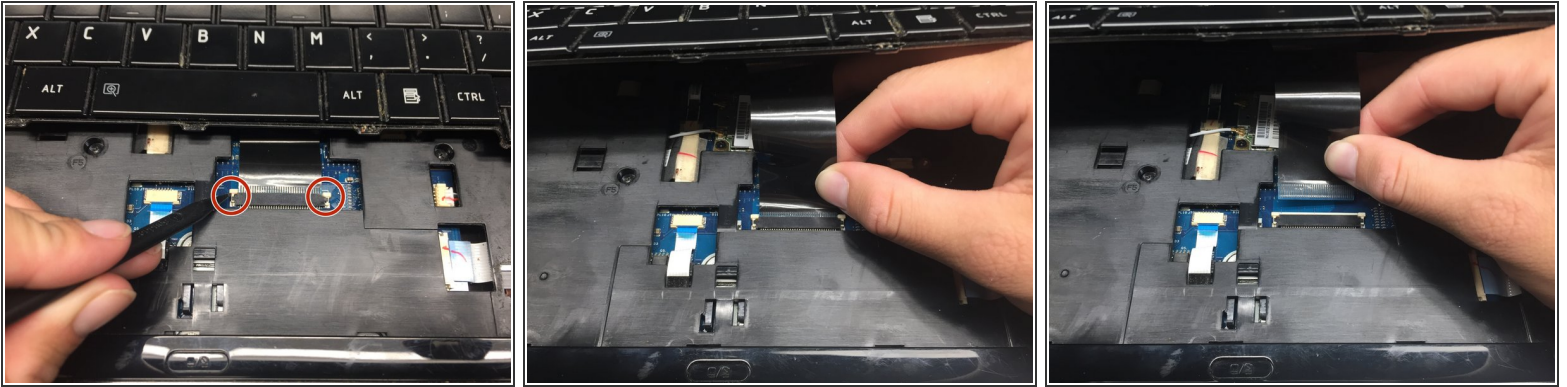
## Step 11



⚠ Lift the keyboard gently . Slide it forward towards the screen and speakers. This reveals the connection needed for the next step.

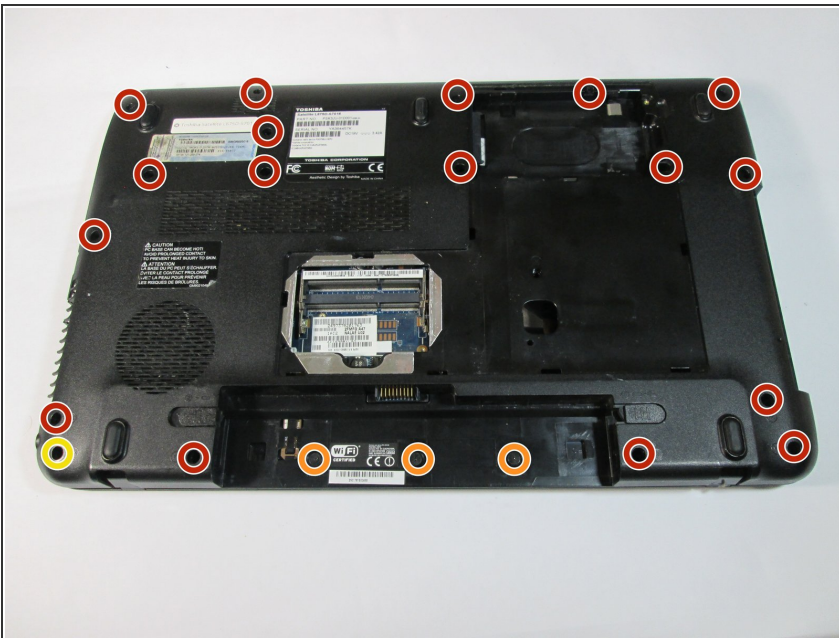


## Step 12



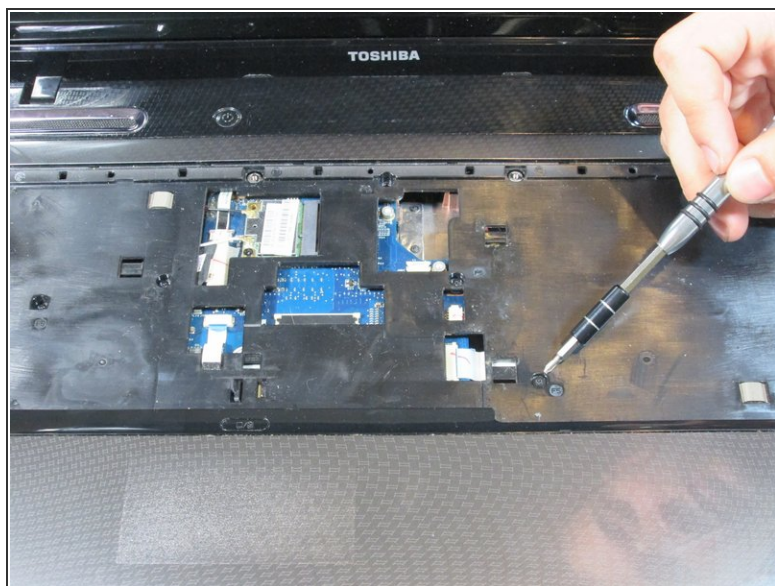
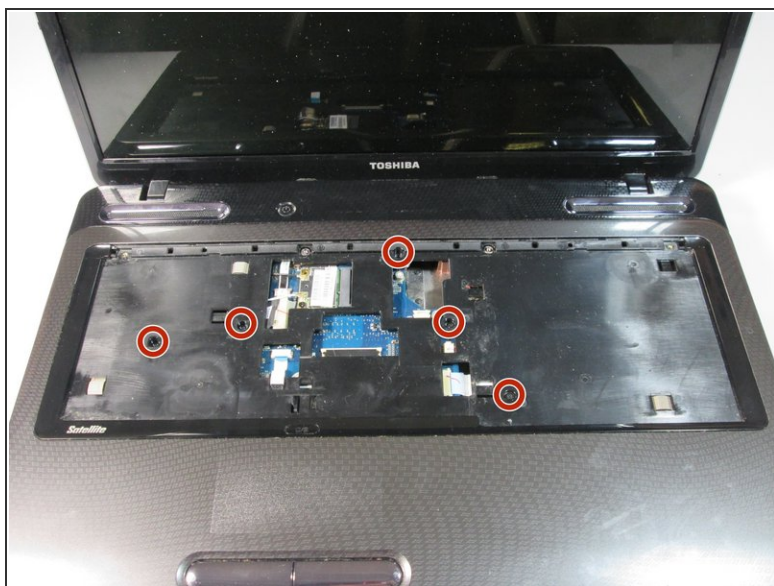
- Use the pointed end of the Heavy-Duty Spudger and push the pins toward the screen, leaving them in this position.
- Carefully slide the connector out of the port.

## Step 13 — Top Case Housing



- Remove the following screws with a Phillips #1 screwdriver.
  - Seventeen 5mm screws (recessed)
  - Three 2mm screws in the battery bay (flush-mounted)
  - Single 5mm screw does not need removal unless working on the screen

## Step 14



- Remove five 5mm screws with the screwdriver.

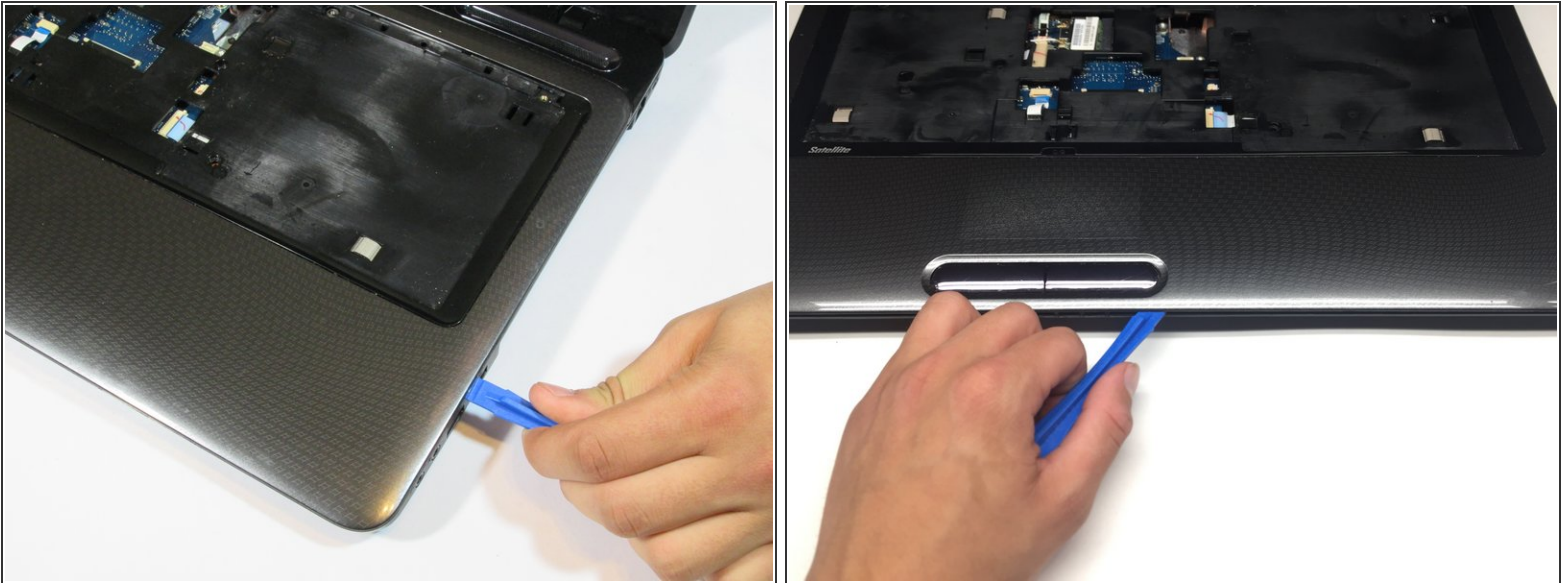
## Step 15



- Locate the trackpad connector.
- Pull the ribbon from the connector.



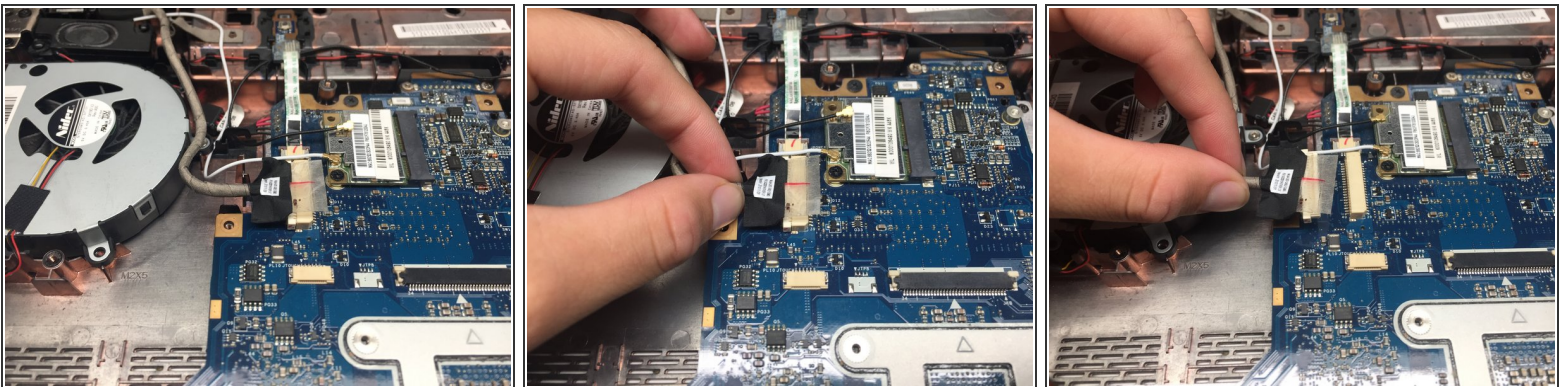
## Step 16



- Pry under the top case housing along the perimeter with a plastic opening tool.

⚠ Be careful and gentle with this step, the clips you are releasing here are plastic and can be broken by violent prying.

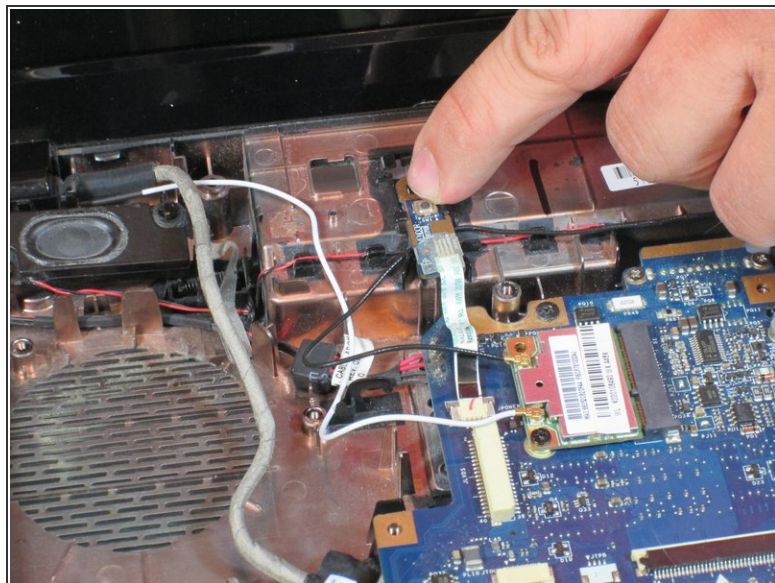
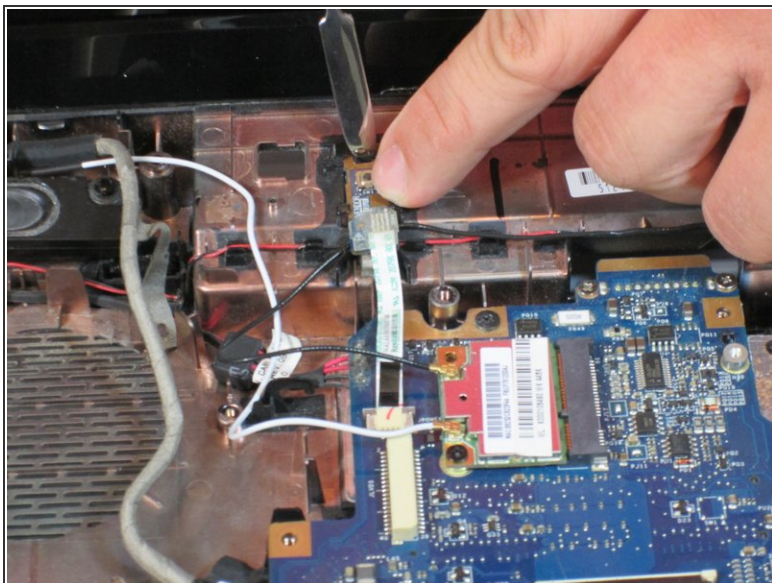
## Step 17 — Screen



- Remove the screen input wire from the port.

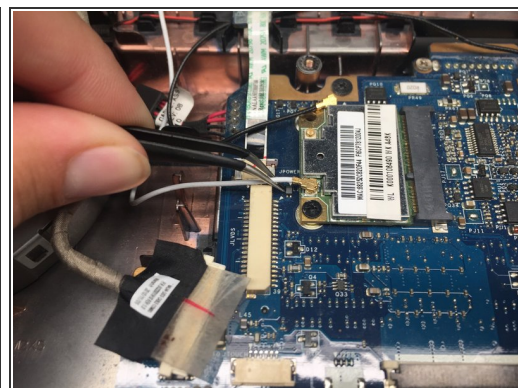


## Step 18



- Slide the metal power button connector out of its port, allowing the black wire to be moved from under it.

## Step 19



- Lift the black connector with tweezers and repeat the same action for the white connector.

## Step 20



- The screen is attached with two hinges on both sides of the laptop.
- Remove the three 5mm screws (two on the left hinge, one on the right hinge) using a screwdriver.
- Remove brass fitting held in place by removing the 5mm screw circled in yellow in step 15.

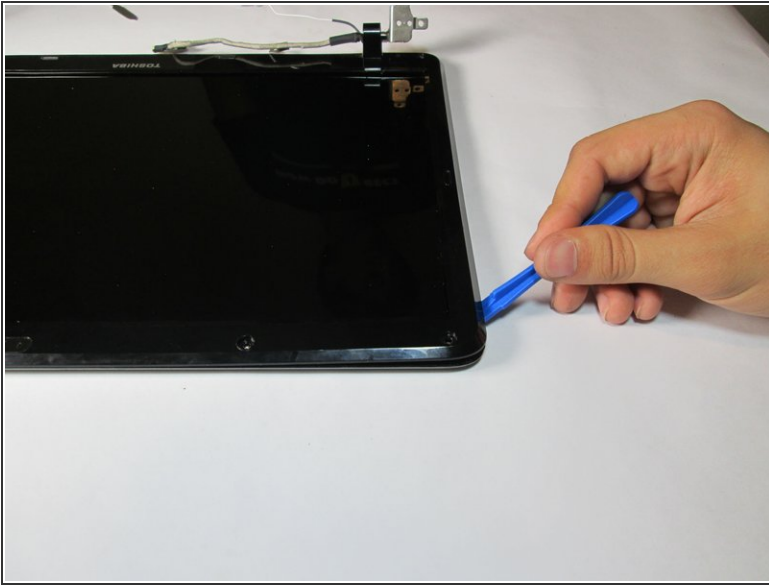
## Step 21



- Remove the 6 rubber tabs on the housing using a metal Spudger.
- Remove the six 6mm screws holding the housing.



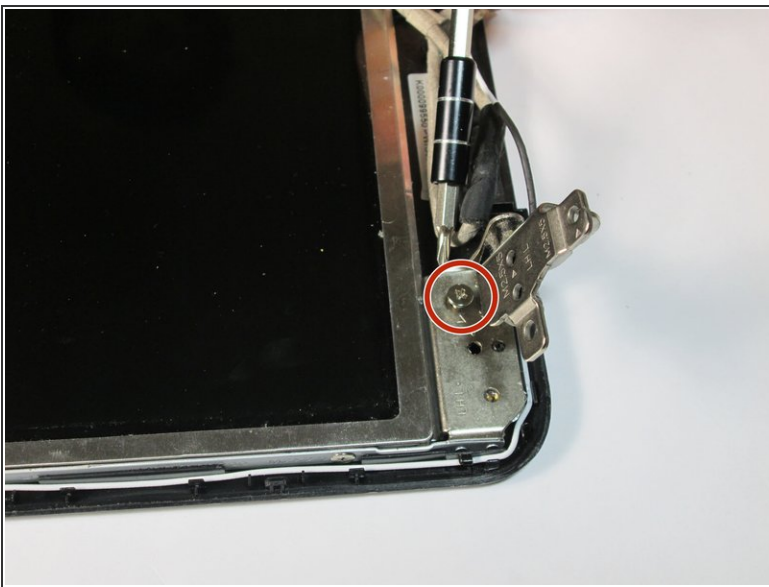
## Step 22



- Use the plastic opening tool to pry the screen housing.

⚠ Only pry from the outside edges! Prying from the inside edges will likely damage the LCD panel.

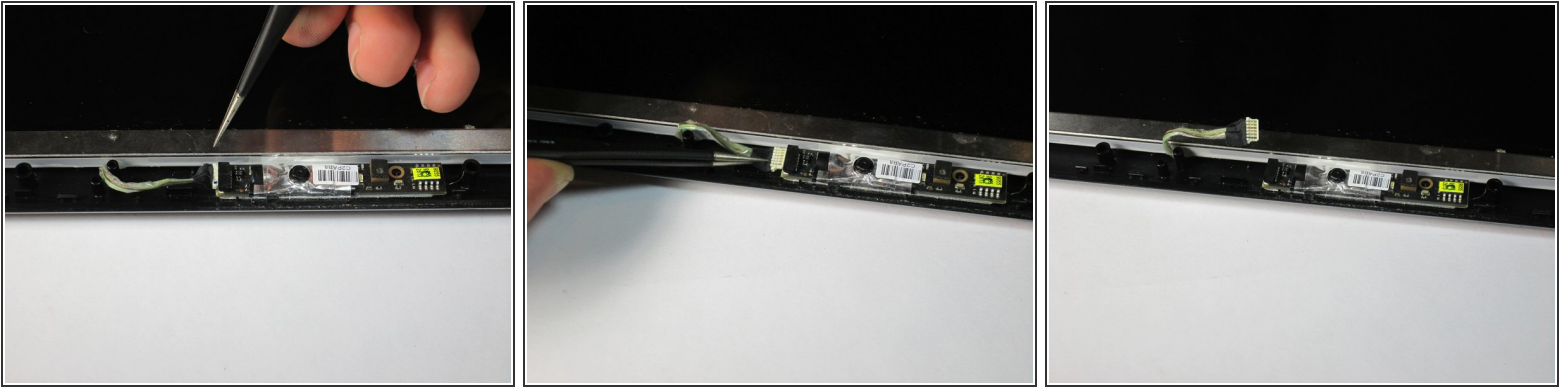
## Step 23



- Remove two 5mm screws using a screwdriver. There is one screw at each hinge.
- Remove white wire from the perimeter of the plastic housing.

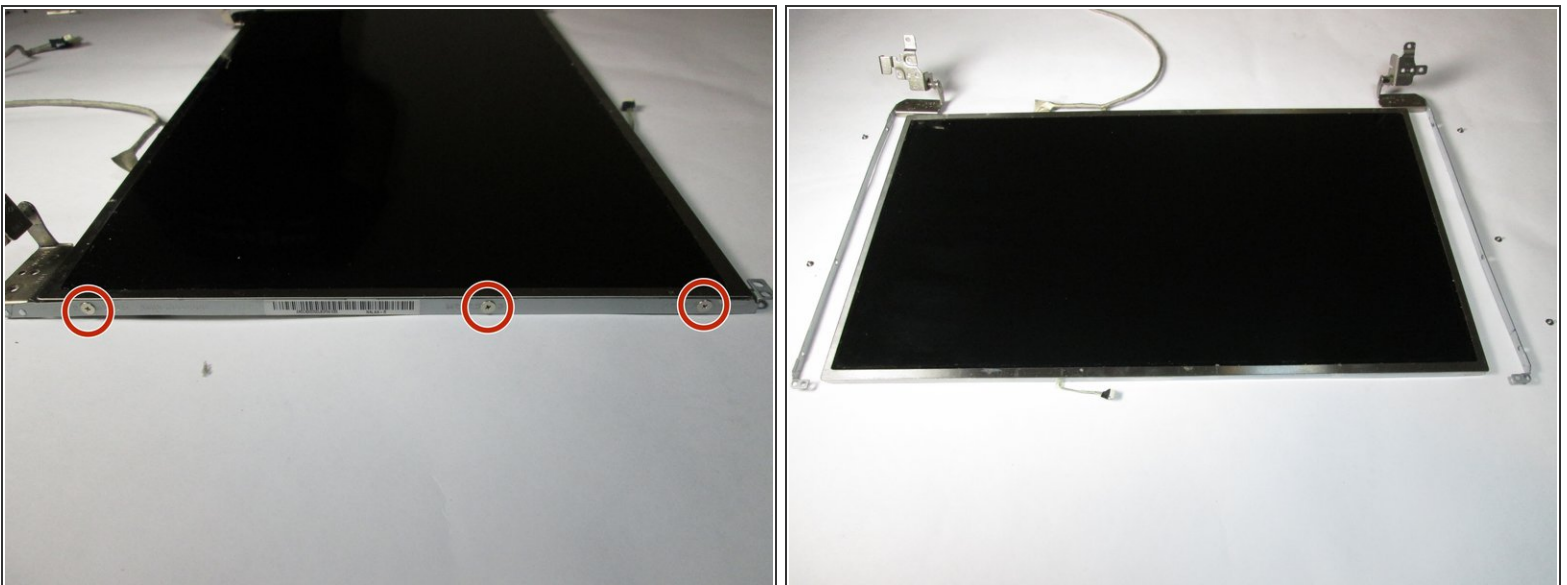


## Step 24



- Disconnect the webcam data wire using tweezers.

## Step 25



- Remove the three 2.5mm screws on each side of the screen casing with a screwdriver.
- The two metal casings can now be removed.

To reassemble your device, follow these instructions in reverse order.