



Toshiba Satellite L675D-S7016 Top Case Housing Removal

This removal of the top house case housing is a necessary prerequisite in order to gain access to components such as the fan and the screen

Written By: Austin Bons



INTRODUCTION

If you are trying to access the fan or the screen, this guide will show you how to remove the top house casing so that you can access these parts.

TOOLS:

- [Phillips #1 Screwdriver](#) (1)
 - [Heavy-Duty Spudger](#) (1)
 - [iFixit Opening Tools](#) (1)
-

Step 1 — Battery



- Power down the computer and unplug the power adapter.

Step 2



- Flip the laptop upside down. Locate the two latches on both sides of the battery.

Step 3



- Slide the latch on the right outwards, releasing the lock. The latch stays unlocked once moved.
- Simultaneously slide the latch on the left outwards while pulling the battery towards you.

 Do not touch the metal connectors on the laptop and the battery.

Step 4 — Back Panel Removal



- Remove the single captive screw on the back panel with your Phillips #1 screwdriver.

Step 5



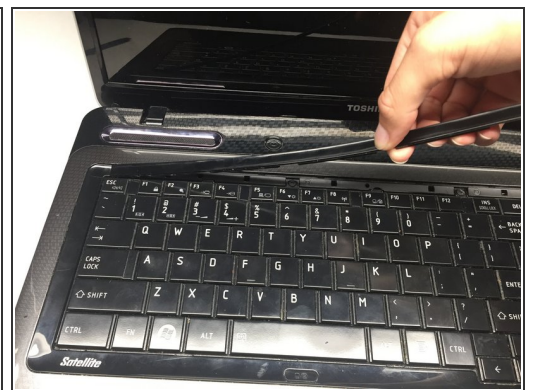
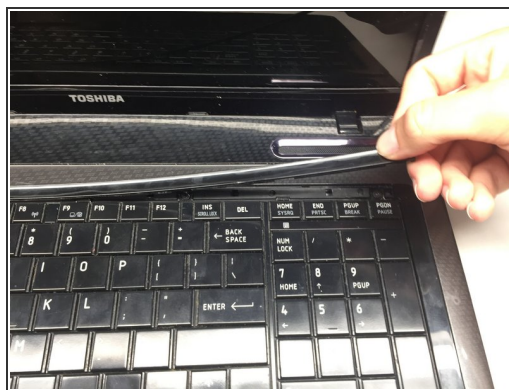
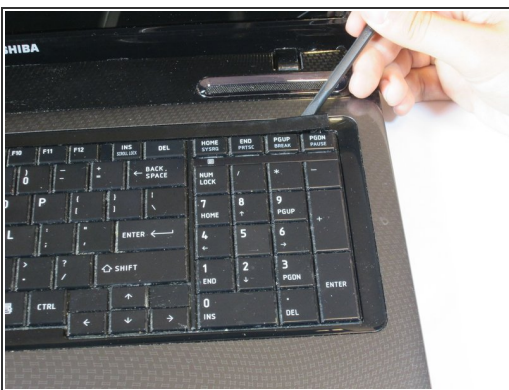
- Pry the removal tab up. You will feel and hear the first clip release, popping up slightly.
- Work your way around the border of the panel, releasing the rest of the clips.
- Once all clips are released, lift the cover up and pull towards you.

Step 6 — Hard Drive



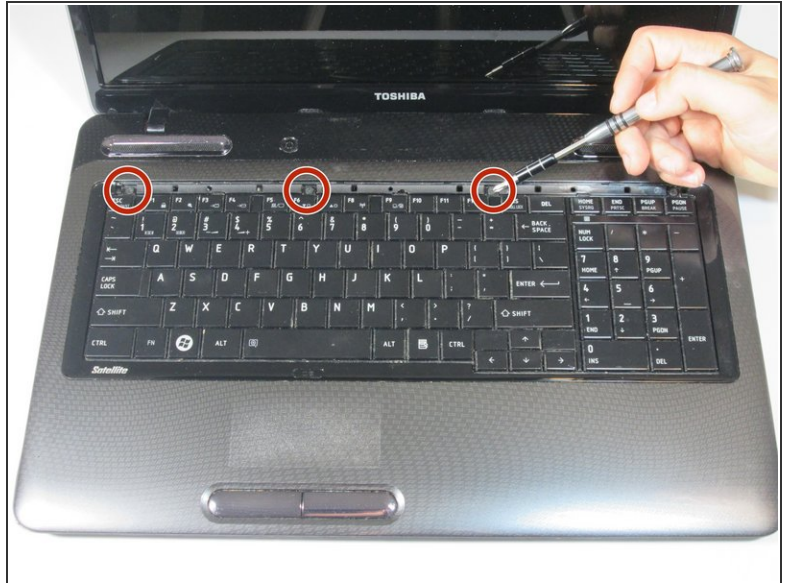
- Slide the hard drive to the left, using the silver tab.
 - Pull up the silver tab, removing the hard drive from the slot.
- ⚠ Do not touch the metal data pins on the hard drive or computer.

Step 7 — Keyboard



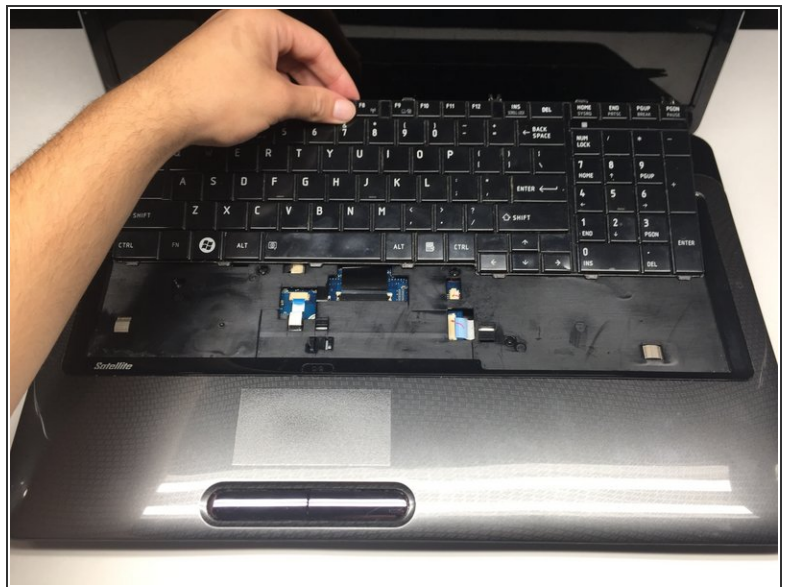
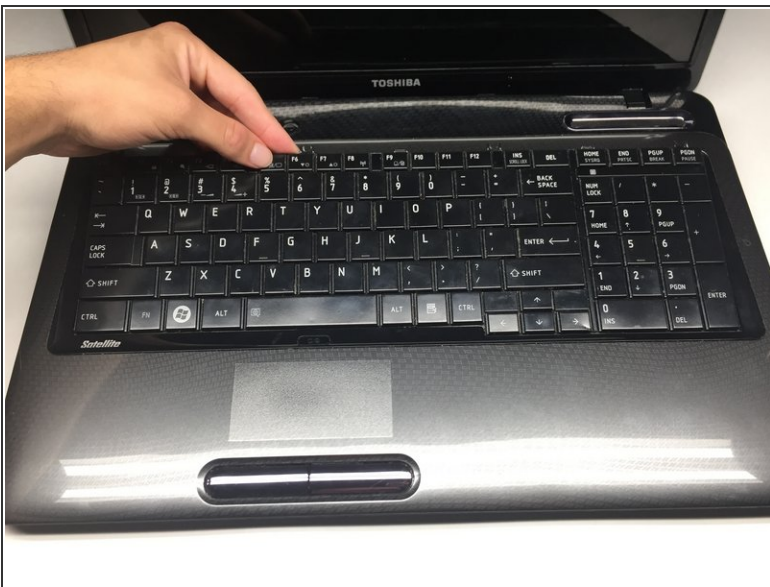
- Pry under the plastic strip, starting on the top right side of the key board with a Heavy Duty Spudger.
- Once the first corner is raised, use your hand pulling upwards and release the rest of the strip.


Step 8



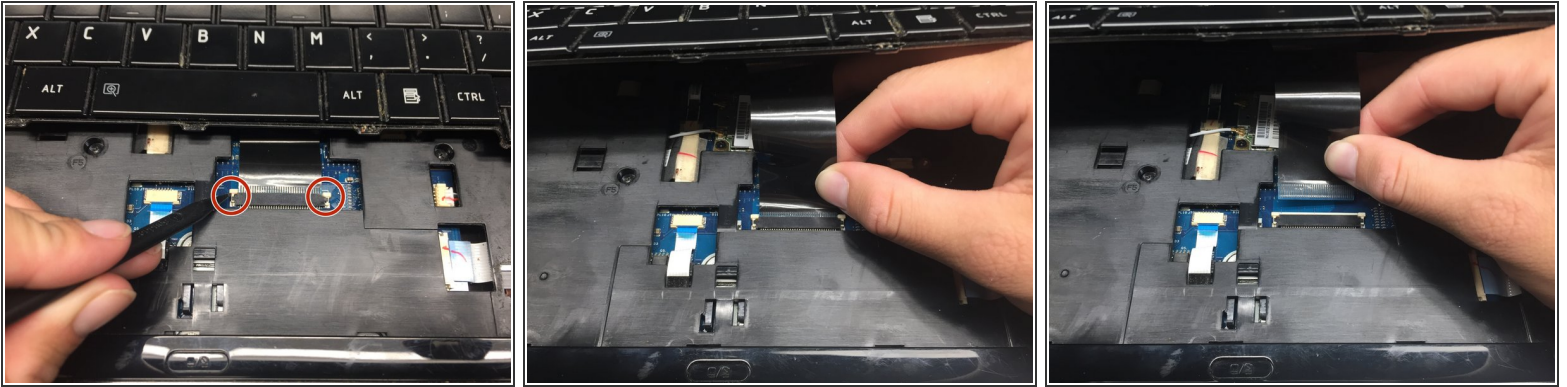
- Remove the first 3mm screw with the Phillips #1 screwdriver.
- Remove the next three 3mm screws.

Step 9



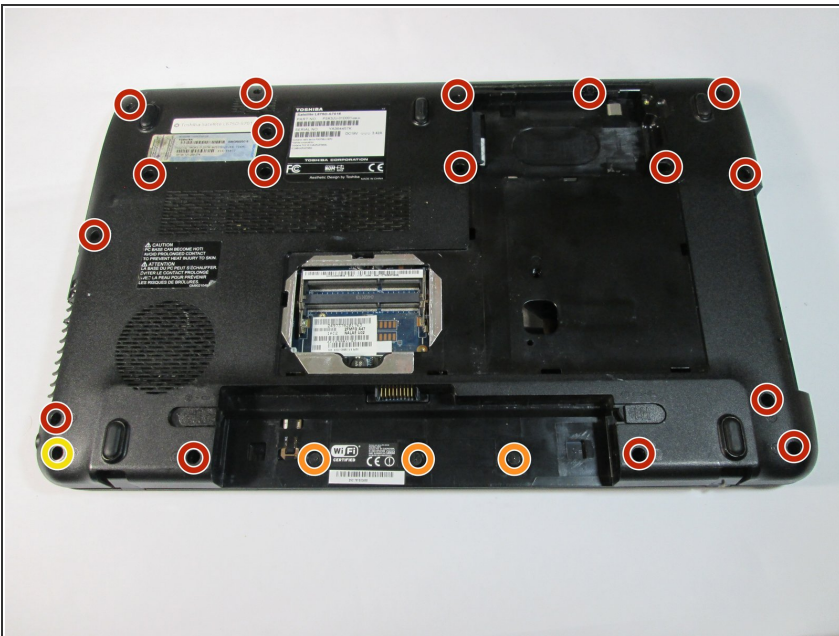
 Lift the keyboard gently . Slide it forward towards the screen and speakers. This reveals the connection needed for the next step.

Step 10



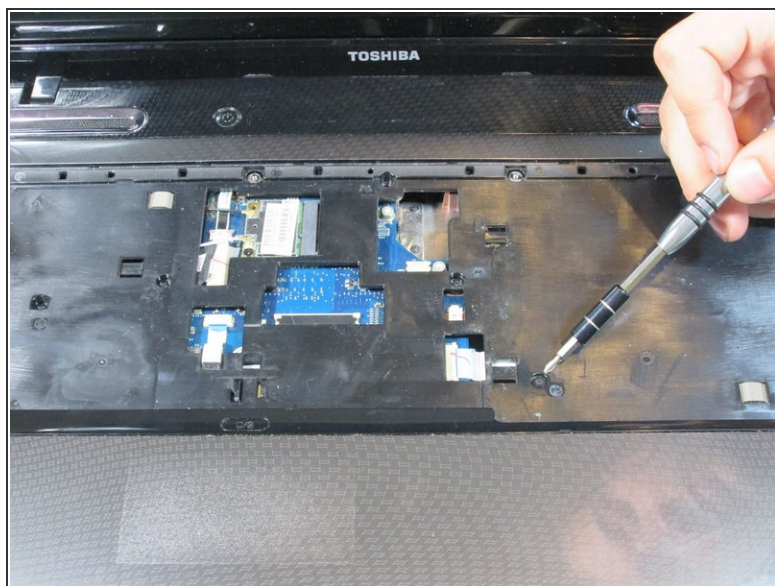
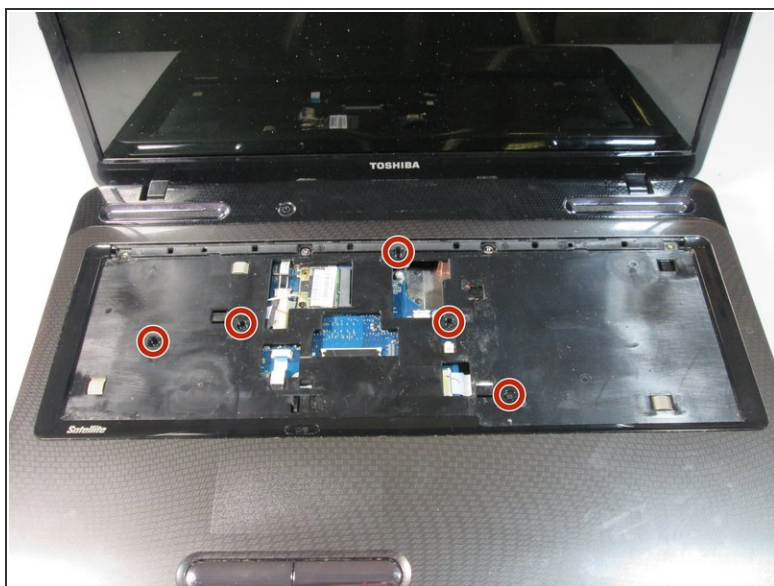
- Use the pointed end of the Heavy-Duty Spudger and push the pins toward the screen, leaving them in this position.
- Carefully slide the connector out of the port.

Step 11 — Top Case Housing



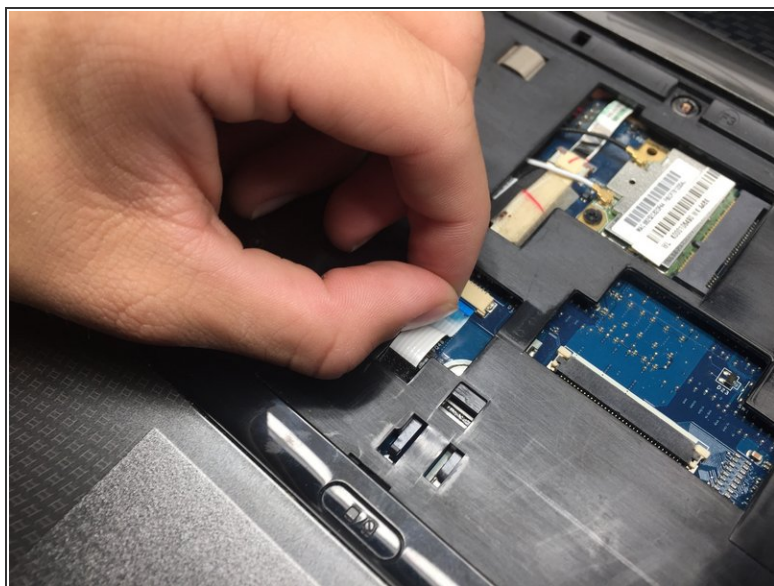
- Remove the following screws with a Phillips #1 screwdriver.
 - Seventeen 5mm screws (recessed)
 - Three 2mm screws in the battery bay (flush-mounted)
 - Single 5mm screw does not need removal unless working on the screen

Step 12



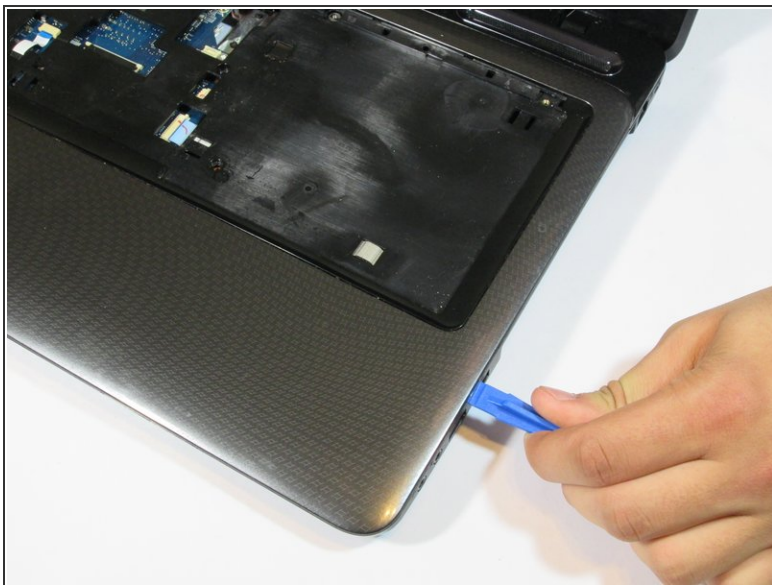
- Remove five 5mm screws with the screwdriver.

Step 13




- Locate the trackpad connector.
- Pull the ribbon from the connector.

Step 14



- Pry under the top case housing along the perimeter with a plastic opening tool.

 Be careful and gentle with this step, the clips you are releasing here are plastic and can be broken by violent prying.

To reassemble your device, follow these instructions in reverse order.