



Toshiba Satellite L755-S5244 Disk Drive Replacement

This is a guide on how to replace the disk drive in a Toshiba Satellite L755-S5244.

Written By: Victor Salazar



INTRODUCTION

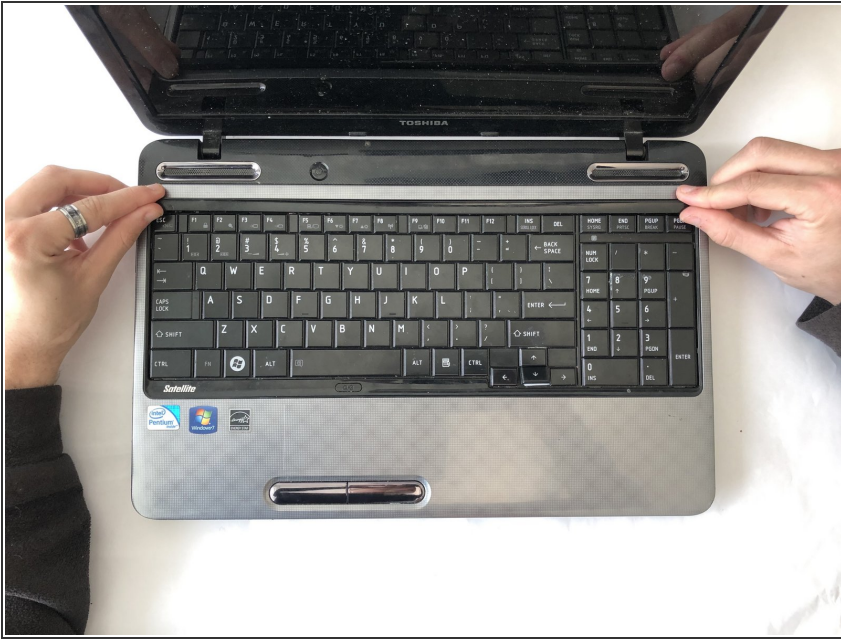
If your Toshiba Satellite L755-S5244 disk drive is not reading disks, then it should be replaced. The removal of or the replacement of the disk drive will require this guide.



TOOLS:

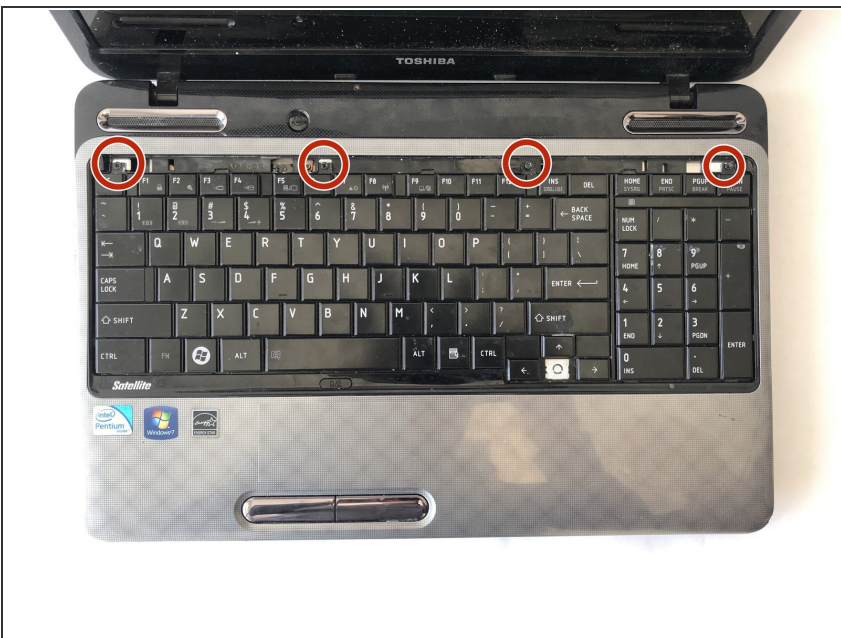
- [Phillips #0 Screwdriver](#) (1)
-

Step 1 — Keyboard



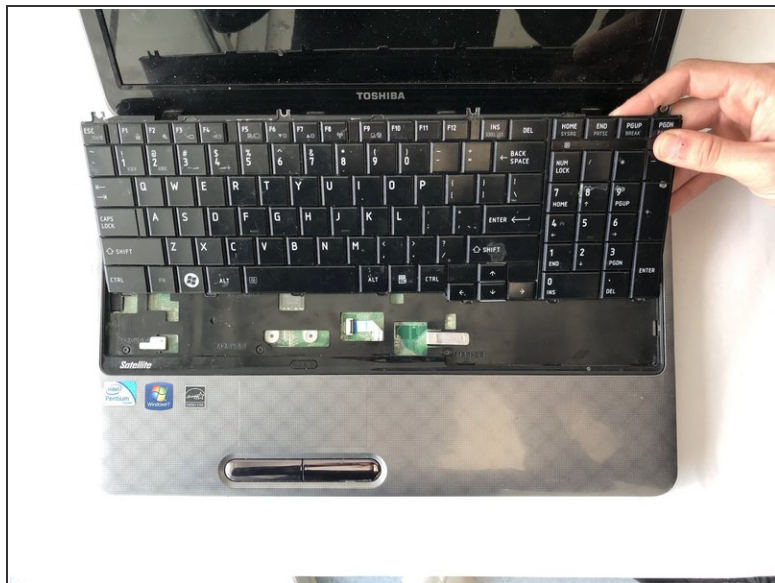
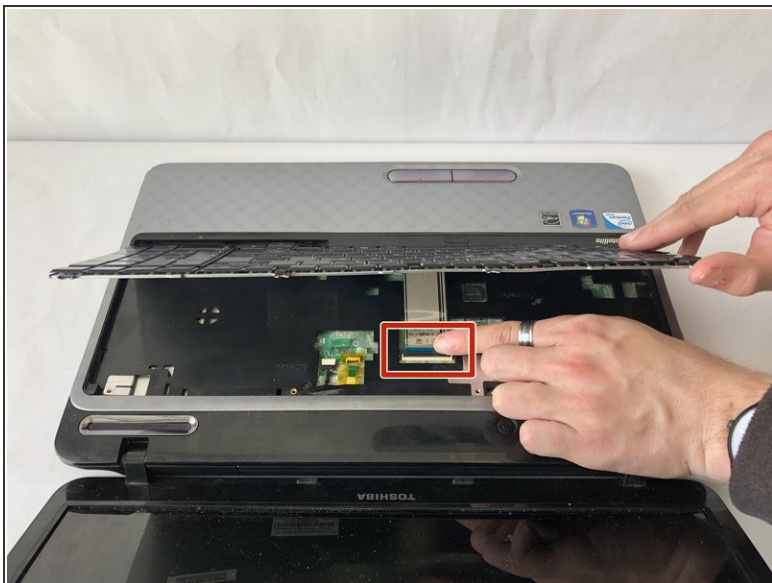
- Unsnap and remove the bar above the keyboard.

Step 2



- Unscrew the four 4mm Phillips #0 screws beneath the bar.

Step 3



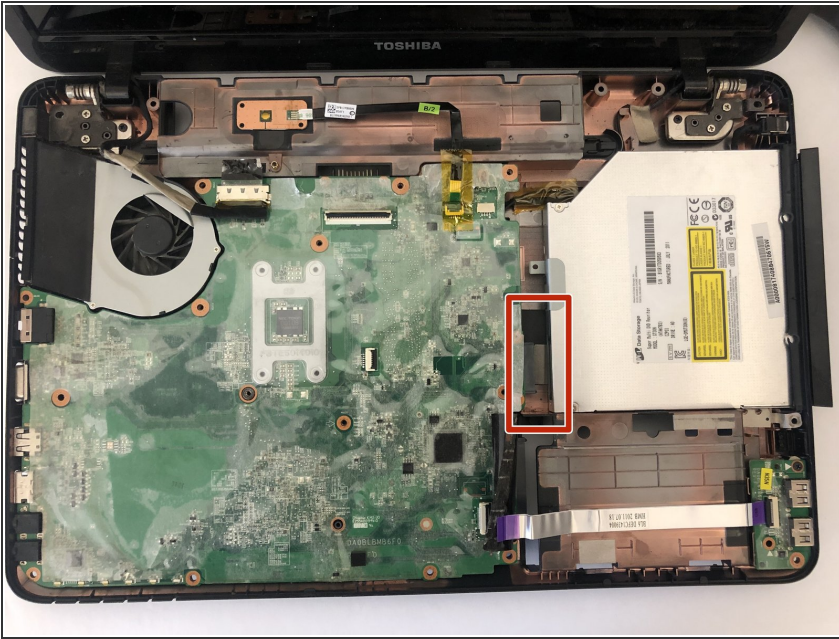
- Pull keyboard up and partially out.
- Detach conductor ribbon.
- Slide keyboard out completely.

Step 4 — Disk Drive



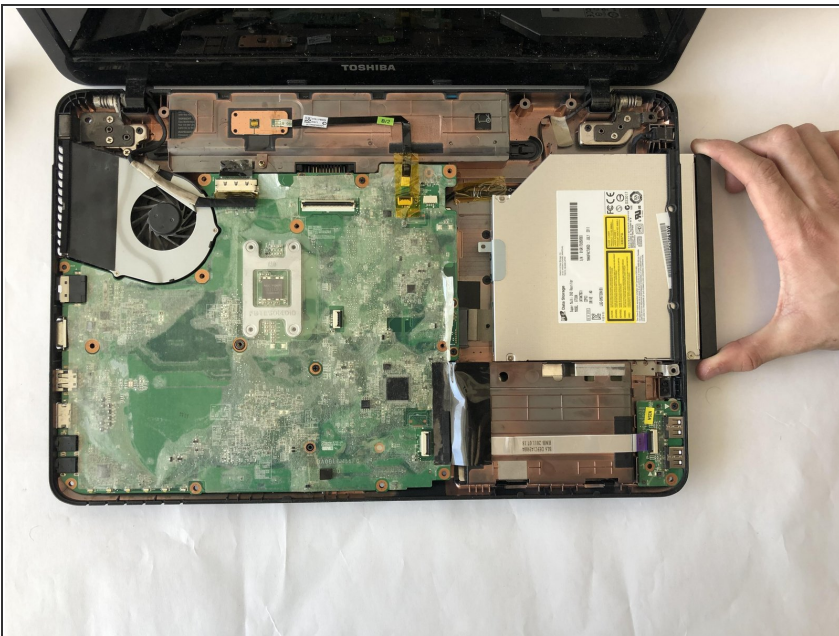
- Remove the seven 4mm Phillips #0 screws beneath the keyboard.
- After the screws are removed, remove the face plate to reveal the motherboard.

Step 5



- Lift up the flap and there will be two 2 mm Phillips screws beneath that will need to be unscrewed to pull the disk drive out.

Step 6



- Now the disk drive will be able to be removed from the motherboard by sliding the drive to the right.

To reassemble your device, follow these instructions in reverse order.