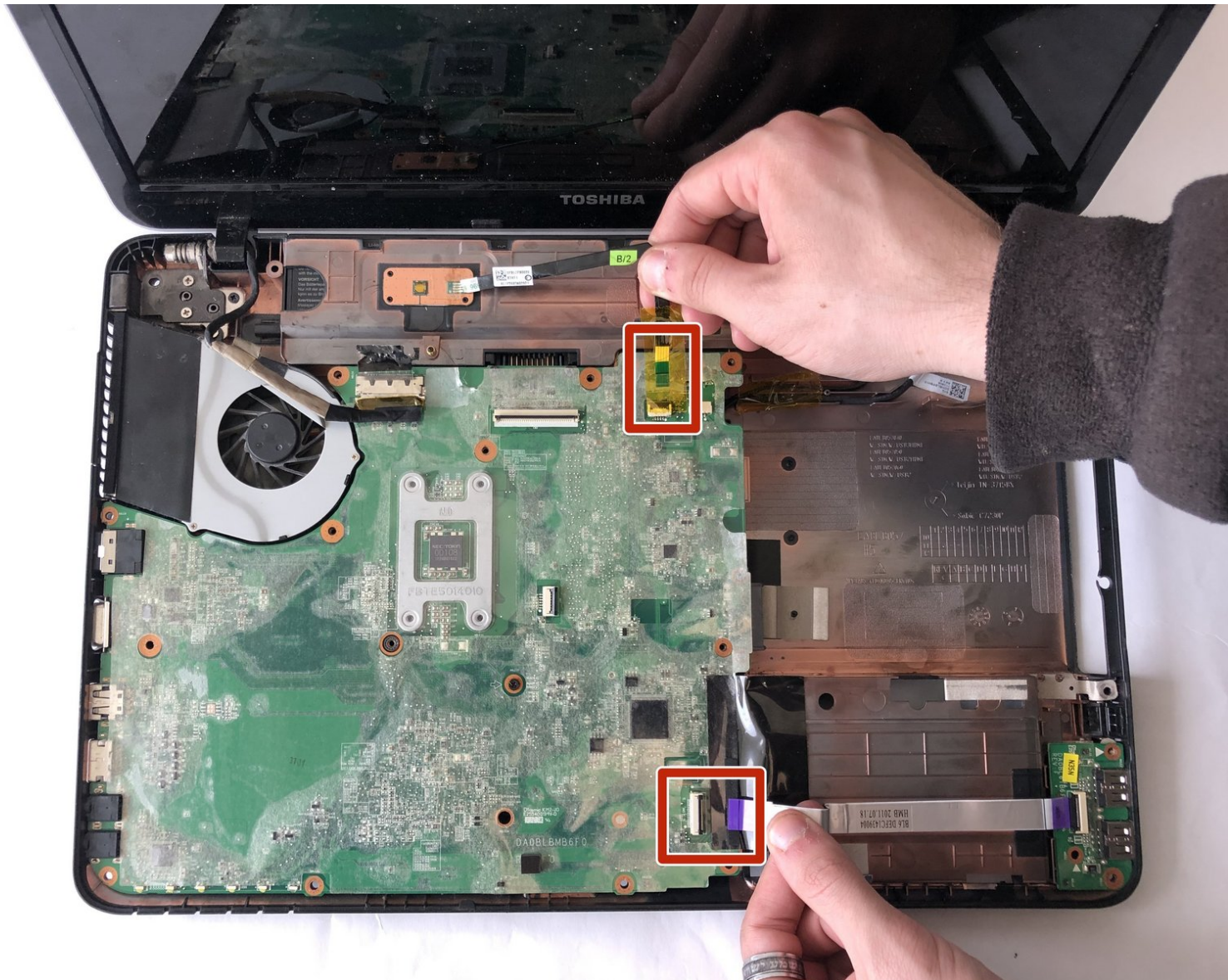




Toshiba Satellite L755-S5244 Motherboard Replacement

Removing and replacing the Toshiba Satellite L755-S5244 motherboard and fan.

Written By: Anthony Buschini



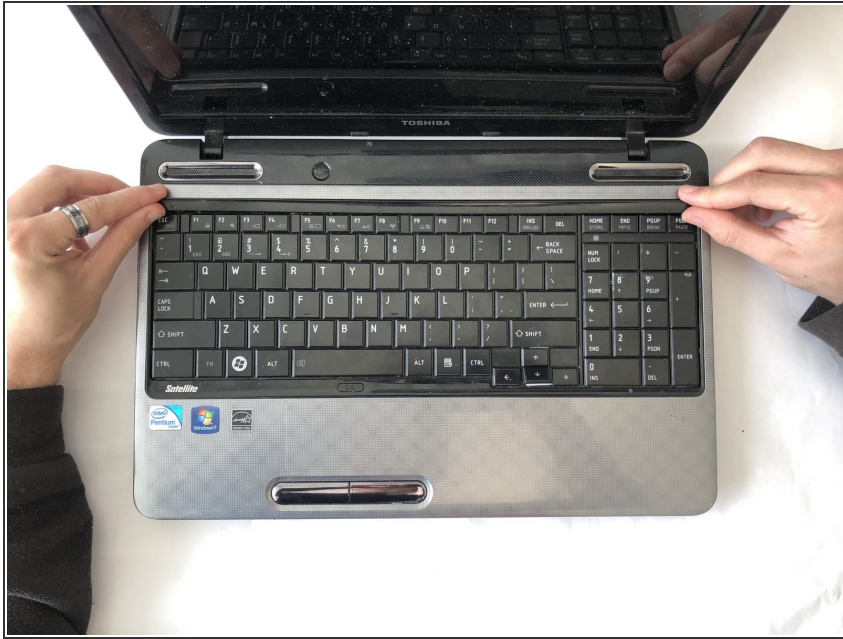
INTRODUCTION

To replace the Satellite L755 motherboard you will need a Phillips (PH0) screwdriver. The motherboard is fragile and should not be bent or pried away from other parts or forced into place since it may break.

TOOLS:

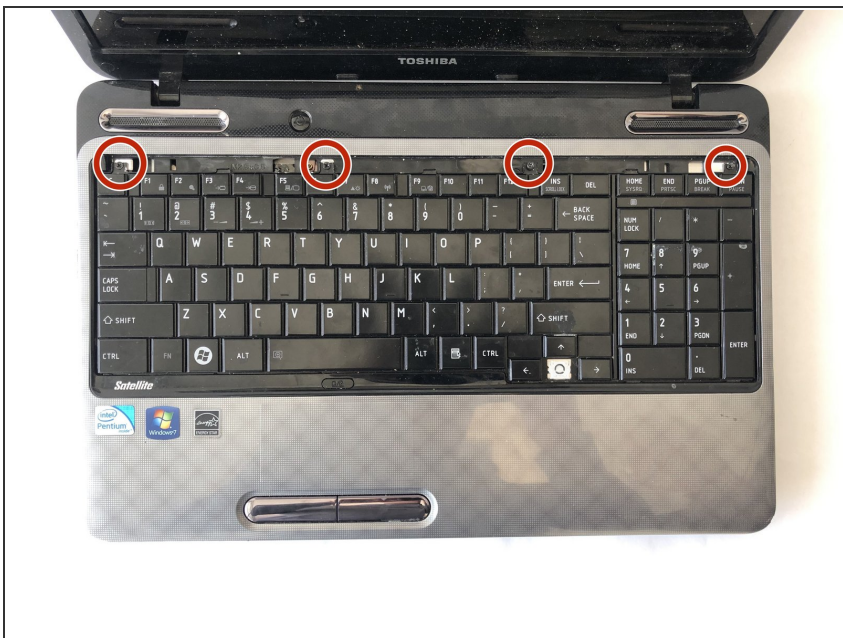
- [Phillips #0 Screwdriver](#) (1)
-

Step 1 — Keyboard



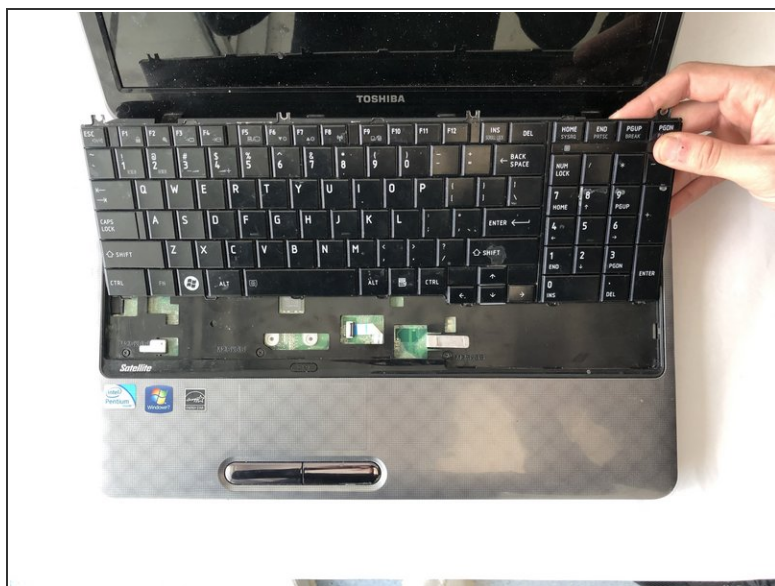
- Unsnap and remove the bar above the keyboard.

Step 2



- Unscrew the four 4mm Phillips #0 screws beneath the bar.

Step 3



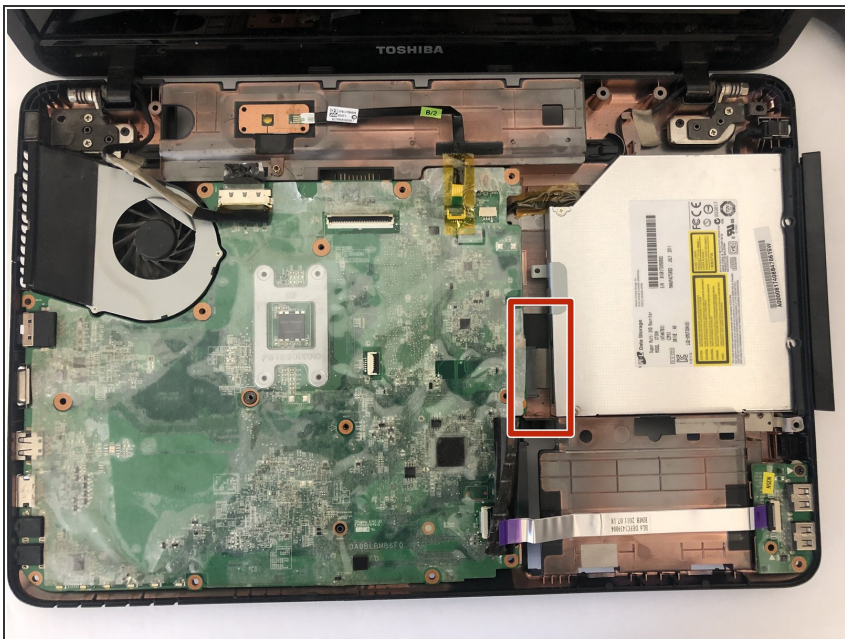
- Pull keyboard up and partially out.
- Detach conductor ribbon.
- Slide keyboard out completely.

Step 4 — Disk Drive



- Remove the seven 4mm Phillips #0 screws beneath the keyboard.
- After the screws are removed, remove the face plate to reveal the motherboard.

Step 5



- Lift up the flap and there will be two 2 mm Phillips screws beneath that will need to be unscrewed to pull the disk drive out.

Step 6



- Now the disk drive will be able to be removed from the motherboard by sliding the drive to the right.

Step 7 — Motherboard and Fan



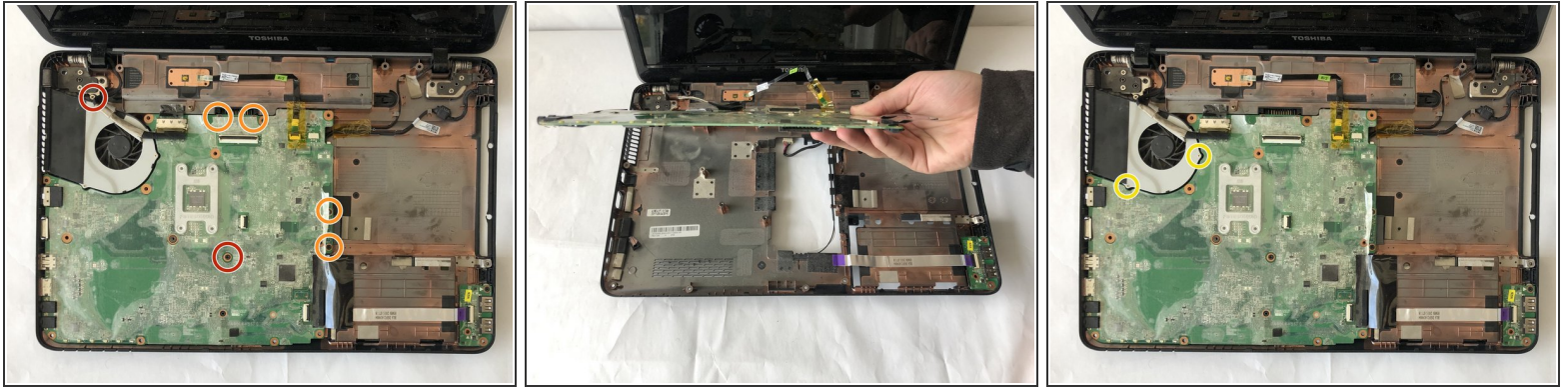
- Carefully remove the 2 conductor ribbons.
- ⚠ Do not tear the yellow tape covering the upper conductor ribbon if possible.
- ⓘ The lower right ribbon may be removed at either the left or right ends by flipping up the black tab.

Step 8



- Remove the indicated conduit by gently pulling it away from the motherboard.

Step 9



- Remove the 5mm Phillips #0 screw in the middle of the motherboard, and the 4mm Phillips #0 screw on the upper left near the fan.
- Remove the four 4mm Phillips #0 screws under the edge covering flaps.
- Carefully lift out the motherboard and fan.
- To detach the fan, remove the two 2mm Phillips #0 screws.

To reassemble your device, follow these instructions in reverse order.