



# Toshiba Satellite L755D-S5150 Keyboard Replacement

This guide will show you how to replace a keyboard for a Satellite L7455D-S5150 laptop.

Written By: Shaheedah



---

## INTRODUCTION

Before taking out the keyboard it is good to know that this is the last resort to your problem. Make sure that you are in an area with space because many things will be removed and you do not want to lose them.



### TOOLS:

- [iFixit Opening Tools](#) (1)
  - [Phillips #00 Screwdriver](#) (1)
-

## Step 1 — Battery



- After shutting down your laptop, turn your laptop over and click the left tab left, then pull the right tab right as you pull the battery out.
- ⓘ This step should always be done before working on your laptop to minimize electrostatic shock.

## Step 2 — Keyboard



- Using the plastic opening tool carefully pry the plastic strip that sits at the top of the keyboard.

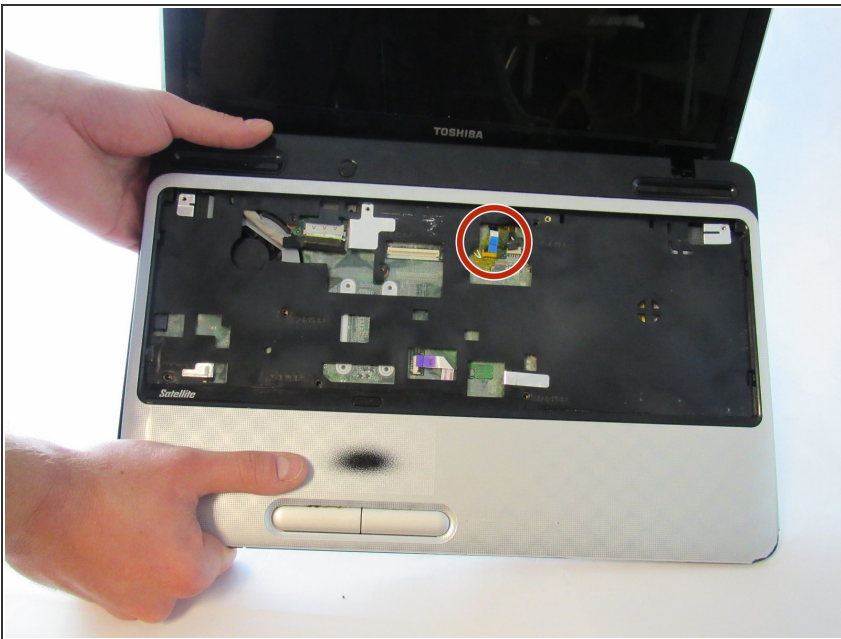


### Step 3



- Use the Phillips PH00 to unscrew the four 4mm screws that holds the keyboard in place.
- Using the plastic opening tool carefully pry your keyboard out without disturbing the cord underneath it.

### Step 4



- Remaining is the cord that connects the keyboard to the motherboard. Remove this cord after the tabs are pressed in that releases keyboard.

Replace after you are done with your goal replacement.