



# Toshiba Satellite L755D-S5150 Motherboard Replacement

This guide will show how to safely take apart your Toshiba Satellite L755D-S5150 in order to replace a motherboard.

Written By: Shaheedah



# INTRODUCTION

Usually when people hear that their motherboard needs to be replaced they think that it is the end for their computer. It is something that should be done with care since there are many intricate parts. It's good to have something to put your screws in.



## TOOLS:

- [iFixit Opening Tools](#) (1)
  - [Phillips #00 Screwdriver](#) (1)
-

## Step 1 — Battery



- After shutting down your laptop, turn your laptop over and click the left tab left, then pull the right tab right as you pull the battery out.
- ⓘ This step should always be done before working on your laptop to minimize electrostatic shock.

## Step 2 — Keyboard



- Using the plastic opening tool carefully pry the plastic strip that sits at the top of the keyboard.

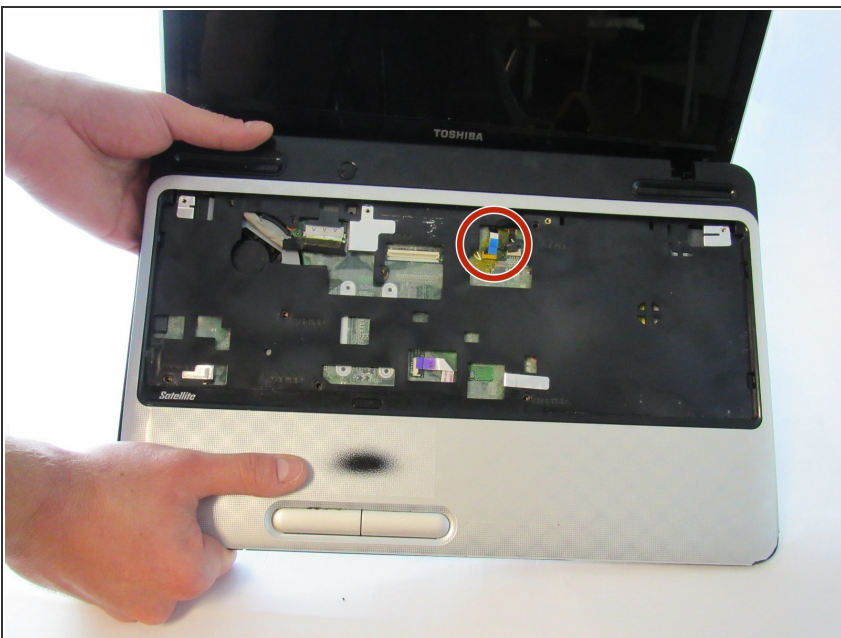


### Step 3



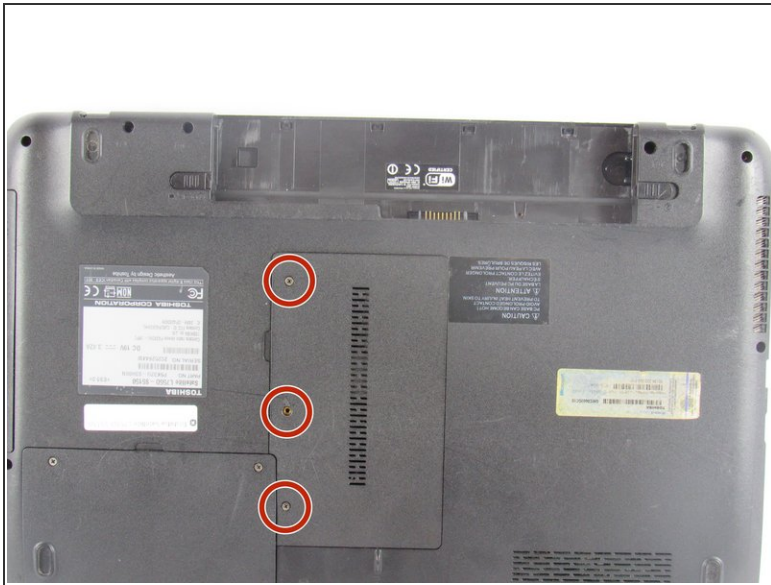
- Use the Phillips PH00 to unscrew the four 4mm screws that holds the keyboard in place.
- Using the plastic opening tool carefully pry your keyboard out without disturbing the cord underneath it.

### Step 4



- Remaining is the cord that connects the keyboard to the motherboard. Remove this cord after the tabs are pressed in that releases keyboard.

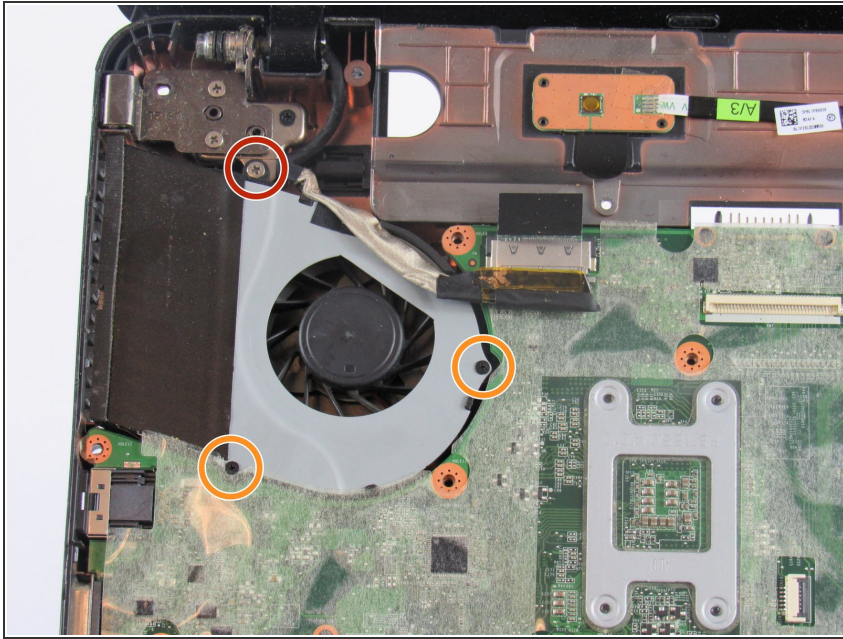
## Step 5 — Motherboard



- Using the Phillips PH00 screwdriver remove the three 4mm screws from the cover for the RAM.
- Use the Phillips PH00 to remove the one 4mm screw that holds the ODD.
- Slide the ODD outward.
- ⓘ Removing the RAM is not necessary
- ⓘ The ODD is also commonly referred to as a CD-ROM.



## Step 6



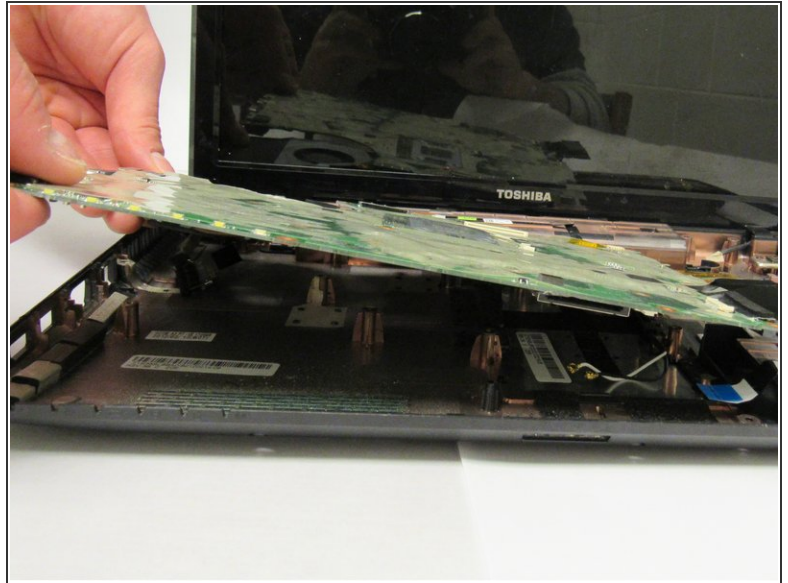
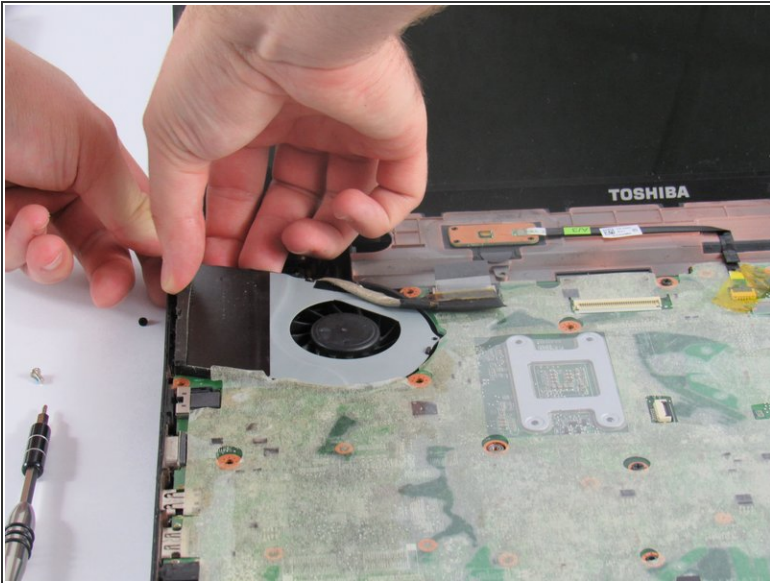
- Use the Phillips PH00 screwdriver to remove one 4mm screw.
- Use the Phillips PH00 screwdriver to remove the two 3mm screws from the fan.
- ❗ The motherboard will be accessed from below the keyboard, therefore you will not need to take out the bottom of the laptop.

## Step 7



- Use the Phillips PH00 to unscrew the fifteen 4mm screws holding down the motherboard.

## Step 8



- Lift the motherboard and disconnect the 4 pin connector on the bottom side.

To reassemble your device, follow these instructions in reverse order.