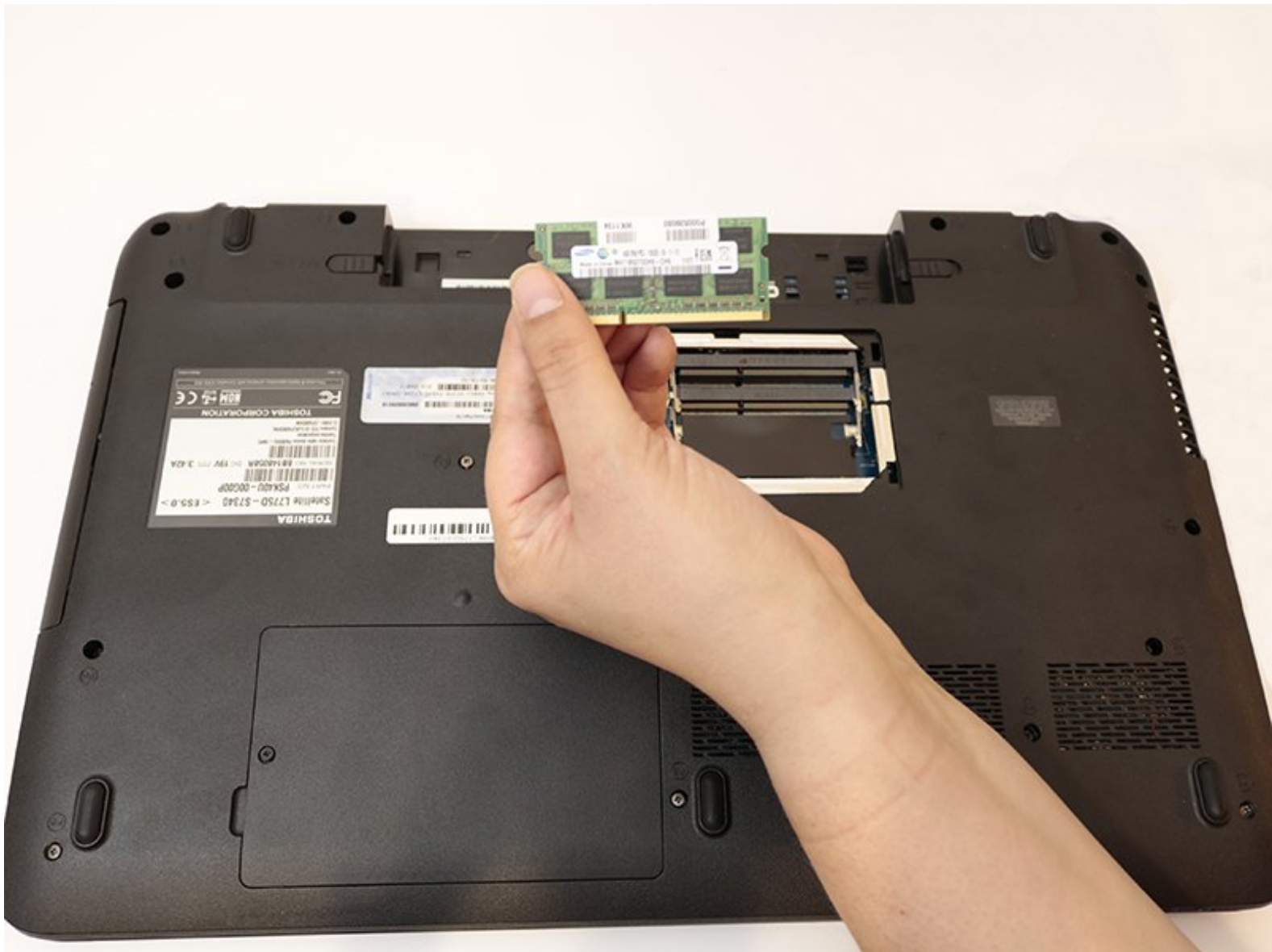




# Toshiba Satellite L775D-S7340 RAM Replacement

If your Toshiba Satellite L775D-S7340 is crashing during memory intensive tasks, you may need new RAM.

Written By: Elizabeth Sadewasser



---

# INTRODUCTION

This guide will show you how to remove and replace the RAM.



## TOOLS:

- [Phillips #1 Screwdriver](#) (1)
  - [iFixit Opening Tools](#) (1)
-

## Step 1 — Battery



- Make sure the laptop is unplugged and powered off.
- Locate the battery latches on the underside of the laptop.

## Step 2



- Slide the right latch to the right until you hear it lock into place.
- Slide the left latch to the left and hold it.

## Step 3



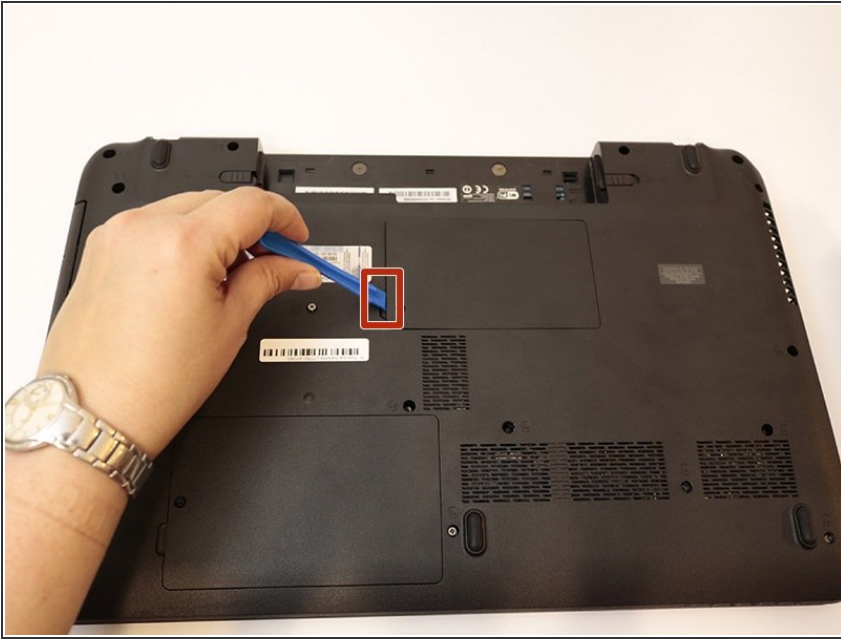
- Slide the battery out towards you.

## Step 4 — RAM



- Use the Phillips #1 screwdriver to remove the one 4.6 mm screw holding on the cover located on the bottom center of the laptop.

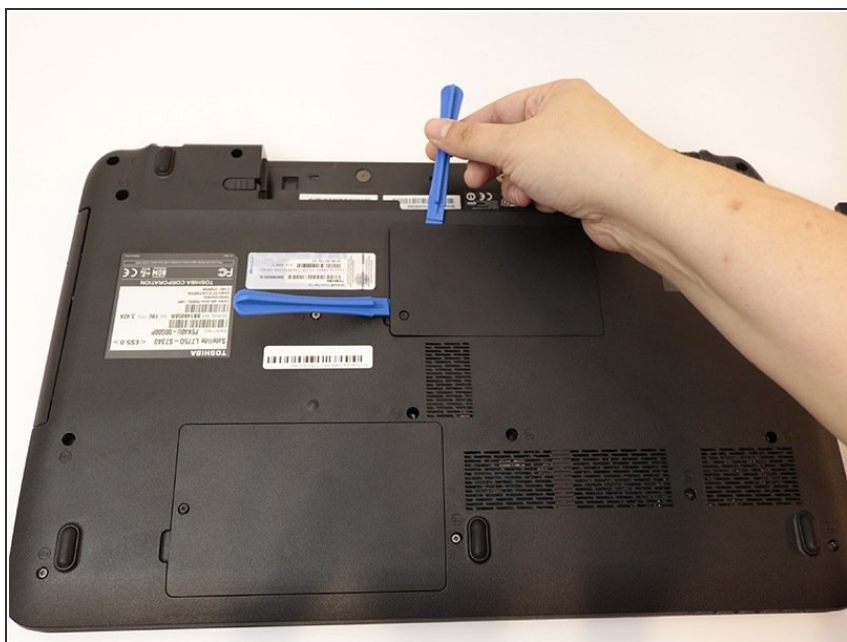
## Step 5



- Use the plastic opening tool to pry open the RAM cover. Wedge the prying tool in, beginning at the indent in the cover.

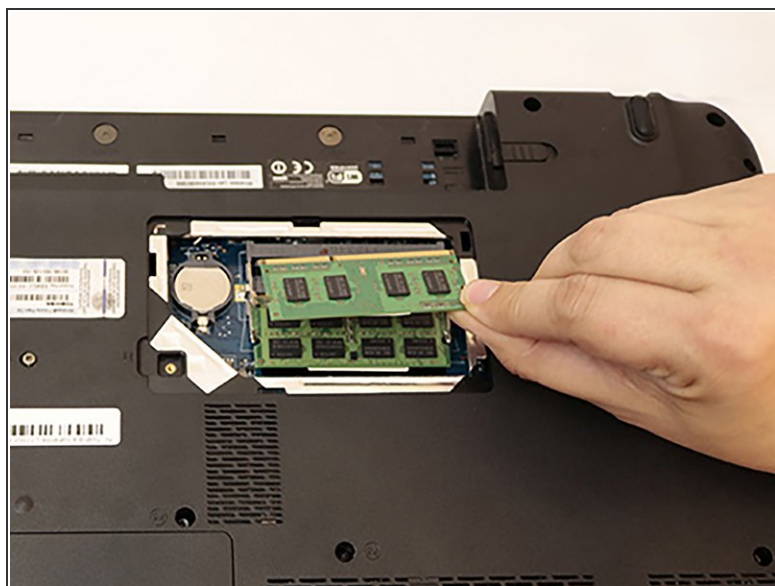
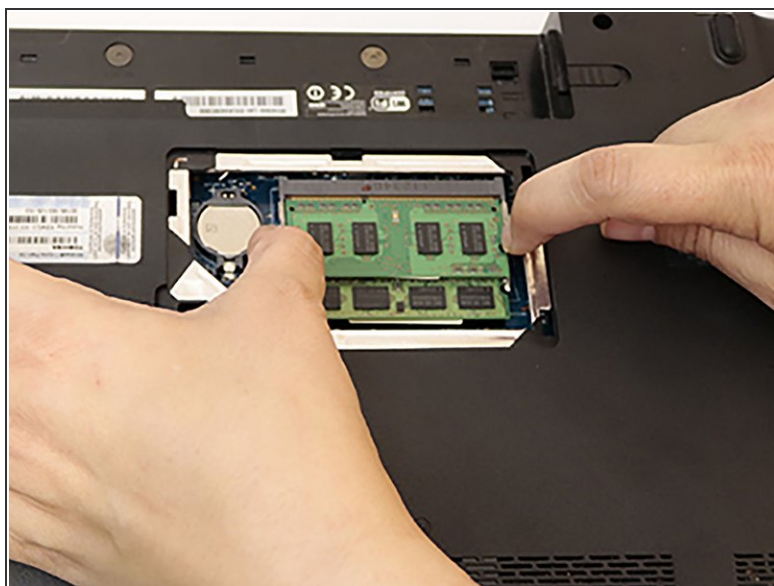


## Step 6



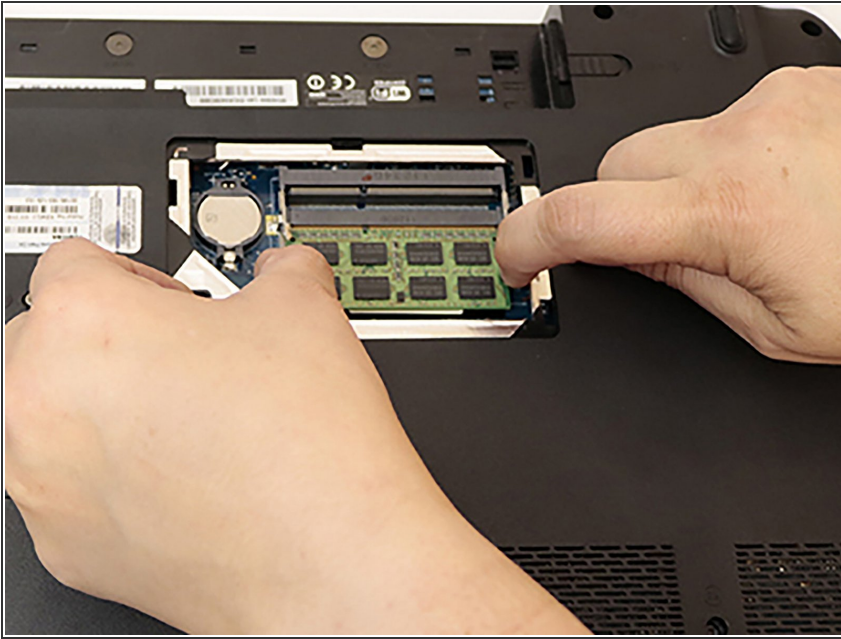
- Use another prying tool to pry up along the edges of the cover. Continue prying up around the edges until the cover is open and remove it.

## Step 7



- Push the two top tabs outwards and the top stick of RAM will pop up. Gently remove the stick of RAM by pulling it out.

## Step 8



- Push the two bottom tabs outwards and the bottom stick of RAM will pop up. Gently remove the bottom stick of RAM by pulling it out.

To reassemble your device, follow these instructions in reverse order.