



Toshiba Satellite L855-S5119 Hard Drive Replacement

Remove and replace the Toshiba Satellite L855-S5119's mounted hard drive.

Written By: Monte Roden



INTRODUCTION

This guide details removing and replacing the hard drive inside a Toshiba Satellite L855-S5119.



TOOLS:

- [Phillips #0 Screwdriver](#) (1)
-

Step 1 — Battery



- Turn the laptop face down to expose the back.
- Locate the battery.

Step 2



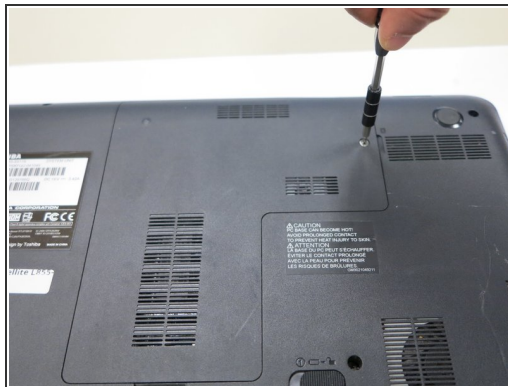
- i** Locate the battery latches. The battery latch mechanism can be compared to a door -- The right latch, when pushed right, unlocks the battery, while the left latch, when pushed left, releases the battery, pushing it out from its container.
- Push the latch on the right to the right to unlock the battery latch locking mechanism.
 - Push the battery latch on the left to the left to unlock the battery.

Step 3



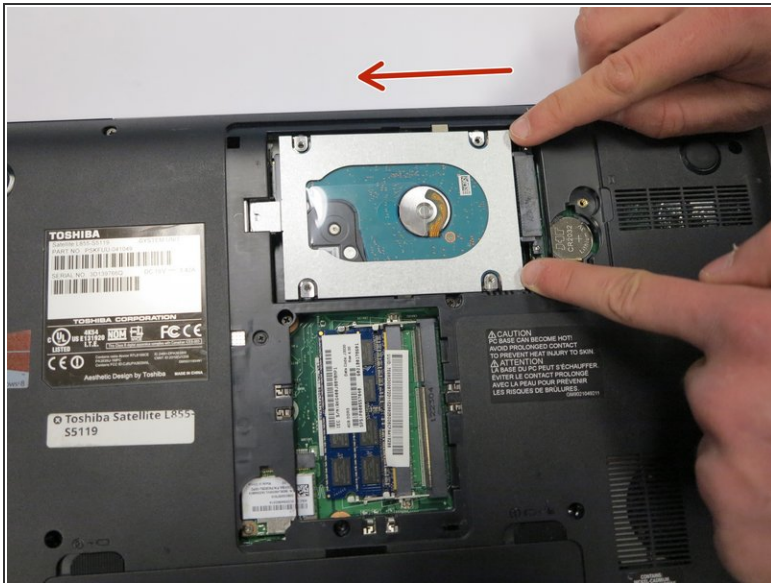
- With the left battery latch pushed left, remove the battery from its port by lifting the battery from the middle of the battery.
- The battery will come free.

Step 4 — Back Plate Removal



- Turn the laptop over to place it top down.
- Use a Phillips #1 screwdriver to remove the screw holding in the back plate. This screw does not come out of the plate.
- Lift the back plate off the laptop, exposing the RAM and Hard Disk.

Step 5 — Hard Drive



- Unscrew the hard drive.
 - ❗ There could be up to five 3mm screws - One on each corner of the hard drive, and one at one end of the hard drive, attaching the drive to the laptop's frame.
- Carefully push the hard drive away from its port. This should not require substantial force.
- Lift the hard drive out.
 - ❗ Some hard drives have a plastic tab, which can be lifted from to remove the hard drive.
 - ❗ Otherwise, take hold of opposite sides of the hard drive and lift the drive straight up.

To reassemble your device, follow these instructions in reverse order.