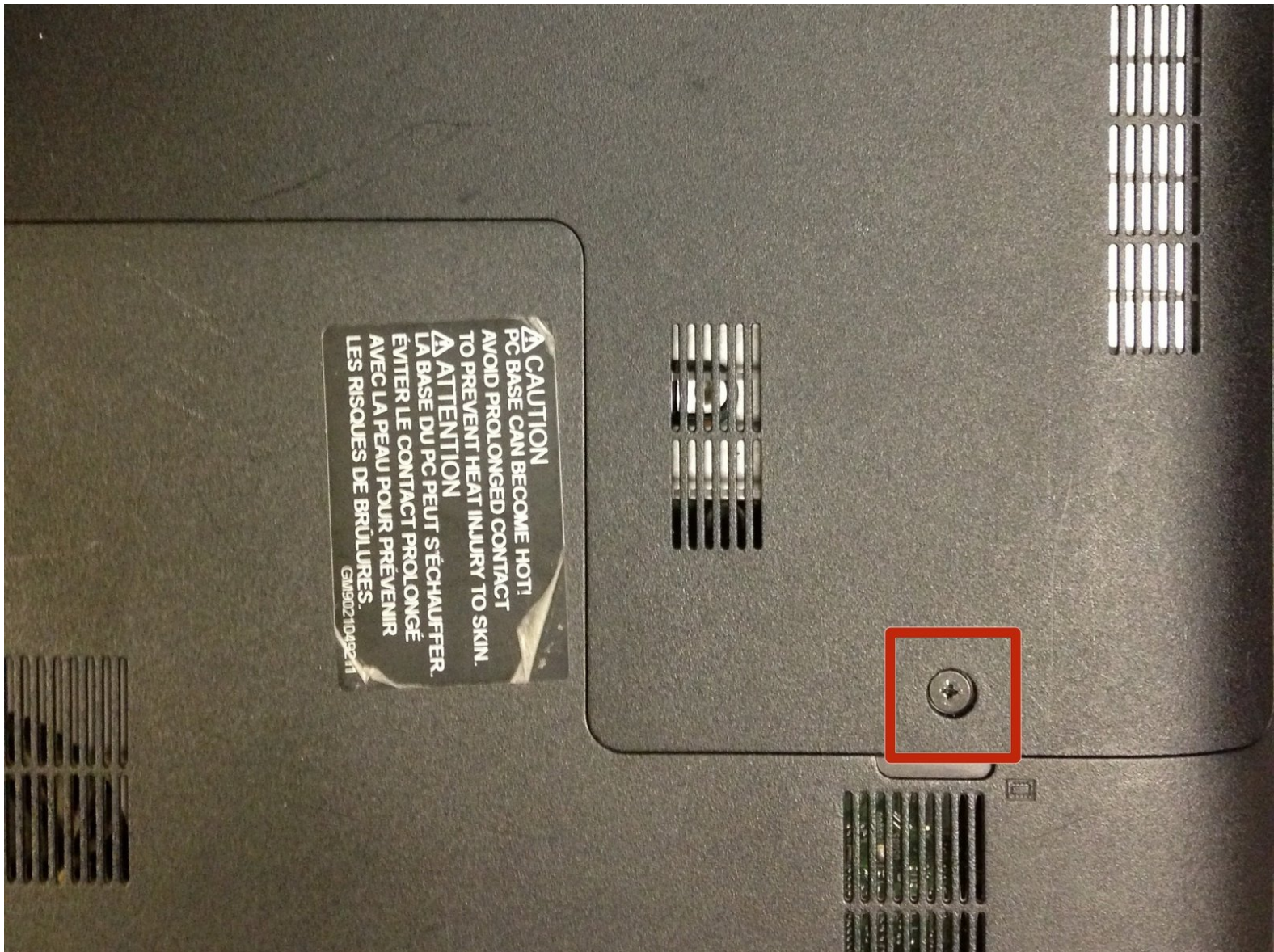




Toshiba Satellite L855-S5210 Keyboard Replacement

Simple guide to replace the keyboard on the Toshiba L855 laptop.

Written By: Trung Dang

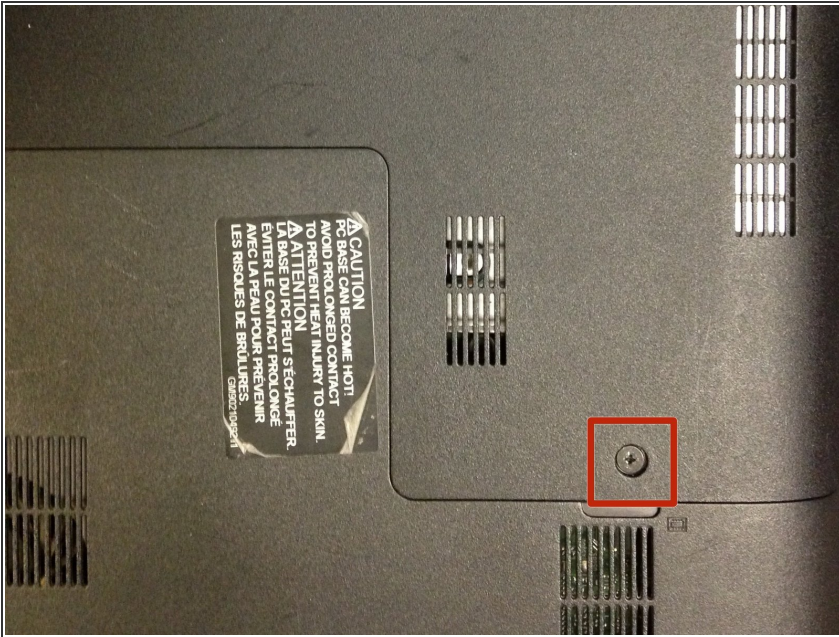




TOOLS:

- [Phillips #00 Screwdriver](#) (1)
 - [Metal Spudger](#) (1)
-

Step 1 — Keyboard



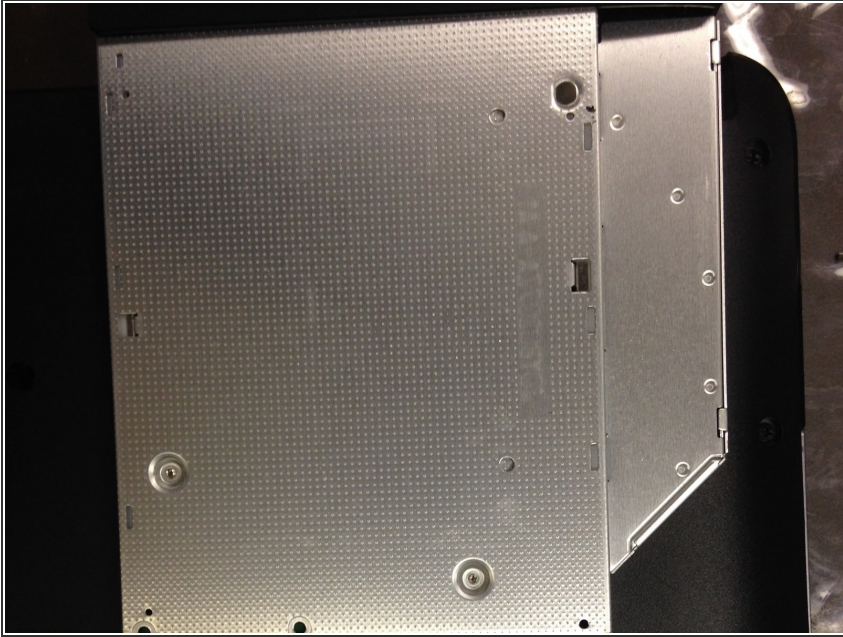
- Remove the screw that secures the hard drive and memory card bay.

Step 2



- Remove the screw that holds the CD/DVD drive in place.

Step 3



- Gently pry and pull the CD/DVD drive from the bay.

Step 4



- There is a cut-out space in the CD/DVD bay. This is where you would use your finger to push and nudge the keyboard from its clip.

Step 5



- Turn the laptop right side up, open the LCD so the keyboard is exposed.
- Firmly push the keyboard upward from the space in the CD/DVD bay. You should feel the clip being released from its hinge.

Step 6



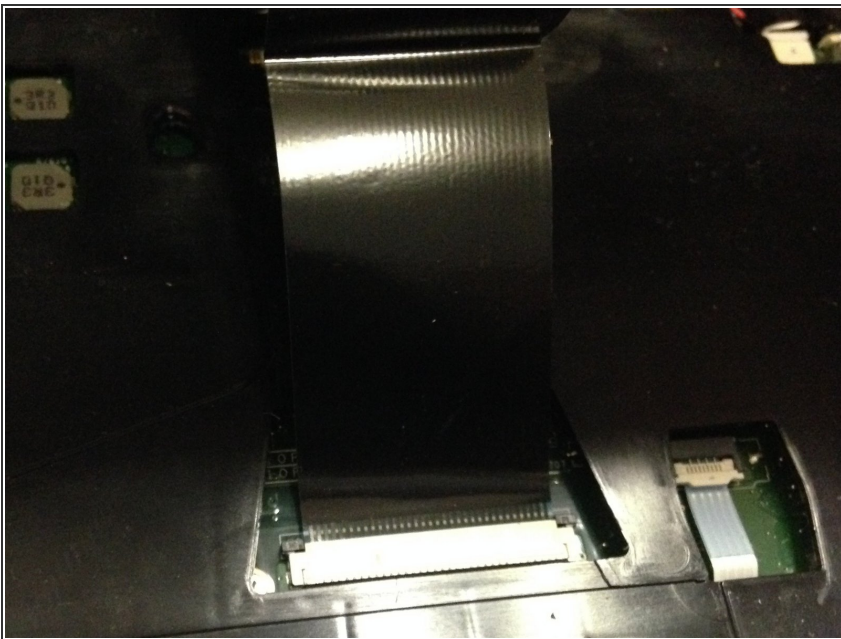
- Use a thin blade knife or spudger to release all the clips along the bottom edge of the keyboard.

Step 7



- After all the clips have been released, simply pull the keyboard downward to remove it from the top hinges.

Step 8



- Remove the ribbon cable from the socket to remove the old keyboard.
- To install the new keyboard, insert the ribbon cable and press the clips back in place.

To reassemble your device, follow these instructions in reverse order.