



Toshiba Satellite L875D-S7210 Keyboard Replacement

Use this guide to replace the keyboard in your Toshiba Satellite L875D-S7210.

Written By: Ian M Sloop



INTRODUCTION

If your keys don't do anything when you press them, or if it's dirty and keys are getting stuck, you can use this guide to help you replace the keyboard. You can use the plastic opening tools instead of the metal spudger to prevent any damage to the device.



TOOLS:

- [Metal Spudger](#) (1)
-

Step 1 — Keyboard



- Starting on either side, use a metal spudger to pry out the long, narrow plastic covering at the bottom of the keyboard.

Step 2



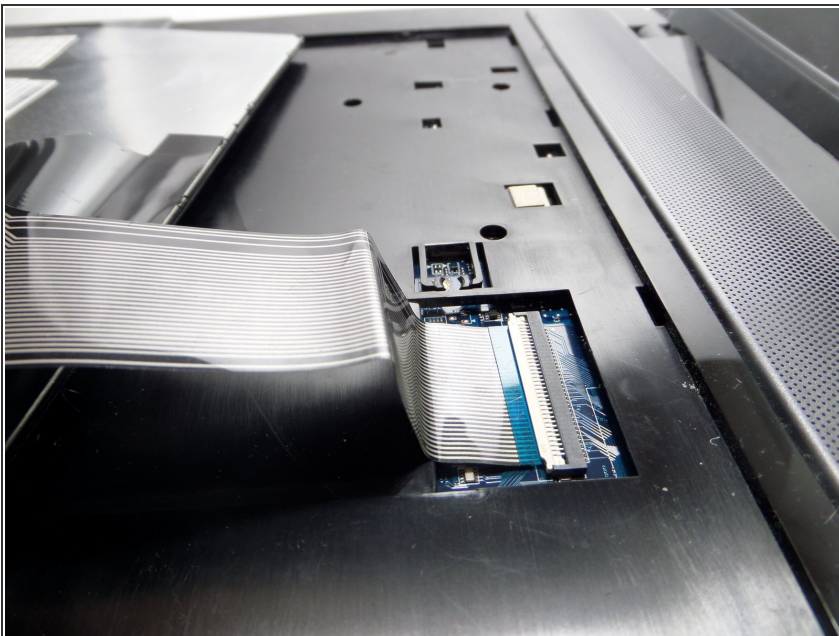
- Gently remove the plastic strip from the keyboard.

Step 3



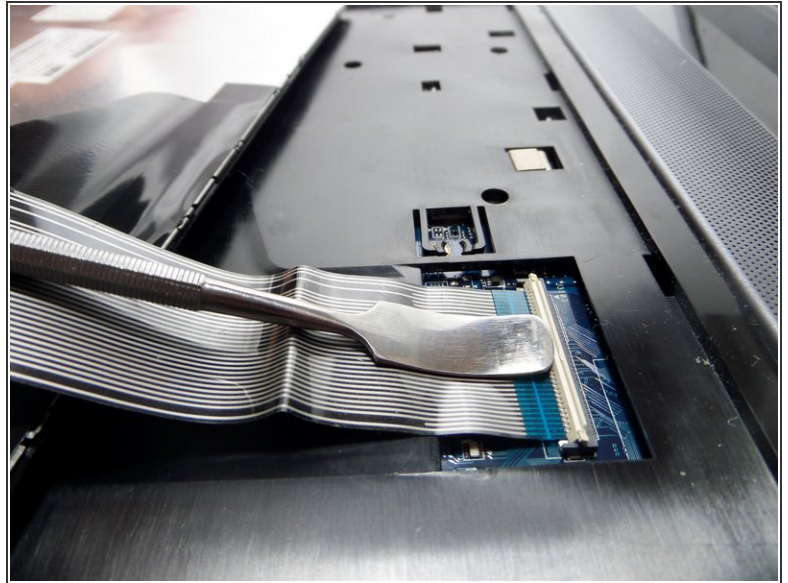
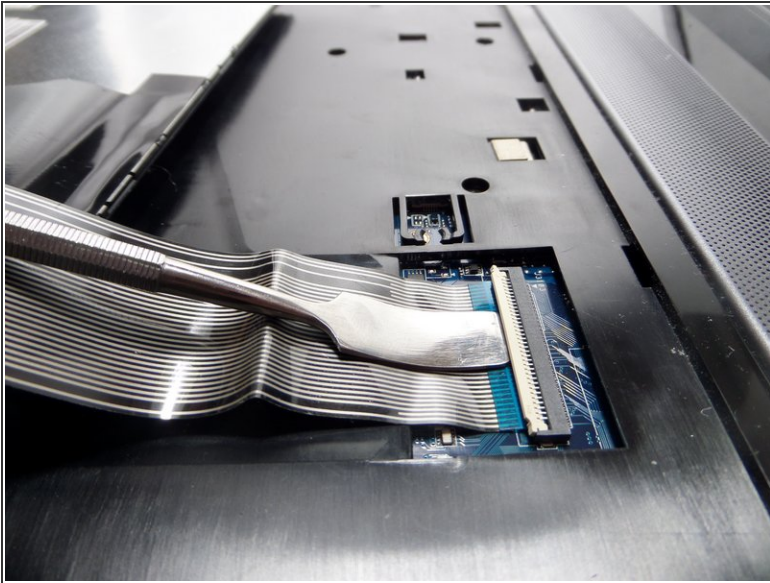
- Using your hands, gently lift the keyboard out of the computer. The keyboard will still be attached to the computer so be careful not to pull too hard.

Step 4



- Find the ribbon cable that connects the keyboard to the computer.

Step 5



- Place the metal spudger underneath the lockable connector.
- Lift up to unlock the lockable connector
- Remove the ribbon cable from the keyboard and you will have successfully removed from your laptop. Reverse this process to attach the new keyboard.

To reassemble your device, follow these instructions in reverse order.