



Toshiba Satellite M305D-S4829 Keyboard Replacement

This guide will assist in the removal of the keyboard. A Philips #0 screwdriver and/or spudger will be necessary.

Written By: Michael Jensen



This document was generated on 2019-10-04 01:32:39 AM (MST).



TOOLS:

- [Phillips #0 Screwdriver](#) (1)
-

Step 1 — Battery



- Unlatch the battery by pushing outward on both latches.

Step 2



- Slide battery out.

Step 3 — Keyboard



- Remove the five "F2" screws with a Phillips #0 screwdriver.

Step 4



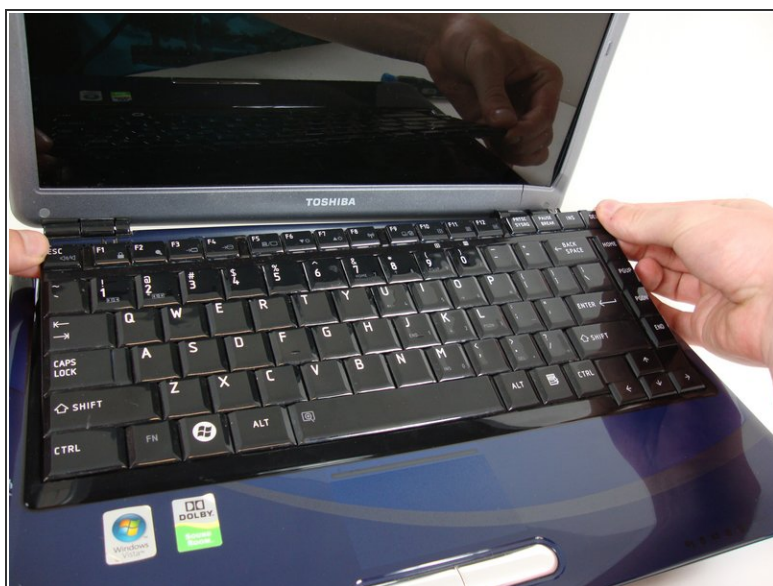
- Insert the plastic opening tool above the F1 key.
- Apply upward pressure until the black plastic strip snaps off. The entire strip will easily come off from left to right.

Step 5



- Find the screws above the F1 and INS keys.
- Unscrew both screws with a Phillips #0 screwdriver.

Step 6



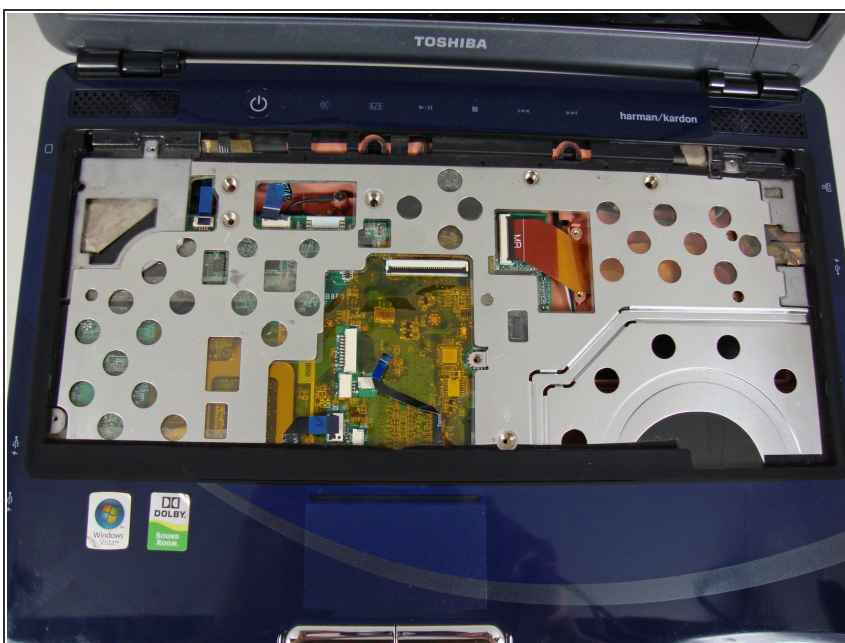
- Slowly lift the top edge of the keyboard out with your fingers.
- The ribbon cable located on the back of the keyboard will become accessible.

Step 7



- Locate the black ribbon cable flap.
- Detach flap with plastic opening tool. The ribbon cable will become free.

Step 8



- Your keyboard has now been successfully removed.

To reassemble your device, follow these instructions in reverse order.