



Toshiba Satellite M305D-S4829 Screen Replacement

This is a guide to replace the laptop screen. If the lights on your laptop turn on, and the rest of the laptop is in general good condition, but your screen is cracked and/ or will not display, you can replace it.

Written By: Allison Collard



INTRODUCTION

This guide will show you how to replace the screen of your laptop. Be sure to have an iFixit toolkit handy, or at the very least, a Phillips #0 screwdriver.



TOOLS:

- [Phillips #0 Screwdriver](#) (1)
-

Step 1 — Battery



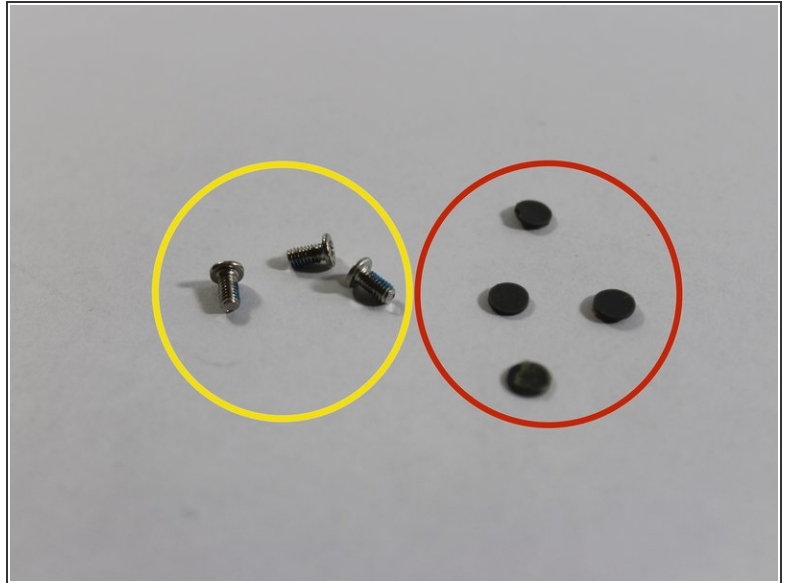
- Unlatch the battery by pushing outward on both latches.

Step 2



- Slide battery out.

Step 3 — Screen



- Remove the four rubber coverings at the corners of the screen frame to access the screws behind them.
- Using a Phillips #0 screwdriver, remove the four screws at the corners of the screen frame.

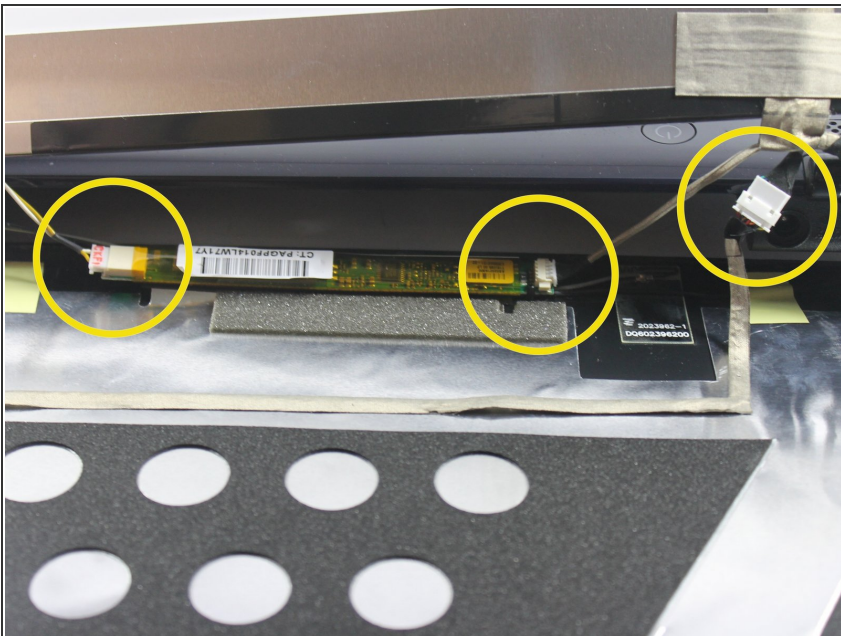
Step 4



- Now you need to remove the bezel. This is the plastic frame around the screen. Gently pull it forward, and then upward to unsnap it from where it is connected at the hinges.

i The second picture shows what the laptop will look like thus far.

Step 5



- Turn the laptop around so that you can view the lid. Gently pull the lid away from the screen so that you can view the white clips near the base of the screen, as shown in the picture.

- Un-clip the three connections to disconnect the wiring.

i Unsnap the lid as well at this point. It pulls away just like the bezel (the plastic frame) did.

Step 6



- Remove the tape at the spots shown in the picture to detach the screen from the ribbon.

Step 7



- Turn the laptop so the screen faces you again. Remove this screw, and the corresponding screw on the left hand side.
- Remove the four screws on the sides of the metal frame, located at the upper right and left, as well as the lower right and left.
- ⓘ The screen may now be removed, and the replacement screen may be installed.

To reassemble your device, follow these instructions in reverse order.