



Toshiba Satellite M45 Display Replacement

Written By: Aryn Pauly



INTRODUCTION

This guide will demonstrate how to dismantle and replace components of your computers display (screen).



TOOLS:

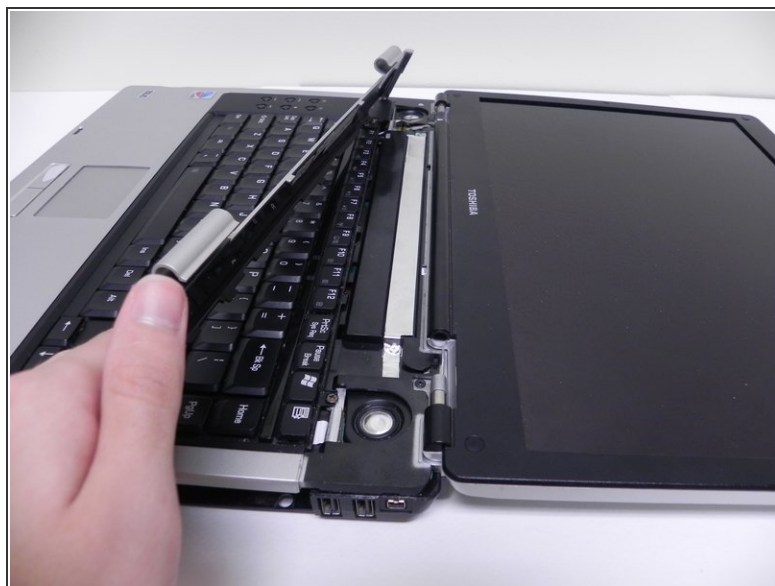
- [Phillips #1 Screwdriver](#) (1)
 - [Phillips #00 Screwdriver](#) (1)
 - [iFixit Opening Tools](#) (1)
-

Step 1 — Display



- Using a bladed tool, gently pry up the display hinge cover.

Step 2



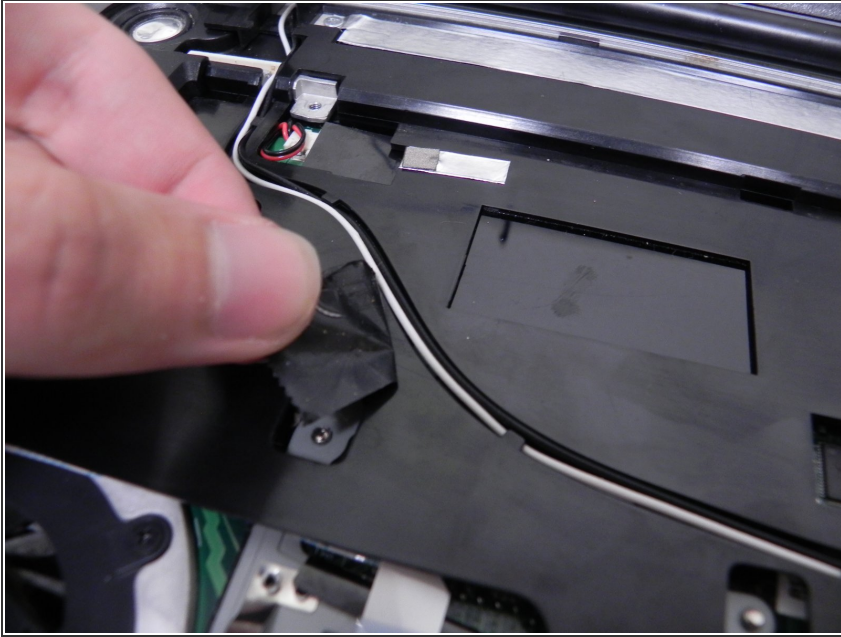
- After folding the display completely back, lift up on the display hinge cover and remove it.

Step 3



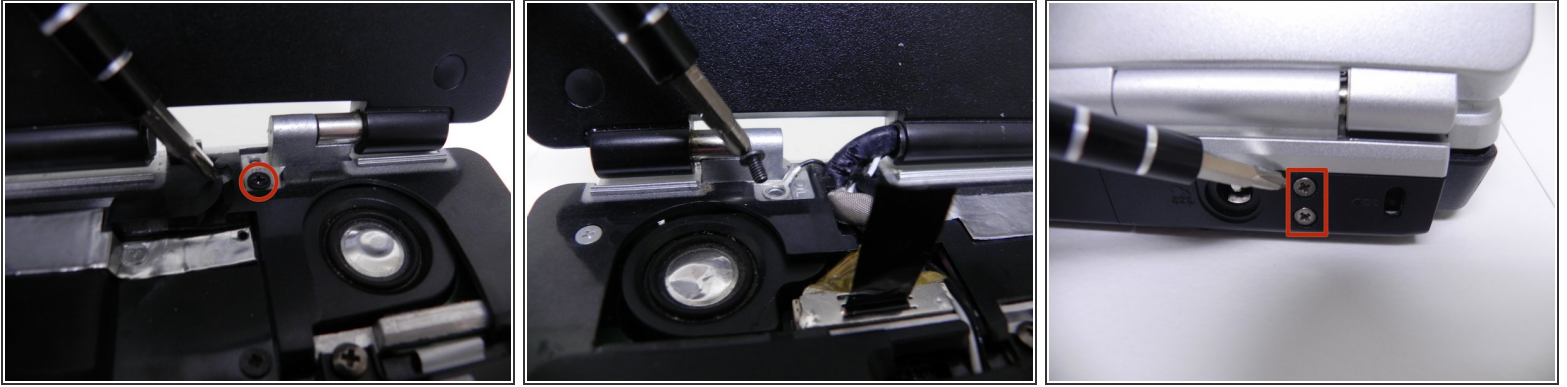
- Remove the keyboard. For keyboard removal instructions, see the keyboard guide here: [Toshiba Satellite M45 Keyboard Replacement](#)

Step 4



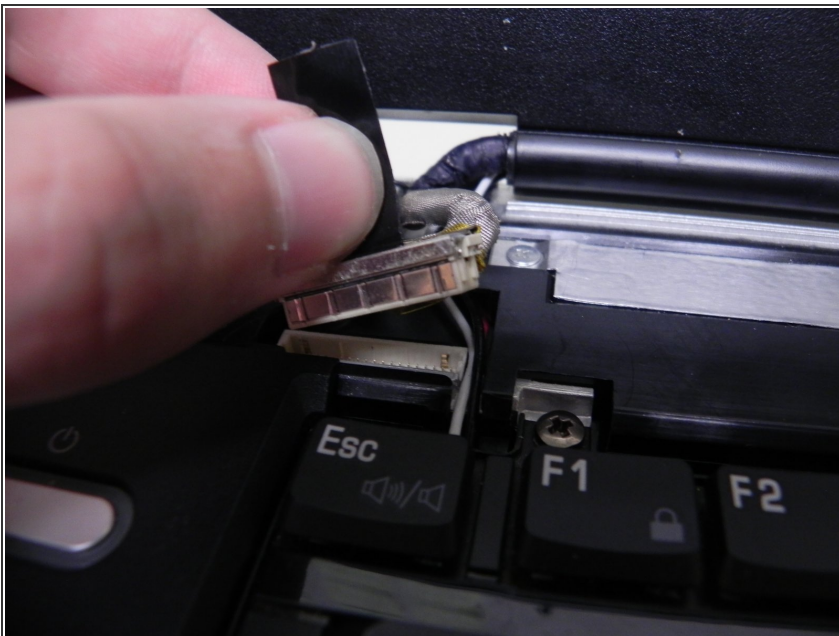
- Remove the black electrical tape covering the black-and-white antenna cable. There will be 2-3 pieces of tape.
- After the tape has been removed, close the laptop display, flip the laptop over, and disconnect the black-and-white antenna cables from the WiFi Card.
- For information about accessing the WiFi Card, see the WiFi Guide here: [Toshiba Satellite M45 Wi-Fi Card Replacement](#)
- Once the antenna cables are disconnected from the modem card, flip the laptop back over and open the display.

Step 5



- Remove the two screws securing the display hinges with a #1 size Phillips head screwdriver. It is recommended to keep the screws in a small cup so that you don't lose them.
- Remove the four screws on the back of the laptop holding the screen in place with a #1 screwdriver. There are two on each side.

Step 6



- Remove the display's video connector by gently pulling up.
- Remove the black-and-white antenna cable from the groove.
- Your display can now be removed.

To reassemble your device, follow these instructions in reverse order.