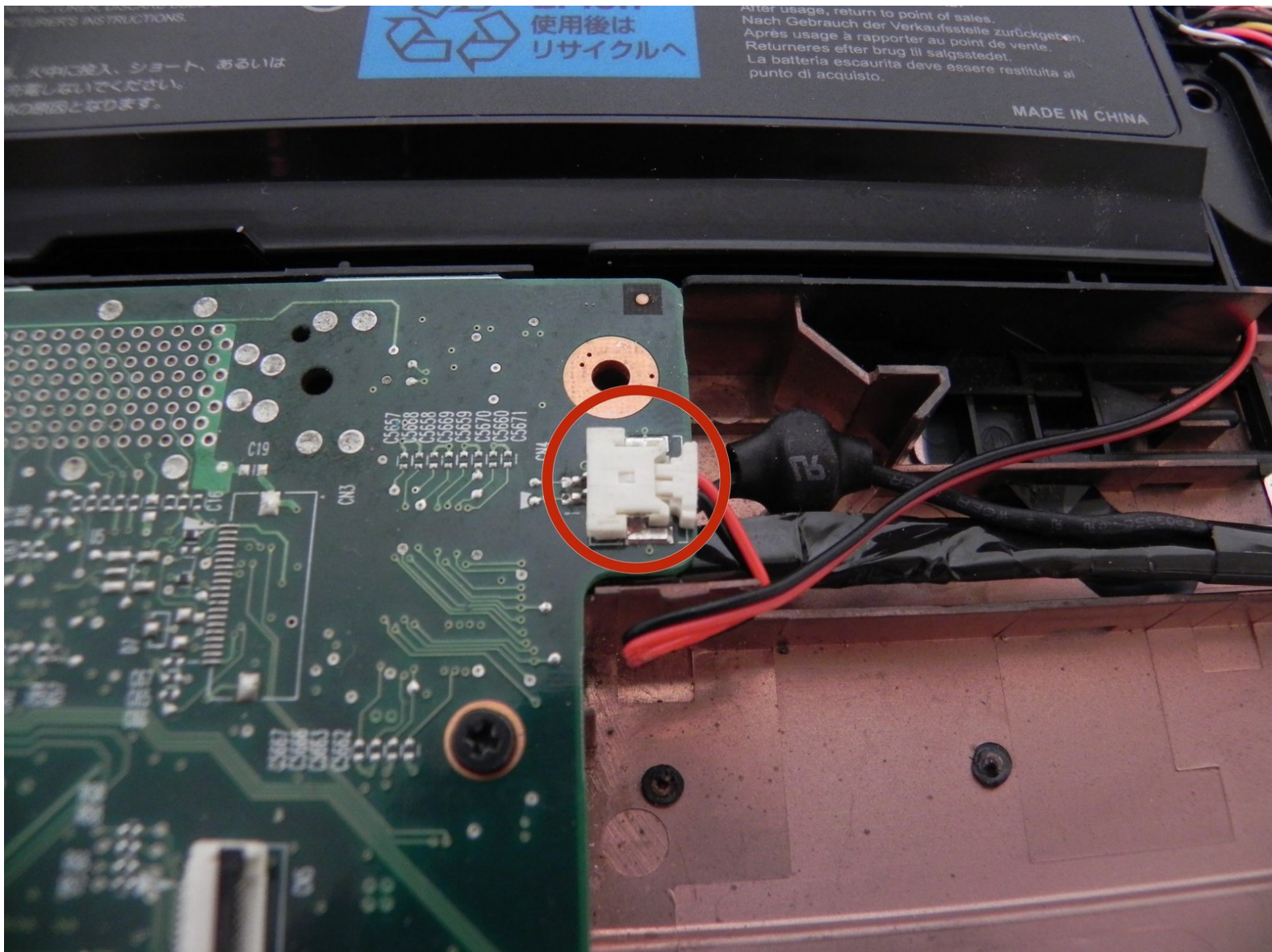




# Toshiba Satellite M45 Speakers Replacement

Replacing the internal speakers on a Toshiba Satellite M45.

Written By: Stephen



## INTRODUCTION

This is a very difficult guide by the average user and is recommended to use headphones or external speakers.

---

### TOOLS:

- [Phillips #1 Screwdriver](#) (1)
  - [Phillips #00 Screwdriver](#) (1)
  - [iFixit Opening Tools](#) (1)
-

## Step 1 — Battery



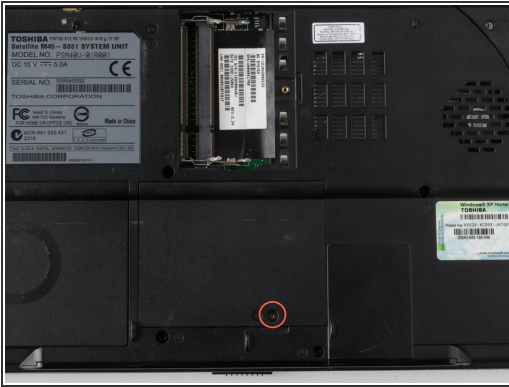
- If the device is still running, please turn the computer off properly and then disconnect the power supply from the power supply port in the back of the computer.
- Remove battery before beginning any work to reduce electrical shock and to prevent damage to the electrical components.
- Locate and slide the 2-battery locks to disconnect the battery.
- Remove the battery by sliding it out away from the computer (horizontal with the casing).

## Step 2 — RAM



- Use a #1 Phillips head screwdriver to remove the screws on the RAM's cover panel, as seen in image.
- Then, use a flat edge tool to pry the cover off, as seen in image.
- Use your fingers to push the RAM tabs, as seen in image, that secure the RAM outward (away from the RAM). The RAM should then pop up.
- Finally, gently pull the RAM away from the connection. (Repeat this process until all the RAM has been removed from the device).

## Step 3 — Wi-Fi Card



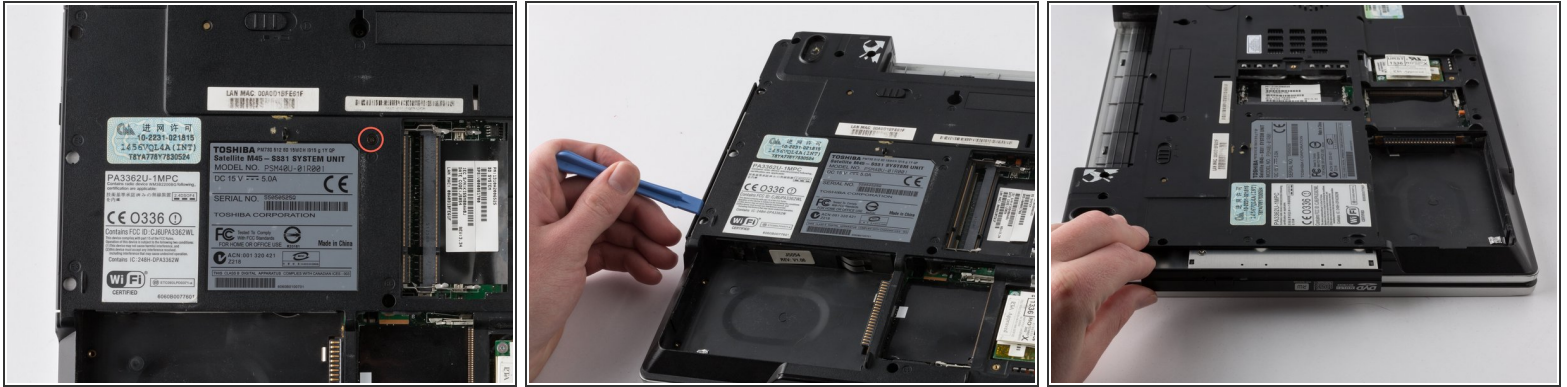
- Remove the panel screw labeled with a #1 Phillips head screwdriver as indicated in the picture, then use a flat edge tool to pry the cover off.
- The hardware to the left (labeled) can be easily removed by disconnecting the black and white wires and pushing the tabs that secure it (located on the side) outwards.
- Pull the Wi-Fi card out from the device at a slight angle (horizontal with the casing).

## Step 4 — Hard Drive



- Remove the hard drive screw labeled with a #1 Phillips head screwdriver as indicated in the picture, then use a flat edge tool to pry the cover off.
- Use the plastic flap to pull the hard drive out of its slot.

## Step 5 — Optical Drive



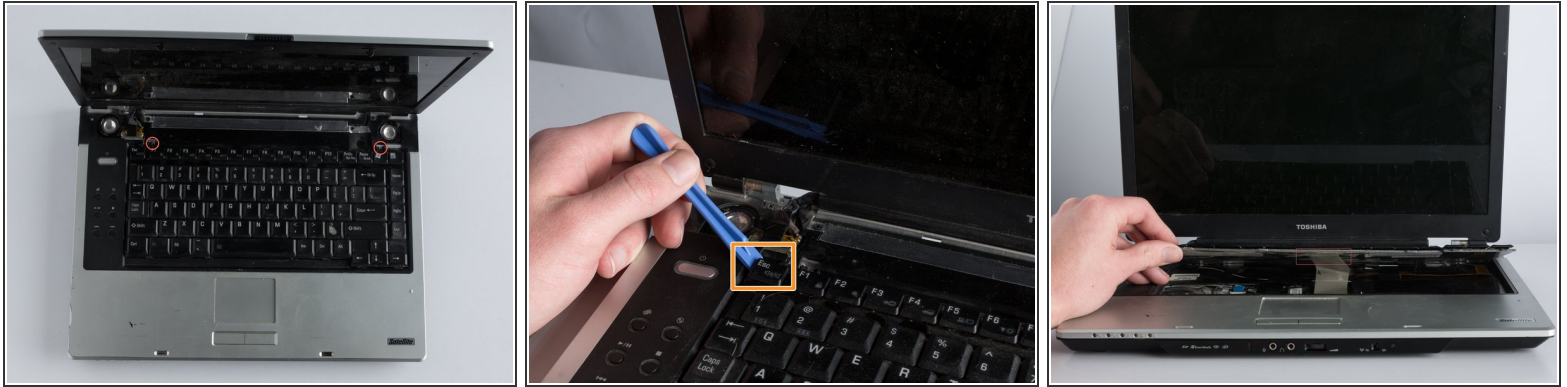
- Remove the ODD screw with a #1 Phillips head screwdriver as indicated in the picture.
- Using a flat edge tool, pry it the drive out of it slot from the side of the casing. You can then use your hands to continue pulling the rest the way out of its slot.

## Step 6 — Keyboard



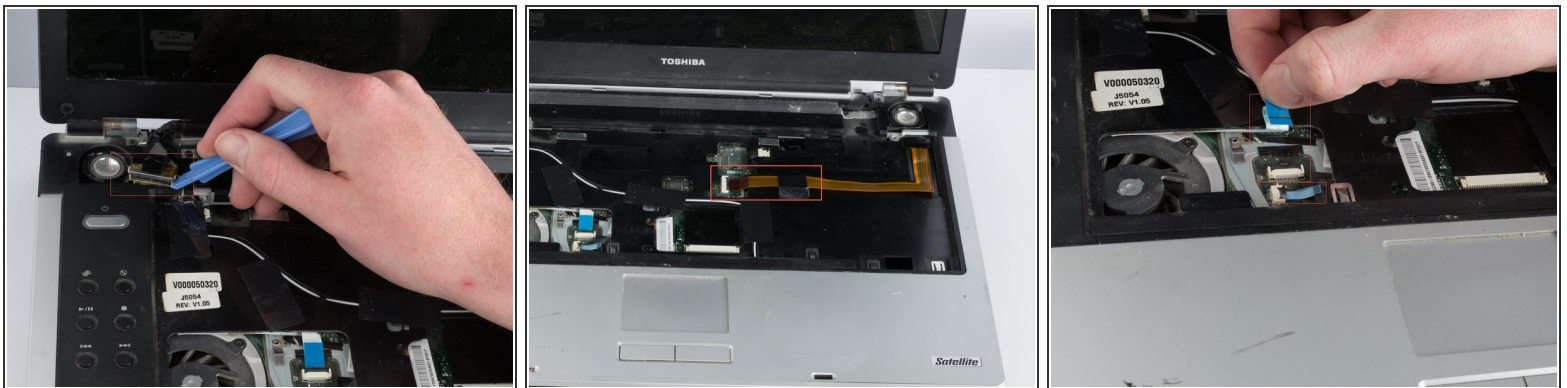
- Carefully pry the panel above the keyboard from both sides of the laptop using the iFixit opening tool.
- Push back the screen until it is horizontal with the laptop.
- Gently remove the clips that connect the panel to the screen.

## Step 7



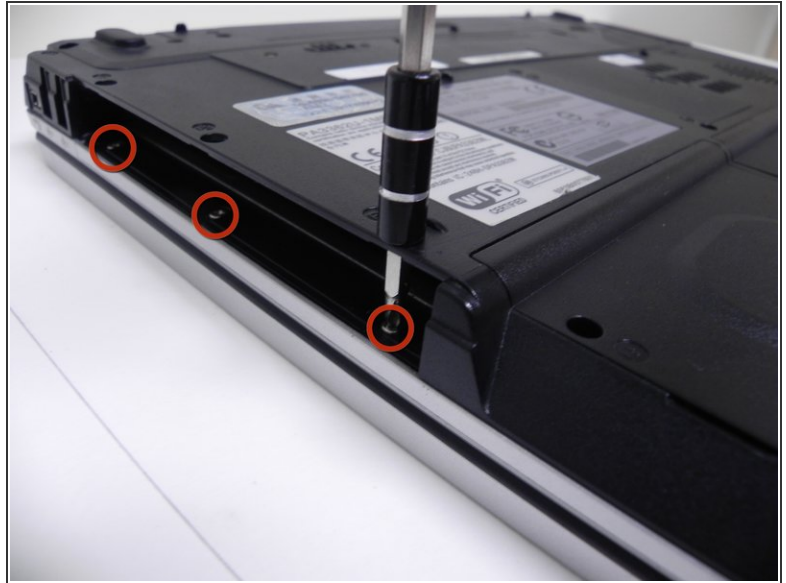
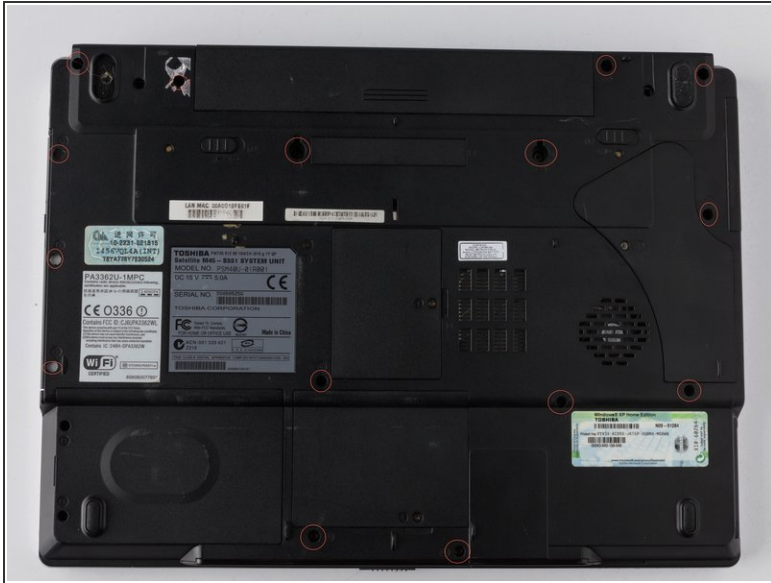
- Remove the two screws using a Phillips #1 screwdriver.
  - Gently pry the keyboard from the laptop using the iFixit opening tool.
  - Slowly lift the keyboard away from the laptop until you are able to remove the ribbon that connects to the laptop.
- ⚠ Ensure you remove the keyboard slowly to avoid damaging the ribbon cable.

## Step 8 — Motherboard



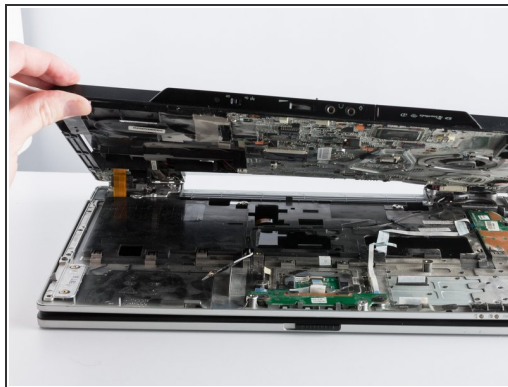
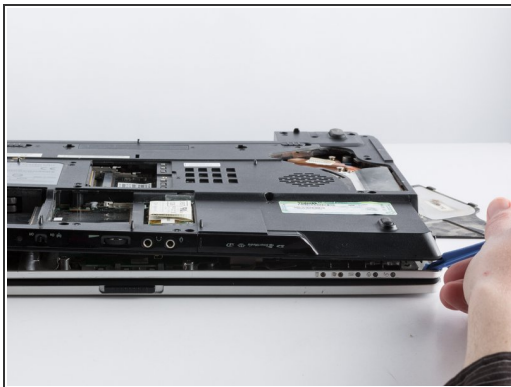
- Disconnect the video cable near the left speaker slowly but firmly pulling upwards.
- Disconnect the brown ribbon that is located directly in the middle of where the keyboard one was away from the connector.
- Disconnect the 2-other white ribbons located near the top right half of the keyboard section pulling firmly away from the connector.

## Step 9



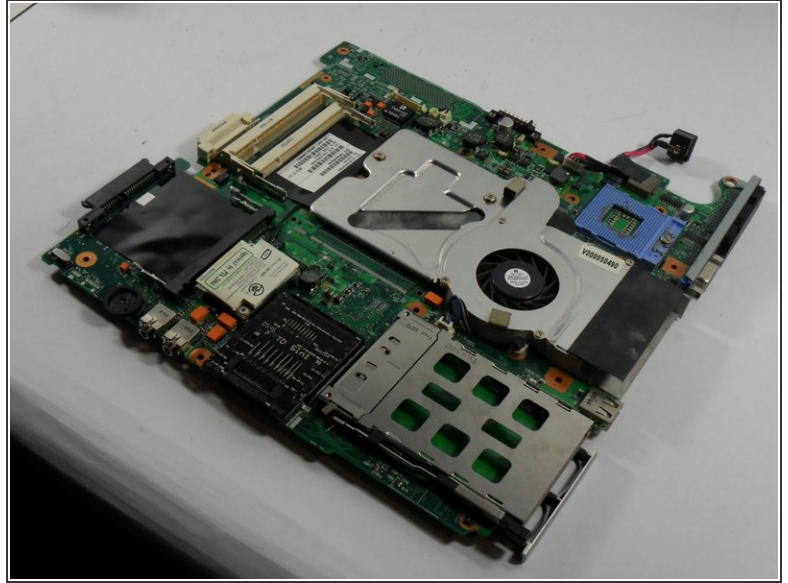
- Unscrew all the screws labeled using a micro-screwdriver turning counterclockwise.
- There are 3-additional screws that need to be removed through the 3-holes located in the optical drive.

## Step 10



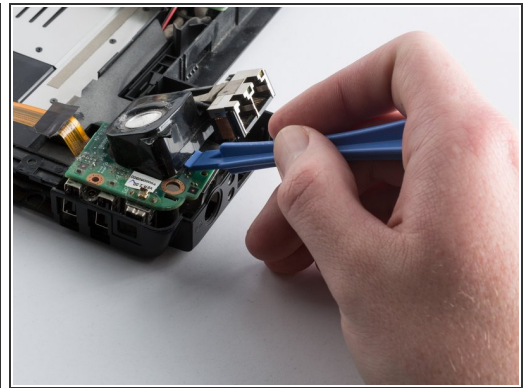
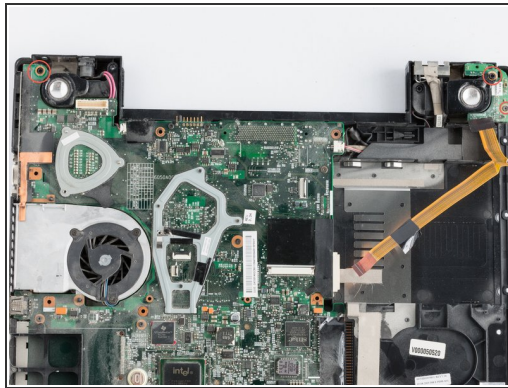
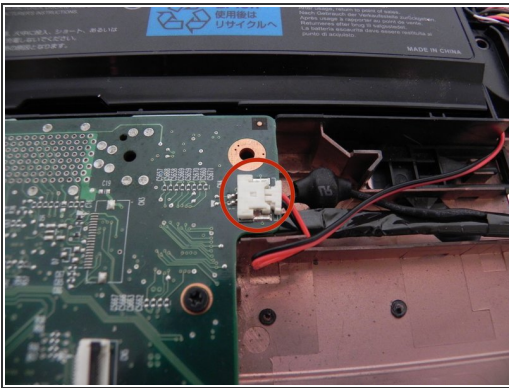
- Using a flat-edge tool begin to pry away the case apart and slowly pulling upward as there is a white ribbon that need to be removed.
- Make sure to completely untape the largest white ribbon, and let it slide through the top half of the case as you lift it.

## Step 11



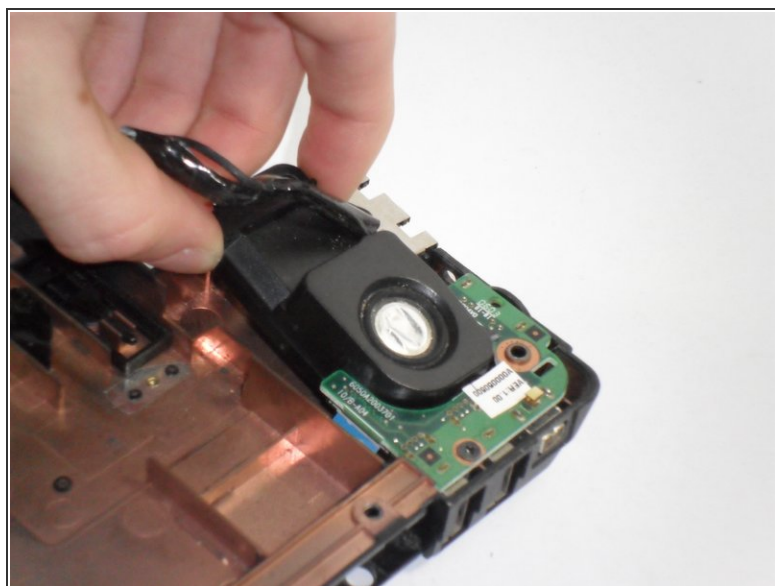
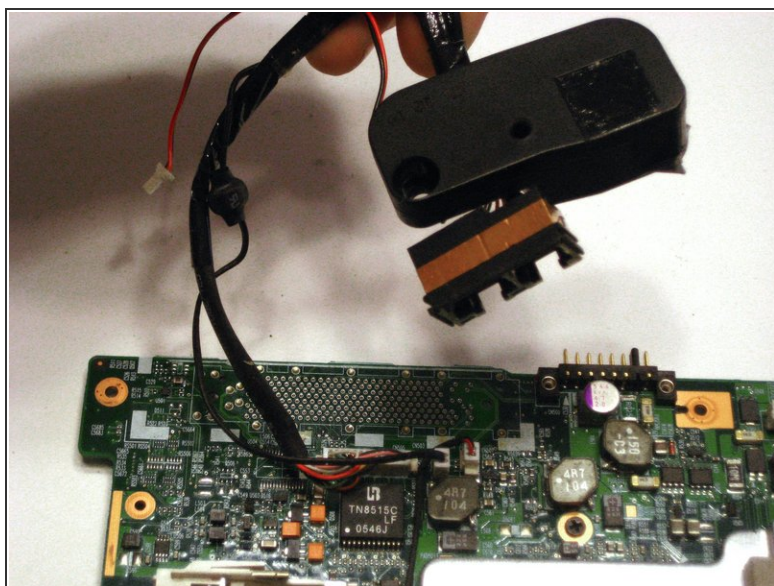
- Now lift out the motherboard. Be careful not to rip any of the pieces out, just wiggle them out.

## Step 12 — Speakers



- Located near the upper edges of the motherboard you will find the 2-speaker wires that trace to the speakers. You will see these white tab with black and red wires.
- Unscrew the 2-screws located above the speakers to remove them. Slowly pull up on the speakers as there are other port connectors are located near the wiring.

## Step 13



- To remove the left speaker follow the motherboard repair guide to complete this step to keep this guide concise.
- Reverse the order after installing the new speakers.

To reassemble your device, follow these instructions in reverse order.