



# Toshiba Satellite M45 Teardown

This guide details how to tear down the laptop from start to finish.

Written By: Bobby Davis

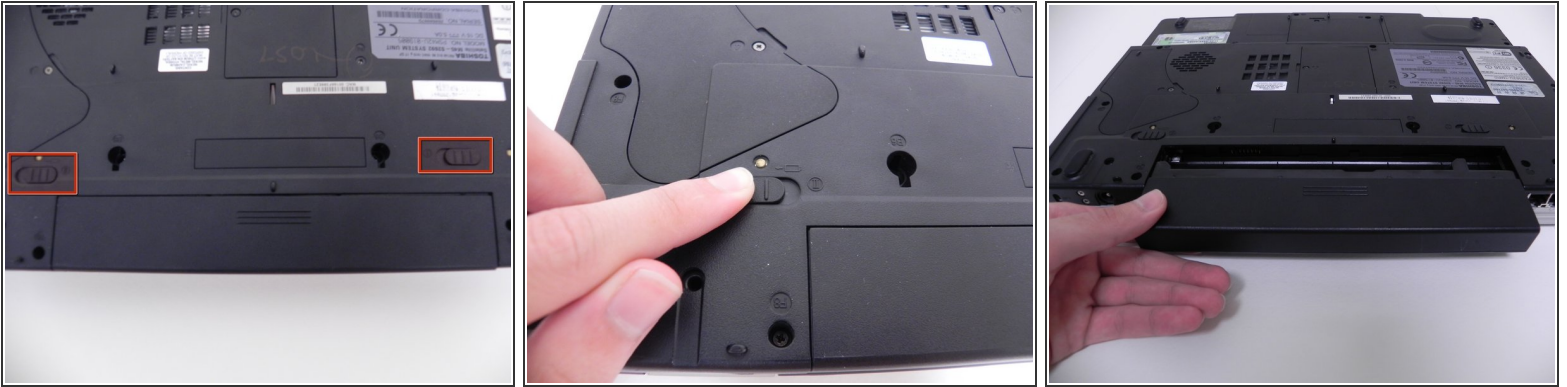




## TOOLS:

- [Phillips #1 Screwdriver](#) (1)
- [Phillips #00 Screwdriver](#) (1)
- [iFixit Opening Tools](#) (1)

## Step 1 — Battery



- If the device is still running, please turn the computer off properly and then disconnect the power supply from the power supply port in the back of the computer.
- Remove battery before beginning any work to reduce electrical shock and to prevent damage to the electrical components.
- Locate and slide the 2-battery locks to disconnect the battery.
- Remove the battery by sliding it out away from the computer (horizontal with the casing).

## Step 2 — Optical Drive



- Remove the ODD screw with a #1 Phillips head screwdriver as indicated in the picture.
- Using a flat edge tool, pry it the drive out of it slot from the side of the casing. You can then use your hands to continue pulling the rest the way out of its slot.

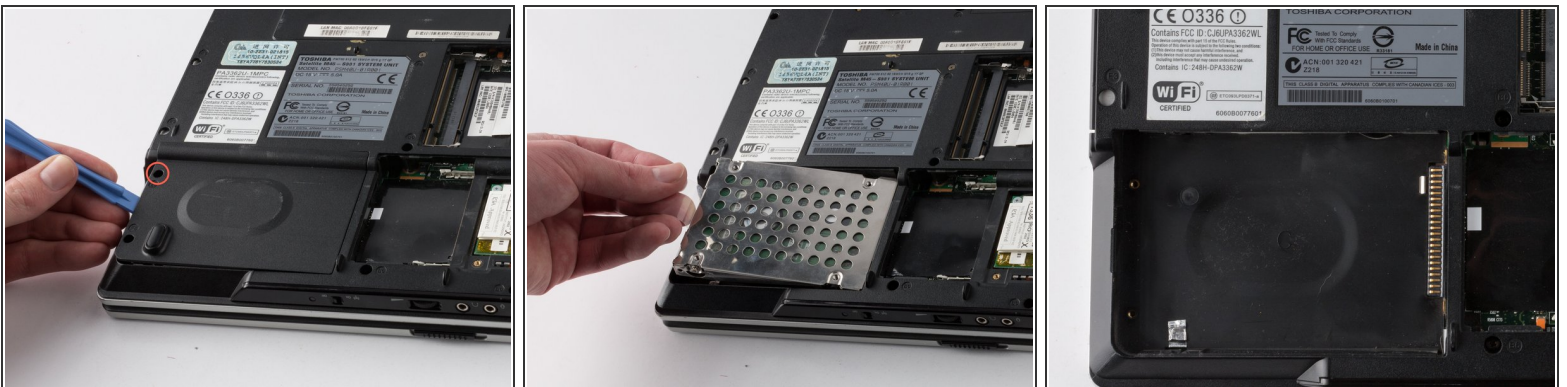


## Step 3 — RAM



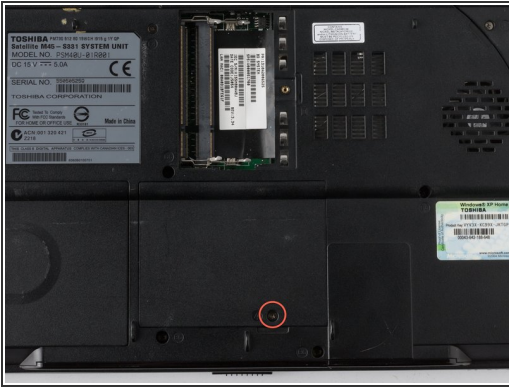
- Use a #1 Phillips head screwdriver to remove the screws on the RAM's cover panel, as seen in image.
- Then, use a flat edge tool to pry the cover off, as seen in image.
- Use your fingers to push the RAM tabs, as seen in image, that secure the RAM outward (away from the RAM). The RAM should then pop up.
- Finally, gently pull the RAM away from the connection. (Repeat this process until all the RAM has been removed from the device).

## Step 4 — Hard Drive



- Remove the hard drive screw labeled with a #1 Phillips head screwdriver as indicated in the picture, then use a flat edge tool to pry the cover off.
- Use the plastic flap to pull the hard drive out of its slot.

## Step 5 — Wi-Fi Card



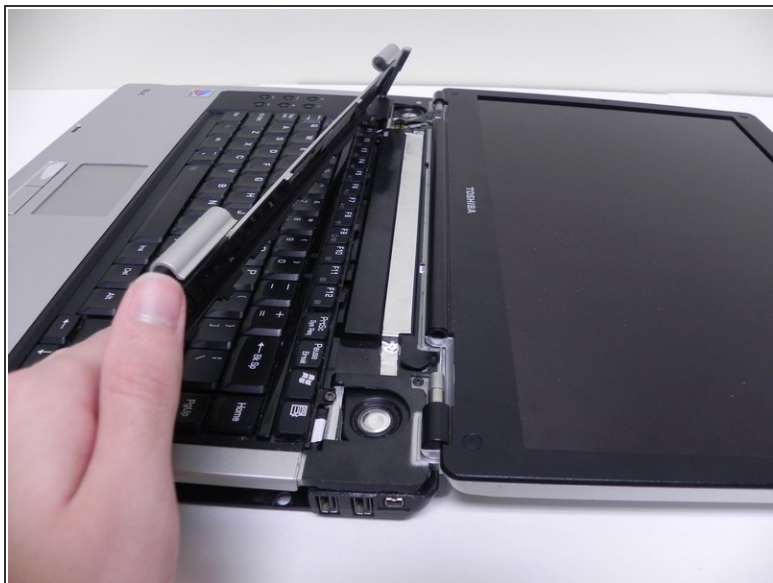
- Remove the panel screw labeled with a #1 Phillips head screwdriver as indicated in the picture, then use a flat edge tool to pry the cover off.
- The hardware to the left (labeled) can be easily removed by disconnecting the black and white wires and pushing the tabs that secure it (located on the side) outwards.
- Pull the Wi-Fi card out from the device at a slight angle (horizontal with the casing).

## Step 6 — Display



- Using a bladed tool, gently pry up the display hinge cover.

## Step 7



- After folding the display completely back, lift up on the display hinge cover and remove it.

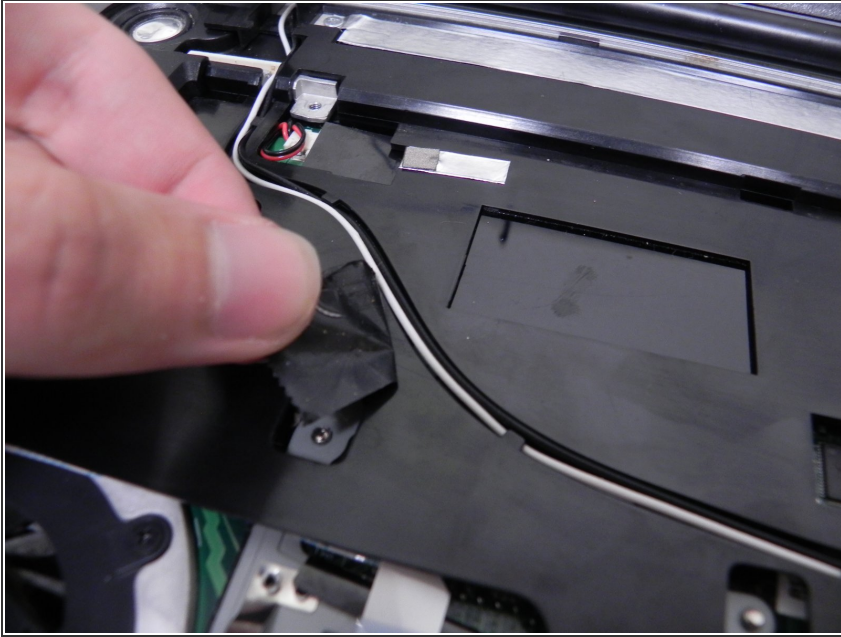


## Step 8



- Remove the keyboard. For keyboard removal instructions, see the keyboard guide here: [Toshiba Satellite M45 Keyboard Replacement](#)

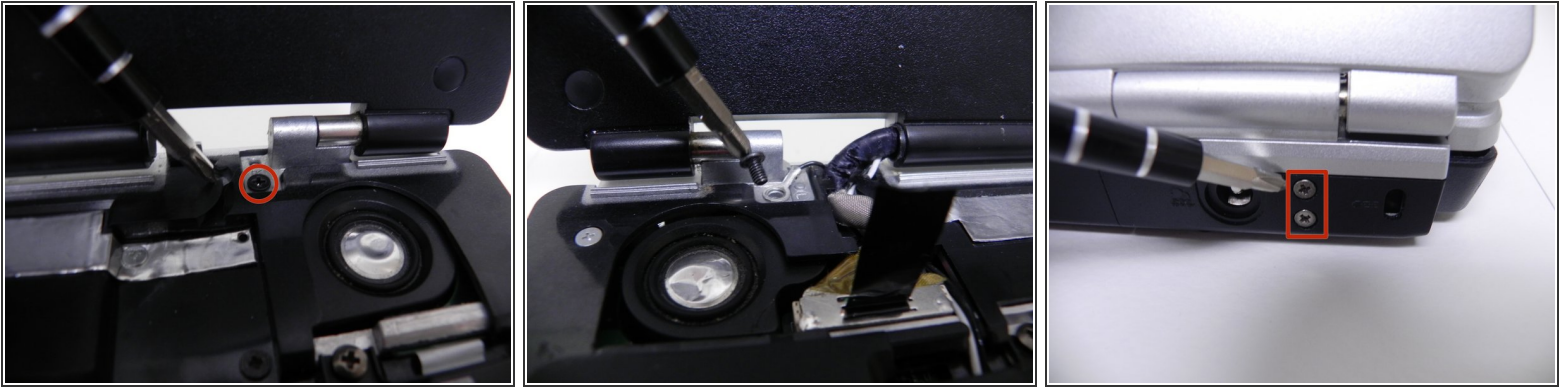
## Step 9



- Remove the black electrical tape covering the black-and-white antenna cable. There will be 2-3 pieces of tape.
- After the tape has been removed, close the laptop display, flip the laptop over, and disconnect the black-and-white antenna cables from the WiFi Card.
- For information about accessing the WiFi Card, see the WiFi Guide here: [Toshiba Satellite M45 Wi-Fi Card Replacement](#)
- Once the antenna cables are disconnected from the modem card, flip the laptop back over and open the display.



## Step 10



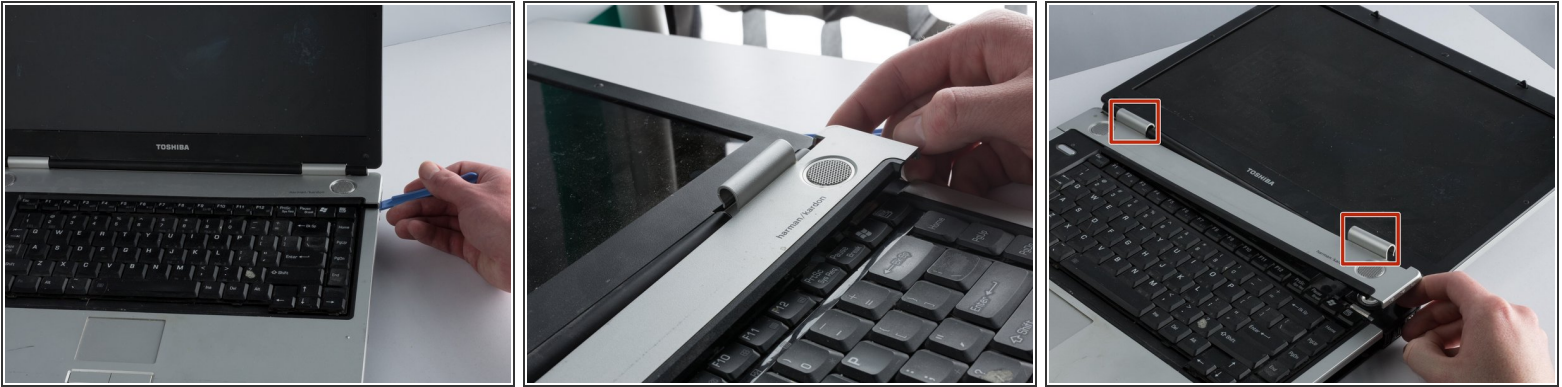
- Remove the two screws securing the display hinges with a #1 size Phillips head screwdriver. It is recommended to keep the screws in a small cup so that you don't lose them.
- Remove the four screws on the back of the laptop holding the screen in place with a #1 screwdriver. There are two on each side.

## Step 11



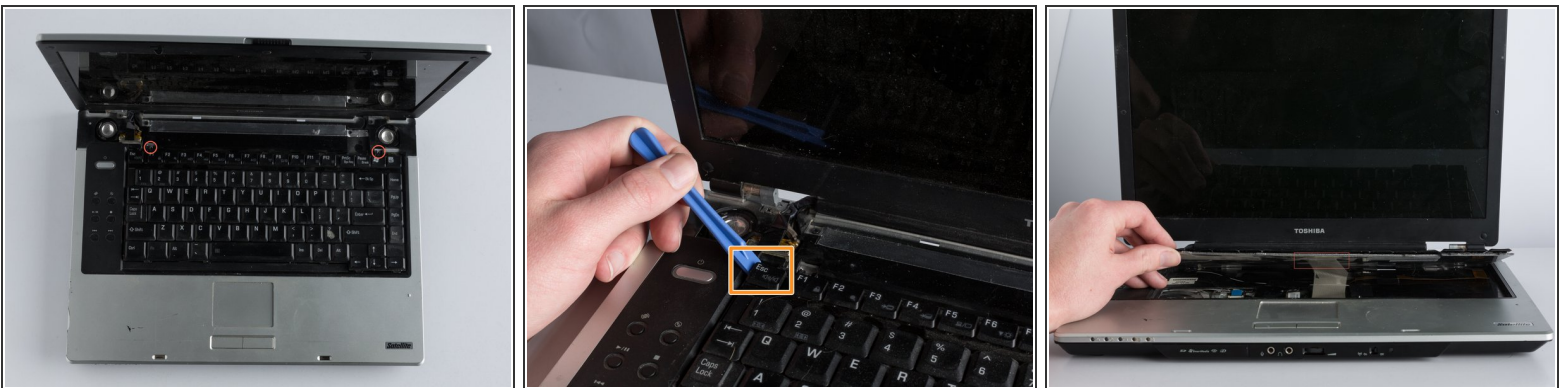
- Remove the display's video connector by gently pulling up.
- Remove the black-and-white antenna cable from the groove.
- Your display can now be removed.

## Step 12 — Keyboard



- Carefully pry the panel above the keyboard from both sides of the laptop using the iFixit opening tool.
- Push back the screen until it is horizontal with the laptop.
- Gently remove the clips that connect the panel to the screen.

## Step 13

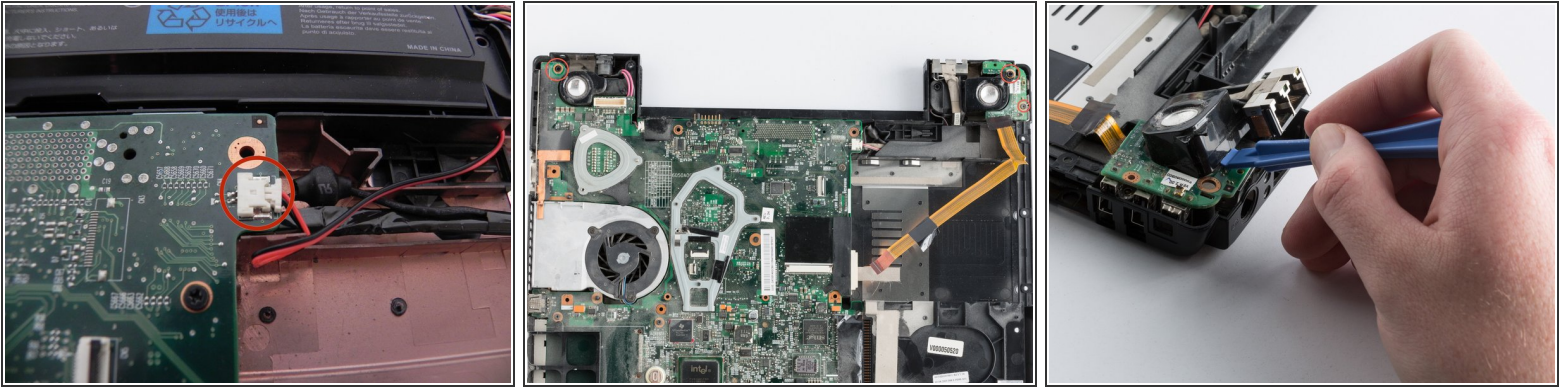


- Remove the two screws using a Phillips #1 screwdriver.
- Gently pry the keyboard from the laptop using the iFixit opening tool.
- Slowly lift the keyboard away from the laptop until you are able to remove the ribbon that connects to the laptop.

⚠ Ensure you remove the keyboard slowly to avoid damaging the ribbon cable.

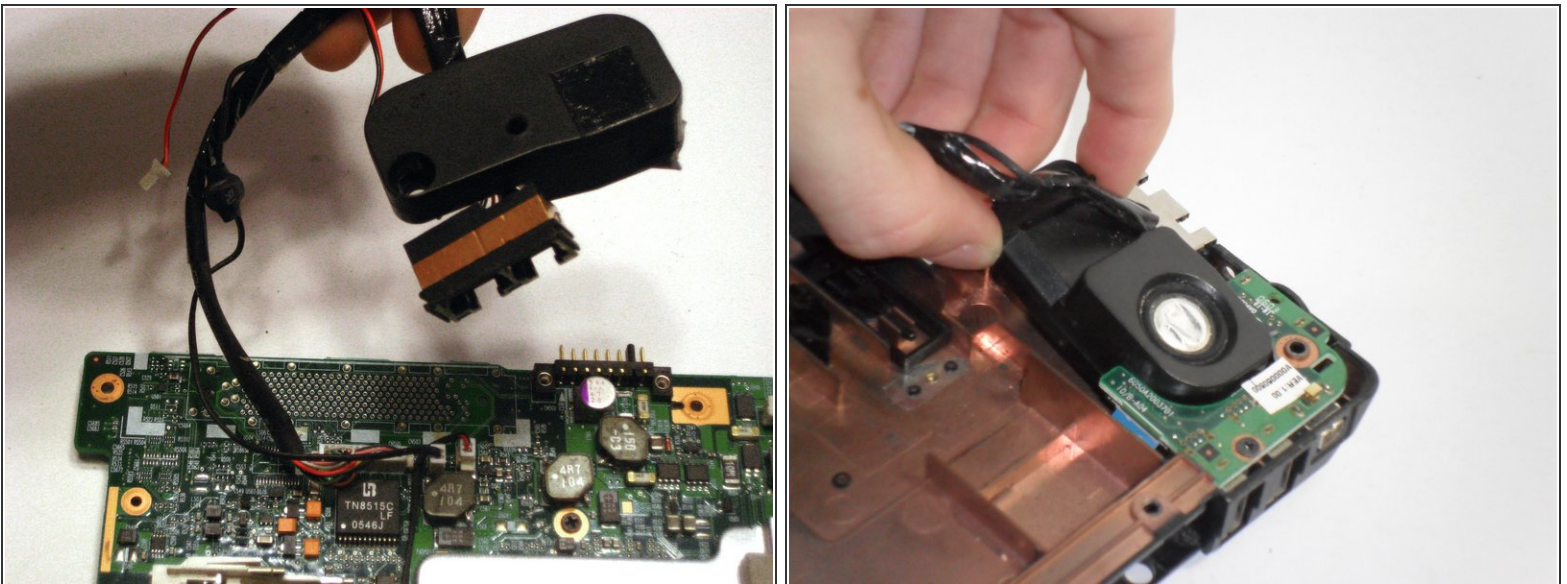


## Step 14 — Speakers



- Located near the upper edges of the motherboard you will find the 2-speaker wires that trace to the speakers. You will see these white tab with black and red wires.
- Unscrew the 2-screws located above the speakers to remove them. Slowly pull up on the speakers as there are other port connectors are located near the wiring.

## Step 15



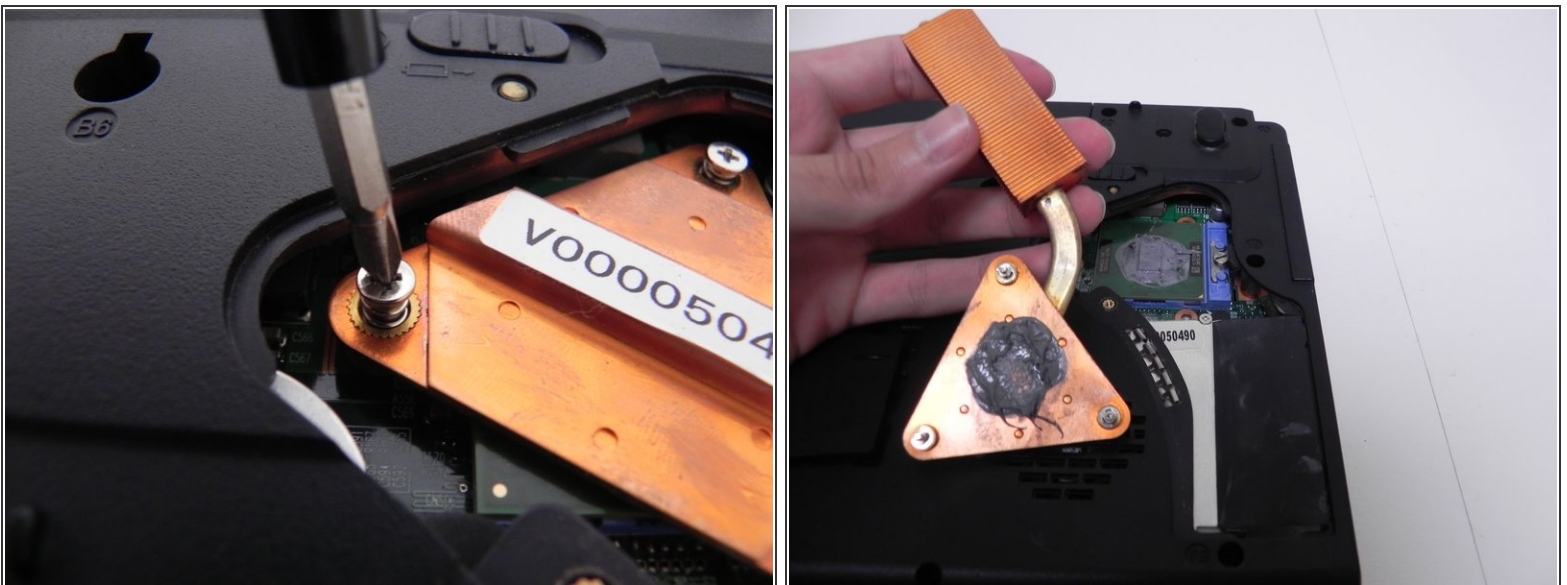
- To remove the left speaker follow the motherboard repair guide to complete this step to keep this guide concise.
- Reverse the order after installing the new speakers.

## Step 16 — Cooling Unit



- Remove the cover from the cooling unit.

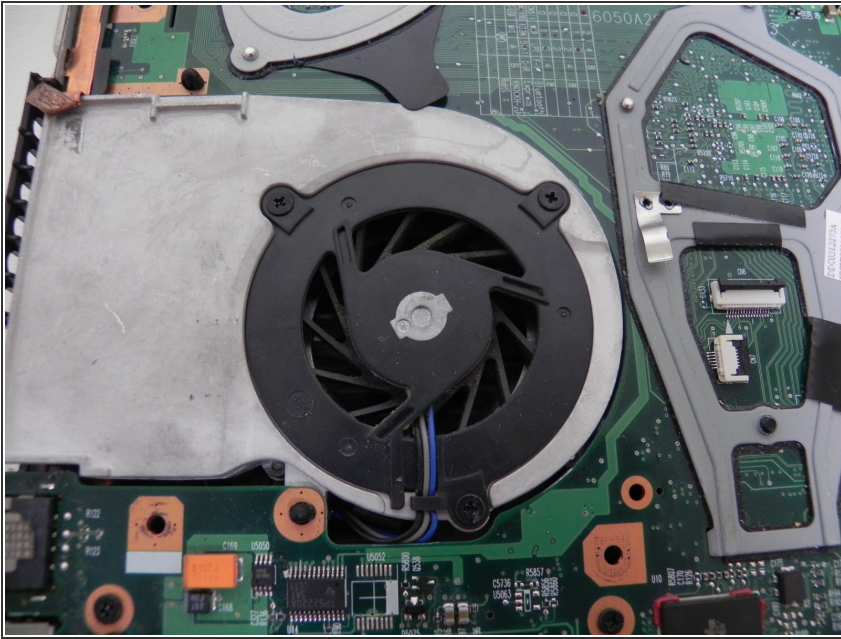
## Step 17



- Unscrew the copper heat-sink using a #1 screwdriver, and then lift it free. Do not get any thermal grease on any components. This part can now be replaced.

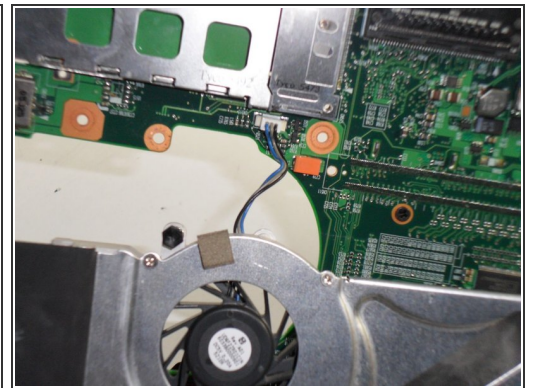
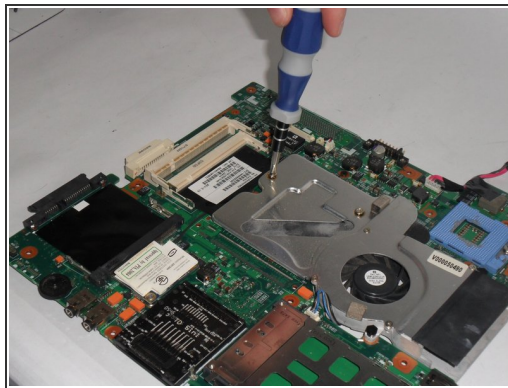
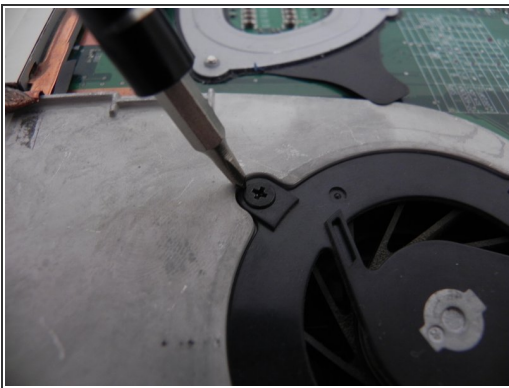


## Step 18



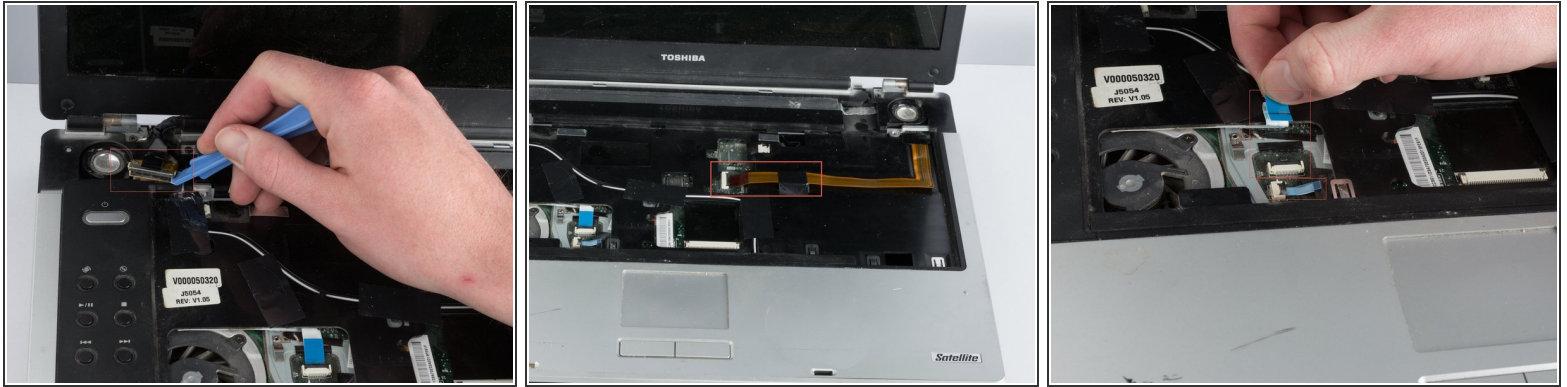
- Follow the tear-down guide until you have access to the fan unit on the motherboard.

## Step 19



- Unscrew the fan unit from the motherboard using a #0 screwdriver. Once the fan is unscrewed and unplugged from the motherboard, it can be replaced.

## Step 20 — Motherboard



- Disconnect the video cable near the left speaker slowly but firmly pulling upwards.
- Disconnect the brown ribbon that is located directly in the middle of where the keyboard one was away from the connector.
- Disconnect the 2-other white ribbons located near the top right half of the keyboard section pulling firmly away from the connector.

## Step 21

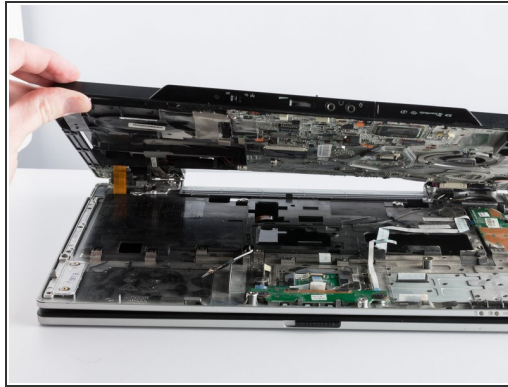


- Unscrew all the screws labeled using a micro-screwdriver turning counterclockwise.
- There are 3-additional screws that need to be removed through the 3-holes located in the optical drive.

This document was generated on 2019-09-18 02:53:18 PM (MST).

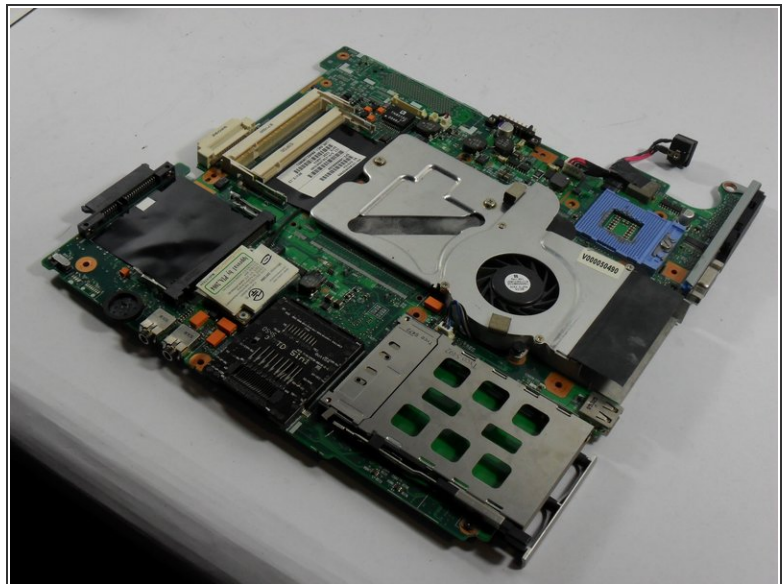


## Step 22



- Using a flat-edge tool begin to pry away the case apart and slowly pulling upward as there is a white ribbon that need to be removed.
- Make sure to completely untape the largest white ribbon, and let it slide through the top half of the case as you lift it.

## Step 23



- Now lift out the motherboard. Be careful not to rip any of the pieces out, just wiggle them out.

## Step 24 — Toshiba Satellite M45 Teardown



- Congratulations, your computer has been completely dismantled!
- Now, reverse the steps to reassemble.

To reassemble your device, follow these instructions in reverse order.