



Toshiba Satellite M55-S135 Keyboard Replacement

This guide will demonstrate how to replace the keyboard of a Toshiba Satellite M55-S135

Written By: klismann Evora



INTRODUCTION

The purpose of this guide is to demonstrate the process of removing a Toshiba Satellite M55-S135 laptop keyboard. For this process you'll need a flat-head screwdriver and a Phillips #00 screwdriver.



TOOLS:

- [Spudger](#) (1)
 - [Phillips #00 Screwdriver](#) (1)
-

Step 1 — Keyboard



- Start with the laptop open and the keyboard facing you.

⚠ Tilt the screen away from you to reduce the risk of damaging it as you remove the keyboard.

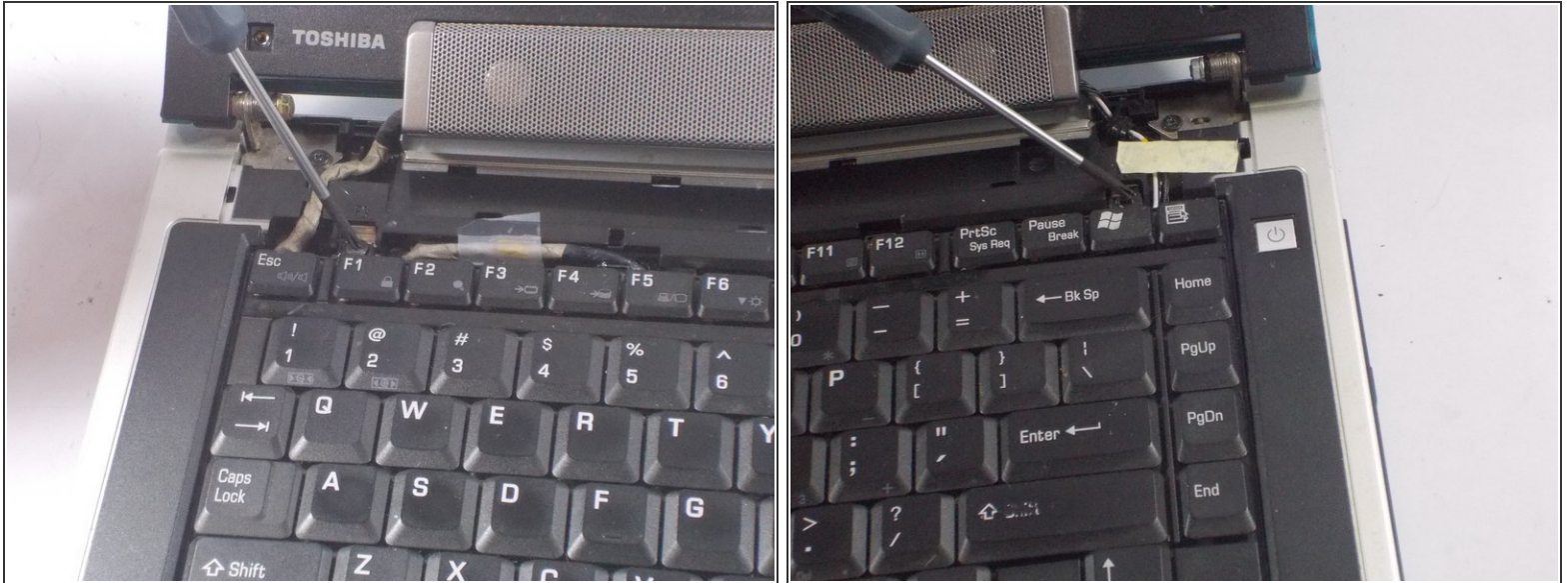
Step 2



- Locate the vertical seam between the speakers and the top row of keys on the keyboard.
- Insert the tip of a nylon spudger into the seam and slowly pry up the panel.

⚠ Be sure to gently pry the panel to avoid damaging it or the laptop.

Step 3



- Remove both 6.72mm screws from the upper left and right of the keyboard using the Phillips #00 screwdriver.

Step 4



- Use the nylon spudger to pry up the keyboard. Start with one side and then the other.
- ⚠ Be sure to pry gently with the screwdriver to avoid damaging the keyboard and keys.

Step 5



- Gently lift the keyboard to reveal the keyboard cable located near the mouse pad.
 - Disconnect the keyboard cable.
- ⚠ Be sure to disconnect the cable before removing the keyboard to avoid damaging it.

To reassemble your device, follow these instructions in reverse order.