



Toshiba Satellite M55-S135 Optical Drive Replacement

Remove and replace the optical drive on your Toshiba Satellite.

Written By: Yuheng Huang



INTRODUCTION

This guide will illustrate how to replace the optical drive in your Toshiba Satellite.



TOOLS:

- [Phillips #00 Screwdriver](#) (1)
 - [iFixit Opening Tools](#) (1)
-

Step 1 — RAM



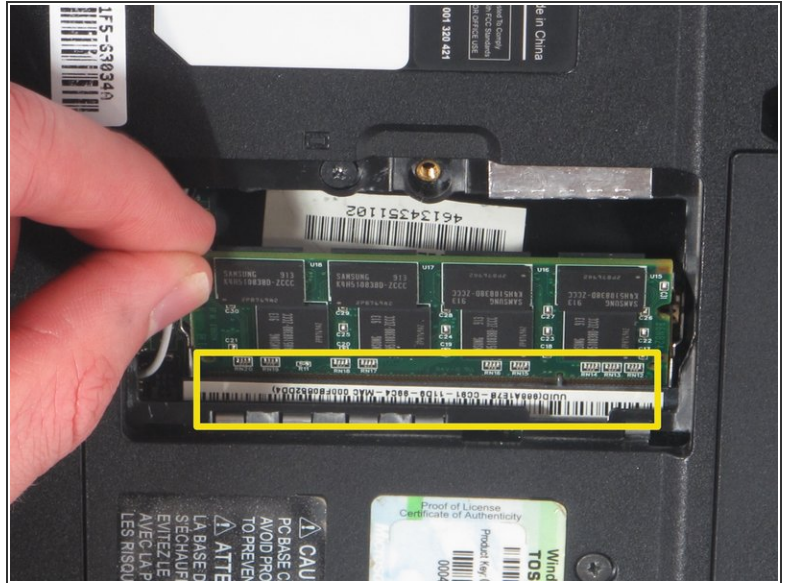
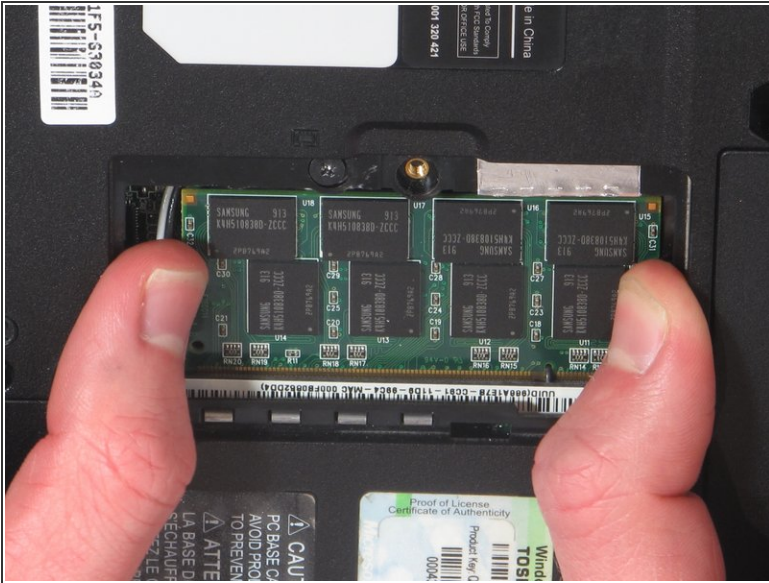
- Orient the laptop so that it is closed, faced down and has the battery facing away from you.
- Use the Phillips 00 screwdriver to remove the 7.50mm screw from the panel.

Step 2



- ⚠ Carefully remove the cover to reveal the RAM compartment.

Step 3



- Rotate the laptop 90 degrees clockwise.
- Pull back the two silver clips that hold the RAM in place.
- Gently pull the RAM out of the slot and lift up to remove the RAM from the laptop.

Step 4 — Optical Drive



- Use the Phillips #00 screwdriver to remove the 6.50mm screw holding the gray metal bracket in place.

Step 5



- ① Turn the laptop 180 degrees then tilt the near side up.
- Push the back side of the optical drive out of the laptop using the plastic opening tool.

Step 6



- Pull the optical drive out of the laptop using your fingers.

Step 7



- Using the Phillips 00 screwdriver, unscrew the two 2.50mm screws that connect the metal bracket to the optical drive.
- Remove the bracket from optical drive.

To reassemble your device, follow these instructions in reverse order.