



Toshiba Satellite M55-S135 Screen Replacement

Removing the screen from your Toshiba Satellite.

Written By: Matthew Trinh



INTRODUCTION

This guide will provide a walk-through on how to remove the screen in your Toshiba Satellite.



TOOLS:

- [Phillips #00 Screwdriver](#) (1)
 - [iFixit Opening Tools](#) (1)
 - [2.5 mm Flathead Screwdriver](#) (1)
-

Step 1 — Battery



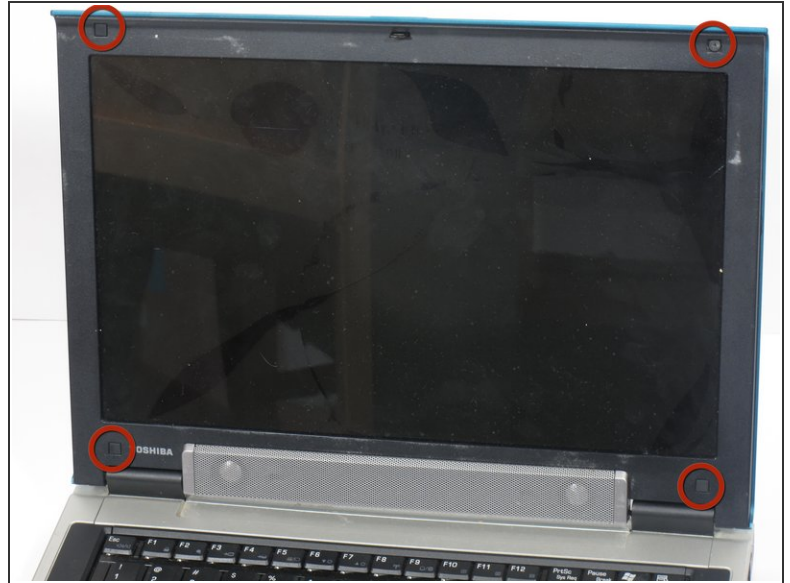
- Orient the laptop so that it is closed, faced down, and the battery is facing away from you.
- Slide the unlock switch in the top left-hand corner to the left/unlock position.

Step 2



- Hold the switch in upper right-hand corner to the right.
- With the switch held open, pull the battery straight away from the laptop.

Step 3 — Screen



- Use the plastic opening tool to remove the four small rubber pop-out squares from the corners of your screen.

i The laptop displayed in the picture does not have these plastic squares.

Step 4



- Use the Phillips 00 screwdriver to unscrew the four 6.72mm screws from the corners of the screen.
- ⓘ The screws will be located underneath the previously removed black squares.

Step 5



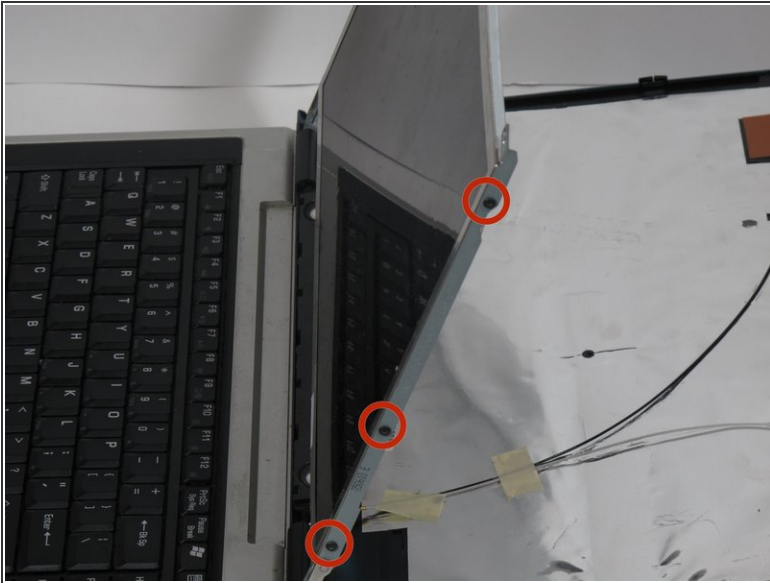
- Use the plastic opening tool to pop off the black plastic casing that surrounds the screen.

Step 6



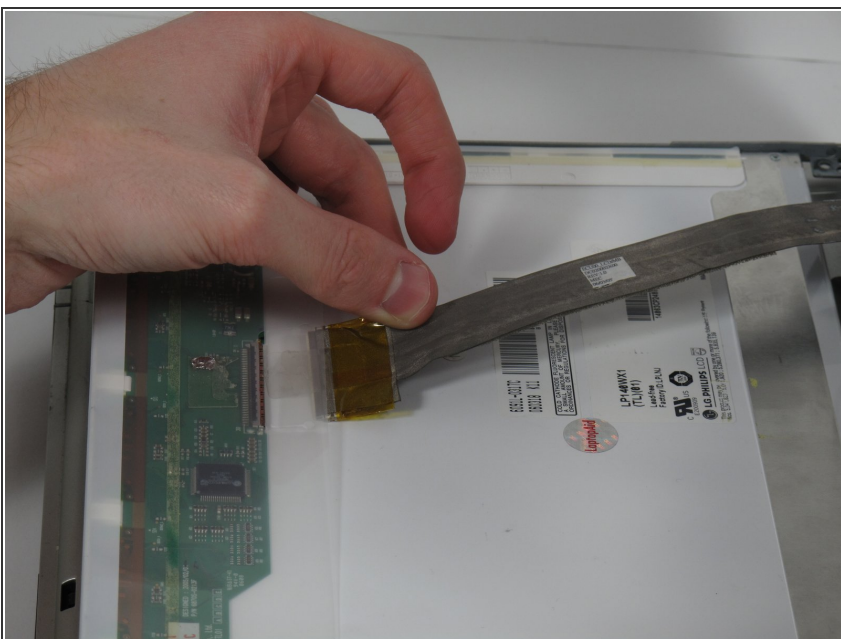
- Use the Phillips 00 screwdriver to remove the two 6.72mm screws at the bottom left and right of the screen.

Step 7



- Turn the laptop 90 degrees clockwise.
 - Use the Phillips 00 screwdriver to remove the six 3.78mm screws from both sides of the screen.
- ⚠ Hold on to the screen while removing the screws.

Step 8



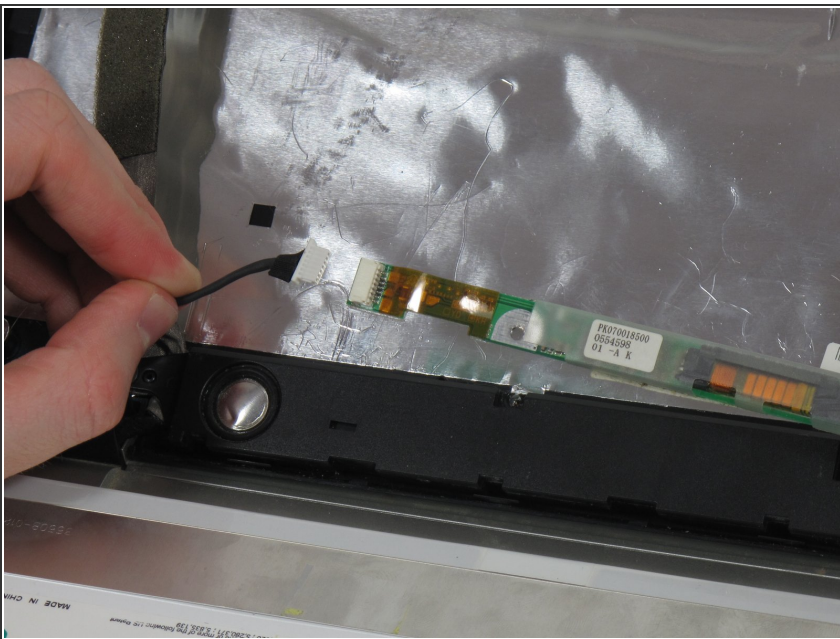
- Fold the screen down so that the back of the screen is visible.
- Remove the yellow wiring connected to the top of the back of the screen by pulling it out and then up.

Step 9



- Use the Phillips 00 screwdriver to remove the 5.54mm screw connecting the green panel to the laptop frame.

Step 10



- Pull out the green panel and disconnect the black cable from the belly of the green panel.
- ⓘ The screen should be fully disconnected from laptop at this point.

To reassemble your device, follow these instructions in reverse order.