



Toshiba Satellite P105-S6147 RAM Replacement

This is a guide to replace the RAM for a Toshiba Satellite P105-S6147. Consult the Toshiba Satellite P105-S6147 Device Page for further questions.

Written By: Benjamin Wilkinson



INTRODUCTION

This is a replacement guide for the Toshiba Satellite P105-S6147 RAM. This part is responsible for storing data for short-term use. Replace this part if your laptop programs are not running properly, or if your laptop is running slow. Refer to this [troubleshooting guide](#) before replacing the RAM.

All the tools you will need in this guide can be found in the iFixit Pro Toolkit. We suggest you perform this replacement on a large, level workspace where you can avoid knocking small parts onto the floor. Label any small parts so you know where to put them when reassembling the laptop.

Consult the Toshiba Satellite P105-S6147 [Device Page](#) for further questions.

Step 1 — RAM



- Begin with the laptop laying down on a flat surface, with the bottom facing up.

Step 2



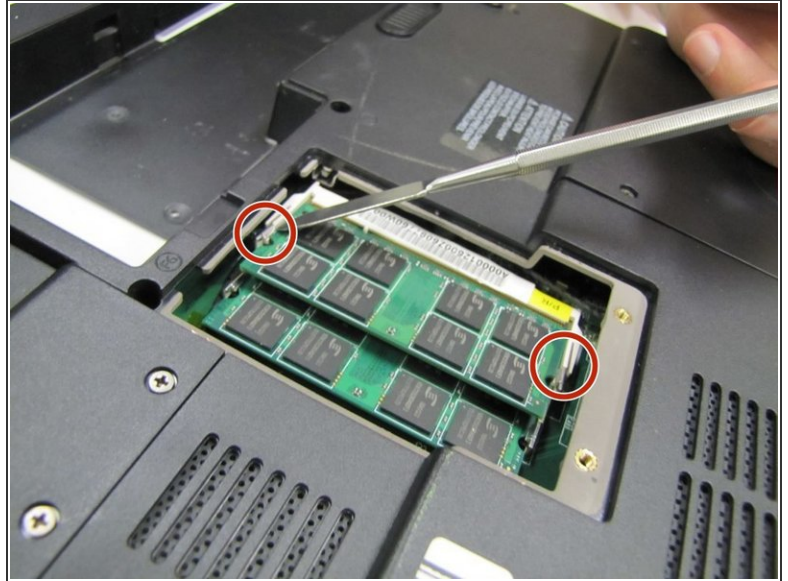
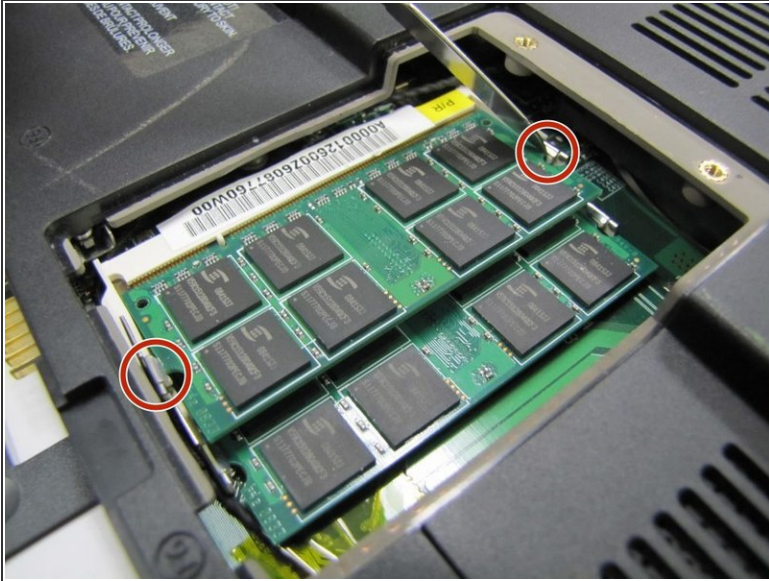
- Remove the battery from the device.
- ❗ The battery is located in the bottom, left hand corner of the device.
- Slide the lock switch to the unlocked position.
- Slide the release lever towards the unlock switch. The battery should now rotate out of its dock in the laptop.

Step 3



- Open the casing directly above the battery.
- Use a Phillips #0 screwdriver to remove two 4 mm screws located at the top of the casing.
- Once the cover is removed the RAM sticks will be visible.

Step 4



- Use a nylon spudger to disconnect the tabs from the RAM. The tabs are located on either side of the RAM.
- Apply light, outward force to the tabs.

Step 5



- Use the iFixit opening tool to apply light pressure to the bottom of the upper RAM stick.
- The RAM stick should come loose and be removable by hand.
- Repeat the previous steps to remove the lower RAM stick.

To reassemble your device, follow these instructions in reverse order.