



Toshiba Satellite P205-S8811 Monitor Replacement

This guide will demonstrate how to replace the monitor.

Written By: Bradley Johnson



INTRODUCTION

If your monitor is malfunctioning and/or needs to be replaced, follow the steps in this guide.



TOOLS:

- [iFixit Opening Tools](#) (1)
 - [Phillips #1 Screwdriver](#) (1)
-

Step 1 — Battery



- Flip the laptop over so the bottom is facing upward and the battery is on top.
- Slide the tab below the battery to the left.

Step 2



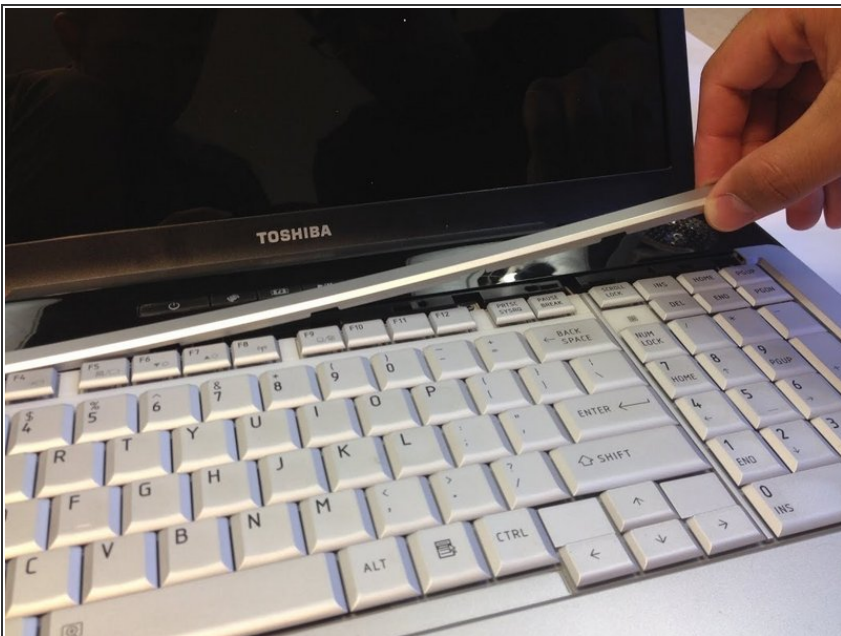
- Slide and hold the tab on the right side of the battery to the right.
- While holding the right tab, slide the battery upward and out its socket.

Step 3 — Keyboard



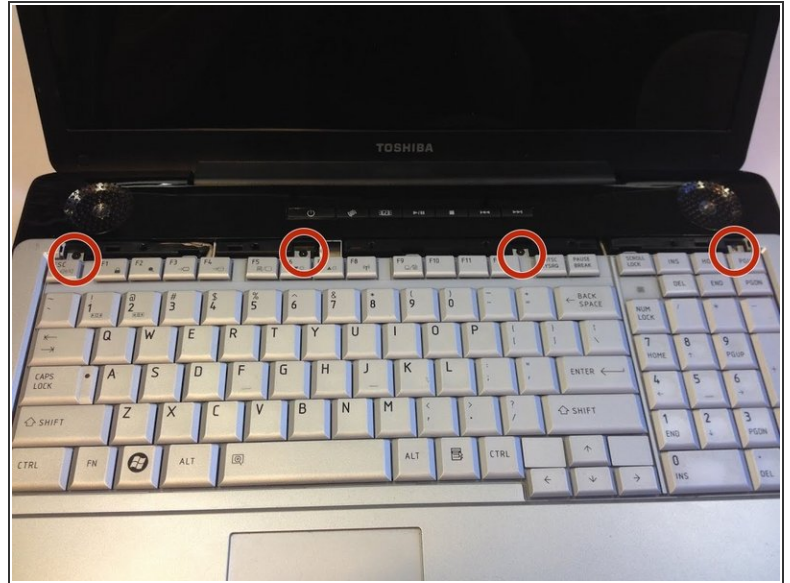
- Place the head of a plastic opening tool underneath the plastic strip lining the top of the keyboard, right above the "PGUP" button.
- Next, pull the strip up using a plastic opening tool with a light force, until it pops off.

Step 4



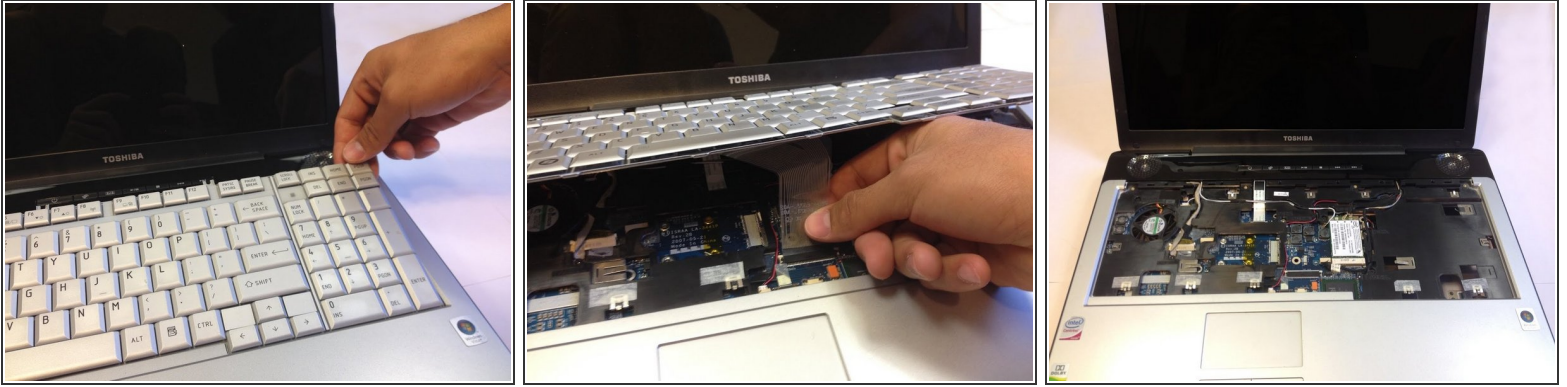
- Lightly lift from the side that was popped up earlier in order to pop the rest of the strip off of the laptop.


Step 5



- Use a #1 Phillips screwdriver to take out the four 4mm Phillips #1 screws that were underneath the plastic strip.

Step 6



 Be careful to not lift up on the keyboard too quickly or harshly; there is a ribbon cable connecting the keyboard and the base which may be breakable.

- Lightly lift up on the keyboard from one of its top corners and pull it towards the screen so you can safely remove the ribbon cable.
- At the base of the ribbon cable, there is a tiny tab that runs across the width of the connector. Flip it up. You can now pull the ribbon cable free with no resistance towards the monitor.
- With the cable unplugged, the keyboard can be lifted away from the laptop.

Step 7 — Monitor



- Unscrew the 4mm Phillips #1 screw holding the hard drive cover on.
- Place one finger underneath the tab of the hard drive cover and lift it up with medium force to take it off.

Step 8



- Grab the black tab attached to the hard drive and pull it to the left with a medium force until it pops out of its socket.

Step 9



- Remove the two 8mm Phillips #1 screws from the back side of the laptop.

Step 10



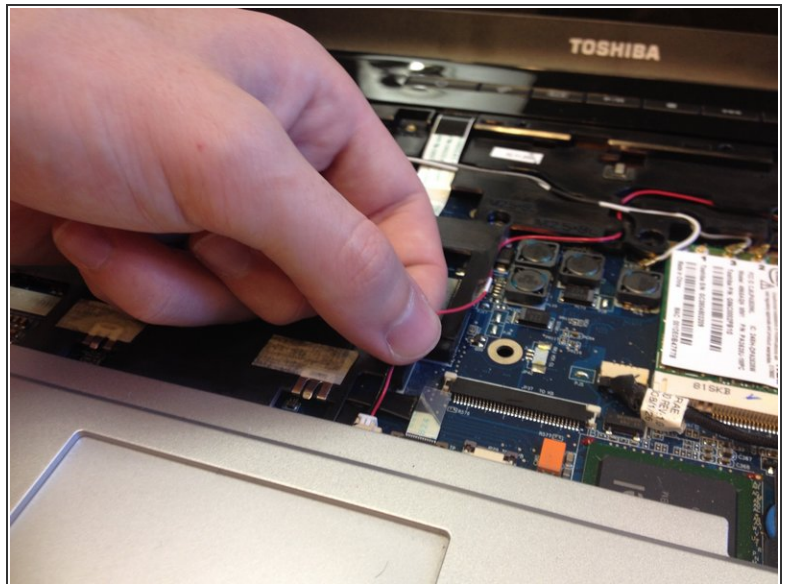
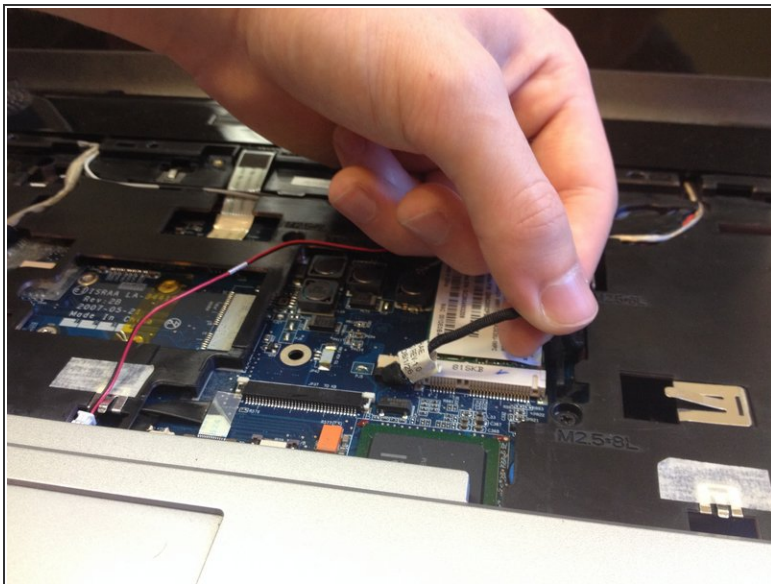
- Remove the four 8mm Phillips #1 screws located on the corners below the monitor.

Step 11



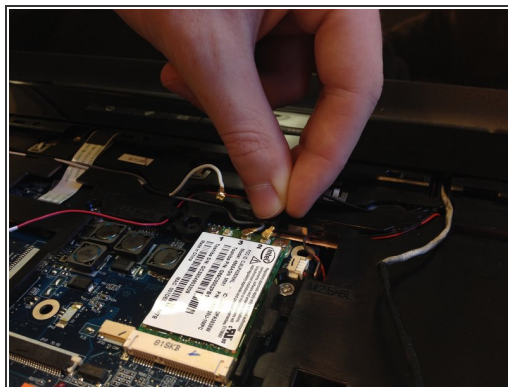
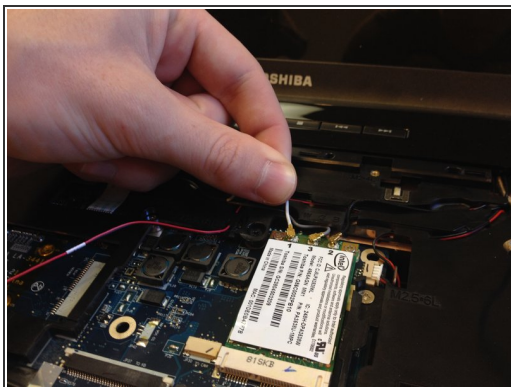
- Remove the two 4mm Phillips #1 screws located between the screws removed in the last step.

Step 12



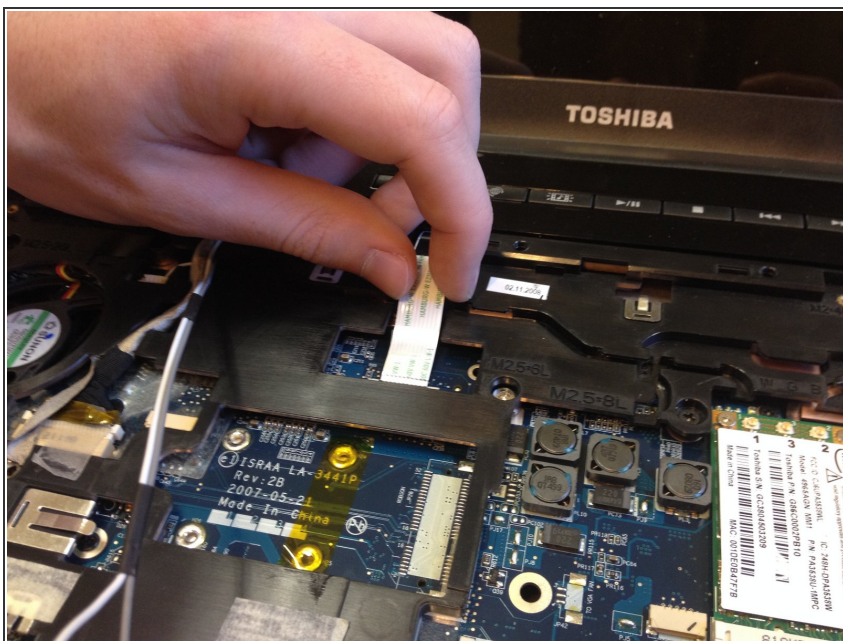
- Unplug the black wire connecting the monitor to the motherboard by pulling it lightly towards you.
- Unplug the black/red wire that also connects the monitor to the motherboard by pulling lightly away from you.

Step 13



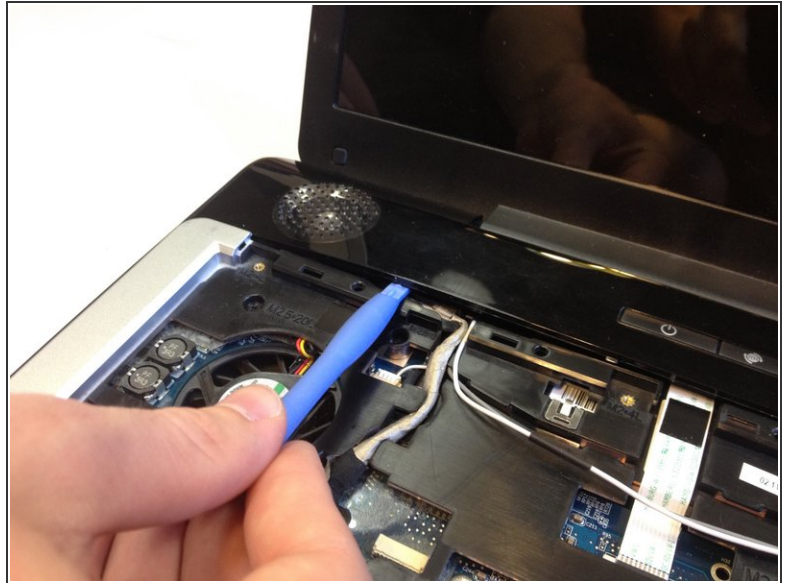
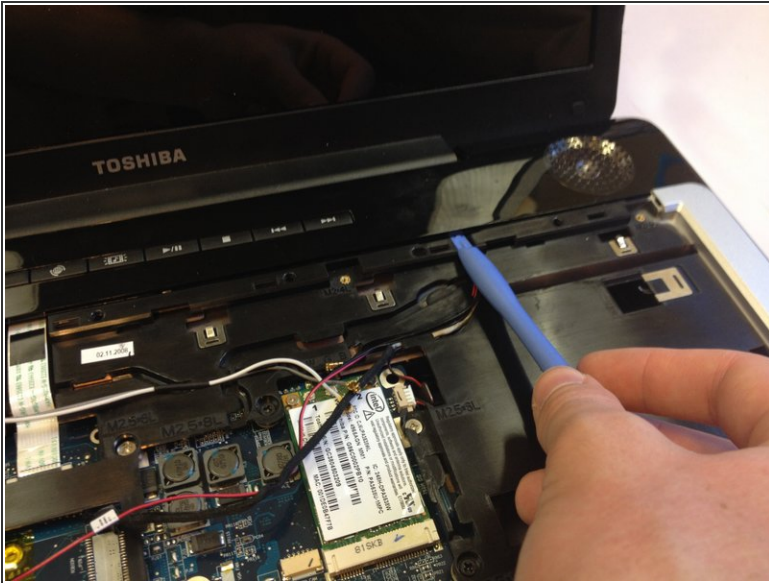
- Remove the three colored wires (white, grey, and black) that are all connected beside each other by pulling them up lightly.

Step 14



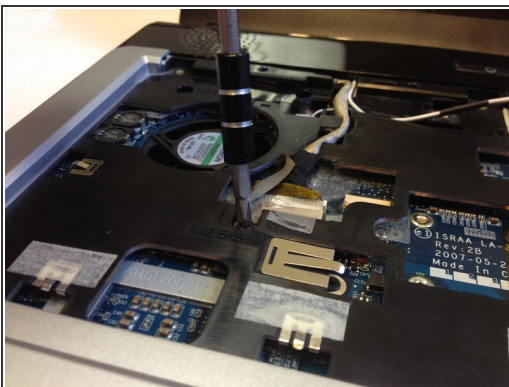
- Gently pull out the wide, white wire coming from the monitor.

Step 15



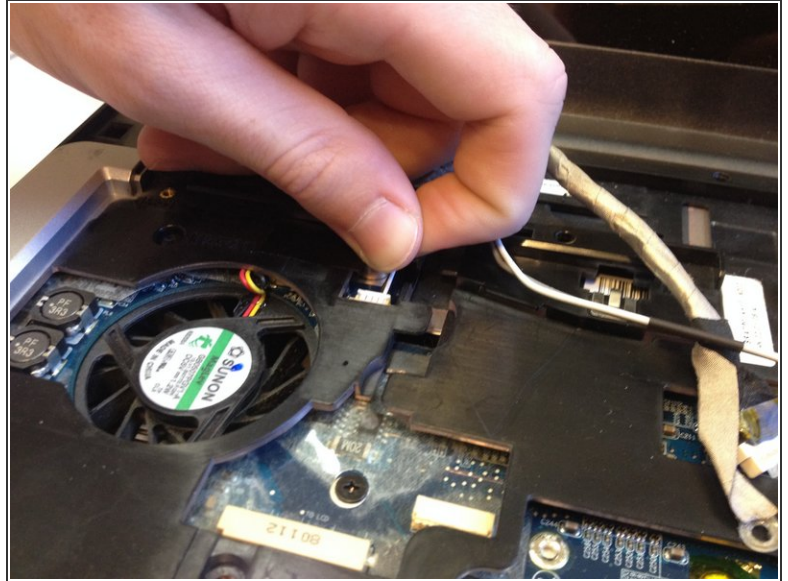
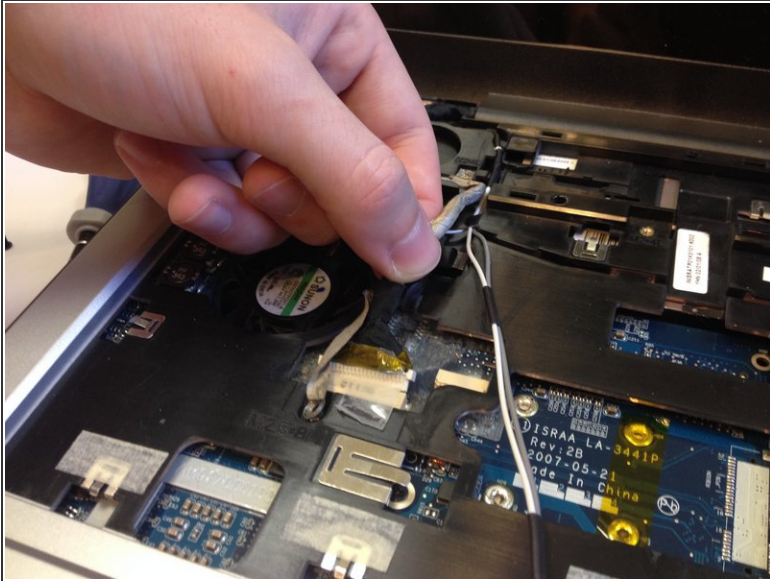
- Use a plastic opening tool to loosen the top panel by placing the tool underneath the panel at several points and then lifting upwards with a medium force. You will know it is loose if it makes a loud clicking noise.
- Place your fingers on the side of the panel closest to the monitor. Lift up on that side of the panel with a large amount of force in order to pry it off.

Step 16



- Remove the 8mm Phillips #1 screw located just below the large gray wire.
- Remove the 8mm Phillips #1 screw located to the right of the left-hand speaker.
- Remove the 4mm Phillips #1 screw located above the fan and next to the large gray wire.

Step 17



- Remove the large gray wire that is connected to the motherboard to the right of the fan.
- Remove the small white/grey wire that is connected at the top of the fan.

Step 18



- Grabbing both sides of the monitor, gently lift the it out of place and set it aside.

To reassemble your device, follow these instructions in reverse order.