



Toshiba Satellite P205D-S8804 Battery Replacement

This guide will show how to safely remove the battery from the laptop.

Written By: Tommy Wiffler



INTRODUCTION

This guide will show how to safely remove the battery from the laptop.

Step 1 — Battery



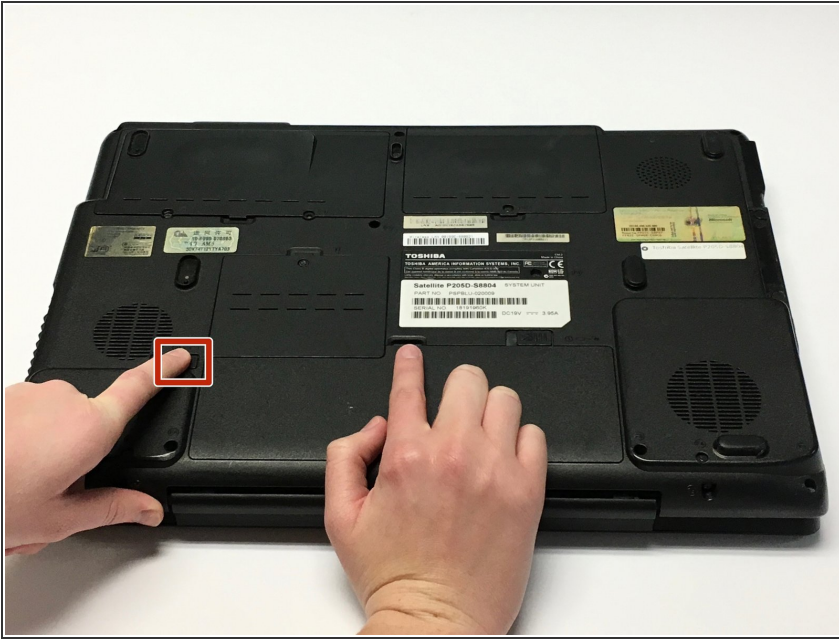
- Place the laptop upside down on a flat surface with the screen closed.

Step 2



- Slide the battery lock (marked with a 1), located at the top of the battery compartment, to the right.

Step 3



- Slide the far left latch (marked with a 2) to the left and hold while lifting the battery upward.

Step 4



- Lift the battery to completely remove it from the laptop.

To reassemble your device, follow these instructions in reverse order.