



Toshiba Satellite P205D-S8804 CD Drive Replacement

This guide will allow you to remove and replace the CD drive within the laptop.

Written By: Caroline Camp



INTRODUCTION

For this replacement you will have to remove the keyboard to get to the CD drive. Steps to remove the keyboard can be found in prerequisite guide at the top of the page. After the keyboard is removed then you are able to move on to the CD drive.



TOOLS:

- [iFixit screwdriver with a PH0 bit](#) (1)
 - [iFixit Opening Tools](#) (1)
-

Step 1 — Keyboard



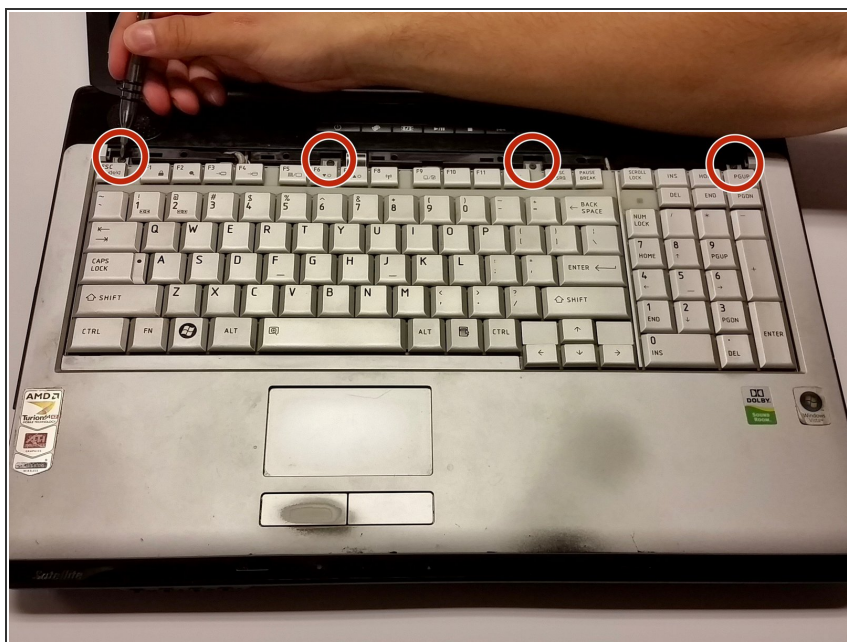
- Place the laptop with the screen facing you and grab the opening tool.
- Insert it into the top corner of the keyboard and slide it to the right along the length of the keyboard.
- *You will feel the popping sensation as it slides along.*

Step 2



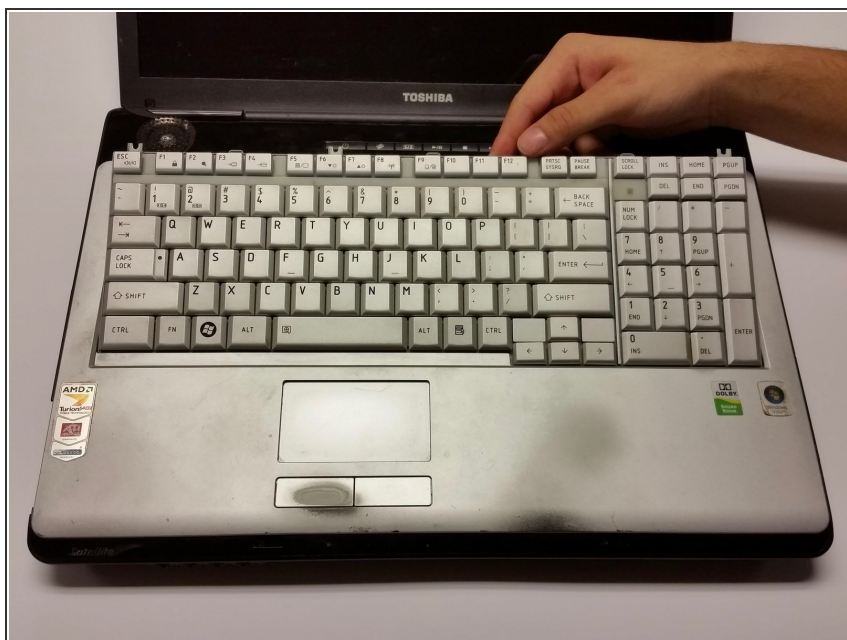
- Lit up the left side of the small plastic bar at the top of the keyboard.
- i** *Be careful when removing it, because you will need to apply a bit of force .*

Step 3



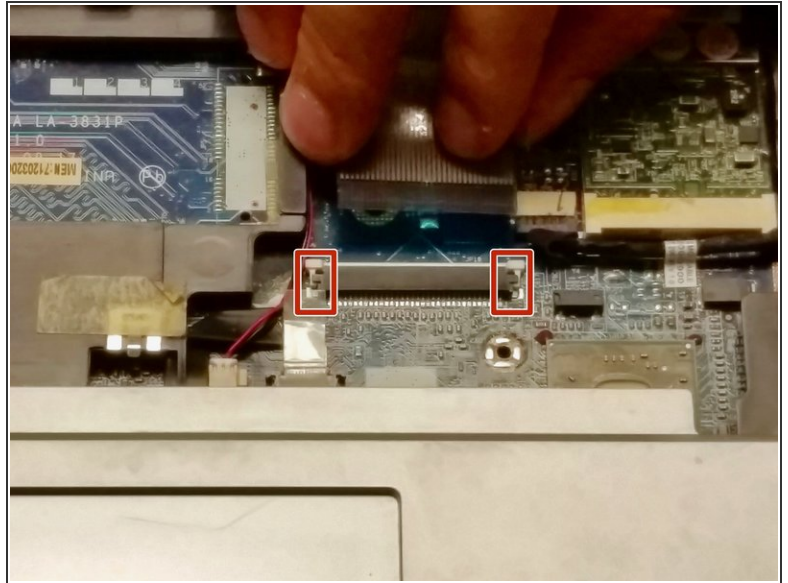
- Use a PH0 screwdriver to unscrew the 4 screws at the top of the keyboard.

Step 4



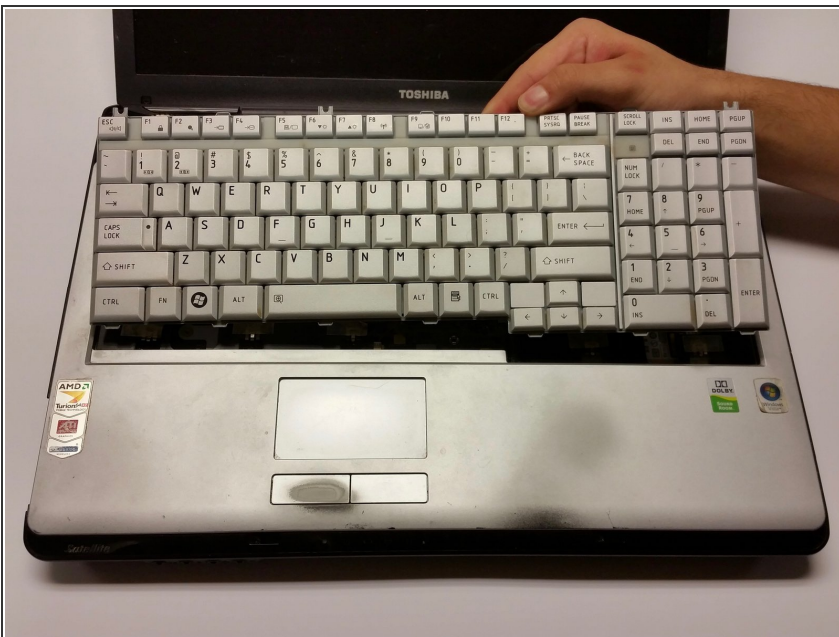
- Lift up the keyboard and pull it toward the screen.
- ⚠ *The keyboard will still be connected to the motherboard by a ribbon cable.*

Step 5



- To remove the ribbon cable, push upward on the small tabs located on either side of the ribbon.

Step 6



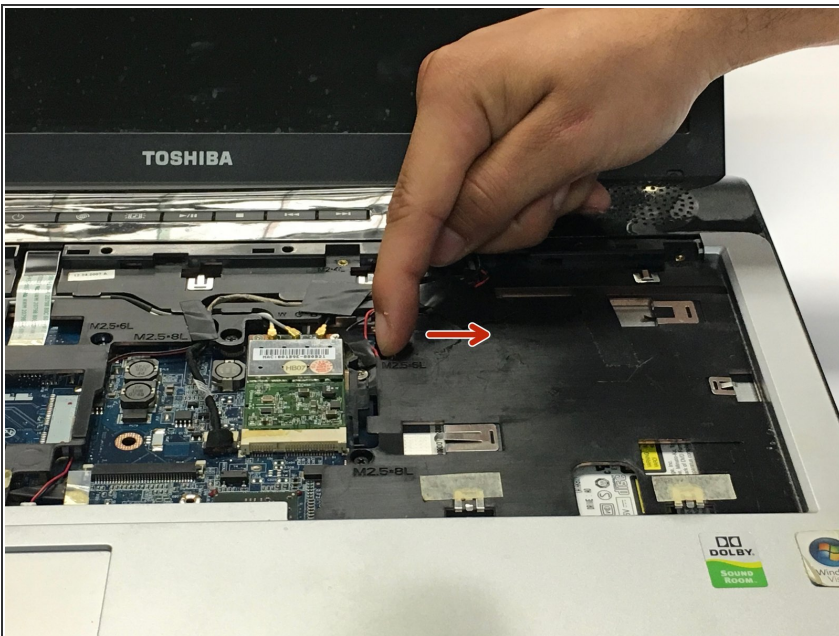
- Once the ribbon is released the keyboard can be removed .

Step 7 — CD Drive



- Flip the computer over with the hinge facing you.
- Remove one screw that is located in the Toshiba label on the bottom of the computer.

Step 8



- Flip the computer back over and push the metal tab to the right to release the CD drive from its docking port.

Step 9



- Remove the CD Drive.

To reassemble your device, follow these instructions in reverse order.