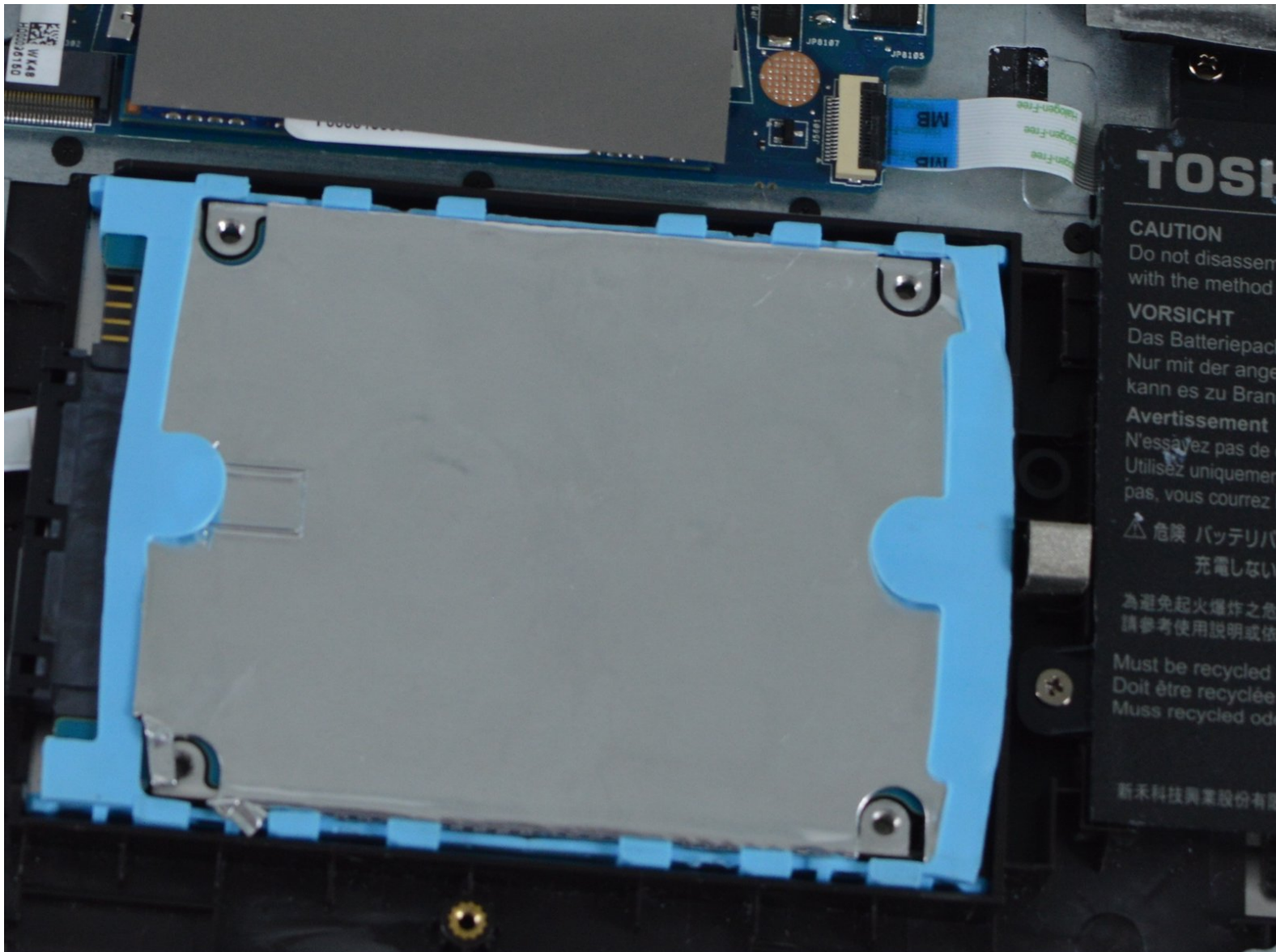




Toshiba Satellite P50W-C Hard Drive Replacement

This guide will explain how to access device's hard drive for it to be replaced.

Written By: Sarah Fordjour



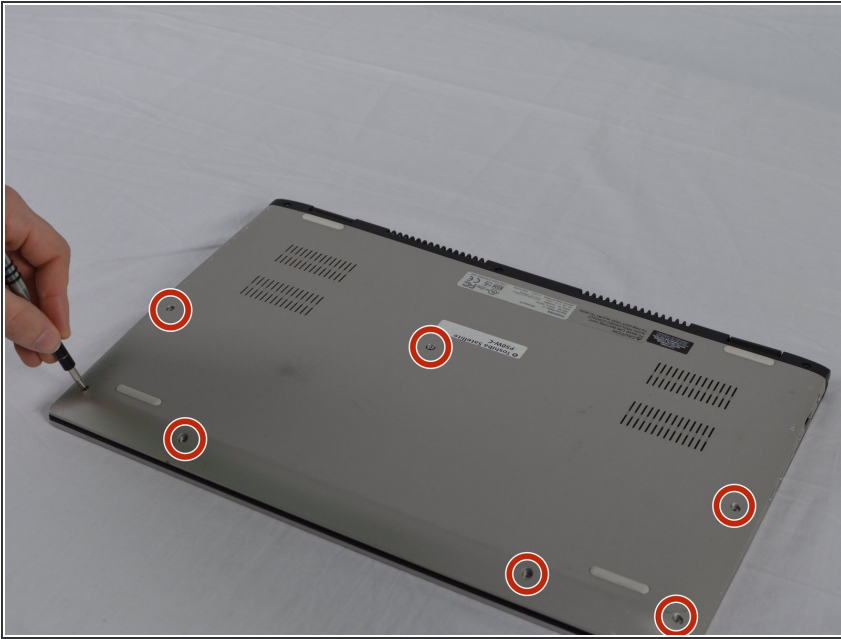
INTRODUCTION

Be careful to handle this device with care while performing this guide make sure to use use an anti-static wrist strap.

TOOLS:

- [Heavy-Duty Spudger](#) (1)
 - [Tweezers](#) (1)
 - [JIS #1](#) (1)
-

Step 1 — Back Cover



- ⚠ Turn the laptop off, unplug the AC adapter, and any other auxiliary components.
- Turn over the laptop and proceed to take out the seven 5mm silver JIS #1 head screws. If some of the screws are difficult to take out use the tweezers to help.

Step 2



- Use the screwdriver to take out the three 5mm black JIS #1 head screws that are located on the hinge.

Step 3



- Use the spudger to pry under the back cover until it pops off.

Step 4 — Hard Drive



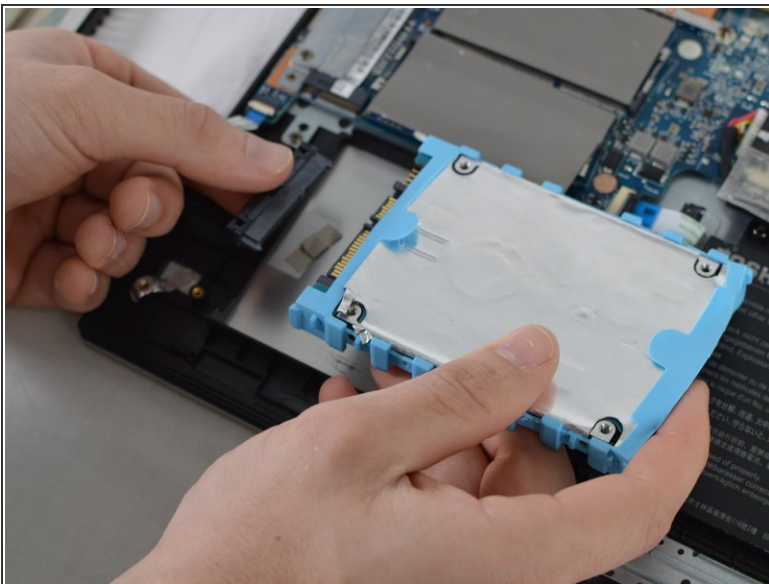
- Remove the back cover of the device.

Step 5



- Remove the hard drive from the device by gently pulling on the blue plastic hard drive cover.

Step 6



- Disconnect the hard drive from the motherboard by gently pulling out the black connector.

To reassemble your device, follow these instructions in reverse order.