



Toshiba Satellite P55-A5312 Wi-Fi/Bluetooth Card Replacement

This guide will illustrate how to replace the Wi-Fi or Bluetooth card in the laptop.

Written By: Aniketh Bhat



INTRODUCTION

Installing a new Wi-Fi card can improve your internet connection speed as well as maintain a reliable connection. First we will open the back of the laptop. After, we can easily unscrew and remove the Wi-Fi card.



PARTS:

- [Intel Wireless-AC 7260NGW](#) (1)
-

Step 1 — Wi-Fi/Bluetooth Card



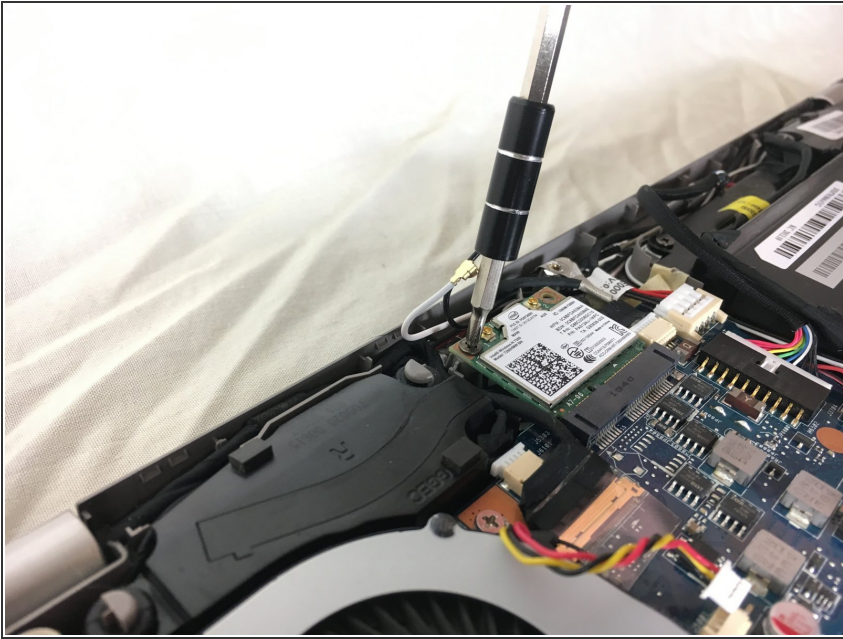
- Remove the back cover of your laptop. For instructions on how to do this, visit the [Toshiba Satellite P55-A5312 Back Cover Removal Guide](#)

Step 2



- Locate the Wi-Fi/Bluetooth card, and remove the two wires connected to the card with your hands.

Step 3



- Unscrew the single 2.5x6mm holding down the card onto the board with your Philips #0 screwdriver.

Step 4



- Remove/unhinge the card from the board by gently lifting it upwards.
- Replace it with your new card.

To reassemble your device, follow these instructions in reverse order.