



Toshiba Satellite P55W-C5200X Battery Replacement

Battery replacement guide for the Toshiba Satellite P55W-C5200X .

Written By: Kyra Macaroco



INTRODUCTION

If your Toshiba Satellite P55W-C5200X is only working when plugged into an outlet or is not detecting its battery, a look at the battery may be in order or even a replacement will be needed.

The tools needed to gain access to the battery are listed below . This is a low risk operation, the only requirement for safety is to make sure the device is turned off before starting and keeping away from liquids while working on the device. Also, be aware of [swollen batteries](#) as these can be dangerous.

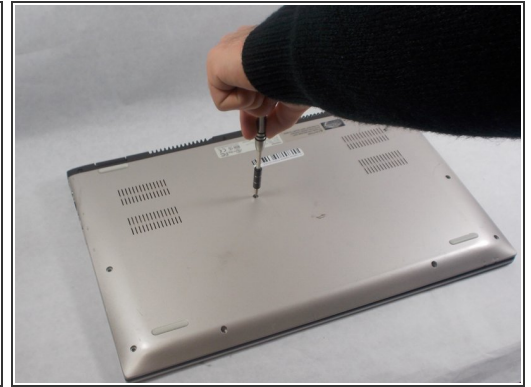
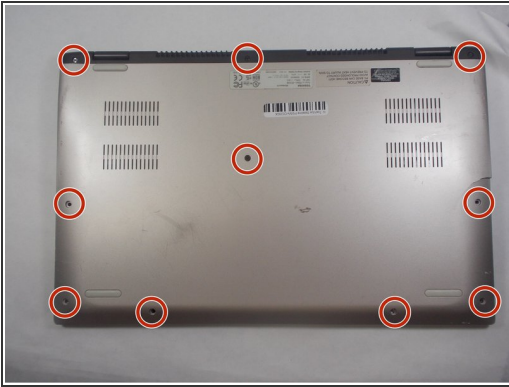
This guide will tell Toshiba Satellite P55W-C5200X users how to replace a defective battery.



TOOLS:

- [Spudger](#) (1)
 - [Phillips #00 Screwdriver](#) (1)
 - [JIS #000 Screwdriver](#) (1)
-

Step 1 — Battery



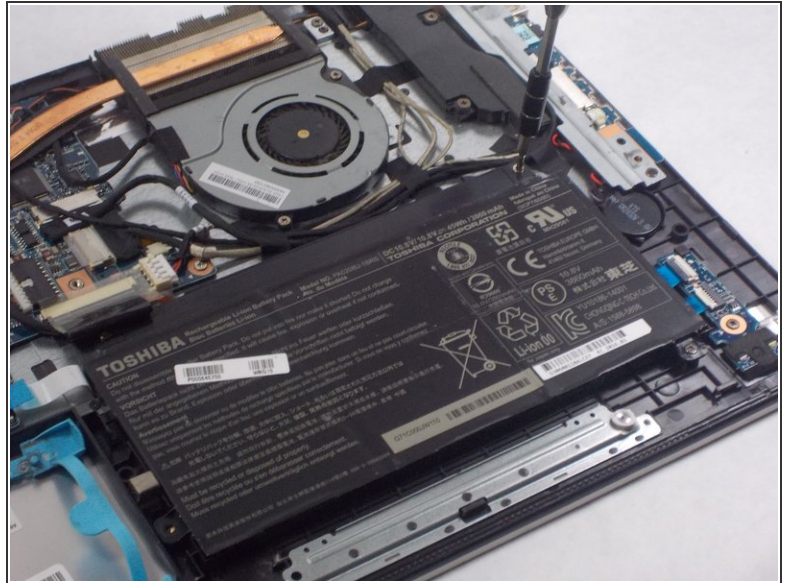
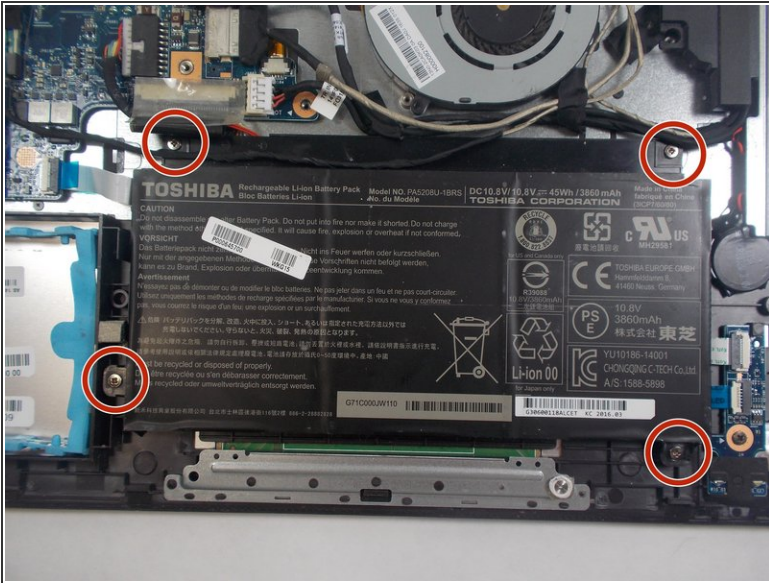
- Use the Phillips #00 screwdriver to remove the ten 4.0 mm screws located at the bottom of the laptop.

Step 2



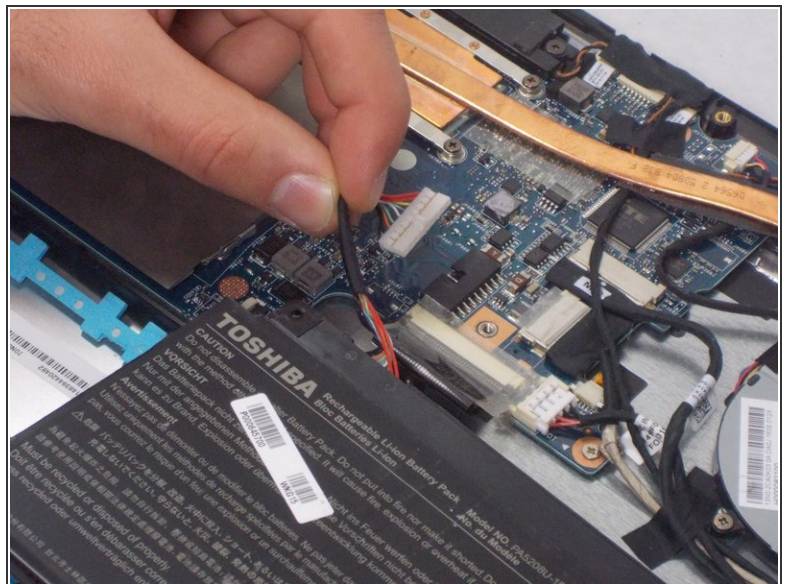
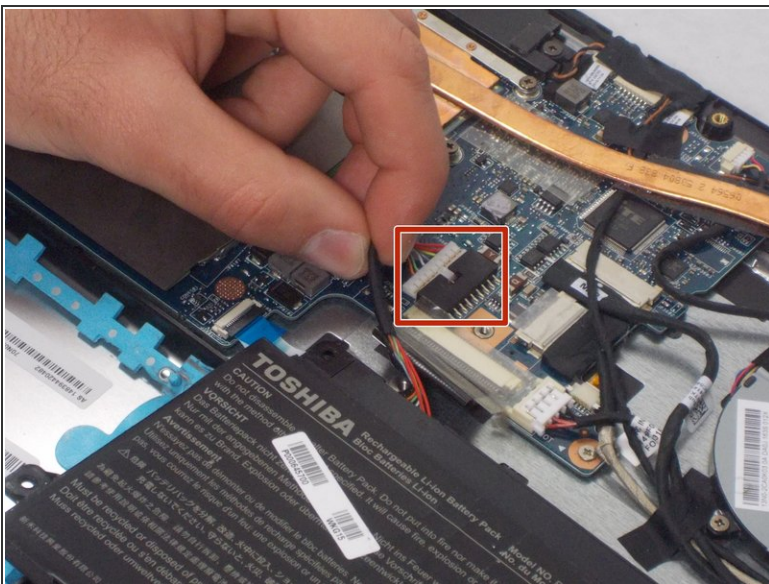
- Use the black nylon spudger to pry the back casing along the edges.
- Continue to pry along the edge of the back case until the back is ready to be removed.

Step 3



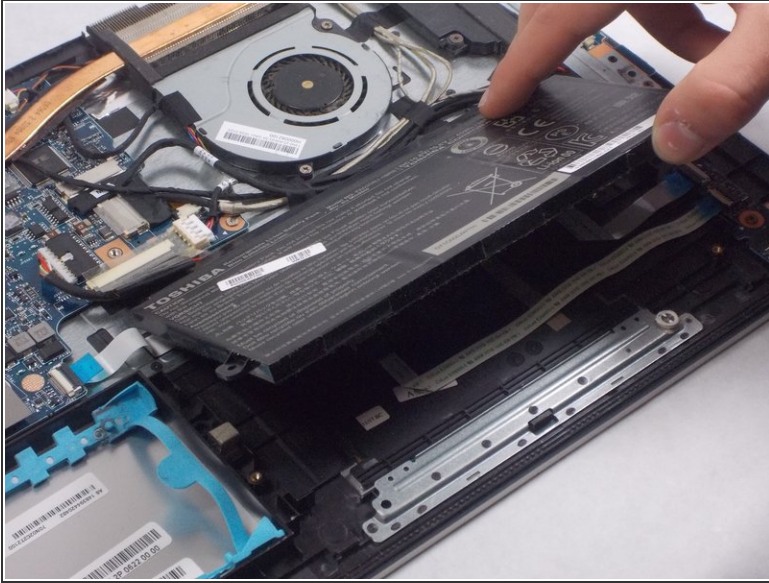
- Remove the four 6.0 mm screws that hold the battery in place using the JIS #000 screwdriver.

Step 4



- Disconnect the battery cable from the motherboard by carefully pulling on the black wire at the point closest to the white tab.

Step 5



- Gently remove the battery from your device.

To reassemble your device, follow these instructions in reverse order.