



Toshiba Satellite P55W-C5200X Display Replacement

Display replacement guide for the Toshiba Satellite P55W-C5200X .

Written By: Hadi Termos



INTRODUCTION

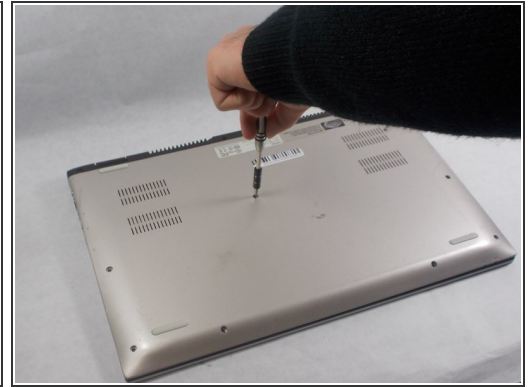
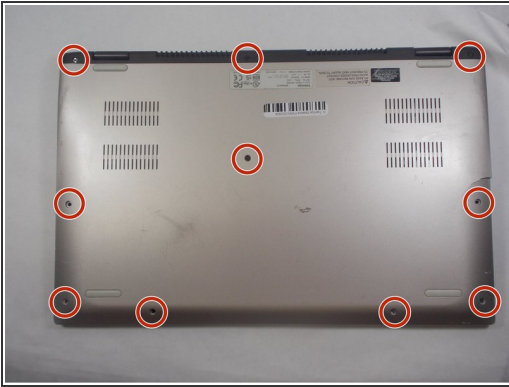
If your Toshiba Satellite P55W-C5200X is experiencing issues such as white spots and colored lines appearing, buzzing or random shutoffs, then it is clear your display is no longer functional. This may be due to the LED monitor, a faulty CFL monitor and/or power adapter. The best course of action is to replace the display assembly before problems become worse.



TOOLS:

- [Spudger](#) (1)
 - [Phillips #00 Screwdriver](#) (1)
 - [JIS #000 Screwdriver](#) (1)
-

Step 1 — Battery



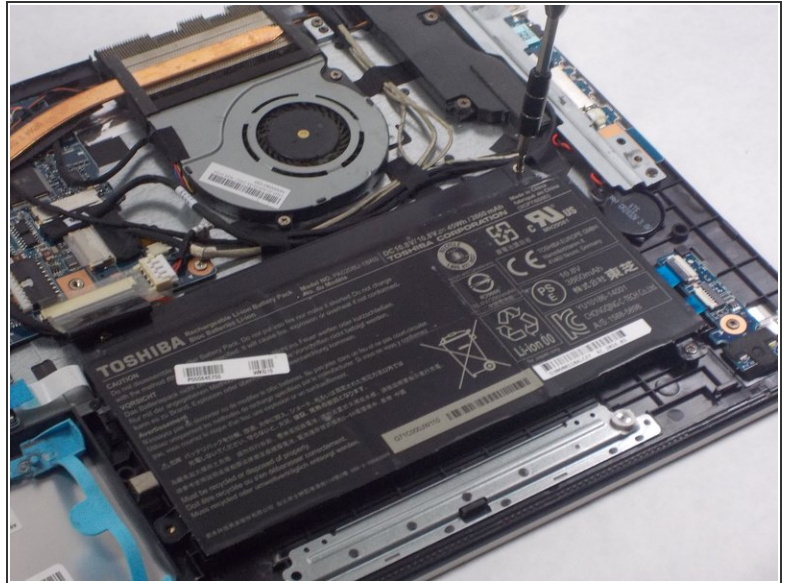
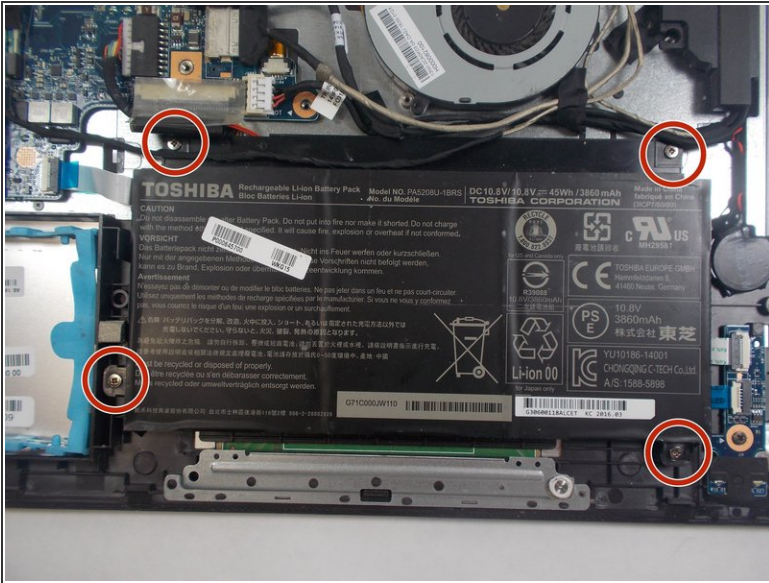
- Use the Phillips #00 screwdriver to remove the ten 4.0 mm screws located at the bottom of the laptop.

Step 2



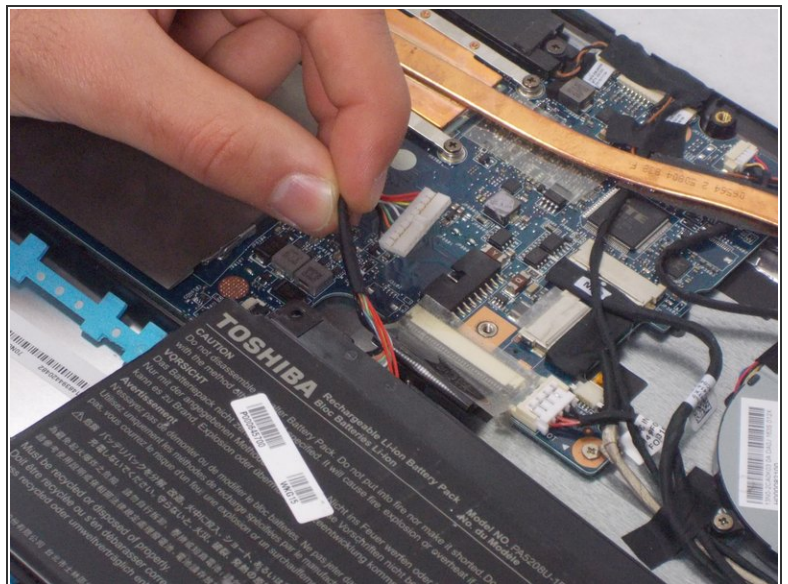
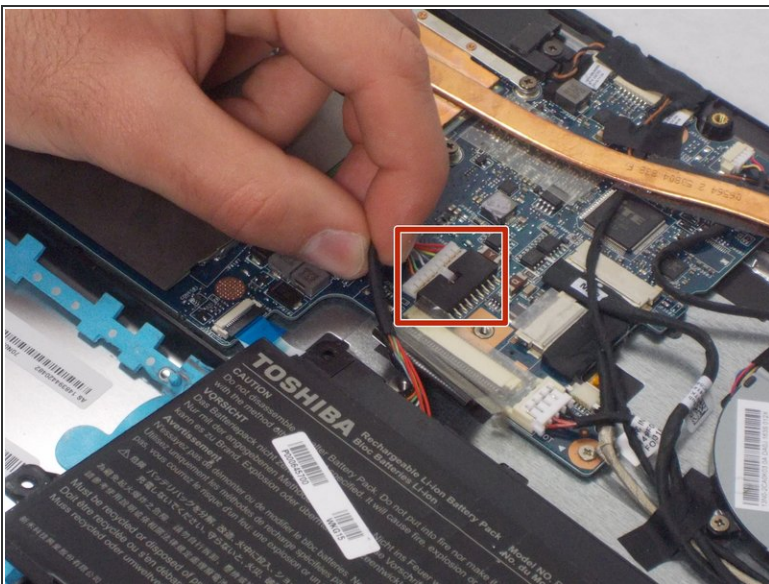
- Use the black nylon spudger to pry the back casing along the edges.
- Continue to pry along the edge of the back case until the back is ready to be removed.

Step 3



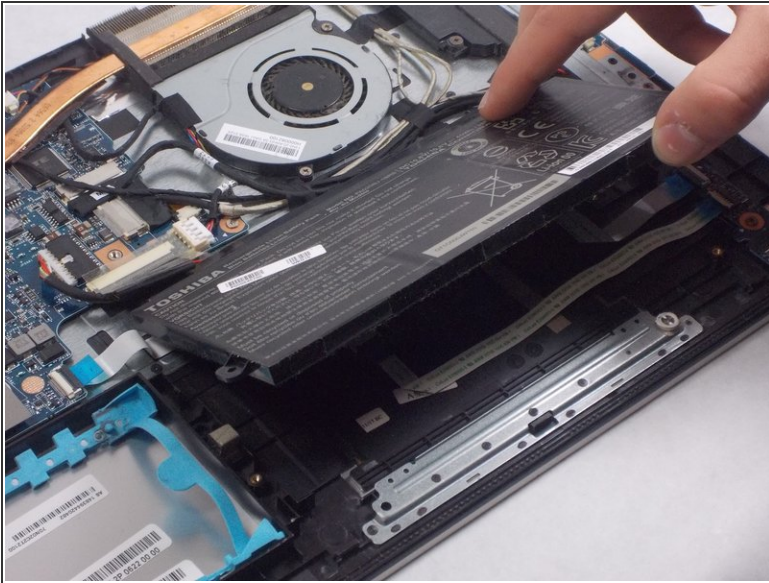
- Remove the four 6.0 mm screws that hold the battery in place using the JIS #000 screwdriver.

Step 4



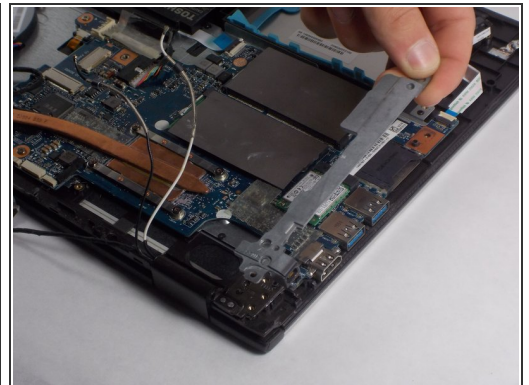
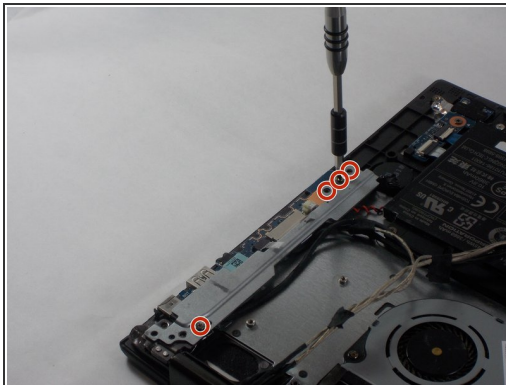
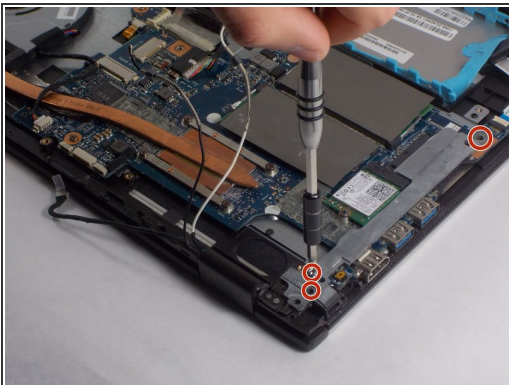
- Disconnect the battery cable from the motherboard by carefully pulling on the black wire at the point closest to the white tab.

Step 5



- Gently remove the battery from your device.

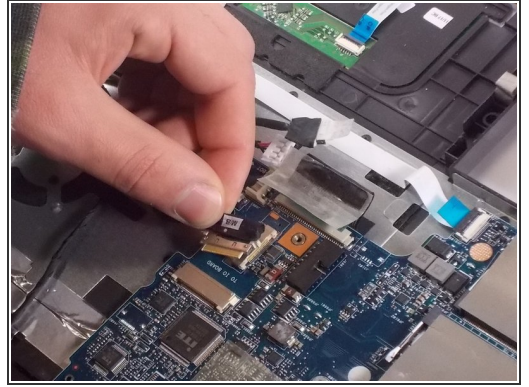
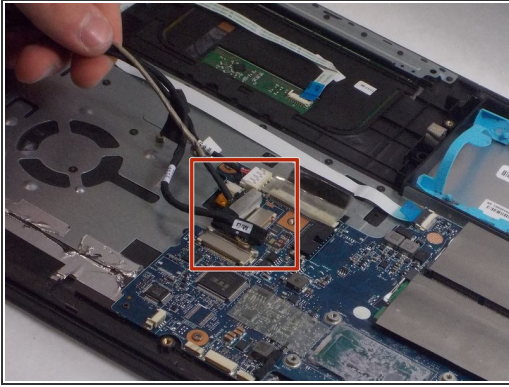
Step 6 — Display



- Use the Phillips #00 screwdriver to remove the six 5.0 mm screws that are holding the metal brackets on both sides in place.

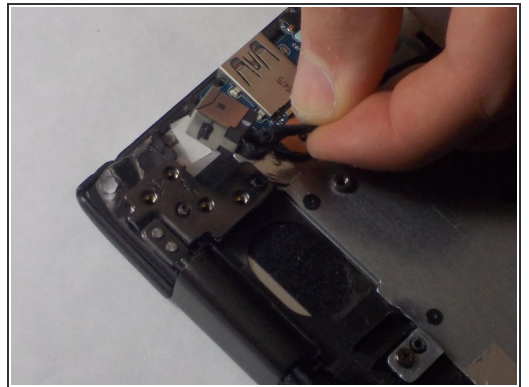
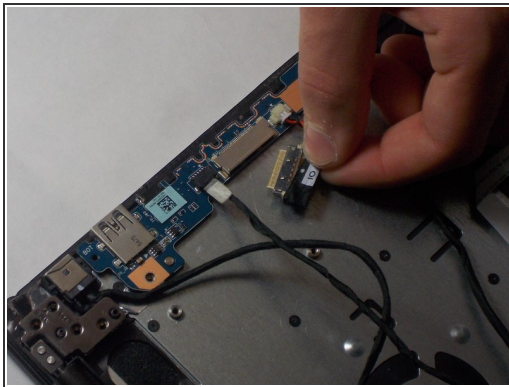
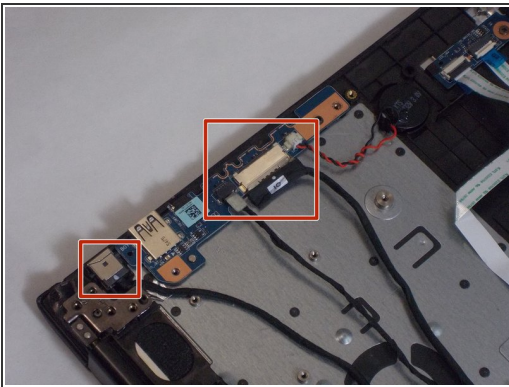
- ⓘ Gently remove both metal brackets.

Step 7



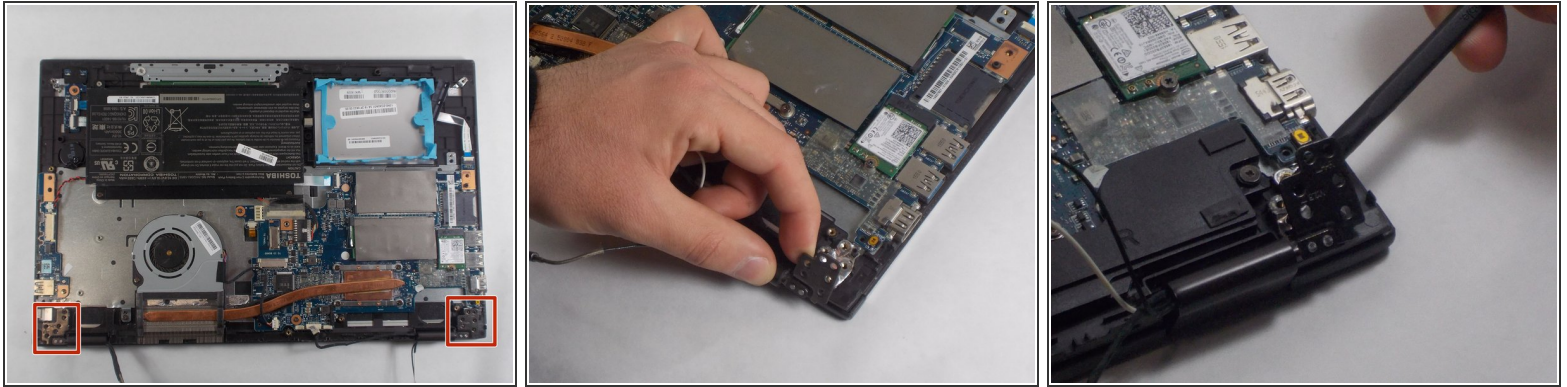
- Remove the three wires connected to the motherboard.

Step 8



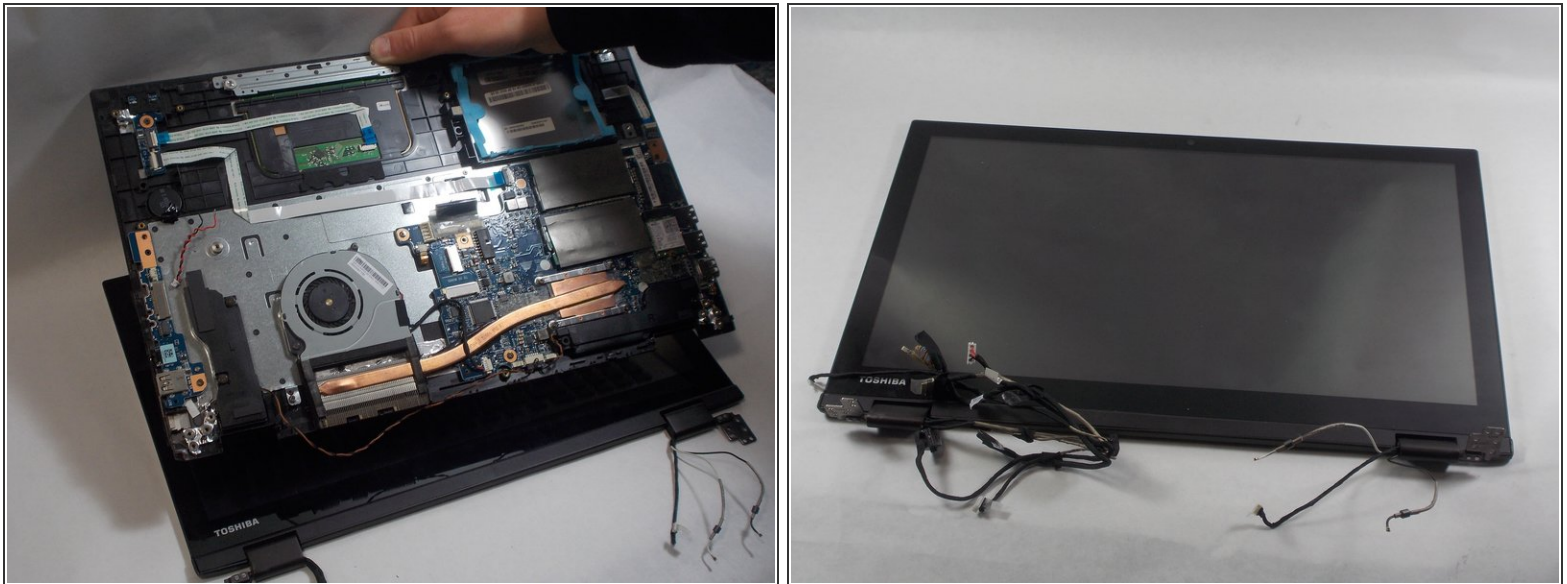
- On the other side remove the four remaining wires from their ports.

Step 9



- Lift two sets of metal brackets up, one in each corner.
- ⓘ Depending on the force needed on your specific device, you may need to use the spudger.

Step 10



- Gently lift the device away from the display assembly.
- ⓘ Be aware of the wires attached to the screen so they don't snag on anything.

To reassemble your device, follow these instructions in reverse order.