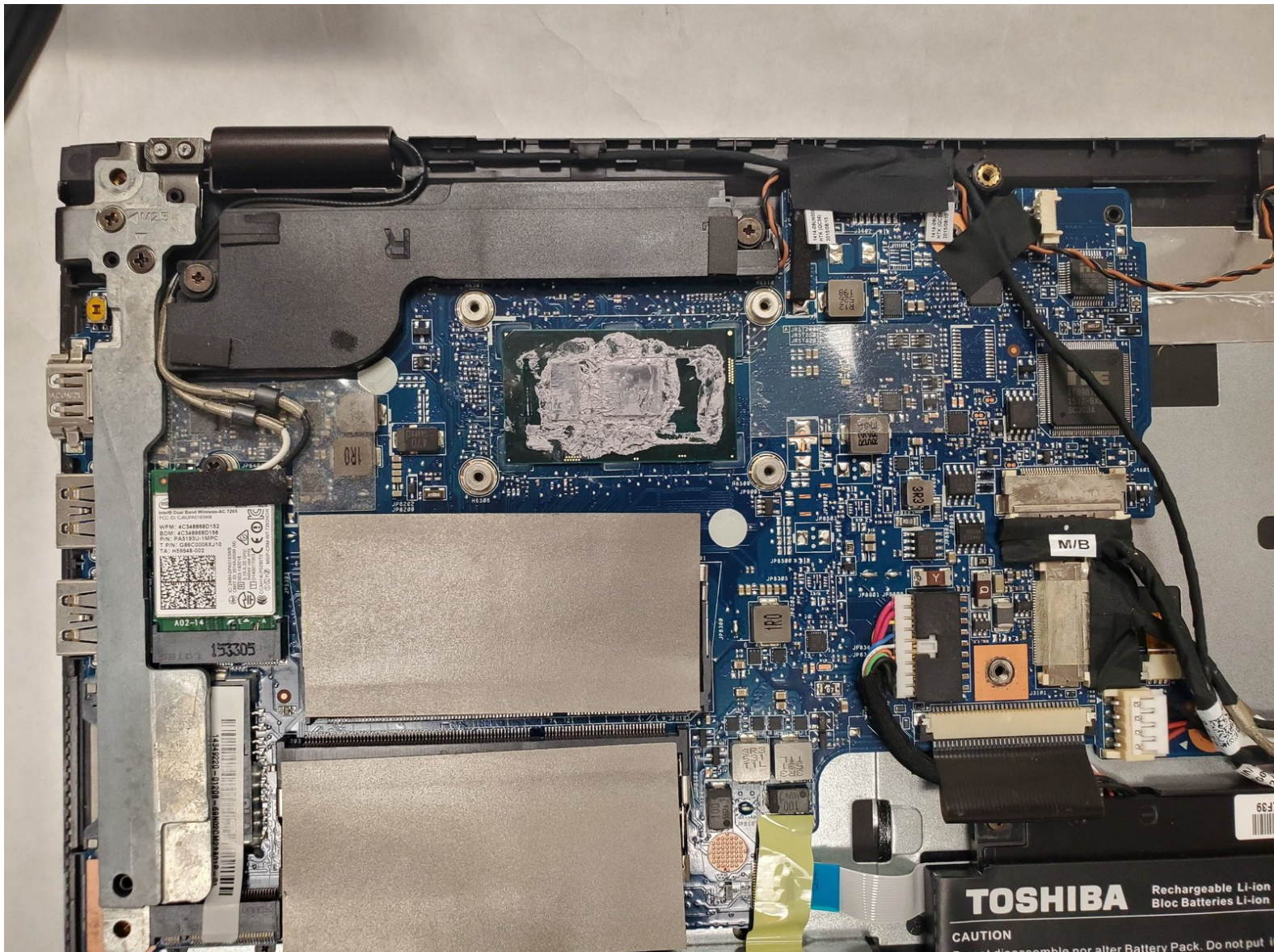




# Toshiba Satellite P55W-C5316 Motherboard Replacement

This guide shows the user how to replace the Toshiba P55W-C5316 Motherboard.

Written By: Zeyad Ali



---

## INTRODUCTION

The motherboard acts as the central hub of communication between all of the components in your device. A failing motherboard may affect the rest of the components in your device. Symptoms of a failing motherboard include the blue screen of death (BSoD), frozen screen, etc. If you're looking to replace the motherboard in your laptop, follow these instructions to remove the motherboard from your device.

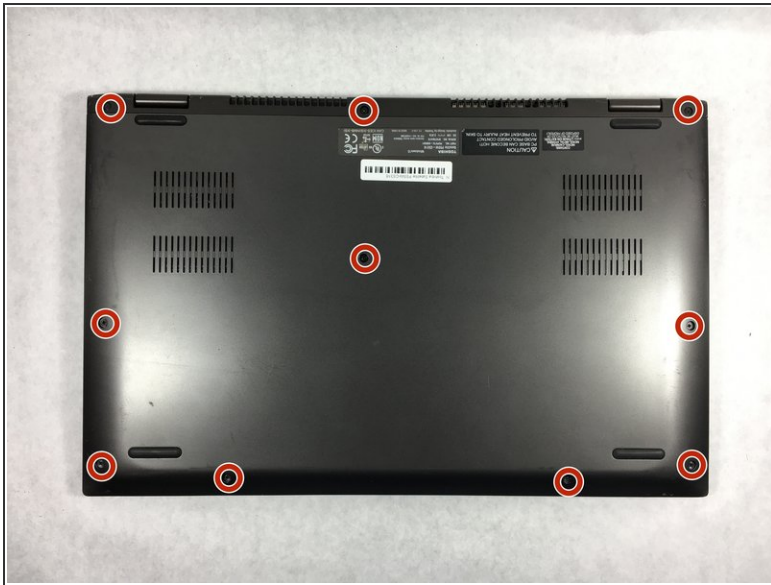


### TOOLS:

- [iFixit Opening Tools](#) (1)
  - [Phillips #1 Screwdriver](#) (1)
  - [Phillips #0 Screwdriver](#) (1)
  - [Phillips #00 Screwdriver](#) (1)
-

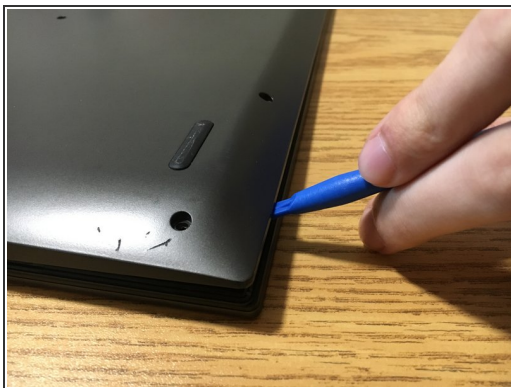


## Step 1 — Back Panel



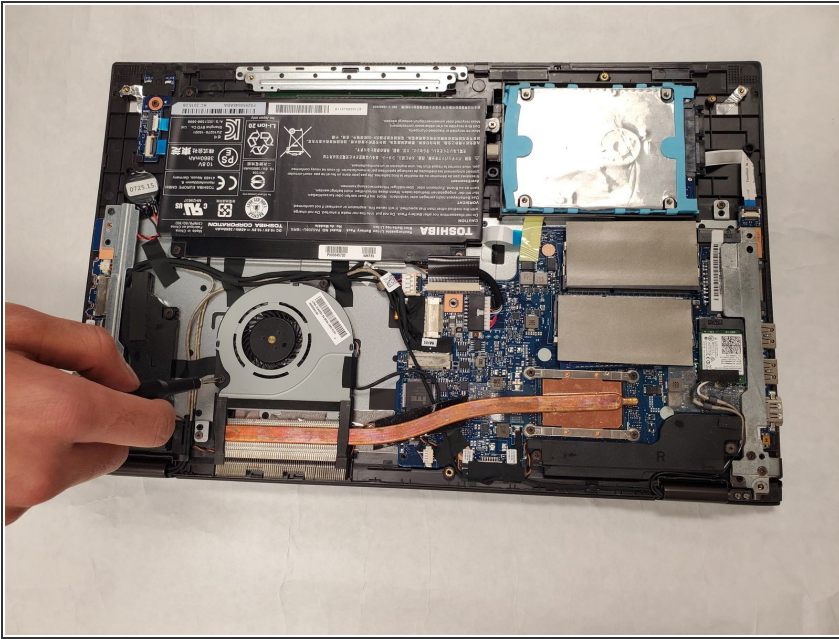
- i** To prevent injury, ensure the laptop is powered off before starting your work.
- Unscrew the .3mm Phillips head screws on the back panel using the PH1 screwdriver.

## Step 2



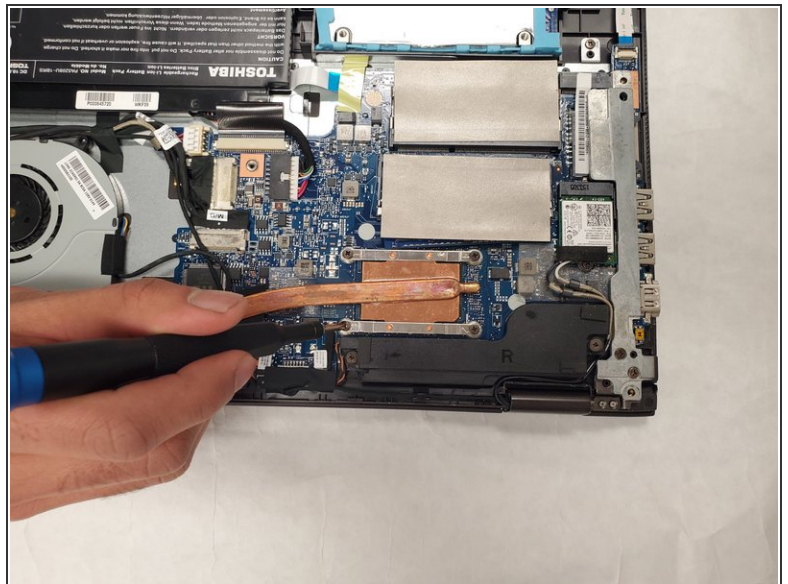
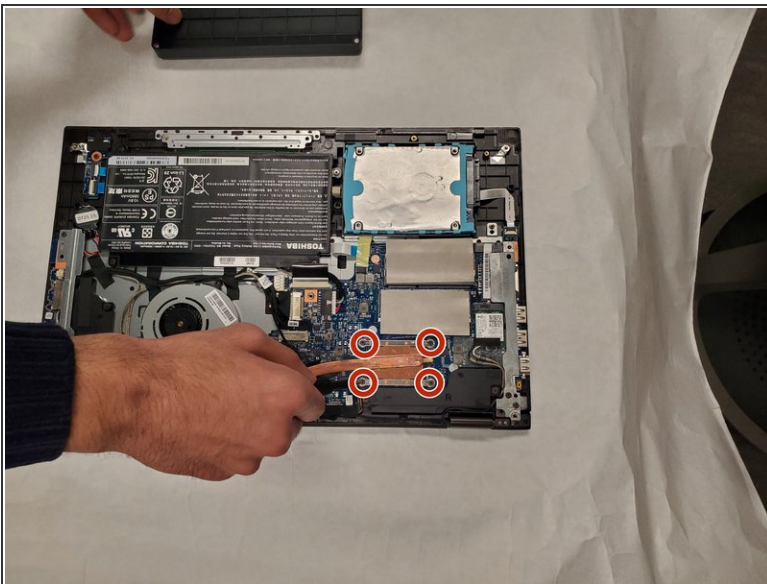
- !** Be careful to not crack the panel where the USB and power cord ports are.
- Insert the opening tool in between the back panel and the laptop to pry it open.
- i** The back panel is magnetically attached at the front of the laptop so you may have to move the opening tool along the length of the panel.
- Lift the panel from the front off of the laptop.

## Step 3 — Fan



- Remove both screws from the fan.

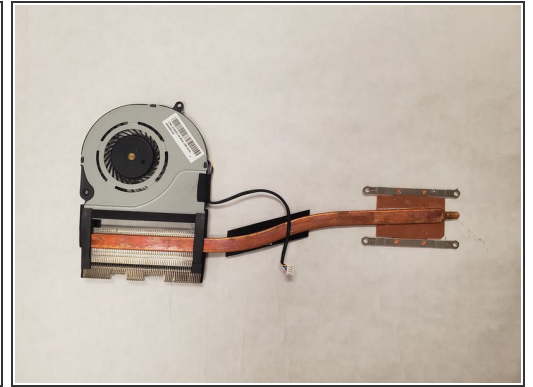
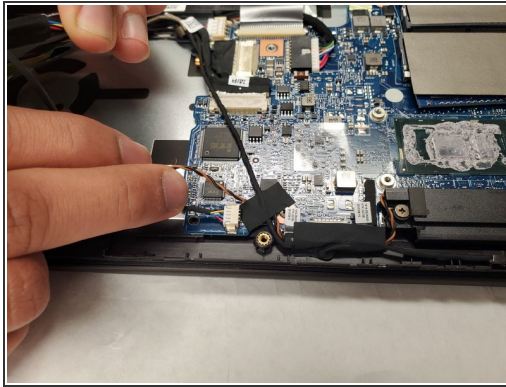
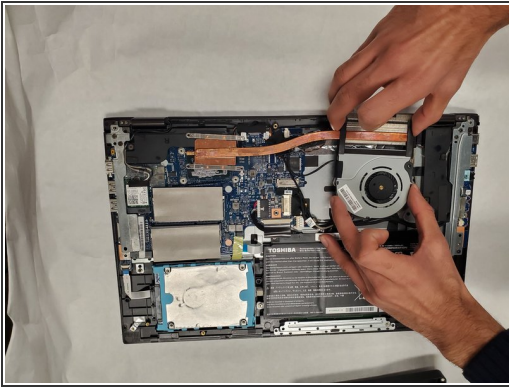
## Step 4



- Remove the screws securing the 4 corners of the heatsink.
- Gently remove the heatsink. Keep in mind thermal paste is used and it may be slightly difficult to remove.

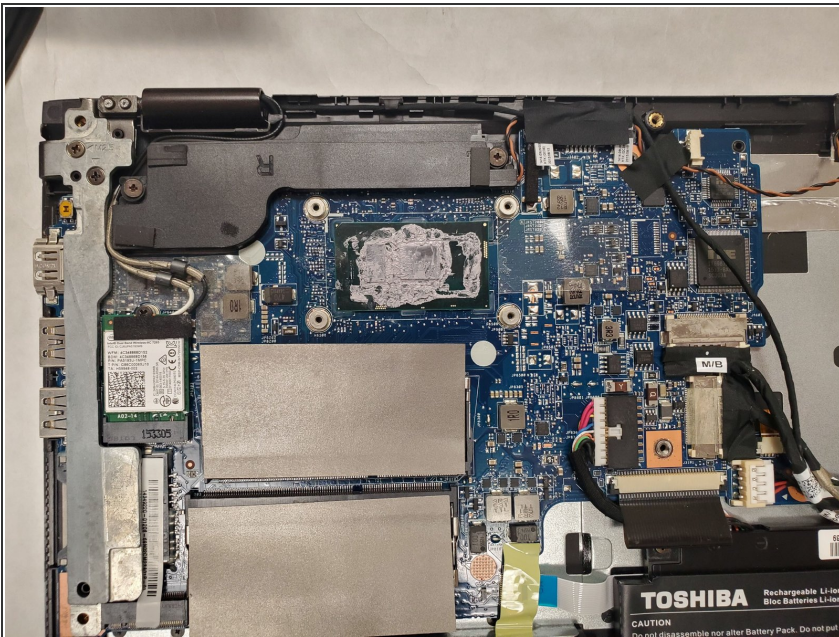


## Step 5



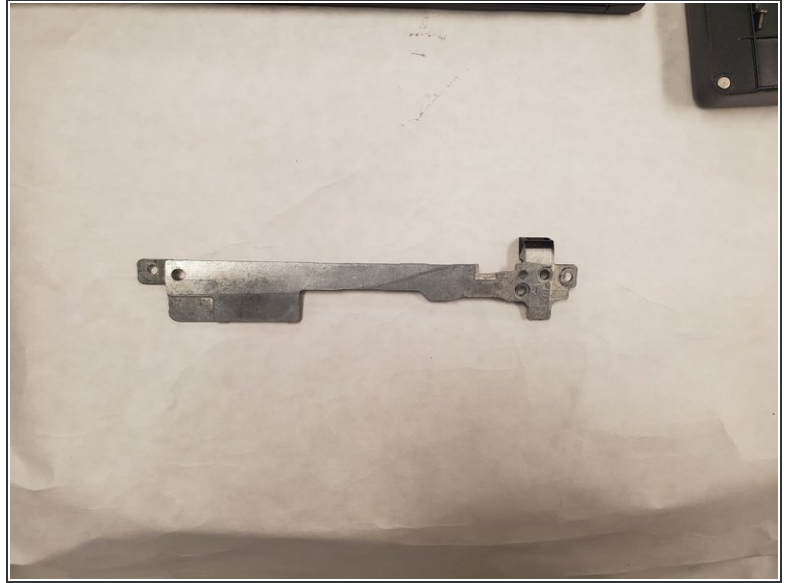
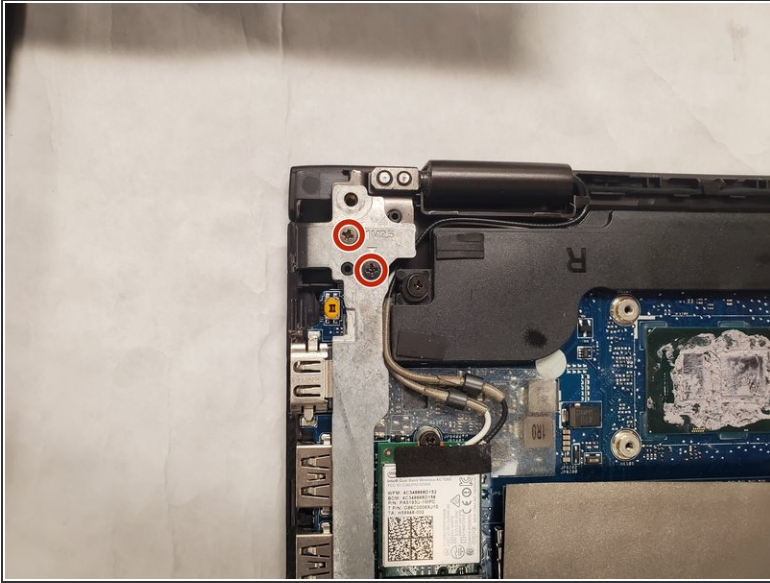
- Remove the small, beige colored connector securing the fan to the laptop and remove the fan and heatsink assembly from the laptop.

## Step 6 — Motherboard



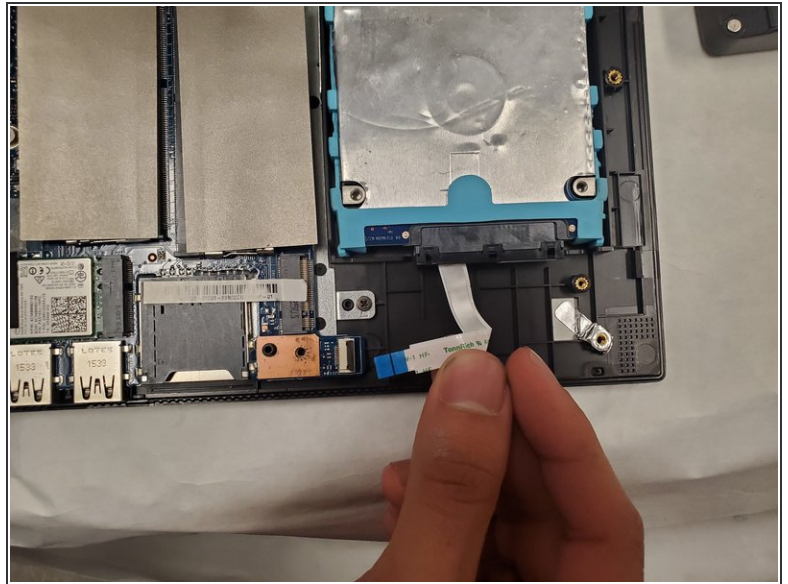
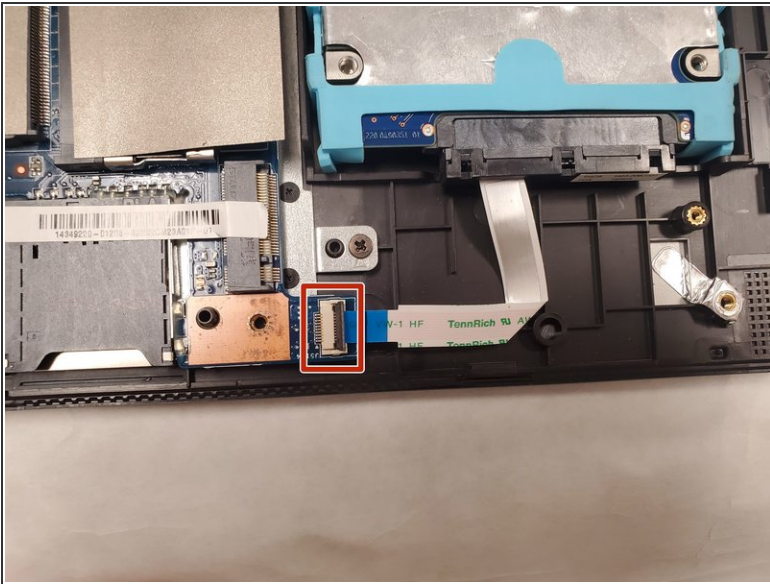
- Remove all black pieces of tape on the motherboard.

## Step 7



- Using a Phillips #00 screwdriver, remove the two screws on the top left corner of the USB protector (metal bar located on the left side of the motherboard).

## Step 8



- Disconnect the hard drive (silver rectangular box located on the bottom left corner of the laptop) by flipping the small black latch securing the connector upwards, and pulling the connector out.

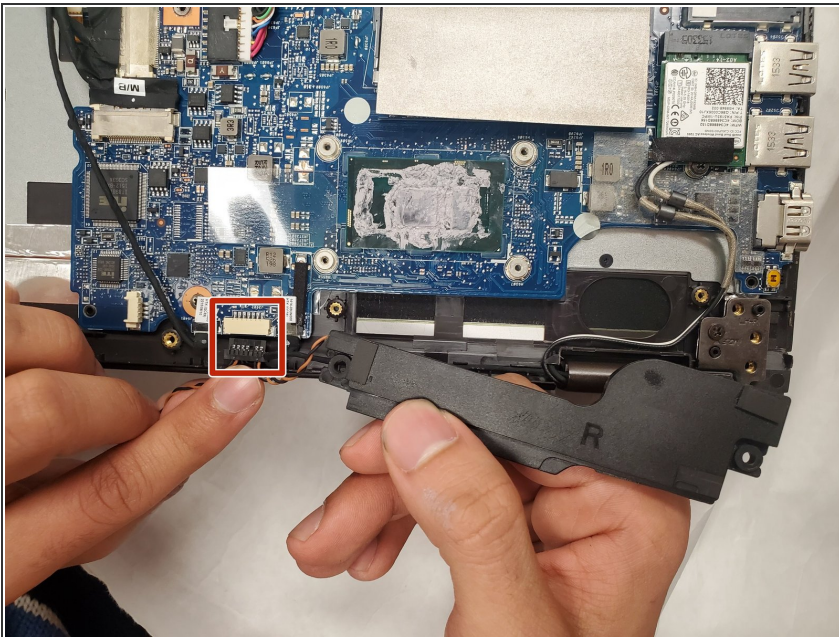


## Step 9



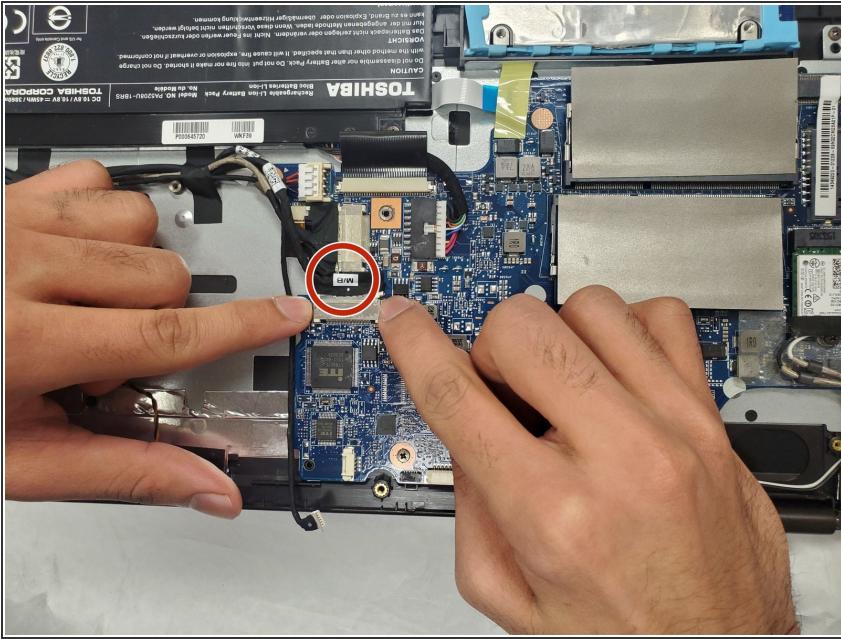
- Using the Phillips #00 screwdriver, remove the two screws on both ends of black rectangular plastic bar labeled “R” located on the top edge of the motherboard.

## Step 10



- Remove display cables located on both sides of the beige located on the right side of the “R” bar.

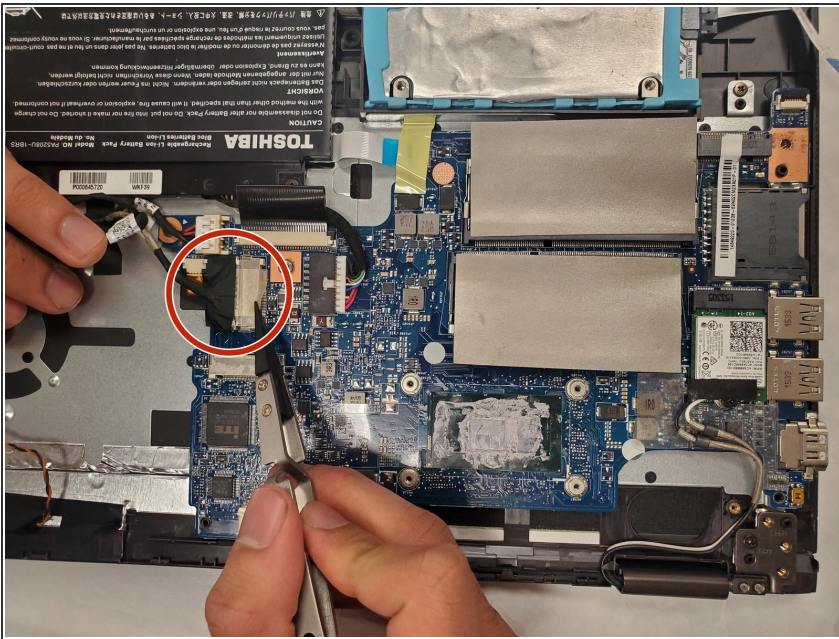
## Step 11



- Remove the black cable labeled “M/B” ( keep hand grounded) by pulling towards you while keeping the cable parallel to the laptop.

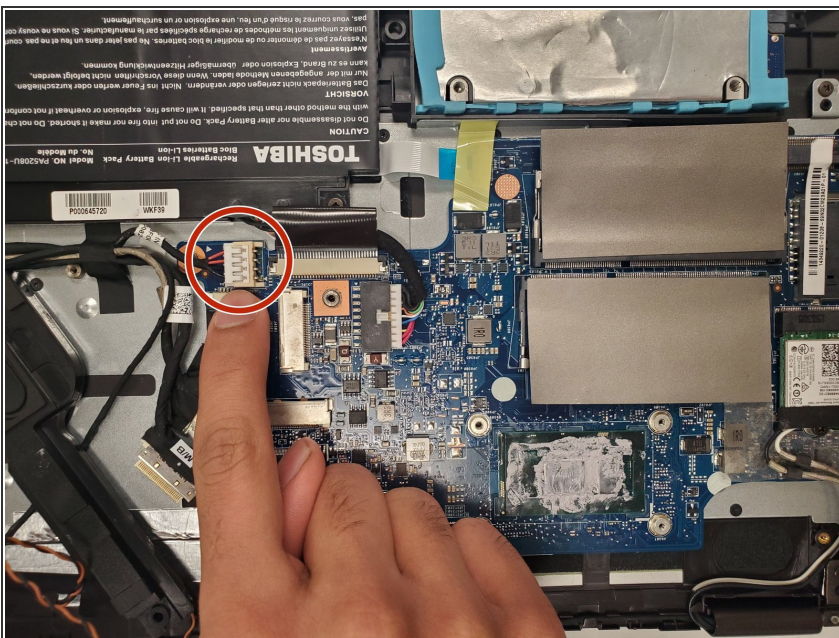


## Step 12



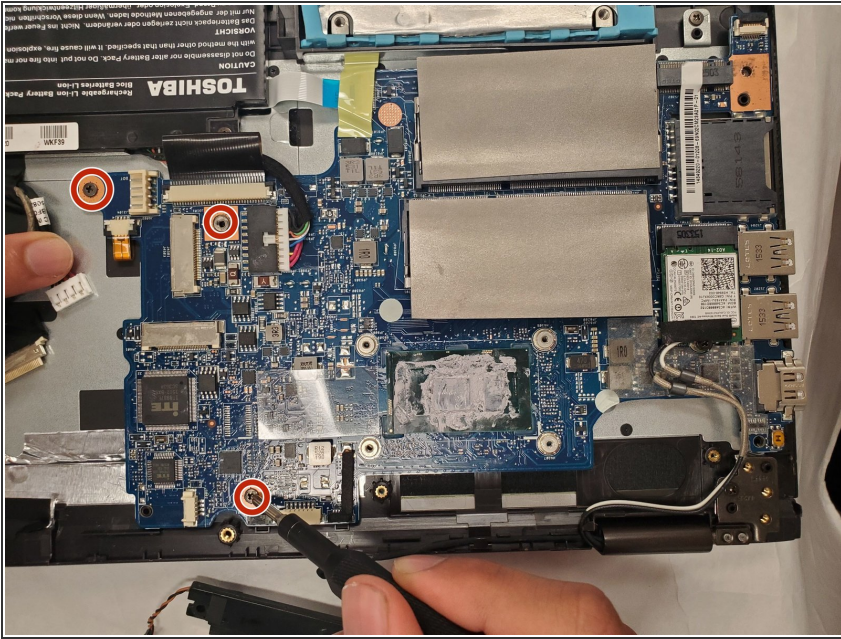
- Remove the display cable located directly below the “M/B” cable by removing the tape and pulling the cable to the right while keeping it parallel to the laptop.

## Step 13



- Remove the USB connector (white rectangle) located above the top left corner of the battery.

## Step 14



- Use the Phillips #00 screwdriver to remove the three screws securing the motherboard to the laptop (located on rectangular/circular copper surfaces).

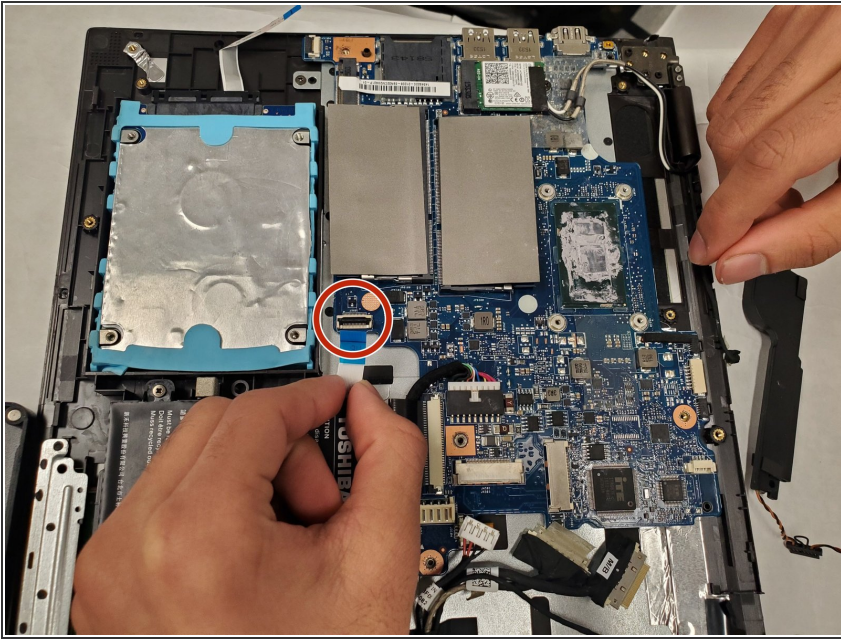
## Step 15



- Remove the yellow tape above the battery connector (located above top right corner of hard drive).

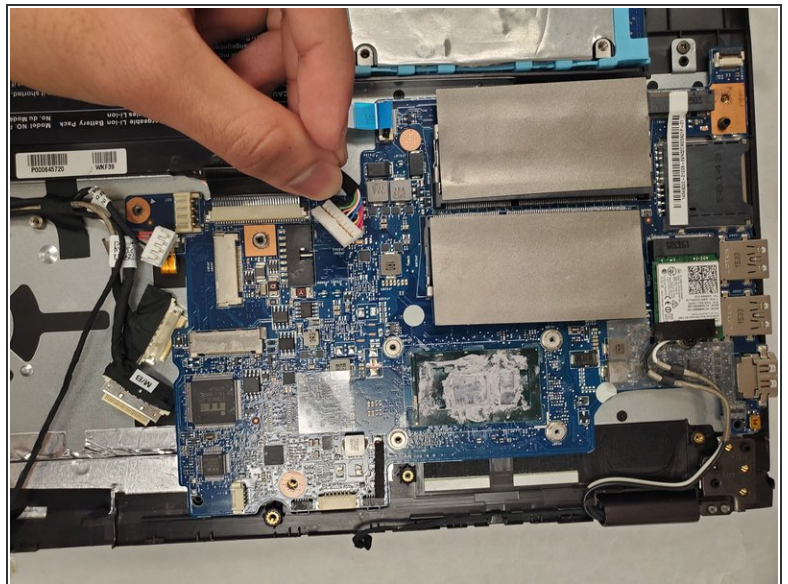
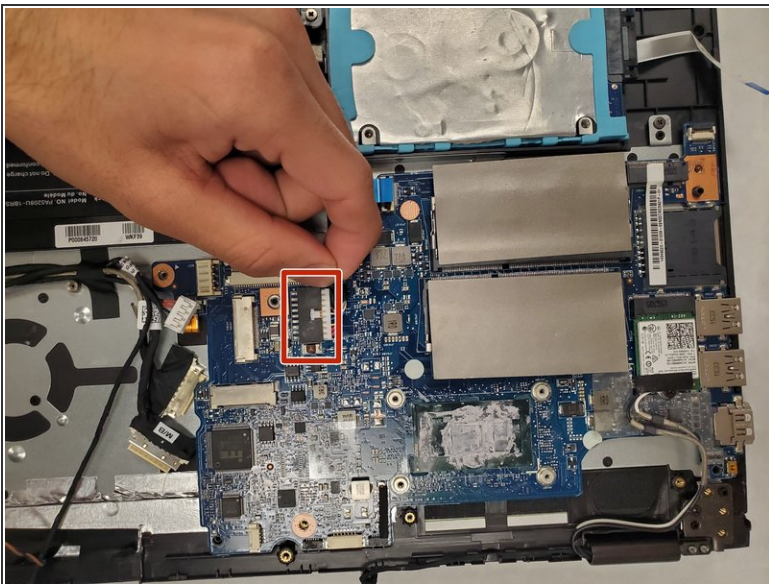


## Step 16



- Remove the connector by flipping up the black switch and pulling the blue tipped cable out.

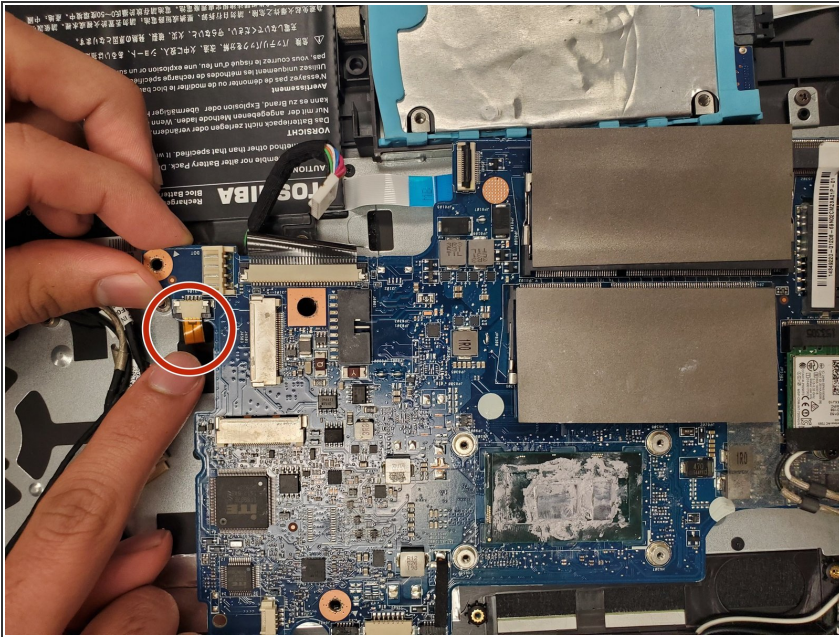
## Step 17



- Remove the second battery connector attached to motherboard (larger of the two).

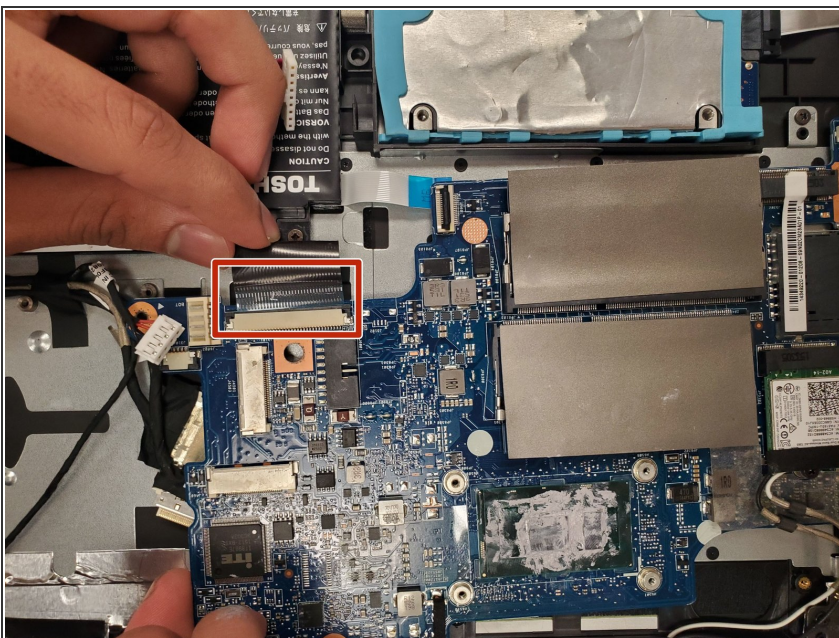


## Step 18



- Remove the cable connecting the motherboard to the laptop (located on right side of motherboard).

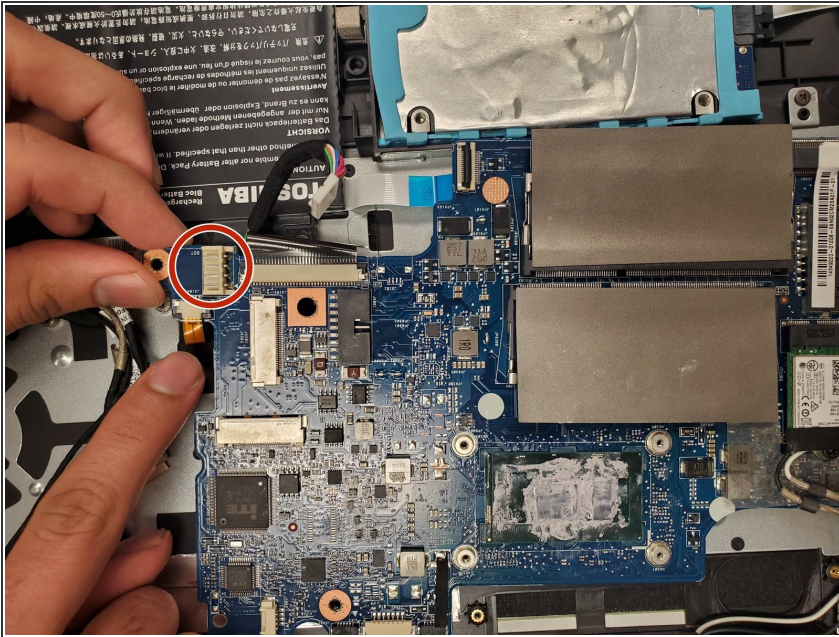
## Step 19



- Pull up the black tab located to the left of previously removed connector cable.

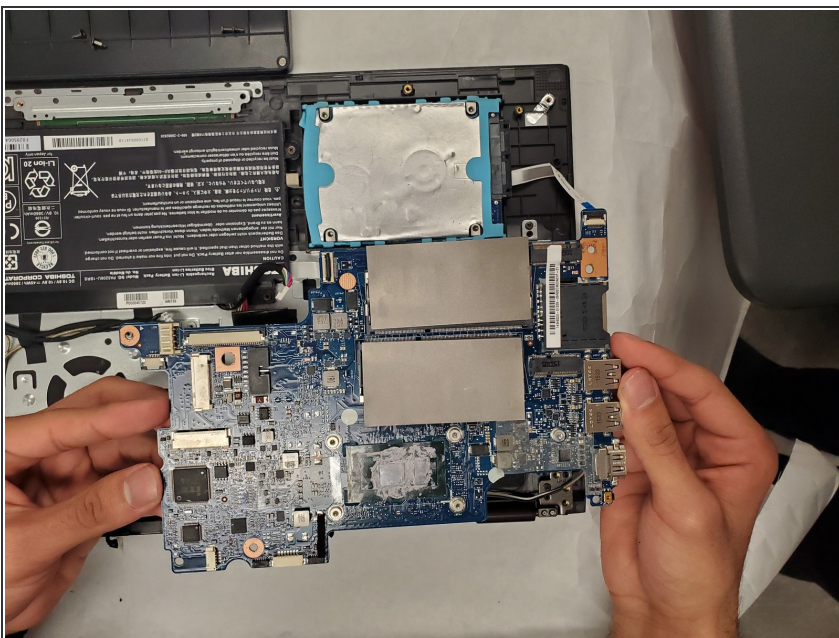


## Step 20



- Remove the wireless adapter (white rectangle attached to surface of motherboard).

## Step 21



- Remove the motherboard from the device.

To reassemble your device, follow these instructions in reverse order.